

Reduction of fetuin-A levels contributes to impairment of Purkinje cells in cerebella of patients with Parkinson's disease

Sunmi Yoon¹, Napissara Boonpraman¹, Chae Young Kim¹, Jong-Seok Moon² & Sun Shin Yi^{1,3,*}

¹BK21 Four Project, Department of Medical Sciences, Soonchunhyang University, Asan 31538,

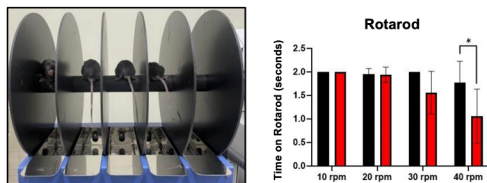
²Department of Integrated Biomedical Science, Soonchunhyang Institute of Medi-bio Science (SIMS), Soonchunhyang University, Cheonan 31151, ³Department of Biomedical Laboratory Science, College of Medical Sciences, Soonchunhyang University, Asan 31538, Korea

*Corresponding author.

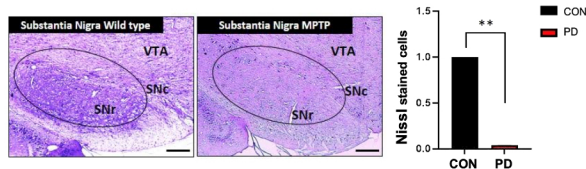
Tel: +82-41-530-4873; Fax: +82-41-530-3085; E-mail: admiral96@sch.ac.kr

Supplement 1

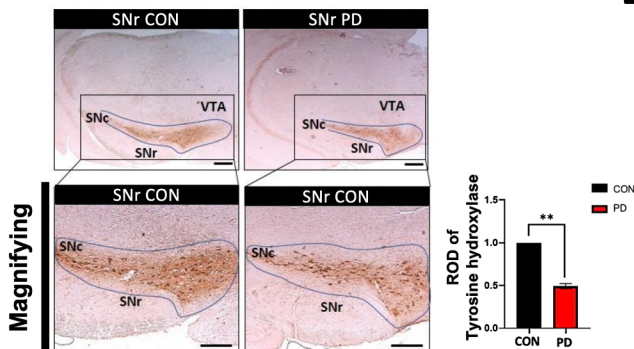
A



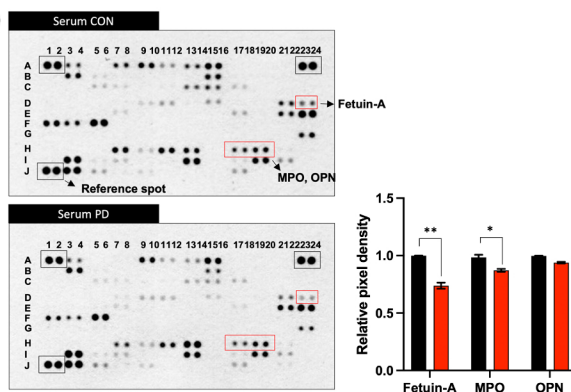
B



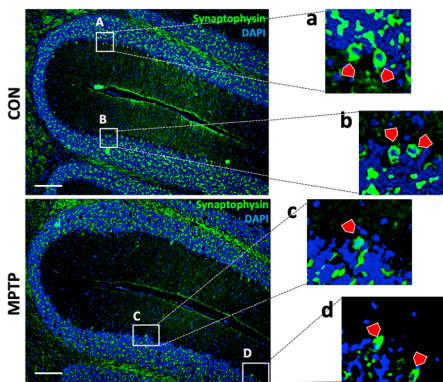
C



D



E



Supplementary 1. Establishment of MPTP-induced PD mouse model and histological cerebellar structure of PD mice and PD patients. (A) Comparison of the motor abilities of animals on Rotarod, (B) the neuron population in the SNr area, (C) IHC analyzed differences in TH-positive cells in the SNr region. (D) Proteome array data was performed using the animal serum. (E) Synaptophysin specific for synaptic vesicles in Purkinje cells (Red arrow heads). GCL=granule cell layer, ML=molecular layer, PCL=Purkinje cell layer, SNr=substantia nigra, SNr=Substantia nigra reticular pars, SNc=Substantia nigra pars, VTA=Ventral tegmental area, Black lined circle=dopaminergic neurons of SNc. Black arrow heads indicate Purkinje cells. **, $P < 0.01$; *, $P < 0.05$ vs. CON. Scale bar=100 μ m. Error bar represents mean \pm SD