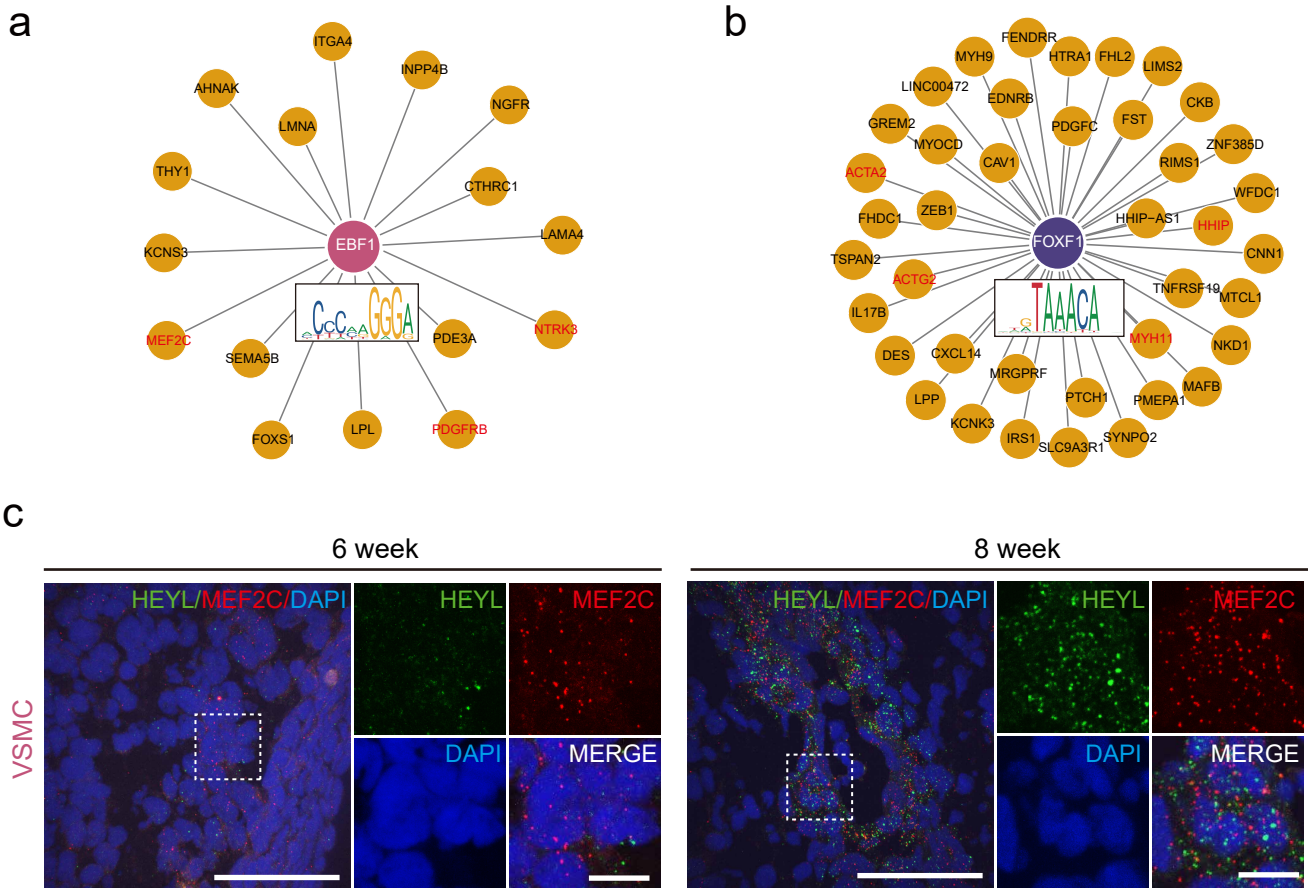


## Supplementary information, Fig. S10



**Fig. S10 Transcription factors regulate the development of VSMC and ASMC.**

**(a-b)** Regulon networks of *EBF1* and *FOXF1* were described in **(a)** and **(b)**. The target genes marked in red are reported in previous studies. The motifs listed in this study are validated from <https://jaspar.genereg.net>.

**(c)** smiFISH staining the expression of *HEYL* (green) and *MEF2C* (red) in a group of VSMC in the lung at week 6 and 8. Data are representative of at least two independent smiFISH experiments. Scale bar: 50  $\mu$ m (long), 10  $\mu$ m (short).