

Fig. S10

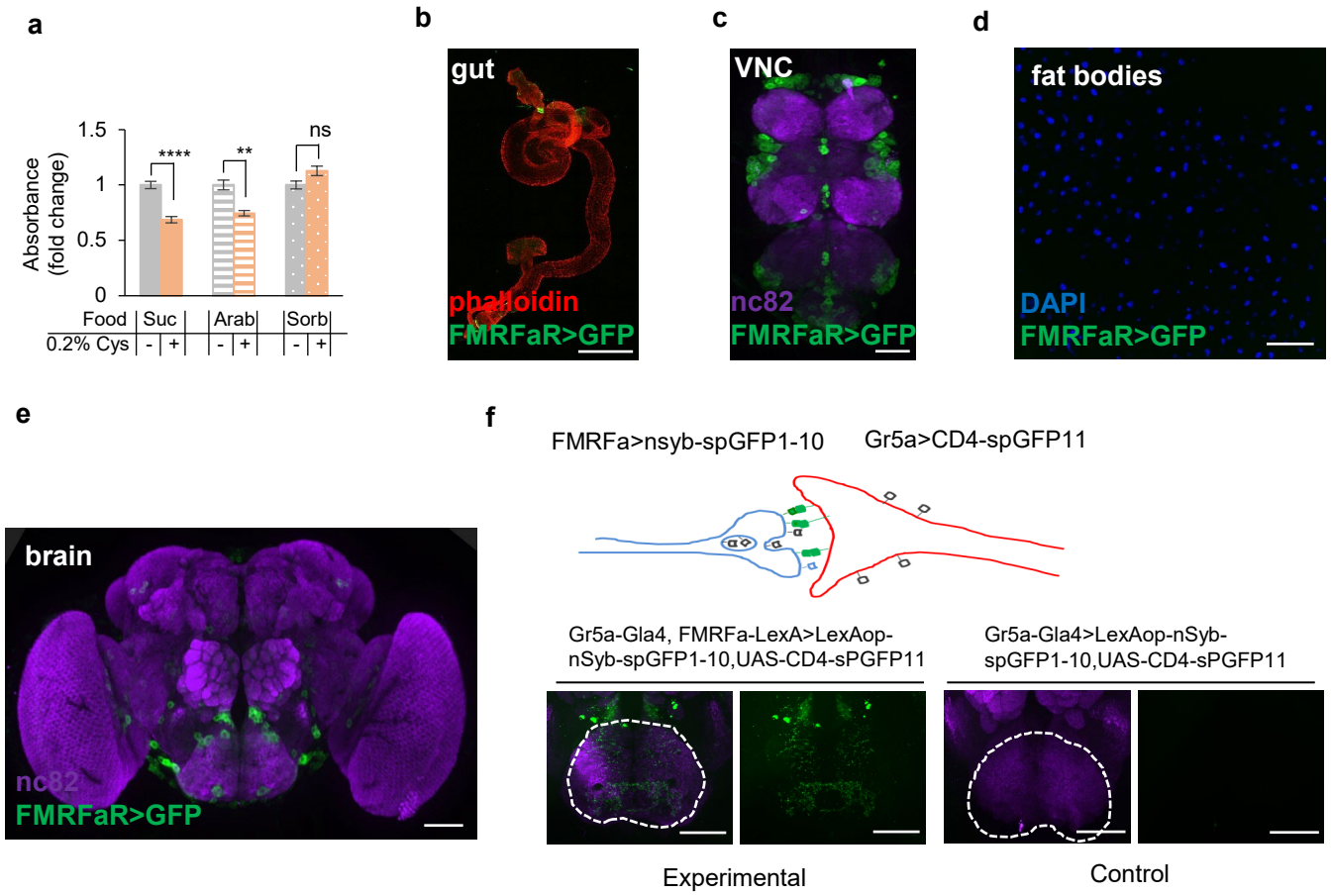


Fig. S10: FMRFaR expression in different tissues.

a Food consumption of pre-starved flies assayed with the indicated sugar types with or without 0.2% cysteine (n=6-12). **(b-e)** FMRFaR expression in the gut (**b**, Scale bar, 500 μ m), the VNC (**c**, Scale bar, 50 μ m), the fat bodies (**d**, Scale bar, 50 μ m), and the brain (**e**, Scale bar, 50 μ m), illustrated by mCD8::GFP driven by *FMRFa^{GAL4}*. **f** (top) Schematic diagram of nSyb-GRASP between FMRFa⁺ and Gr5a⁺ neurons. (left) nSyb-GRASP signals between FMRFa⁺ neurons and Gr5a⁺ neurons in the SEZ region (dotted line). (right) In the control groups, no nSyb-GRASP signal was seen. Scale bar represents 50 μ m.