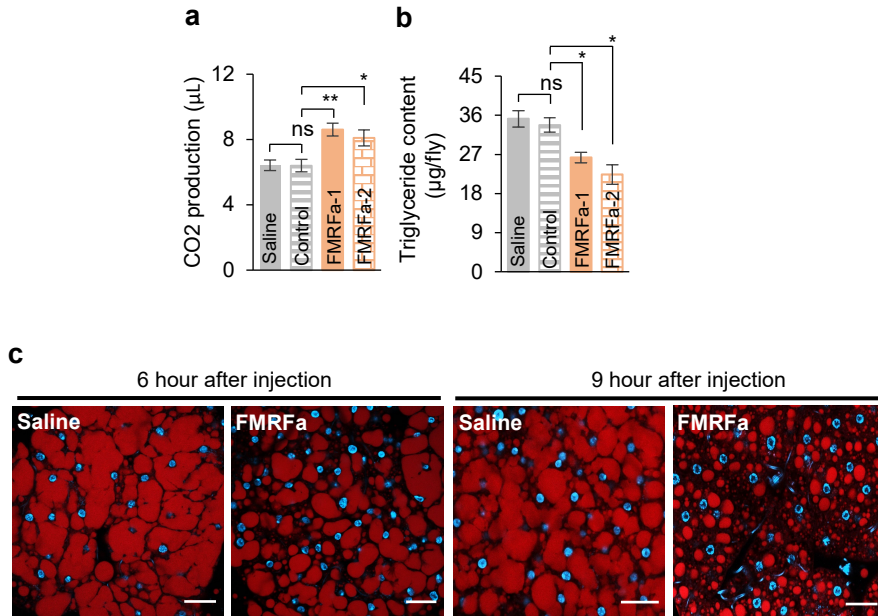


**Fig. S9**



**Fig. S9: Injection of synthetic FMRFa peptides induced fat loss.**

(a-b) 1 hour CO<sub>2</sub> production (a, n=9-19) and triglyceride content (b, n=6-8) of flies injected with saline, controlled peptide or synthetic FMRFa (FMRFa-1 and FMRFa-2). Triglyceride content was assayed 6 hours after the microinjection. c Nile Red staining of the fat bodies of flies after saline or FMRFa microinjection for 6 or 9 hours. Scale bar, 20 µm. ns, p > 0.05; \*p < 0.05; \*\*p < 0.01. One-way ANOVA followed by post hoc test with Bonferroni correction were used for multiple comparisons when applicable.