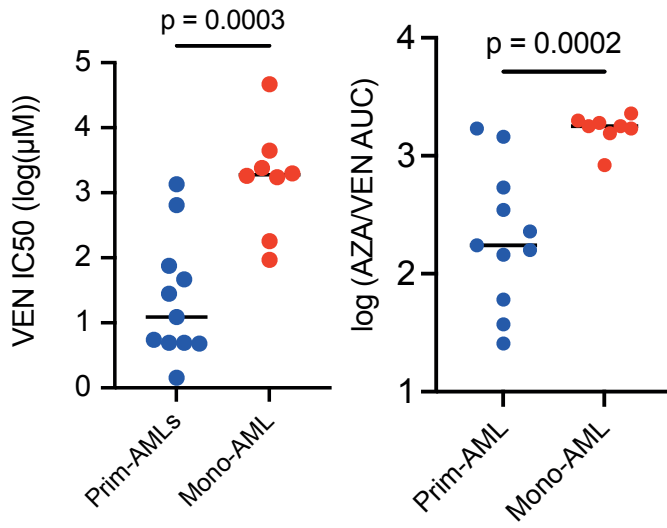
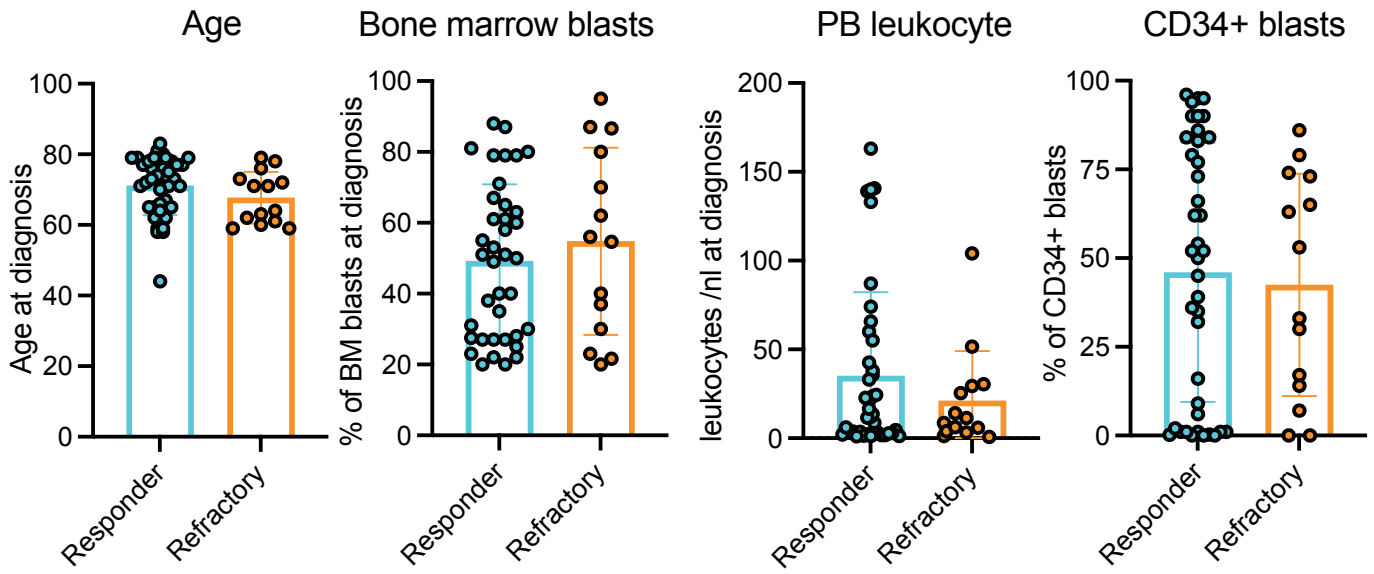
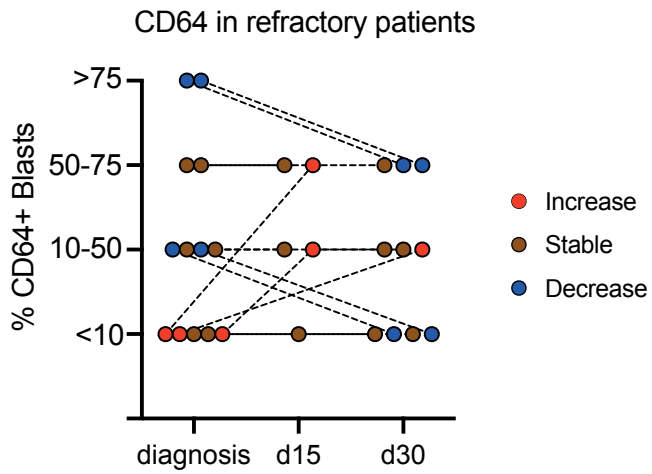


# Supplementary Figure 1

**A****B****C**

**Supplementary Figure 1: Cell line sensitivity and additional patient data**

**A** IC50s for VEN of 19 AML cell lines classified as primitive (Prim-AML, n = 11) or monocytic (Mono-AML, n = 8) treated *ex vivo* with 1.5  $\mu$ M of 5-AZA and increasing concentrations of VEN for 72 hours. Representative data of two independent experiments. Each dot represents a cell line with the line marking the mean. Mann-Whitney test was used to compare the two groups.

**B** Pre-treatment clinical characteristics of 54 AML patients treated with 5-AZA/VEN as first-line therapy, including age, percentage of bone marrow blasts, peripheral leukocyte counts and percentage of CD34<sup>+</sup> cells. Each dot represents an individual AML patient.

**C** Percentage of CD64<sup>+</sup> AML cells of refractory AML patients pre-treatment and after induction at day 15 and day 30. Dashed lines connect different time points of the same patient.

d: Day