

Supplemental information

**Pre-existing immunity does not impair the
engraftment of CRISPR-Cas9-edited cells in rhesus
macaques conditioned with busulfan or radiation**

Khaled Essawi, Waleed Hakami, Muhammad Behroz Naeem Khan, Reid Martin, Jing Zeng, Rebecca Chu, Naoya Uchida, Aylin C. Bonifacino, Allen E. Krouse, Nathaniel S. Linde, Robert E. Donahue, Gerd A. Blobel, Ulrike Gerdemann, Leslie S. Kean, Stacy A. Maitland, Scot A. Wolfe, Jean-Yves Metais, Stephen Gottschalk, Daniel E. Bauer, John F. Tisdale, and Selami Demirci

Supplemental Material

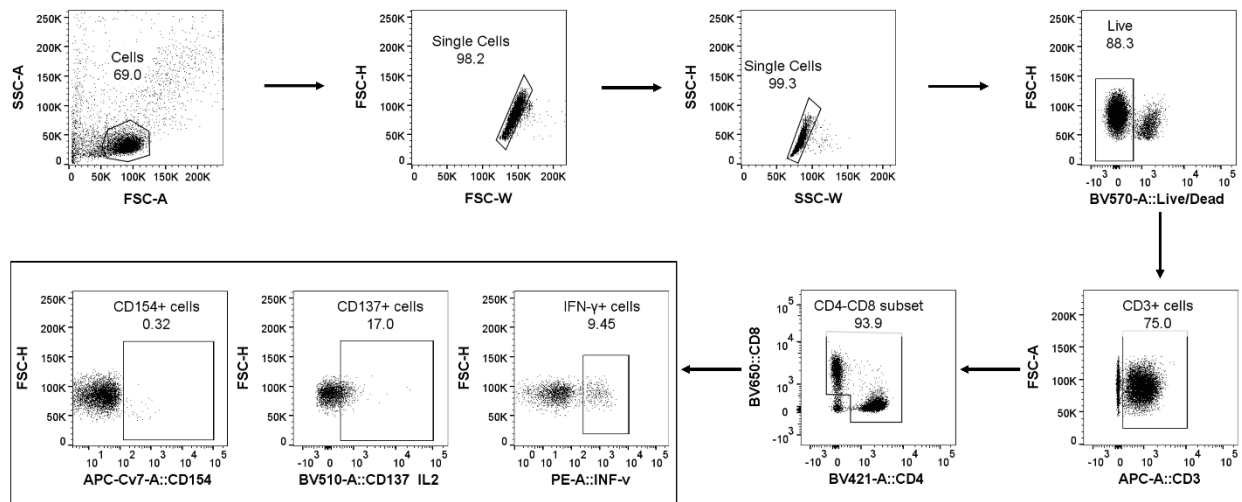


Figure S1. Schematic representation of flow cytometry analysis. Note: IL-2 and CD137 were analyzed in the same channel.

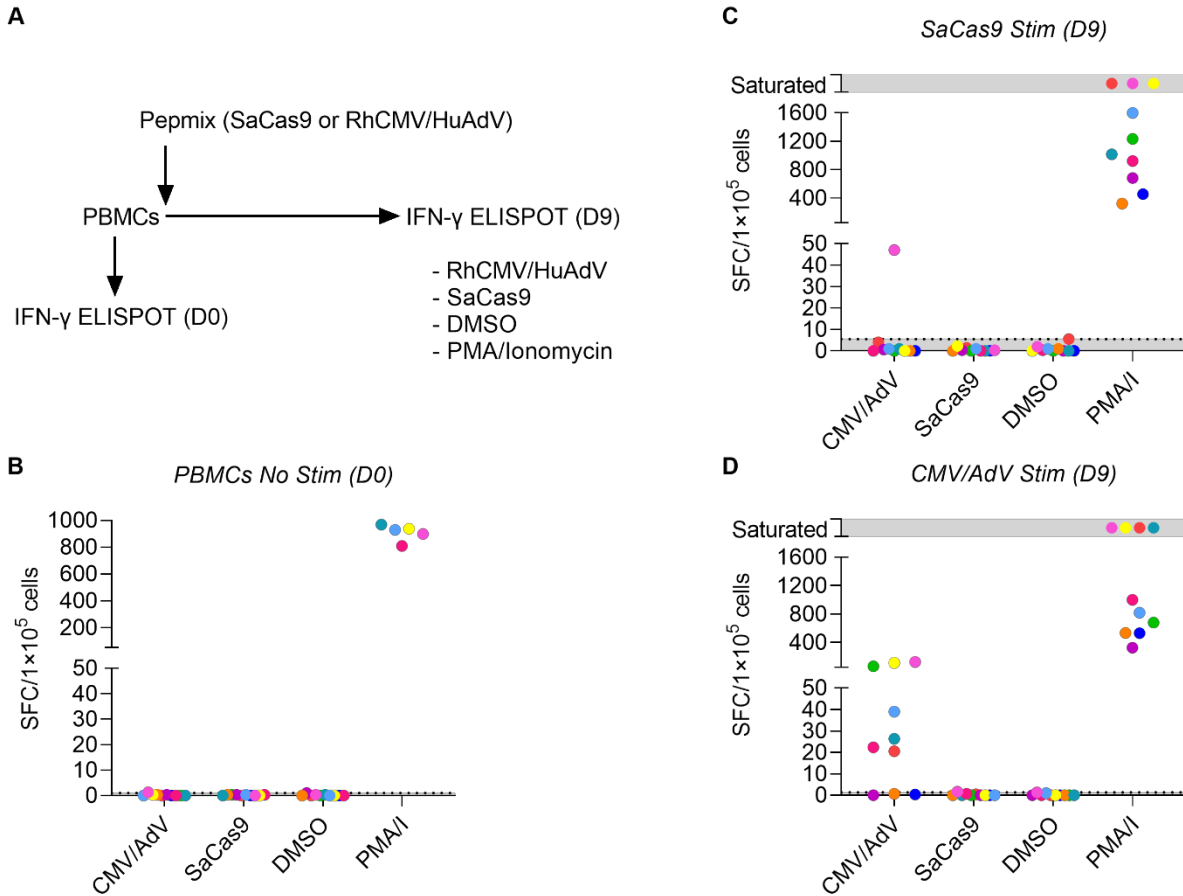


Figure S2. SaCas9-specific T cells are not detected by IFN- γ Elispot assay. (A) Outline of experiment performed on 10 rhesus macaque PBMCs. (B) IFN- γ Elispot performed on D0 (for PMA/I: n=5). (C, D) IFN- γ Elispot assay results performed on day 9 with (C) SpCas9 or (D) RhCMV/HuAdV pepmixes. Saturated: complete confluency of the spot forming cells (SFC