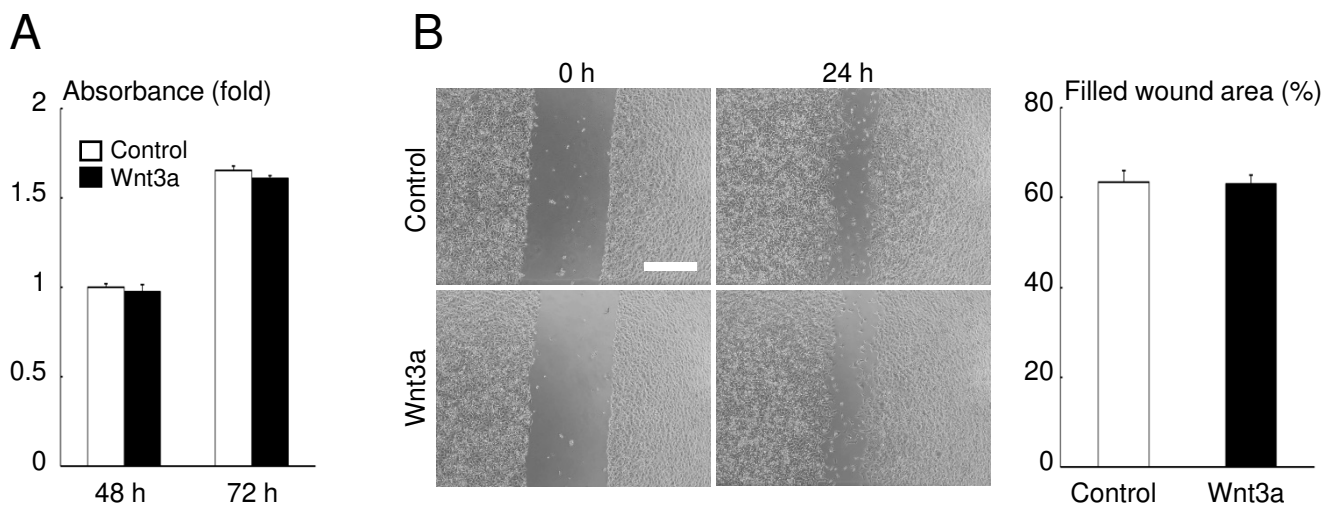


Supplementary Figure S1:

(A) Effects of Wnt3a on monolayer proliferation of MDA-MB-231 cells as determined using a WST-8 assay. Data are expressed as fold changes in absorbance relative to the control at 48 hours. **(B)** Effects of Wnt 3a on cell migration of MDA-MB-231 cells as determined using a wound healing assay. Representative microscopic images at 0 and 24 hours after wounding are shown on the left (scale bar = 500 μ m). Data are expressed as filled wound area (%).



Supplementary Figure S2:

Effects of the anti-sclerostin antibody (Ab) on trabecular bone volume in non-tumor-bearing C57BL/6 (A), BALB/c (B), and athymic nude (C) mice. Representative μ CT images are shown on the left (scale bar = 500 μ m). Data are expressed as bone volume/tissue volume (BV/TV, %, $n = 6$ for C57BL/6 mice and $n = 4$ for BALB/c and athymic nude mice). * $p < 0.001$

