

PRO-C3 is a predictor of clinical outcomes in distinct cohorts of patients with advanced liver disease

Mette J Nielsen¹, Grace E Dolman², Rebecca Harris², Peder Frederiksen¹, Jane Chalmers²,
Jane Grove^{2,5}, William L Irving^{2,4}, Morten A Karsdal¹, Keyur Patel³, Diana Julie Leeming¹,
Indra Neil Guha^{2,5}

Table of contents

Fig. S1.....	1
Fig. S2.....	2

Fig. S1

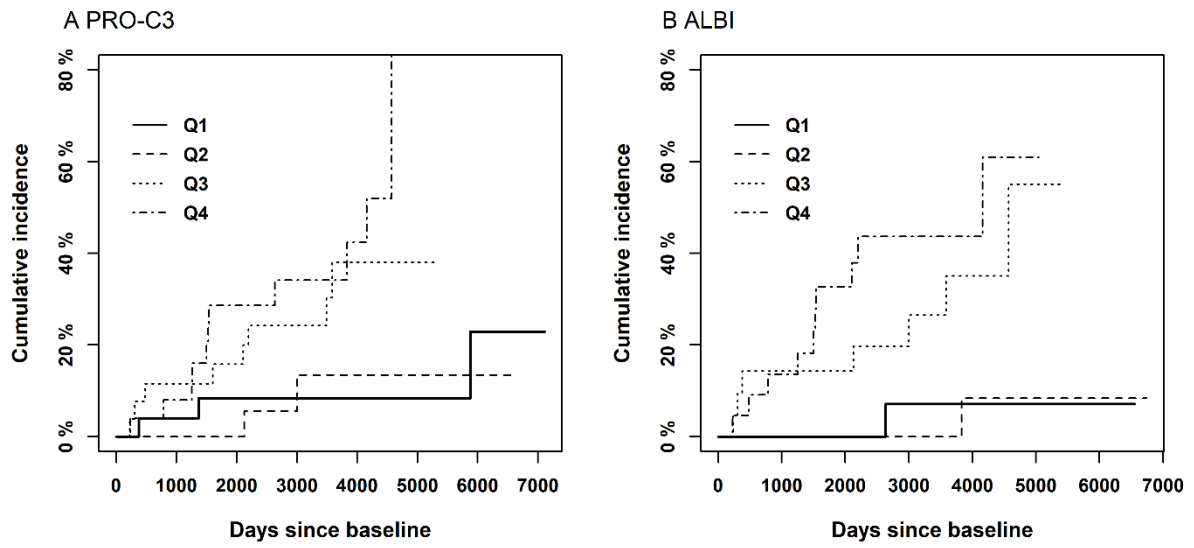


Fig. S2

