

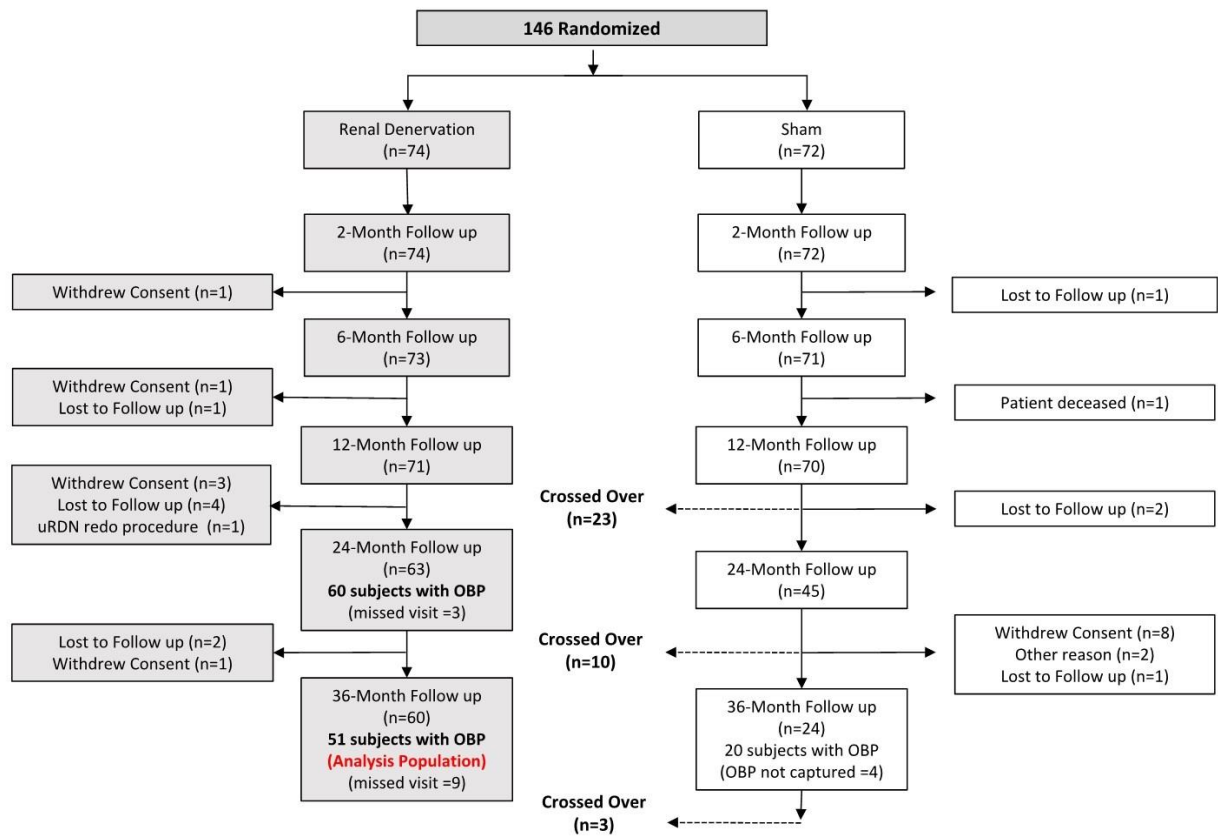
## Supplementary data

**Supplementary Table 1. Baseline characteristics of all RADIANCE-HTN SOLO patients randomised to uRDN**

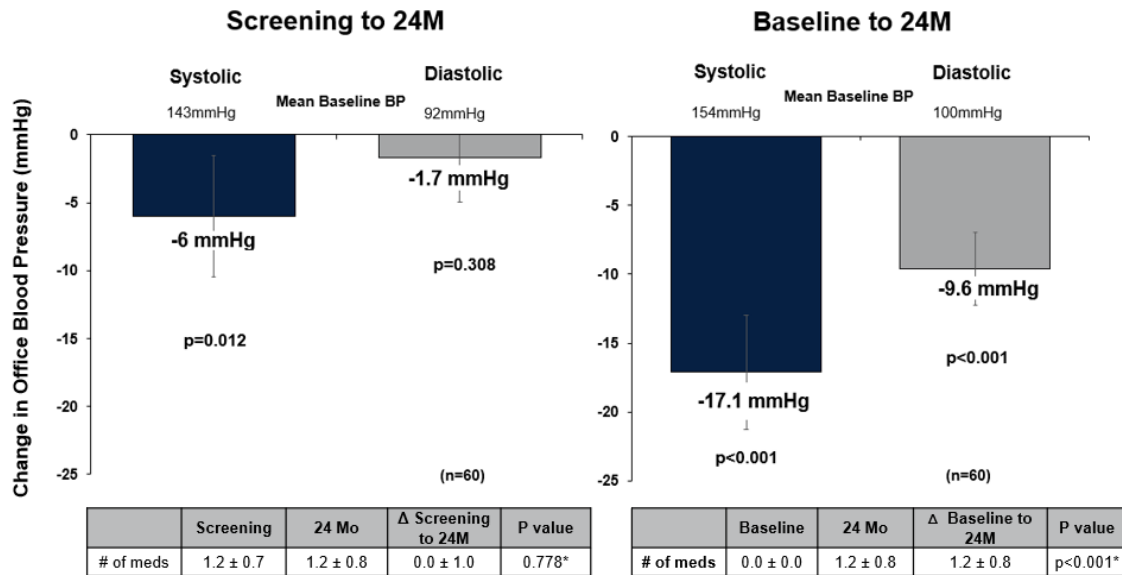
Clinical characteristics	uRDN
Age (years)	54.4 ± 10.2
Female sex (%)	38% (28/74)
Race	
White	81% (60/74)
Black	16% (12/74)
Other	3% (2/74)
Body mass index (kg/m <sup>2</sup> )	29.9 ± 5.9
Abdominal obesity	56% (41/74)
eGFR – ml/min/1.73m	84.7 ± 16.2
eGFR <60 ml/min/1.73m	1% (1/24)
Type 2 diabetes	3% (2/74)
Sleep apnoea	8% (6/74)
<b>Screening Blood Pressure (before anti-HTN med washout)</b>	
Office BP (mmHg)	142.6/92.3 ± 14.7/10.1
<b>Baseline Blood Pressures (after anti-HTN med washout)</b>	
Office BP (mmHg)	154.5/99.7 ± 12.4/7.7
Daytime ABP (mmHg)	150.3/93.1 ± 7.8/4.8
24-hour ABP (mmHg)	142.6/87.3 ± 8.1/5.0

**Supplementary Table 2. Number and type of antihypertensive medications at 36 months**

<b>Antihypertensive medications</b>	
Mean number of antihypertensive medications at 36M	1.3 ± 0.8
Number of antihypertensive medications at 36M	
0	17.6% (9/51)
1 medication	43.1% (22/51)
2 medications in combination	35.3% (18/51)
3 medications in combination	3.9% (2/51)
Types of Medication at 36M	
Renin Angiotensin System Blockers	51.0% (26/51)
Angiotensin converting enzyme inhibitor	25.5% (13/51)
Angiotensin receptor blocker	25.5% (13/51)
Direct renin inhibitor	0.0% (0/51)
Calcium channel blocker	52.9% (27/51)
Thiazide-like diuretic	21.6% (11/51)
Aldosterone antagonist	0.0% (0/51)
Alpha-1 receptor blocker	0.0% (0/51)
Beta blocker	0.0% (0/51)
Centrally acting alpha-2 agonist or imidazoline receptor agonist	0.0% (0/51)
Vasodilator	0.0% (0/51)



Supplementary Figure 1. Patient disposition



Values are presented as mean ± SD. Error bars represent 95% confidence interval. \*Wilcoxon signed-rank tests. Systolic office blood pressure change from baseline median -20.0 (-29.0, -7.5).

**Supplementary Figure 2. Office blood pressure changes for the 24-month population**