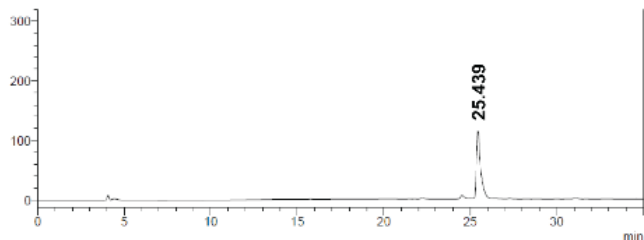
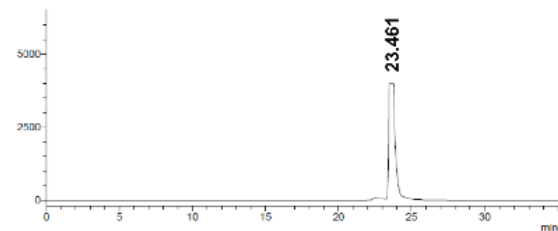


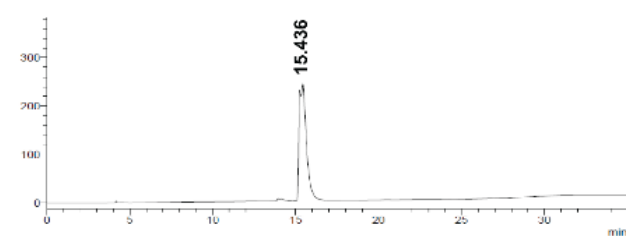
A.

Boc<sub>2</sub>-iso-GMTB-PODS

B.

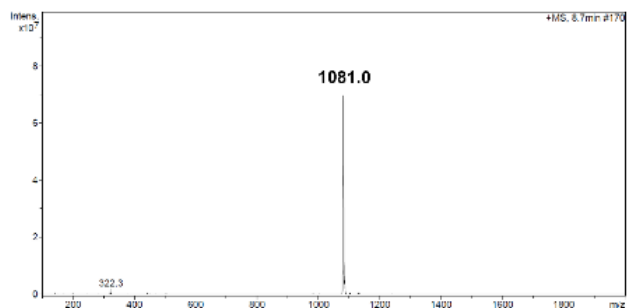
Boc<sub>2</sub>-iso-GMIB-PODS

C.

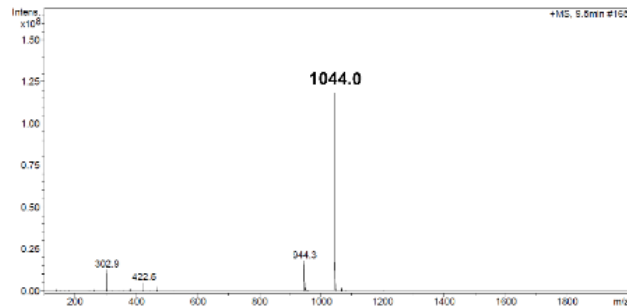


GMIB-PODS

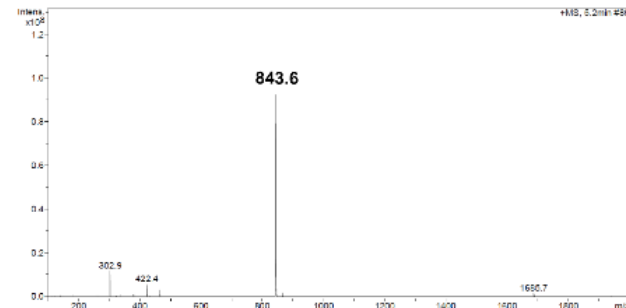
D.

Boc<sub>2</sub>-iso-GMTB-PODS

E.

Boc<sub>2</sub>-iso-GMIB-PODS

F.



GMIB-PODS

Supplemental Figure 1. Analytical HPLC of Boc<sub>2</sub>-iso-GMTB-PODS precursor, Boc<sub>2</sub>-iso-GMIB-PODS standard and iso-GMIB-PODS standard. A, B, and C: results were obtained from a Shimadzu HPLC system equipped with a Phenomenex analytical column (250 x 2 mm, 5 μm, 300 Å) using mobile phases A: water and B: MeCN at a 5-95% B in 35 min gradient. D, E, and F: ESI-MS results for Boc<sub>2</sub>-iso-GMTB-PODS precursor, Boc<sub>2</sub>-iso-GMIB-PODS standard and iso-GMIB-PODS standard.