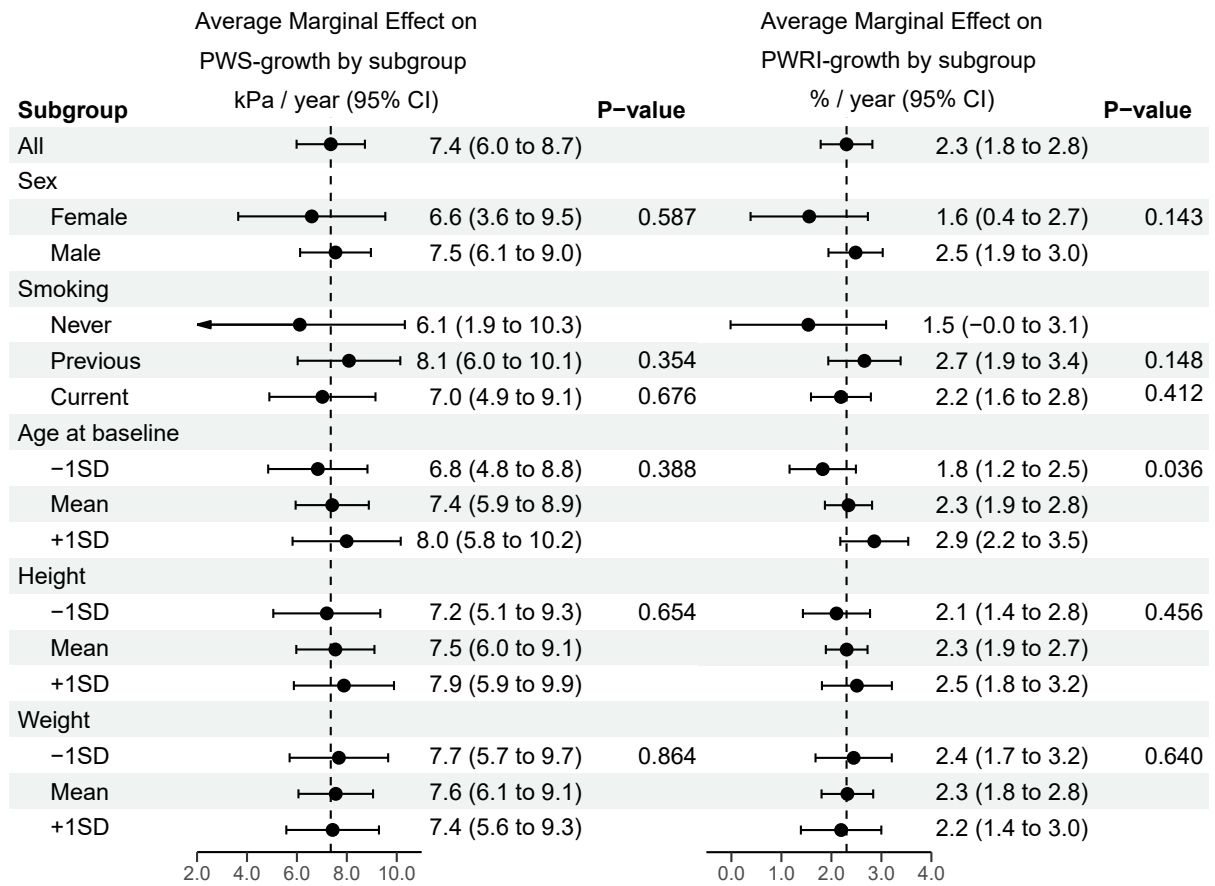
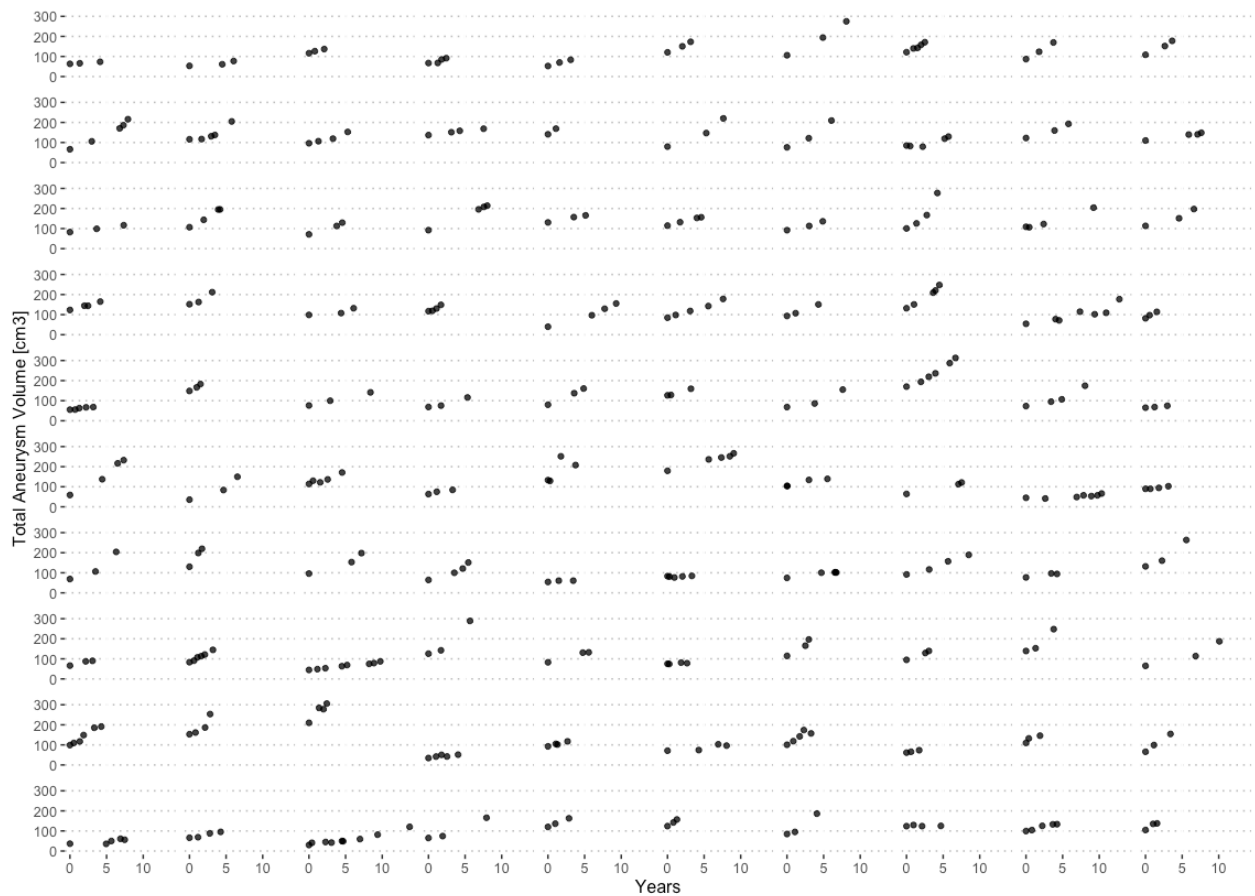


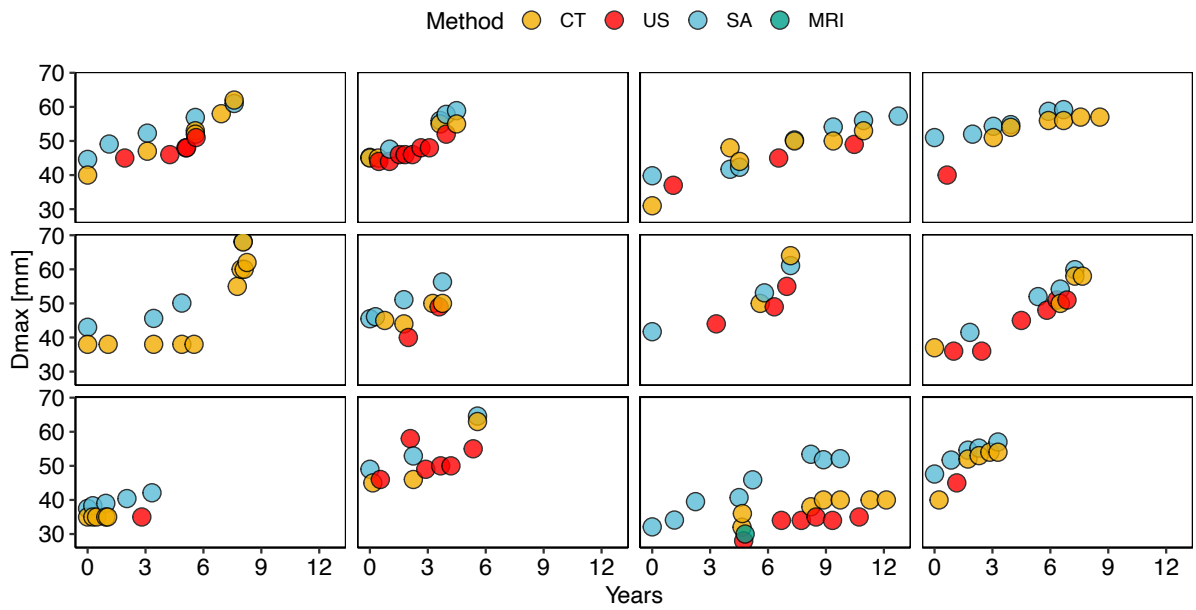
Supplementary Material



Supplementary Figure 1. Growth rates of PWS and PWRI by patient characteristics.



Supplementary Figure 2. Total aneurysm volume over time. A single plot represents one patient, and a dot represents one CTA examination. Y axis denotes the maximum aneurysm volume (cm³), and the x-axis time (in years) from inclusion into the study.



Supplementary Figure 3. Diameter measurements for twelve patients over time. Colors indicate CT (computed tomography), US (ultrasound), SA (semi-automatic), and MRI (magnetic resonance imaging).

Supplementary Table 1. Mixed effects model of ILT-ratio over time.

<i>Predictors</i>	ILT ratio (%)		
	<i>Estimates</i>	<i>CI</i>	<i>p</i>
(Intercept)	22.25	19.39 – 25.11	<0.001
ILT-ratio % /year	2.63	2.13 – 3.14	<0.001
Observations	384		
Marginal R ² / Conditional R ²	0.166 / 0.919		

Supplementary table 2. Regression model of peak wall stress and peak wall rupture index as estimated by ILT ratio and aneurysm volume

<i>Predictors</i>	Peak Wall Stress (kPa)			Peak Wall Rupture Index (%)		
	<i>Estimates</i>	<i>95 % CI</i>	<i>p</i>	<i>Estimates</i>	<i>95% CI</i>	<i>p</i>
(Intercept)	83.58	67.44 – 99.72	<0.01	9.47	5.80 – 13.15	<0.01
ILT-ratio (%)	33.19	-10.84 – 77.23	0.14	6.92	-4.08 – 17.93	0.22
Aneurysm Volume (cm ³)	1.16	1.03 – 1.29	<0.01	0.25	0.22 – 0.29	<0.01
ILT-ratio * Aneurysm volume	-1.25	-1.55 – -0.96	<0.01	-0.19	-0.26 – -0.12	<0.01
Observations	384			384		
Marginal R ² / Conditional R ²	0.609 / 0.893			0.216 / 0.961		