

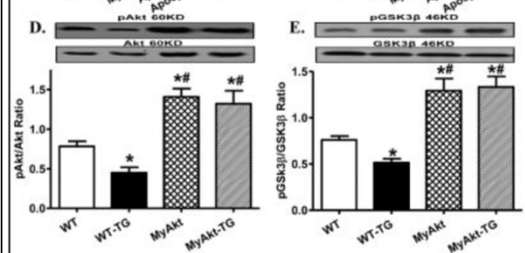
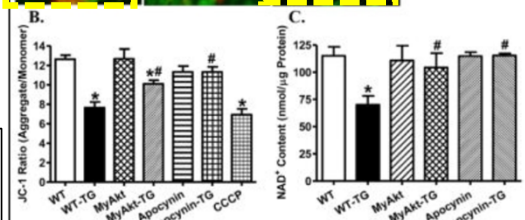
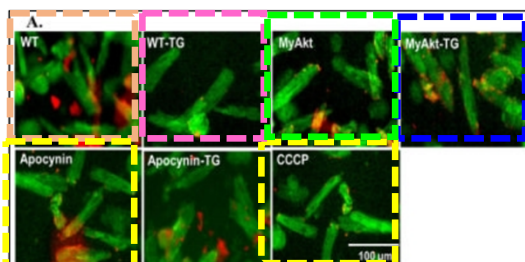
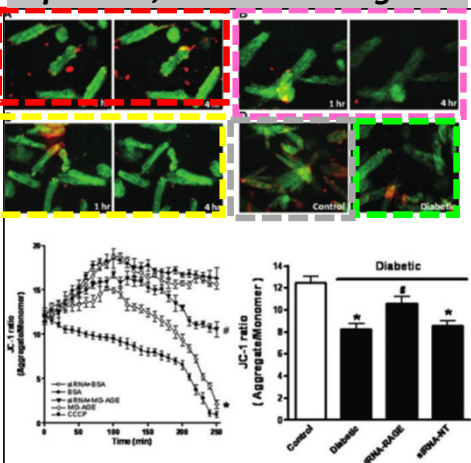
SERIES OF PAPERS IN 2009-2012 share images described as distinct experimental outcomes

ISSUE CATEGORIES

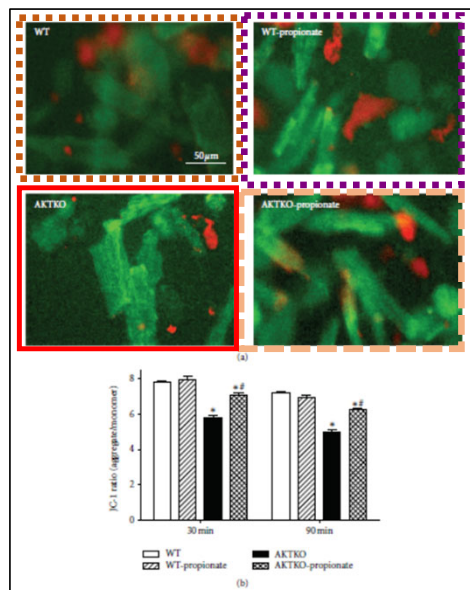
1 - Inappropriate use of controls

5 - Image reuse + manipulation

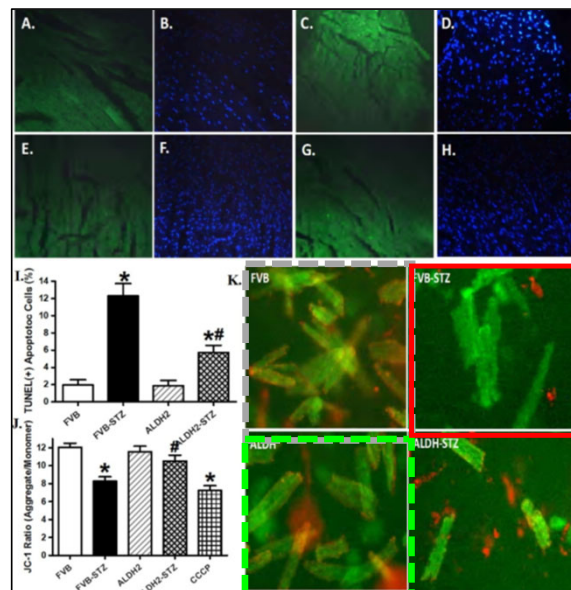
Paper 218, 2009 JCOMM Figure 5



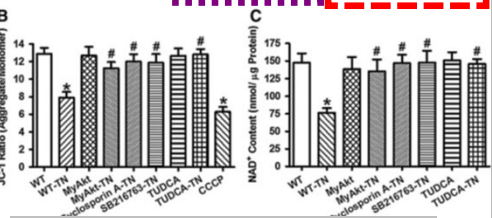
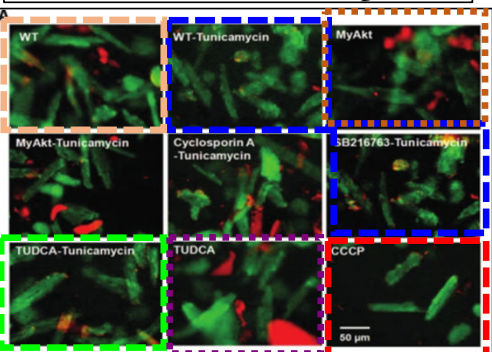
Paper 272, 2011 FRBM Figure 6



Paper 283, 2012 Exp DR Figure 3



Paper 292, 2012 BMC Med Figure 7



Paper 271, 2011 ARS Figure 9

OBSERVATIONS: Single images reported as distinct experimental outcomes in multiple papers

COLOR CODED DASHED BOXES[]: Image(s) appear reused over time to represent distinct experimental outcomes often having scale, rotation, brightness/contrast adjustment and other alterations between re-used images

1. Paper 218, 2009
JCM Figure 5

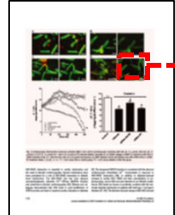
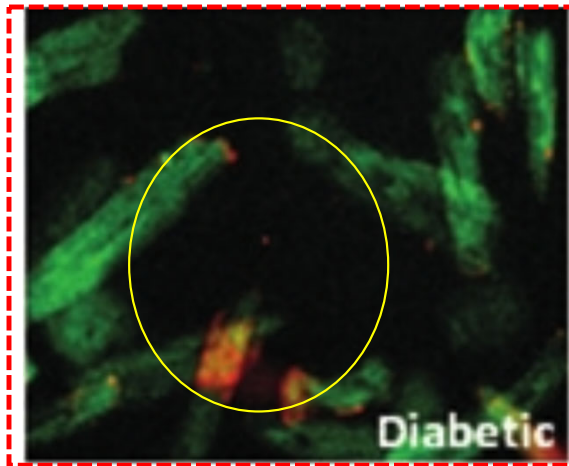


Figure 5D 1. Diabetic



2. Paper 271, 2011
ARS Figure 9

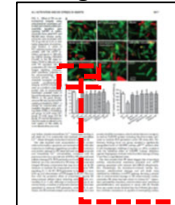
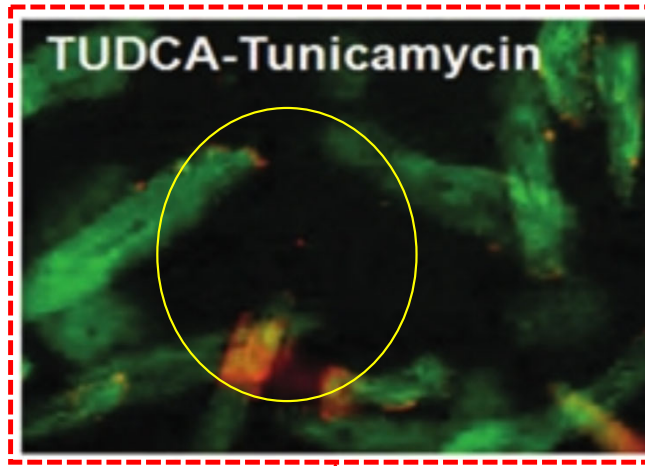


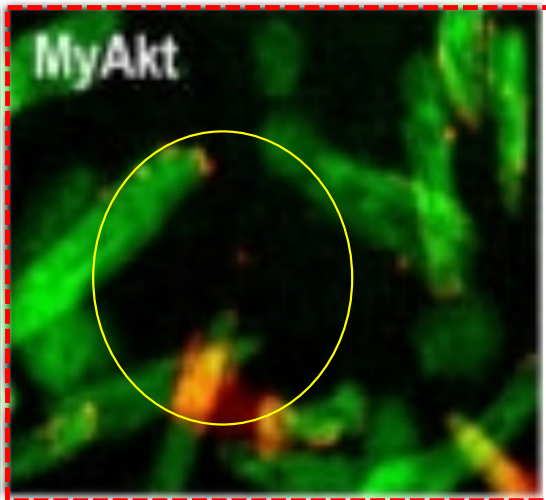
Figure 9A 2. TUDCA-Tunicamycin - treatment



3. Paper 272, 2011
FRBM Figure 6



Figure 6A 3. MyAkt



4. Paper 292, 2012
BMC Med Figure 7

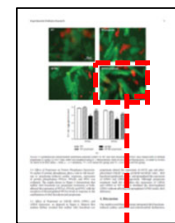
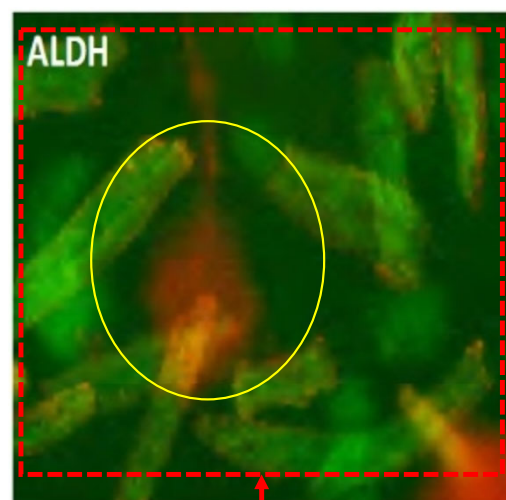


Figure 7K 4. ALDH



ISSUE CATEGORIES

- 1 - Inappropriate use of controls
- 5 - Image reuse + manipulation

Examples of issues between duplicated images (NOT EXHAUSTIVE)

OBSERVATIONS: Single image reported as distinct experimental outcomes with alterations between images apparent

RED DASHED BOXES [] Single image reported as:

- 1) **STZ-induced diabetic mice** (2009 JCM paper)
- 2) **TUDCA-Tunicamycin treatment** (2011 ARS paper)
- 3) **MyAKT mice** (2011 FRBM paper)
- 4) **ALDH expression** (2012 BMC Med paper)

YELLOW OVALS []

Features are identical. However alterations appear to have been applied that result in the identical features looking slightly different.

Differences in coloring, scale, contrast, brightness, and focus between the two images.

ISSUE CATEGORIES

- 1 - Inappropriate use of controls
- 5 - Image reuse + manipulation

Paper 271, 2011 ARS Figures 3, 6 and 8

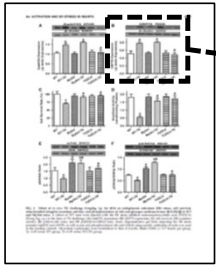


Figure 3

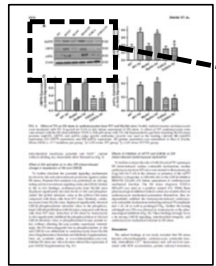


Figure 6

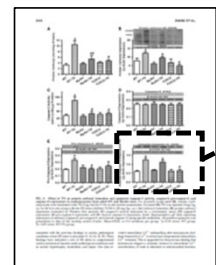


Figure 8

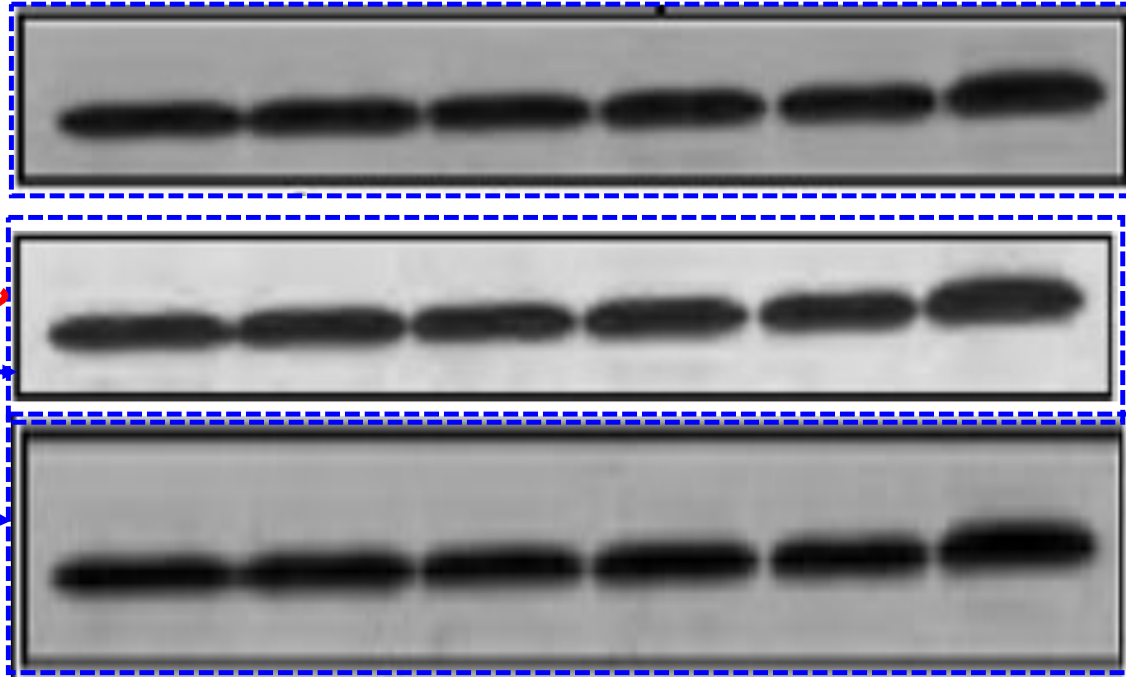
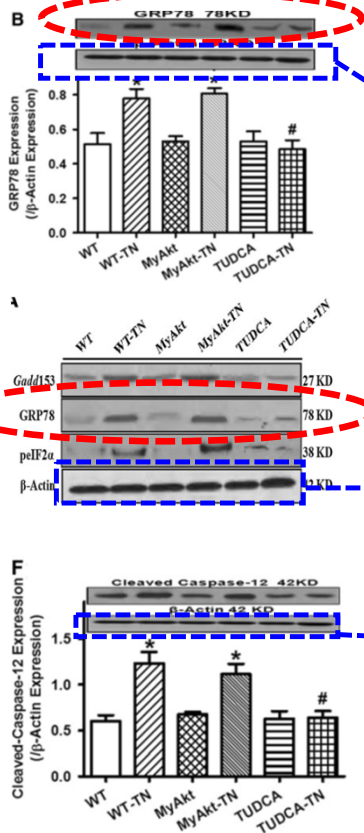


Figure 3B, β-actin

Flip vertical + stretch ↕



Figure 6A, β-actin

Figure 8F, β-actin

Flip vertical + stretch ↕



IMAGES USED: Image snapshot from paper (pdf)

ACTION: image isolation and enlargement and comparison

OBSERVATIONS:

BLUE DASHED BOXES □ β-actin bands of Figures 3B, 6A and 8F appear to be reused and paired with different protein targets, including two distinct GRP78 profiles **RED DASHED OVALS** ○ (rotation and stretching and contrast/brightness adjustment between the series)

218 - <https://onlinelibrary.wiley.com/doi/pdf/10.1111/j.1582-4934.2008.00547.x>

Rec'd June 24, 2008

Accepted Sept 23, 2008

Print 2009

271- <https://www.ncbi.nlm.nih.gov/pmc/articles/PMC3176349/>

Rec'd Nov 3, 2010

Revised May 5, 2011

Accepted May 5, 2011

272 – <https://www.sciencedirect.com/science/article/pii/S0891584911005715>

Rec'd May 16, 2011

Revised Sept 1, 2011

Accepted Sept 2, 2011

E-Pub'd Sept 16, 2011

283 – <https://www.hindawi.com/journals/jdr/2012/851717/>

Rec'd Jun 27, 2011

Accepted Aug 1, 2011

Pub'd Sept 22, 2011

292 – <https://bmcmedicine.biomedcentral.com/articles/10.1186/1741-7015-10-40#article-info>

Rec'd Jan 18, 2012

Accepted April 23, 2012

Pub'd April 23, 2012