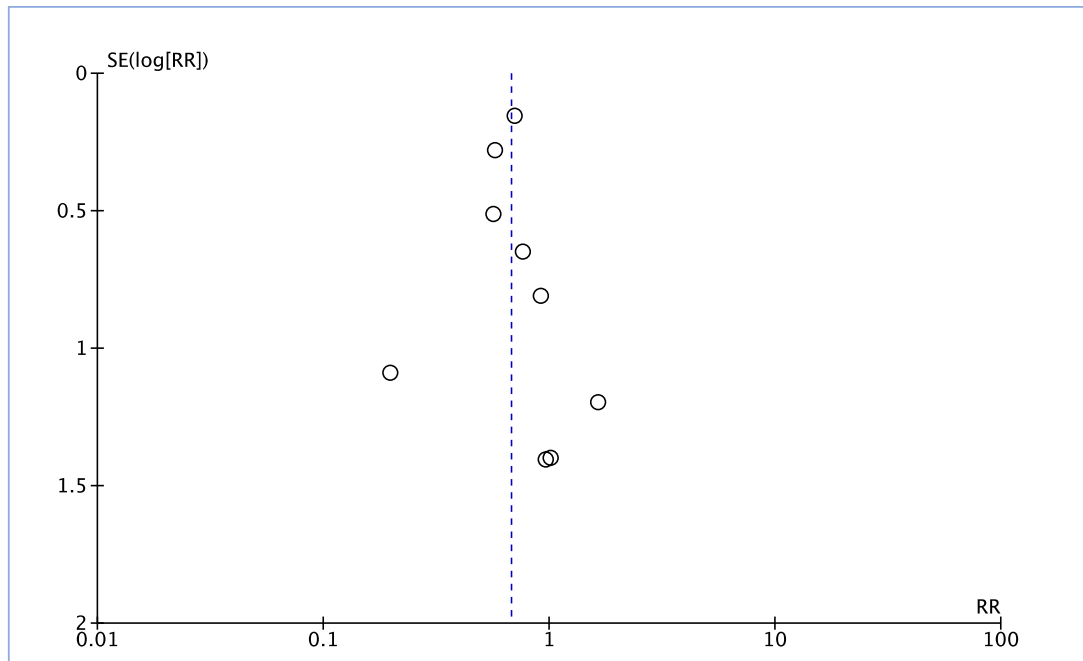


**Kangaroo mother care for preterm or low birth weight infants: A
systematic review and meta-analysis**

Supplement 2: eTables and eFigures

eTable 1: Birth weight and gestational age of enrolled neonates in the included studies for the primary outcome of mortality during birth hospitalization/28 days

KMC vs conventional care					
S No	Author	Mean GA category assigned for subgroup analysis	Mean BW category assigned for subgroup analysis	Mean/median GA at birth weeks	Mean/median BW grams
1	Acharya	<34	≤2000	32.22± 2.4 and 32.54± 1.87	
2	Boo	<34	≤2000		
3	Cattaneo	<34	≤2000	33.7 (2.5)	1622 (239)
4	Charpak	<34	≤2000	33.6 (2.5)	1705 (261)
5	Eka Pratiwi	≥34	>2000	35.6 (2.2)	2033 (159)
6	Ghavane	<34	≤2000	30.8 (2.1)	1170 (191)
7	Kadam	<34	≤2000	33.3 (2.1)	1467 (228)
8	Mazumdar	≥34	>2000		1.5 to 2.25 (73% were 2-2.25kg)
9	Mwenda	<34	≤2000	32.7 (range 28-36)	1514 (range 1000-1900)
10	Rojas	<34	≤2000	26.6 (2.3)	906 (245)
11	Suman	≥34	≤2000	32.7 (28-36)	1683.4 (235)
12	Worku	<34	≤2000	31.59	1514.83



eFigure 1: KMC vs. conventional care - funnel plot for ‘mortality during birth hospitalization/28 days of life

SE, standard error; RR, relative risk

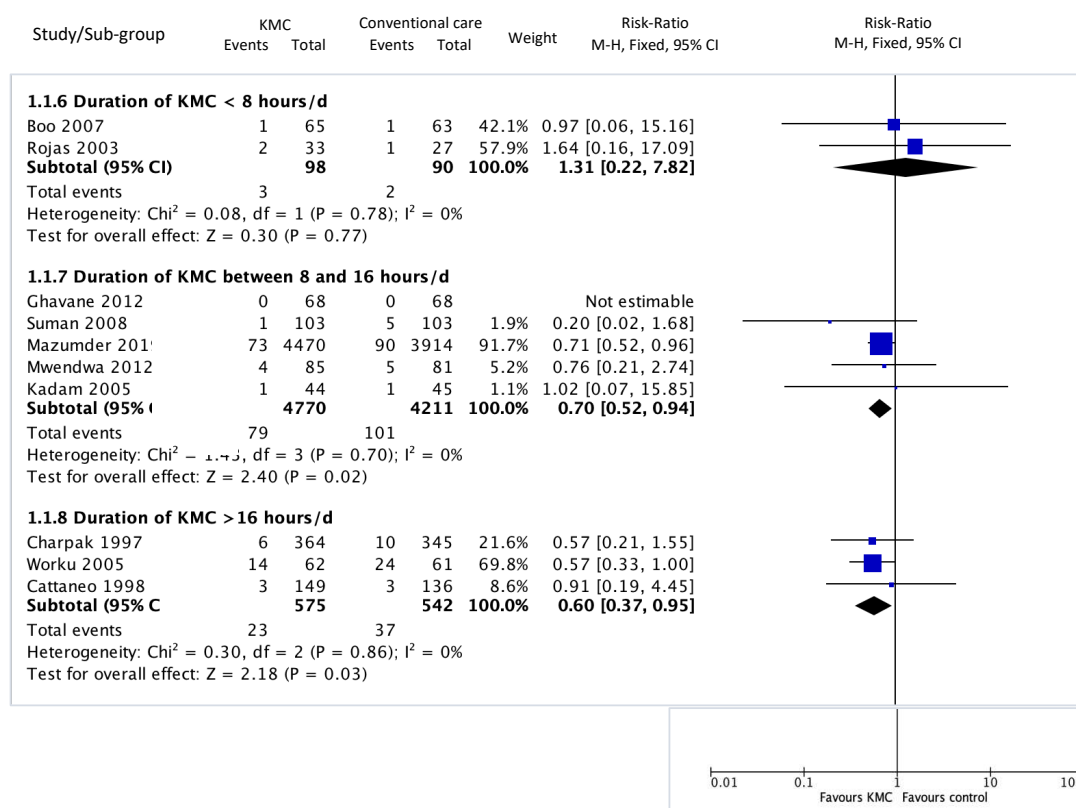
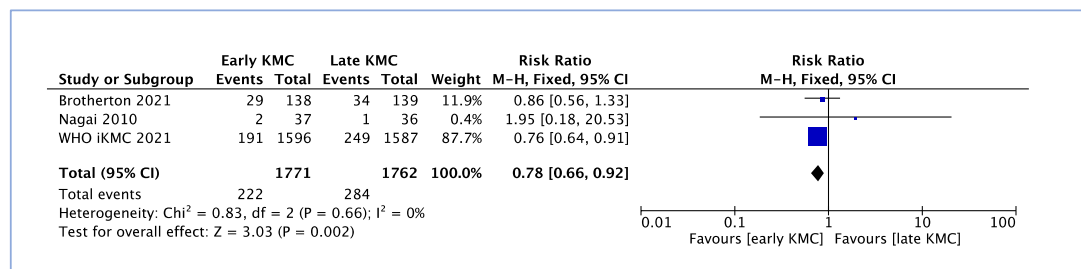


Figure 2: KMC vs. conventional care - mortality at birth hospitalization/28 days of life
(Subgroup analysis by the duration of KMC achieved in the studies)



eFigure 3: Early-initiated vs. late-initiated KMC: mortality by 28 days of life