

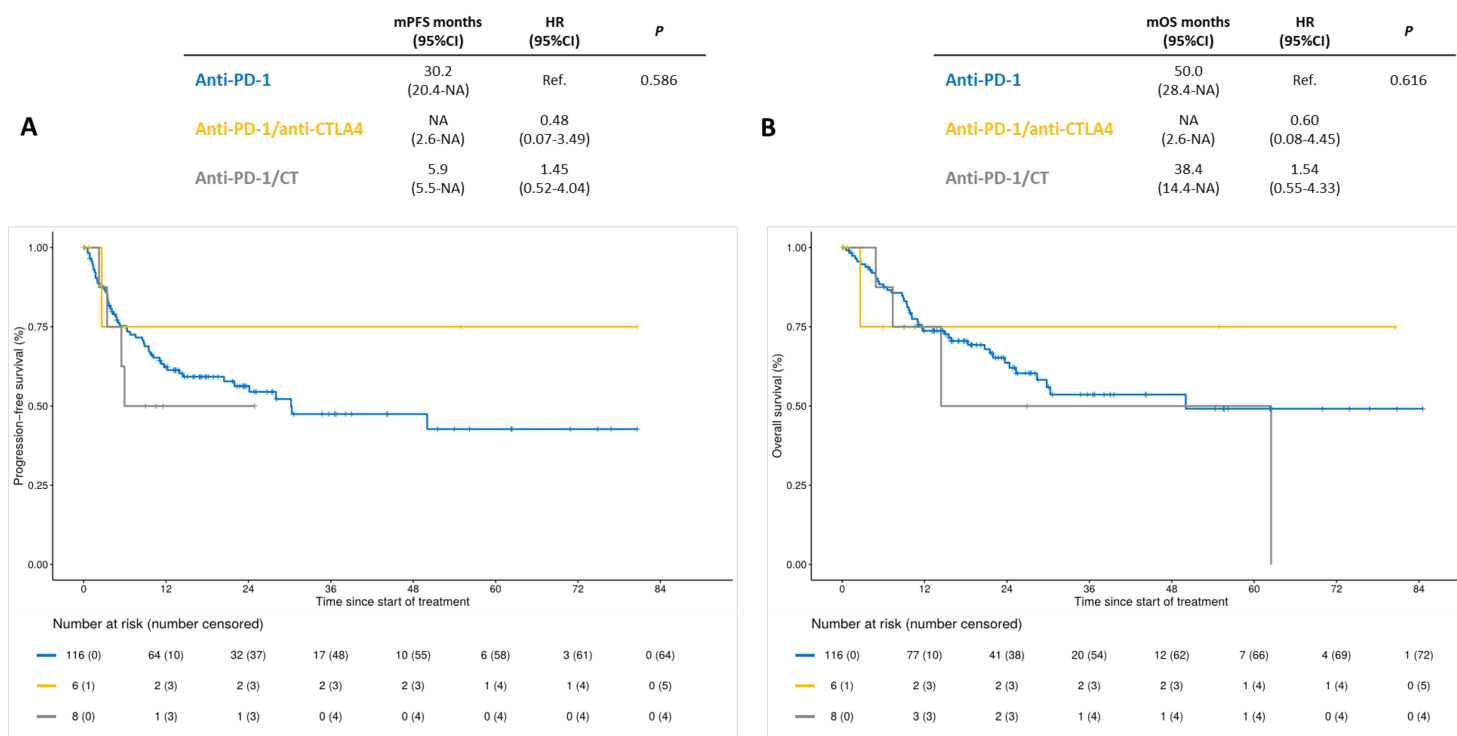
Outcomes and a prognostic classifier in patients with microsatellite instability-high metastatic gastric cancer receiving PD-1 blockade

Giovanni Randon, Yu Aoki, Romain Cohen, Leonardo Provenzano, Vincenzo Nasca, Samuel J. Klempner, Steven B. Maron, Riccardo Cerantola, Joseph Chao, Lorenzo Fornaro, Walter Ferrari Bravo, Filippo Ghelardi, Margherita Ambrosini, Paolo Manca, Massimiliano Salati, Akihito Kawazoe, Valerie Zhu, Darren Cowzer, Virginia Genovesi, Sara Lonardi, Kohei Shitara, Thierry André and Filippo Pietrantonio

Supplemental Material

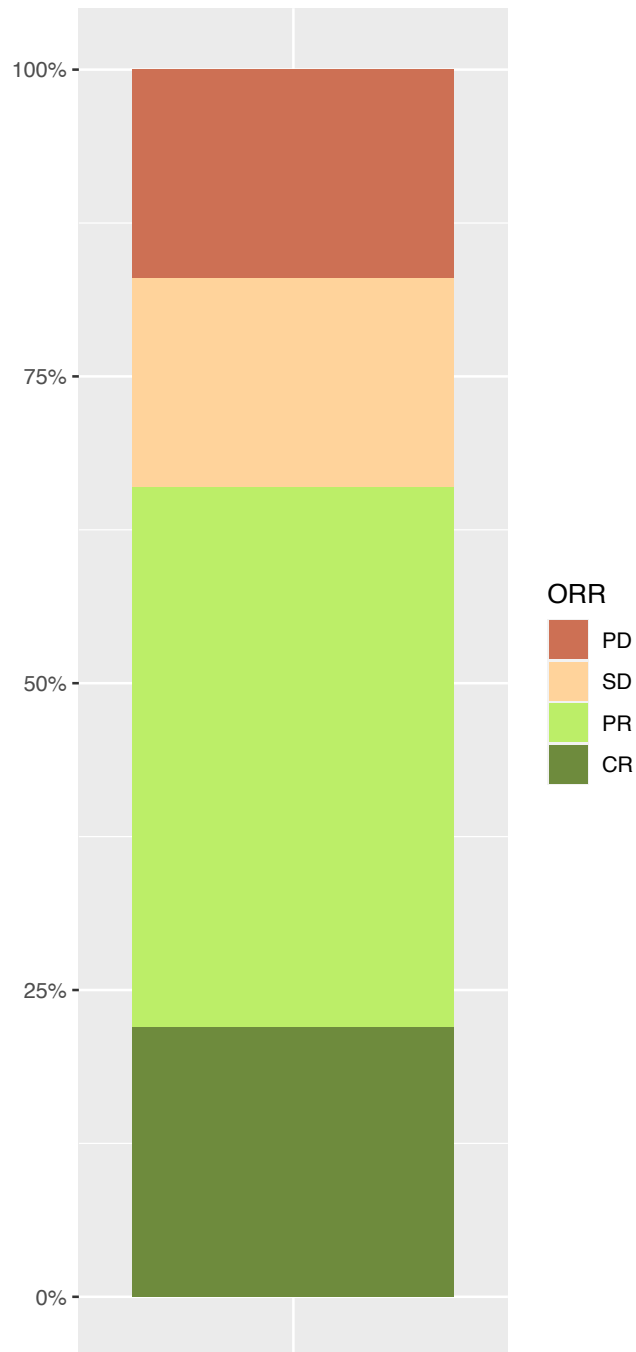
- Supplemental Figure S1
- Supplemental Figure S2
- Supplementary Table S1

Supplemental Figure S1. Kaplan-Meier estimates for progression-free survival (panel A) and overall survival (panel B) according to anti-PD-1-based therapy.



Abbreviations. mOS: median overall survival. mPFS: median progression-free survival.

Supplemental Figure S2. Response parameters in patients with measurable disease according to RECIST v1.1.



Abbreviations. CR: complete response. ORR: objective response rate. PD: progressive disease. PR: partial response. RECIST: Response Evaluation Criteria in Solid Tumors. SD: stable disease.

Supplemental Table S1. Multivariate analysis for OS and scoring system.

Risk score for overall survival						
Characteristics		Median HR	IQ range	Log(HR)	Normalized log(HR)	Rounded score
ECOG PS	1 vs 0	1.40	0.68-2.90	0.15	1.00	1
ECOG PS	2 vs 0	5.98	1.91-18.68	0.78	5.20	5
T resected	No vs Yes	2.27	1.07-5.00	0.36	2.40	2
Bone metastases	Yes vs No	4.73	1.53-14.64	0.67	4.47	4
Ascites	Yes vs No	4.08	1.85-8.96	0.61	4.06	4

Abbreviations. ECOG PS: Eastern Cooperative Oncology Group Performance Status. IQ range: interquartile range. T: primary tumor.