

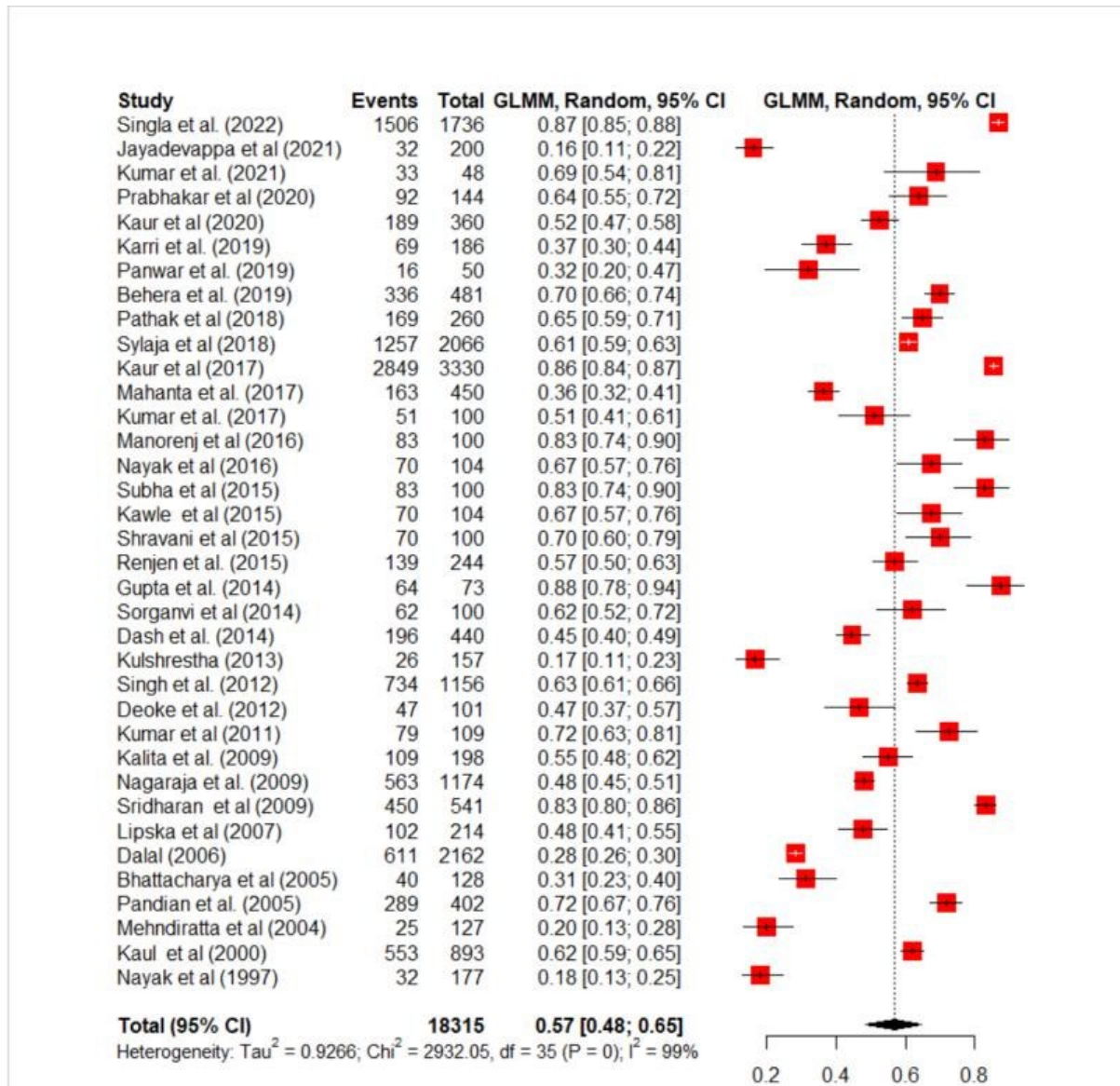
Supplementary Material (1) -Search Strategy using keywords

Example of search terms used in PubMed

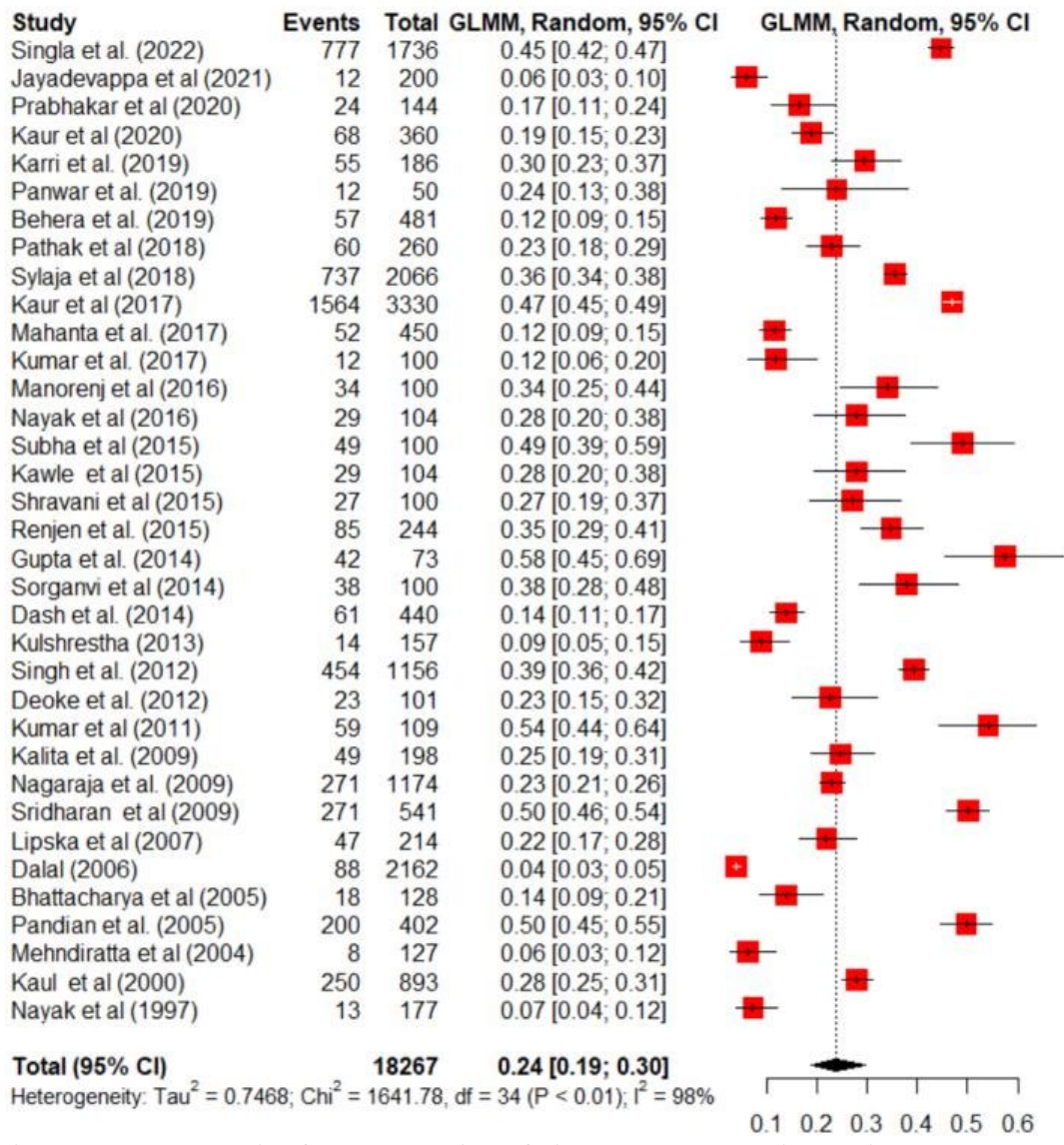
| Search concept | MeSH terms and keywords |
|----------------|---|
| Stroke | “stroke” [MeSH] OR "ischemic stroke"[MeSH] OR "hemorrhagic stroke"[MeSH] OR "thrombotic stroke" [MeSH] "embolic stroke"[MeSH] OR “acute stroke” [tiab] OR "ischemic stroke" [tiab] OR "hemorrhagic stroke" [tiab] OR "thrombotic stroke" [tiab] OR "embolic stroke" OR “cerebrovascular accident” [tiab] “cerebral stroke” [tiab] |
| Risk factors | "prevalence" [MeSH] OR "epidemiology" [MeSH] OR “risk factors” [MeSH] OR "cardiometabolic risk factors" [MeSH] OR "hypertension" [MeSH] OR "diabetes mellitus" [MeSH] OR "alcoholism" [MeSH] OR "alcohol drinking" [MeSH] OR "dyslipidemias" [MeSH] OR "smoking" [MeSH] "tobacco use" [MeSH] OR “risk factors” [tiab] OR “health correlates” [tiab] OR "cardiometabolic risk factors"[tiab] OR "hypertension" [tiab] OR "diabetes mellitus" [tiab] OR “alcohol use disorder [tiab] OR “alcohol abuse” [tiab] OR “alcohol dependent” [tiab] OR "dyslipidemias" [tiab] OR "smoking"[tiab] OR "tobacco use"[tiab] “tobacco consumption” [tiab] |
| Patients | "patients"[MeSH] OR “patient” [tiab] OR “clients” [tiab] |
| India | "india"[MeSH] OR “India” [tiab] OR “South-east Asia” [tiab] OR “low- and middle-income countries” [tiab] |

Supplementary Material (S 1.1 - 1.11 Figure)

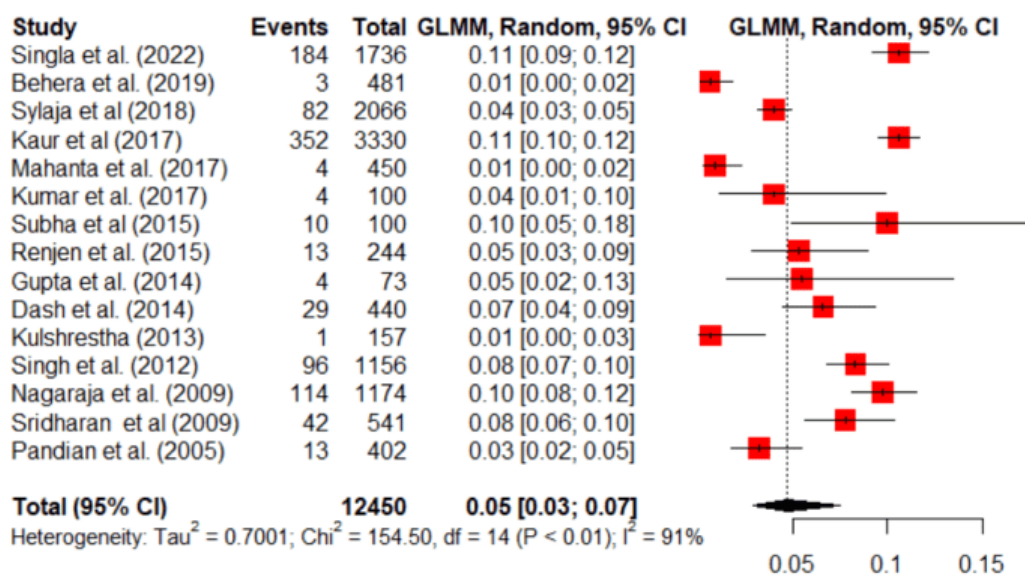
The pooled analysis of the proportion of individual risk factors and heterogeneity



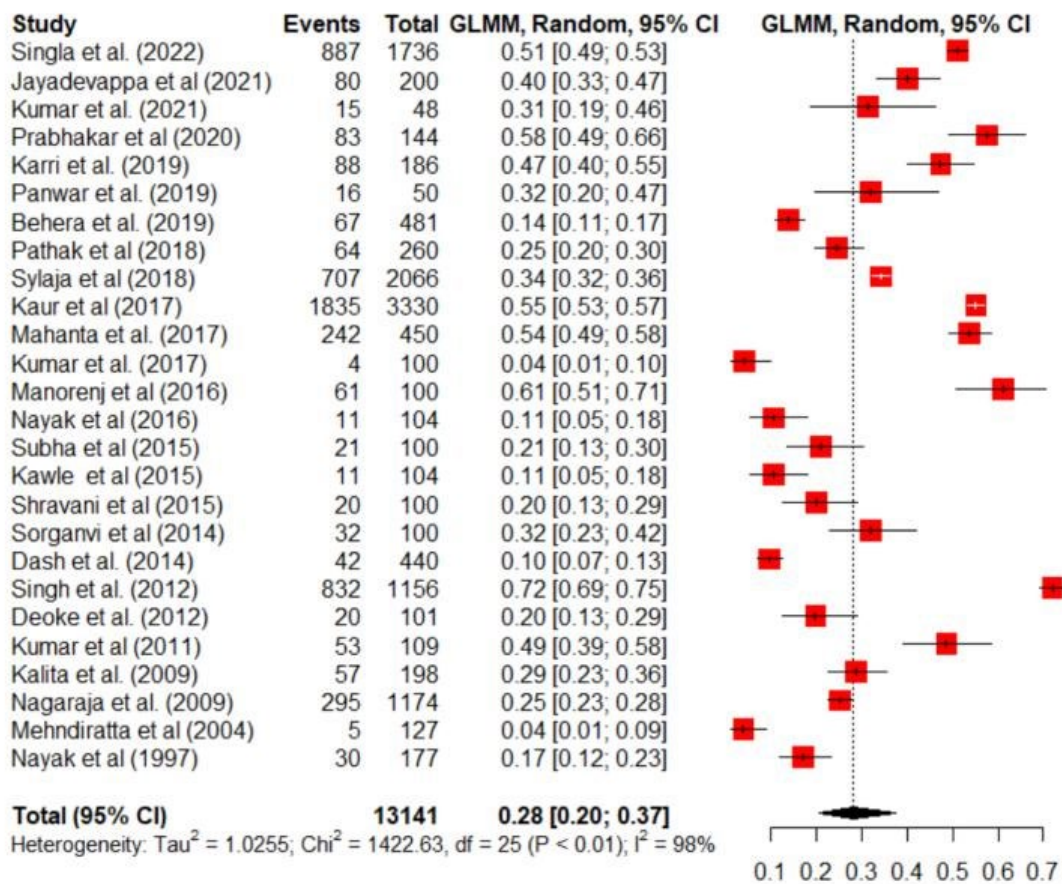
S 1.1 Figure Pooled analysis of the proportion of hypertension among patients with stroke



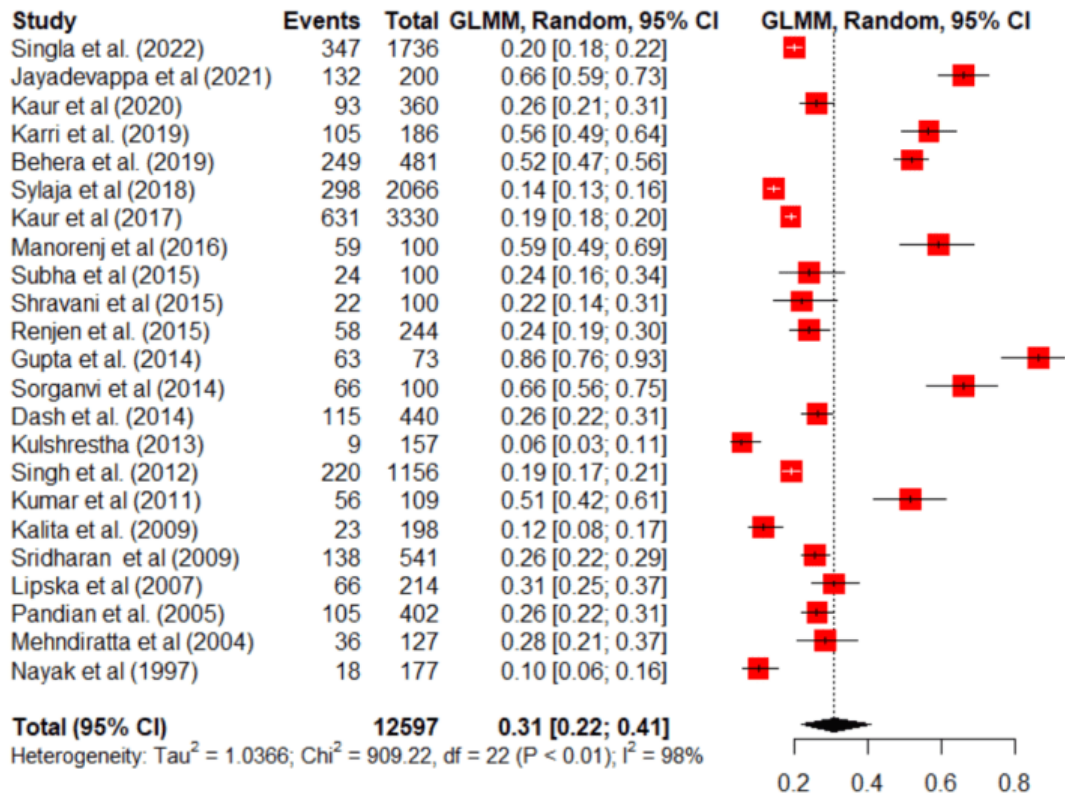
S1.2 Figure Pooled analysis of the proportion of diabetes among patients with stroke



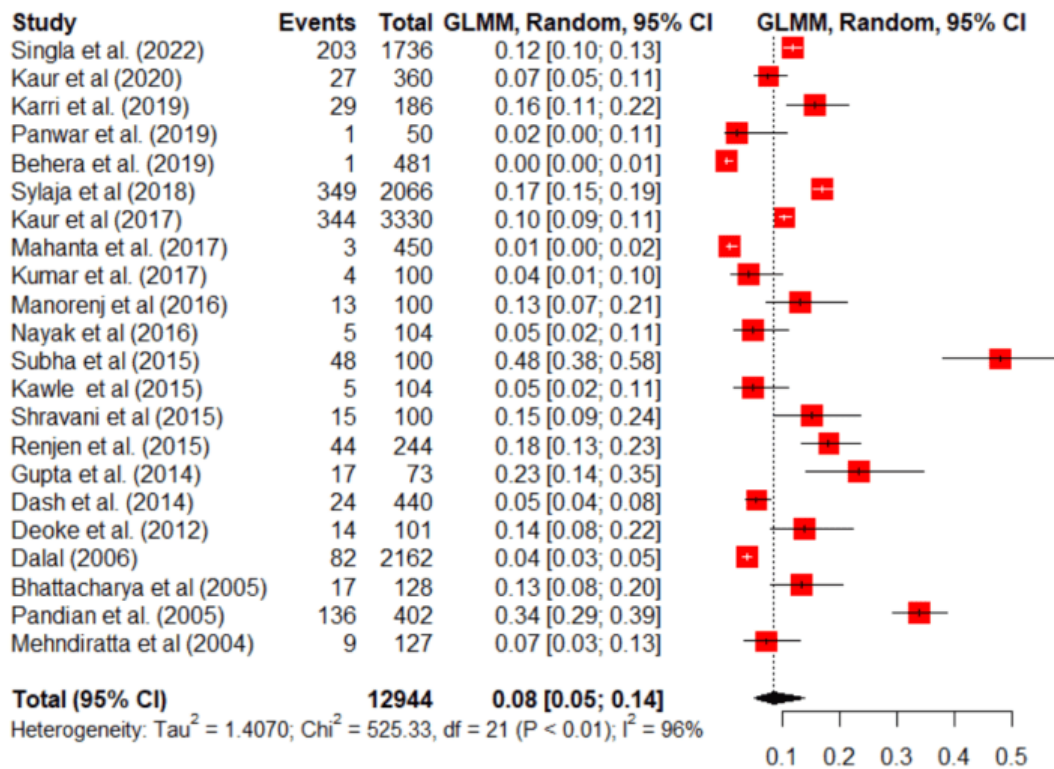
S1.3 Figure Pooled analysis of the proportion of atrial fibrillation among patients with stroke



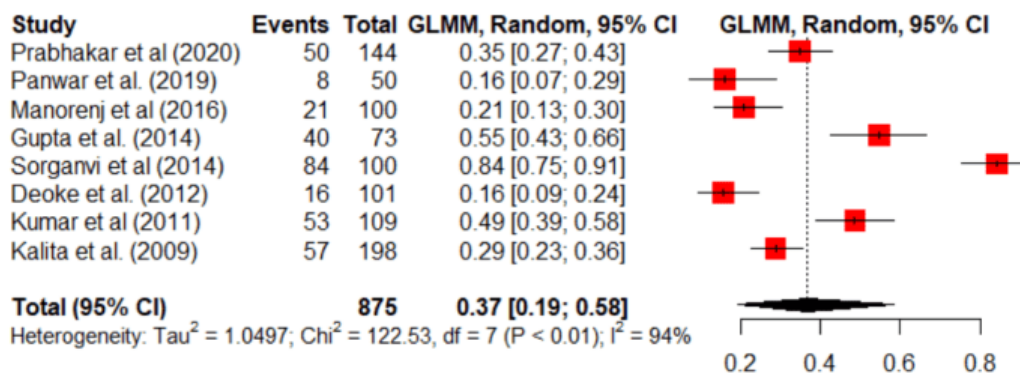
S1.4 Figure Pooled analysis of the proportion of alcohol use among patients with stroke



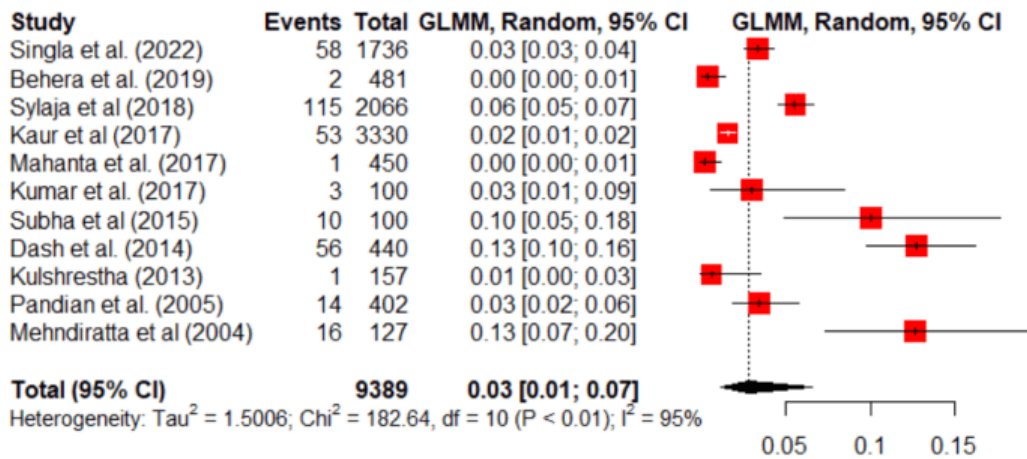
S1.5 Figure Pooled analysis of the proportion of dyslipidemia among patients with stroke



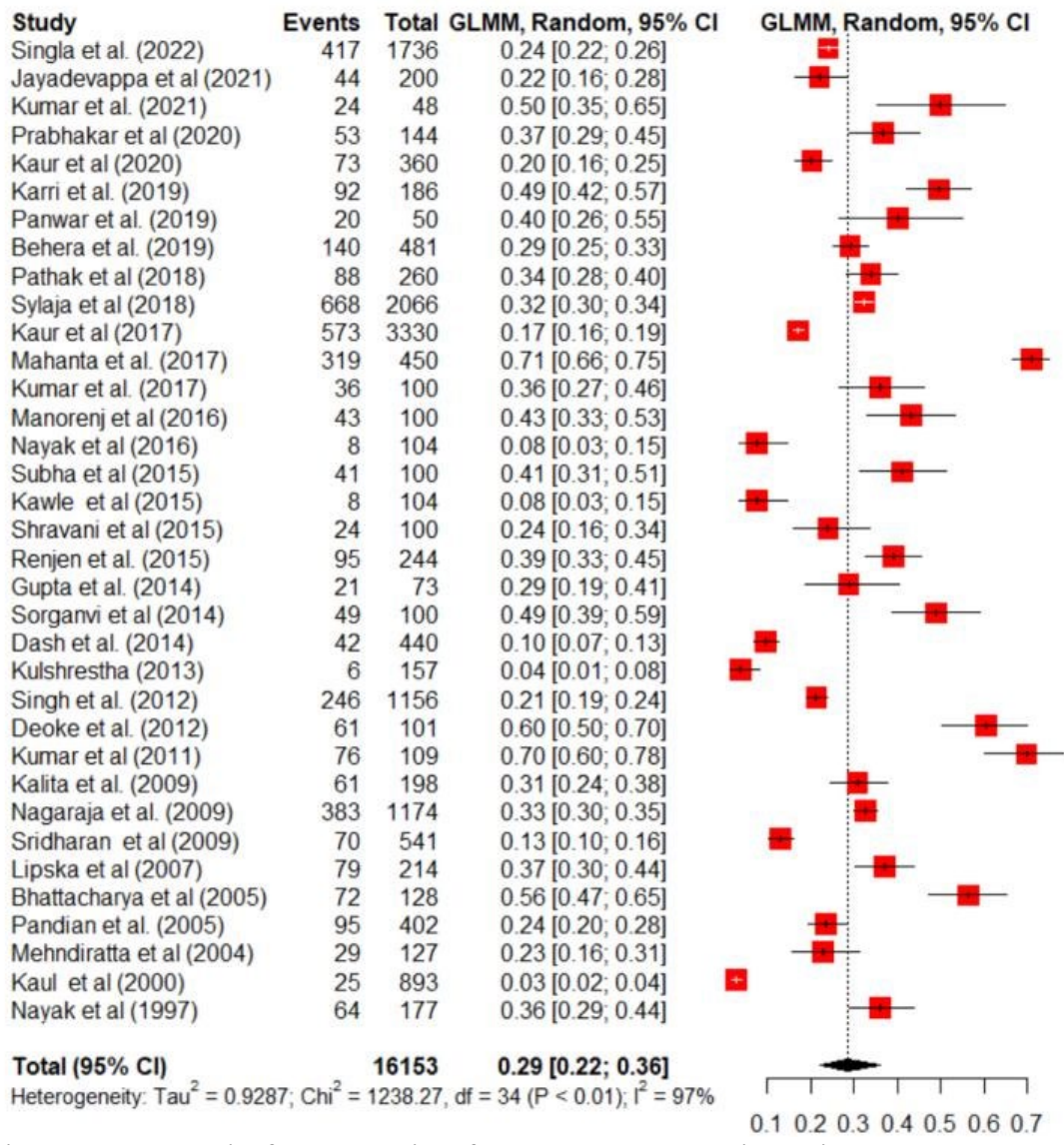
S1.6 Figure Pooled analysis of the proportion of ischemic heart disease among patients with stroke



S1.7 Figure Pooled analysis of the proportion of obesity among patients with stroke

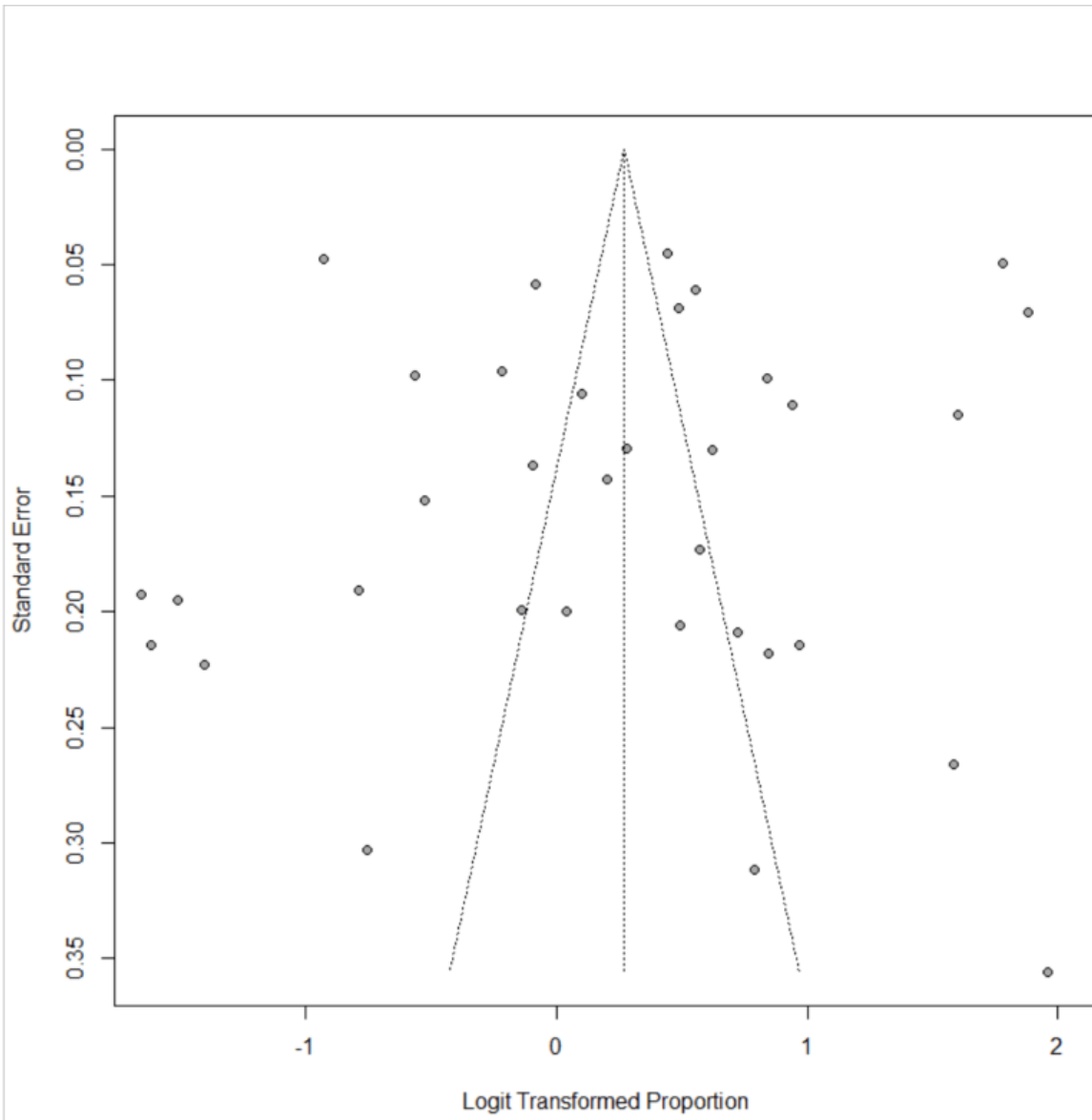


S1.8 Figure Pooled analysis of the proportion of rheumatic/valvular heart disease among patients with stroke

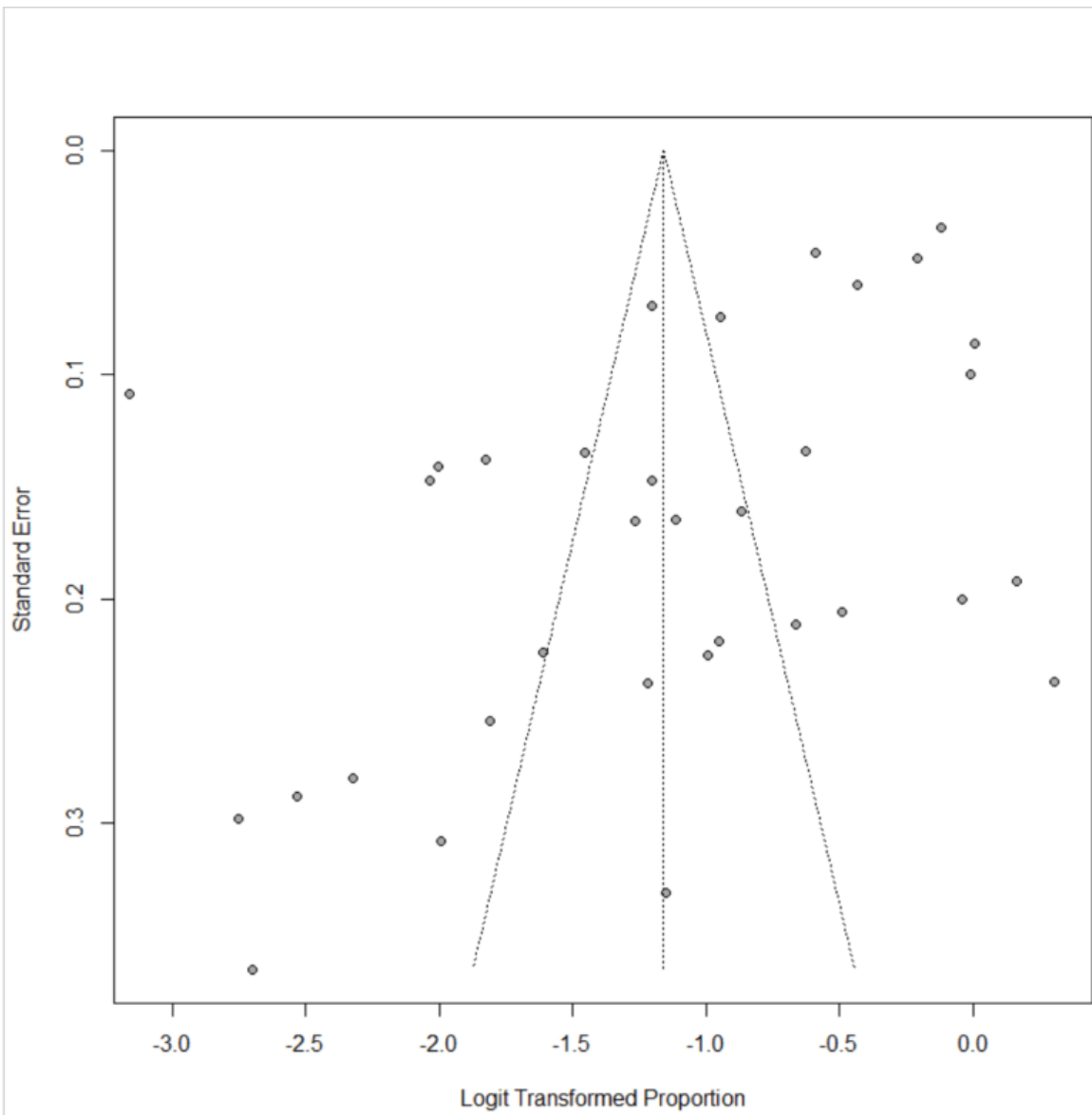


S1.9 Figure Pooled analysis of the proportion of tobacco use among patients with stroke

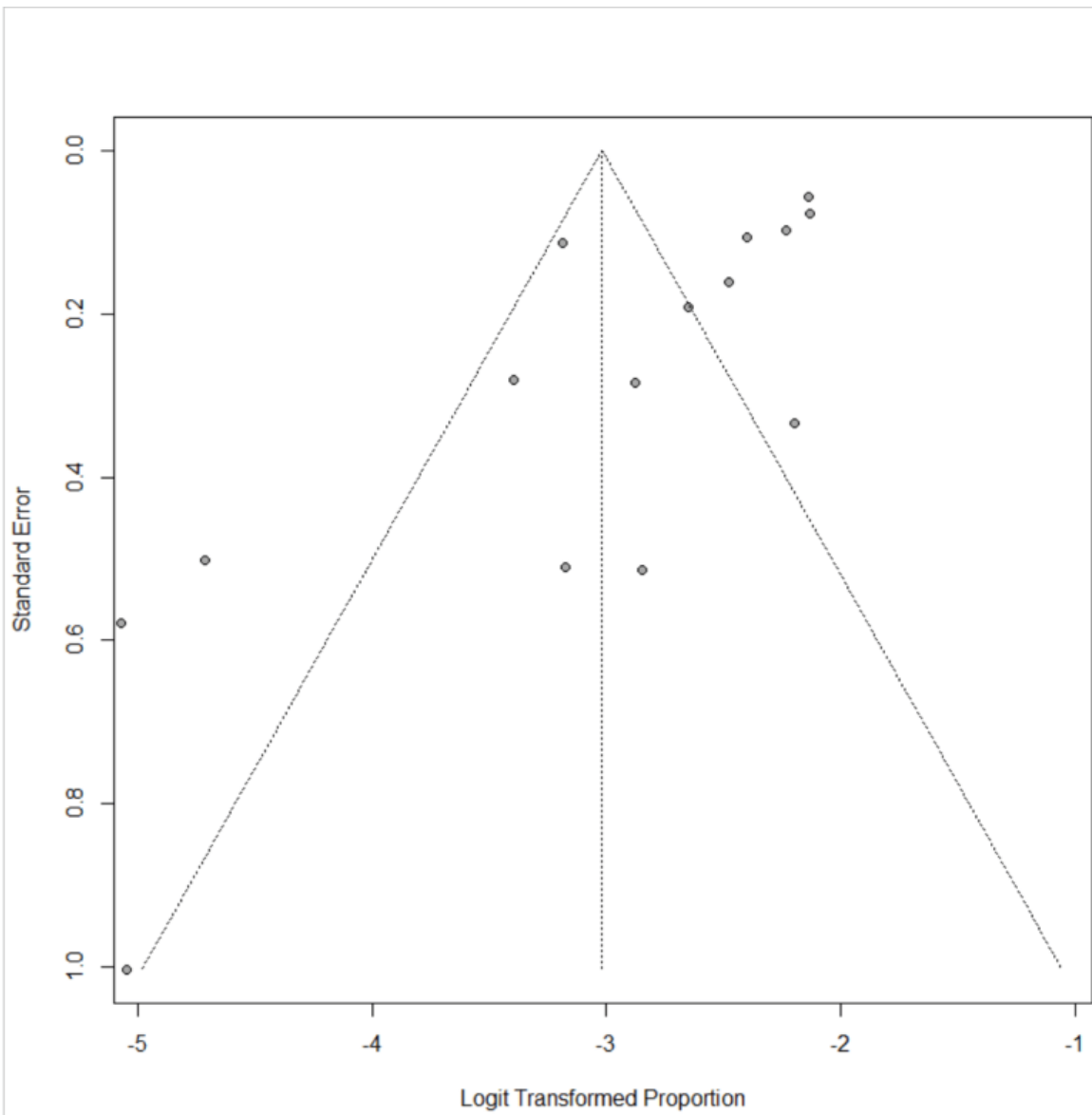
Supplementary Material (S 2.1 - 2.11 Figure)



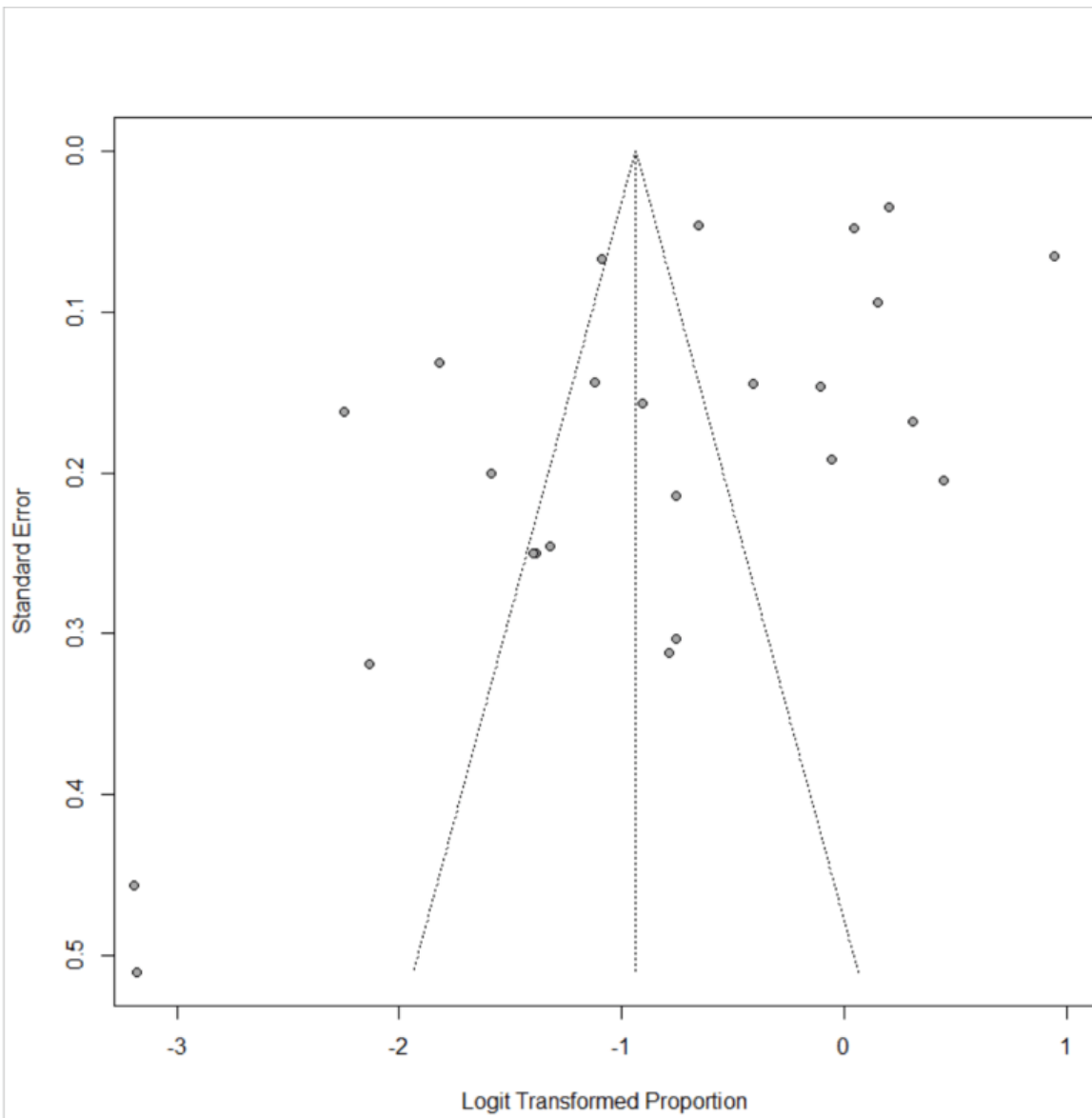
S 2.1 Figure Funnel plot regarding the proportion of hypertension among patients with stroke



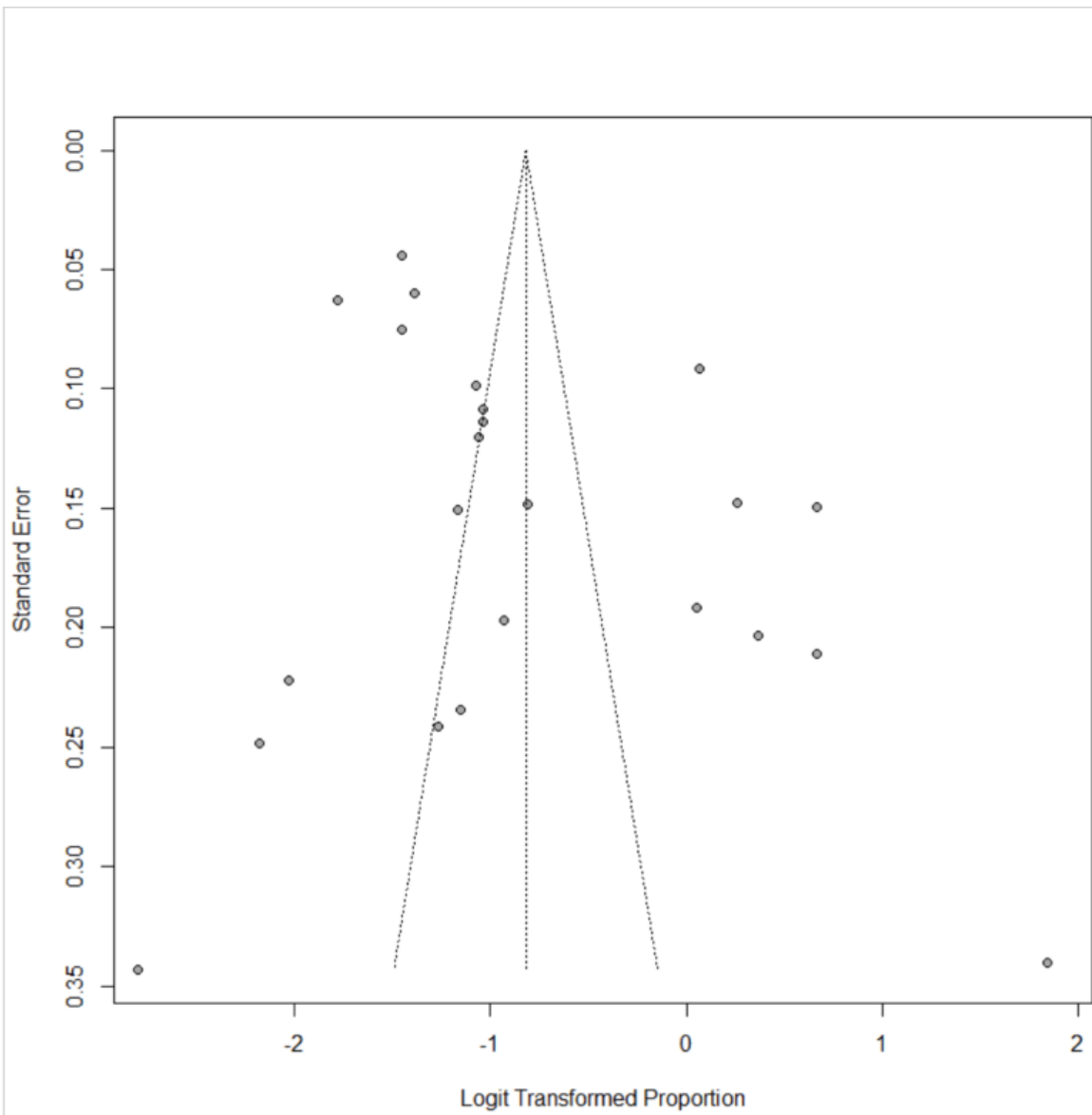
S 2.2 Figure Funnel plot regarding the proportion of diabetes among patients with stroke



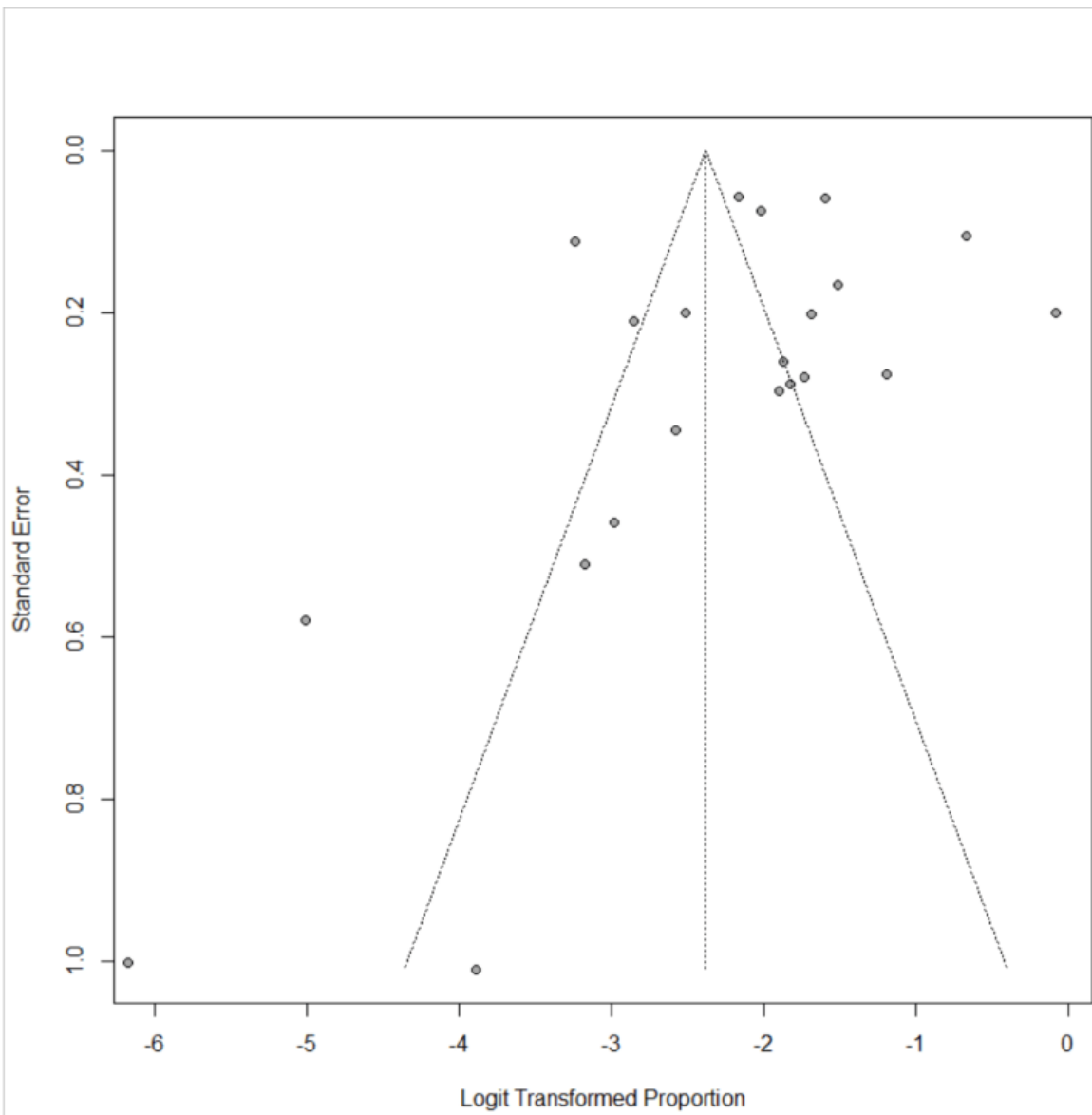
S 2.3 Figure Funnel plot regarding the proportion of atrial fibrillation among patients with stroke



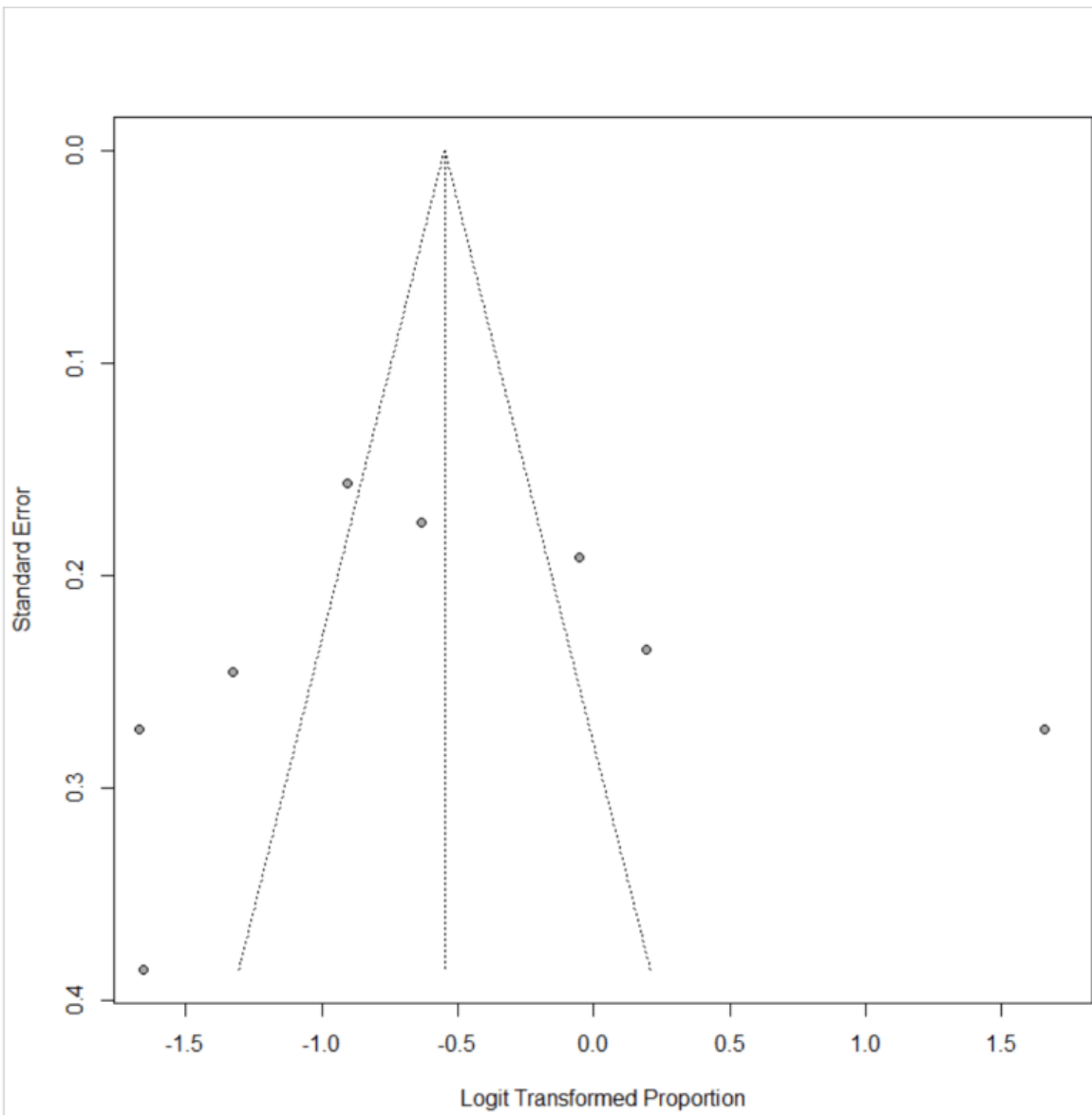
S 2.4 Figure Funnel plot regarding the proportion of alcohol use among patients with stroke



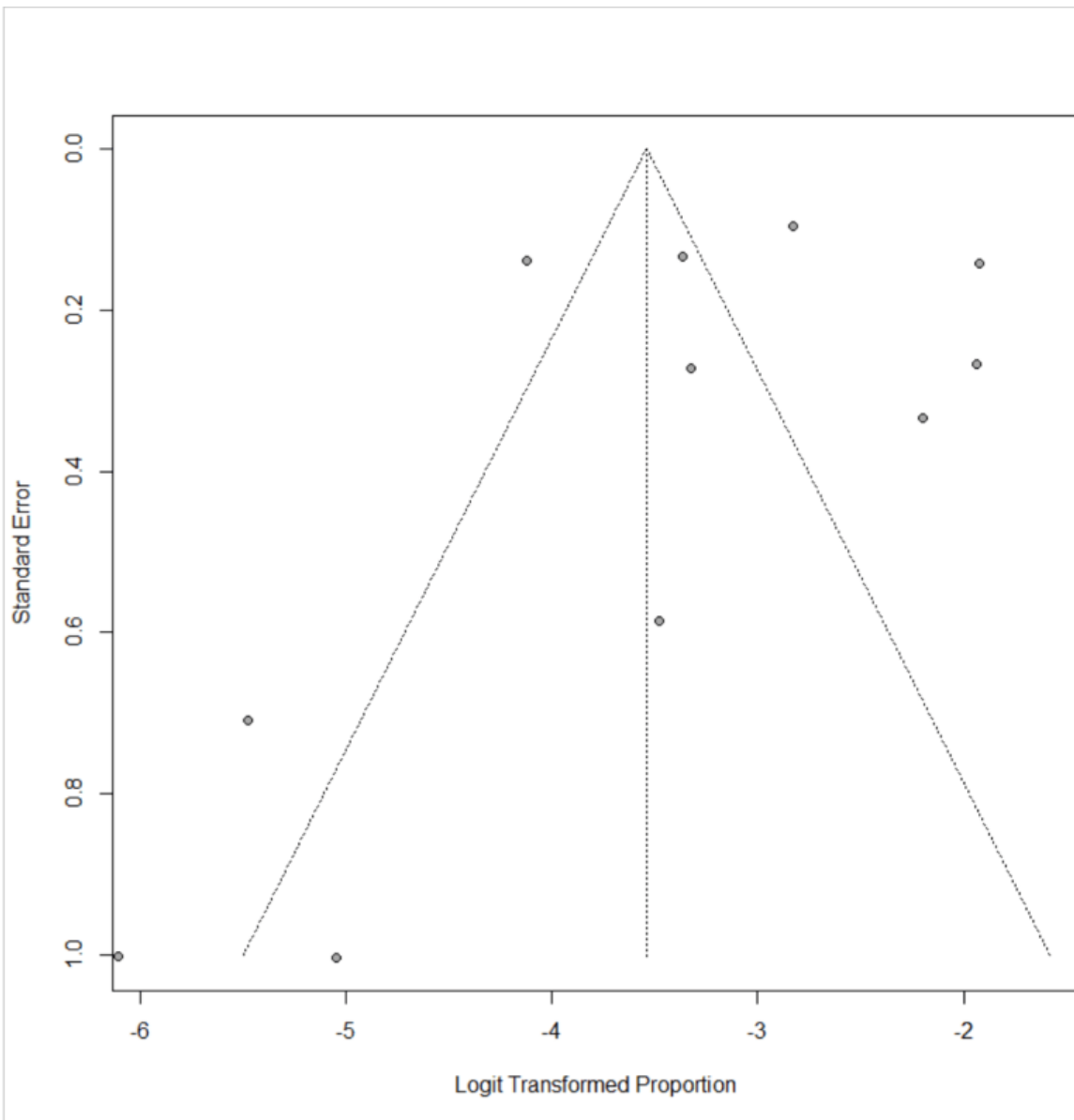
S 2.5 Figure Funnel plot regarding the proportion of dyslipidemia among patients with stroke



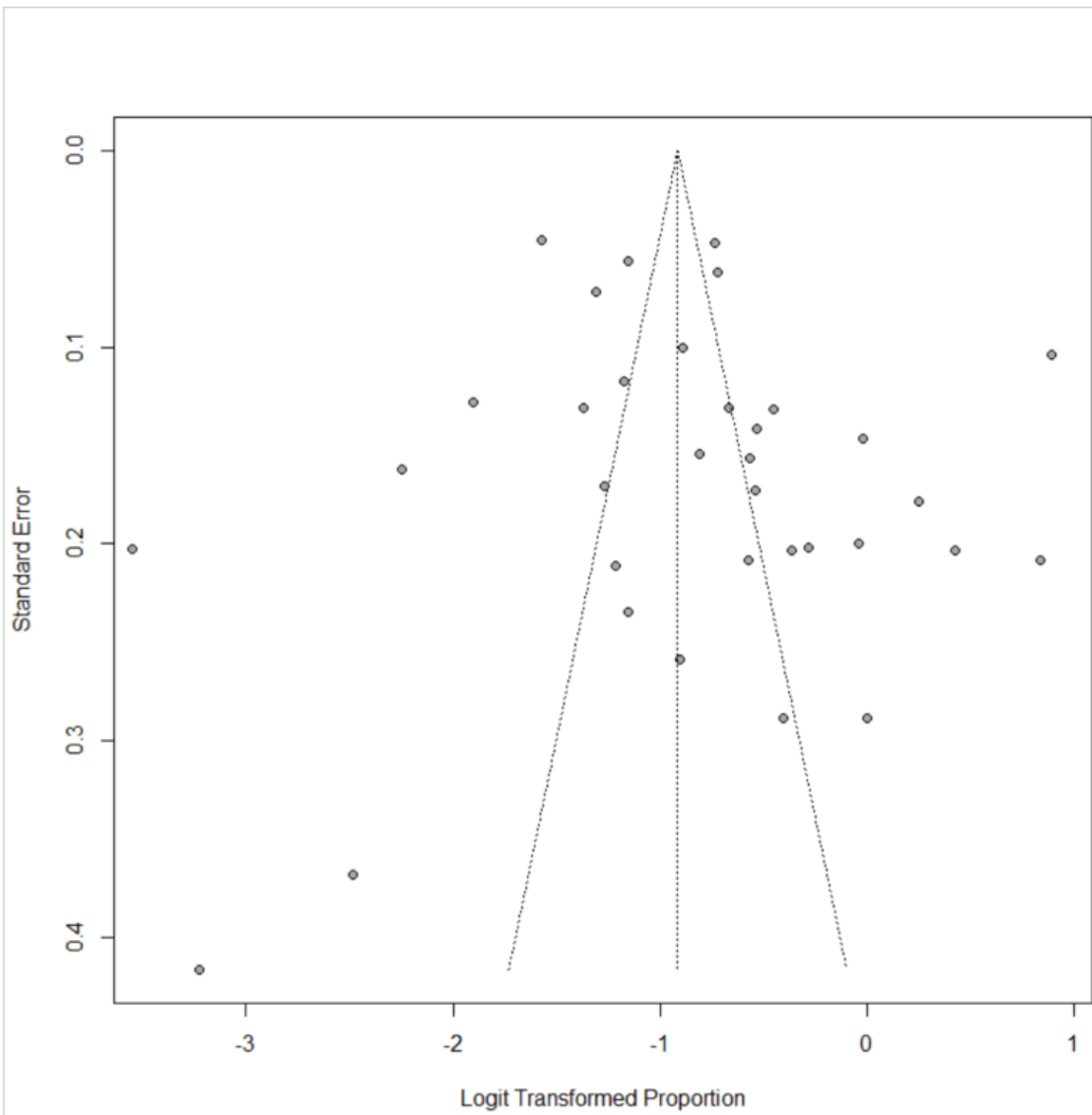
S 2.6 Figure Funnel plot regarding the proportion of ischemic heart diseases among patients with stroke



2.7 Figure Funnel plot regarding the proportion of obesity among patients with stroke



S 2.8 Figure Funnel plot regarding the proportion of rheumatic/ valvular heart disease among patients with stroke



S 2.9 Figure Funnel plot regarding the proportion tobacco use among patients with stroke