



---

# scChIX-seq infers dynamic relationships between histone modifications in single cells

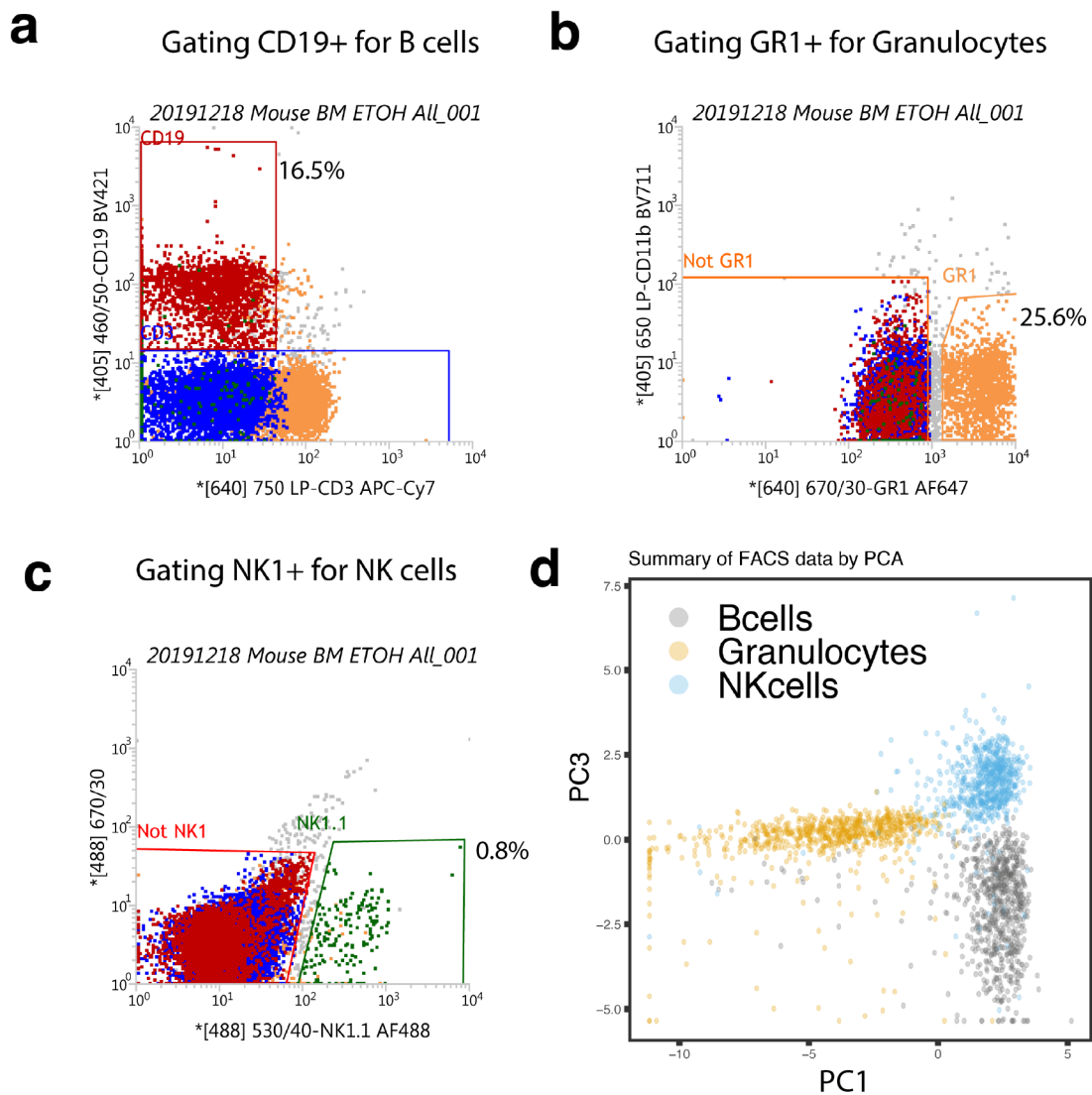
---

In the format provided by the authors and unedited

## Table of Contents

<b><u>SUPPLEMENTAL FIGURE 1 .....</u></b>	<b><u>2</u></b>
---	-----------------

# Supplementary Figure 1



Supplementary Figure 1: fluorescence-activated cell sorting (FACS) gating strategy. **(a)** Gating strategy to purify for B cells by staining for CD19+. **(b)** Gating strategy to purify for granulocytes by staining for GR1+. **(c)** Gating strategy to purify for NK cells by staining for NK1+. **(d)** Summary of the high-dimensional FACS information projected onto principal components 1 and 3, showing separation of the three cell types in FACS space.