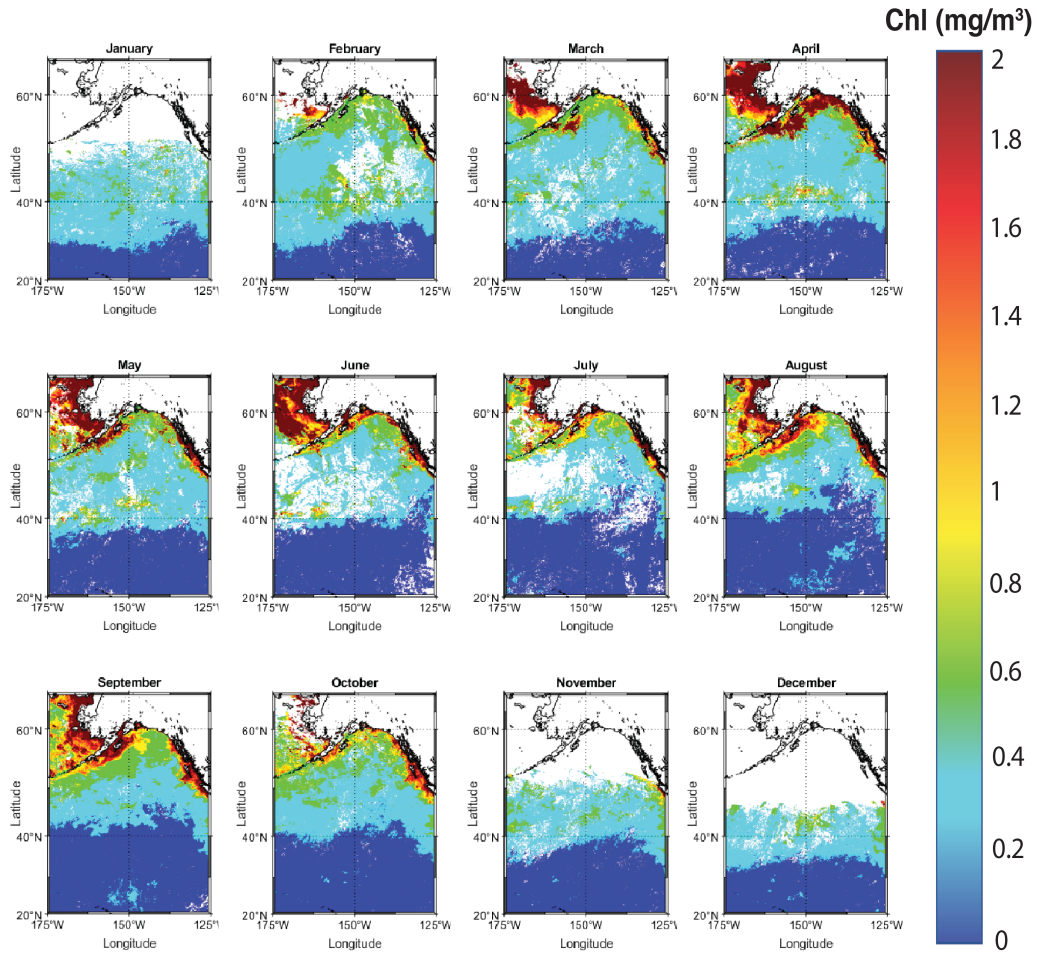


# 1 SI Appendix

2023-0403 Supp Fig 1.jpg

4/6/23, 4:48 PM

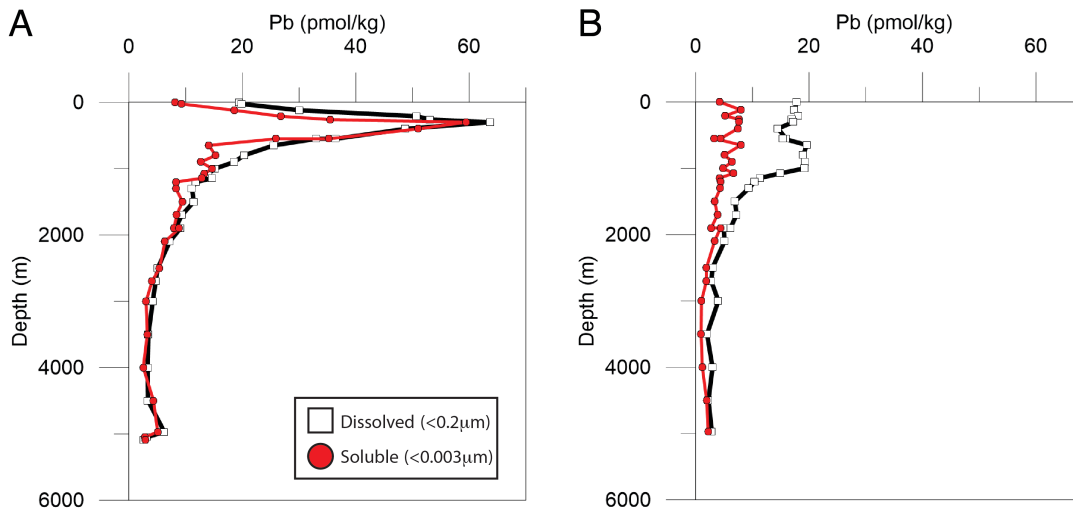


<https://drive.google.com/file/d/1PKJVcsCh8peoliMxC6xdyetMxO9hj69w/view>

Page 1 of 1

2  
3 SI Appendix Figure S1. Surface chlorophyll data from the NASA Aqua MODIS satellite for all  
4 months in 2018, showing the seasonal migration of the Transition Zone Chlorophyll Front  
5 (TZCF).

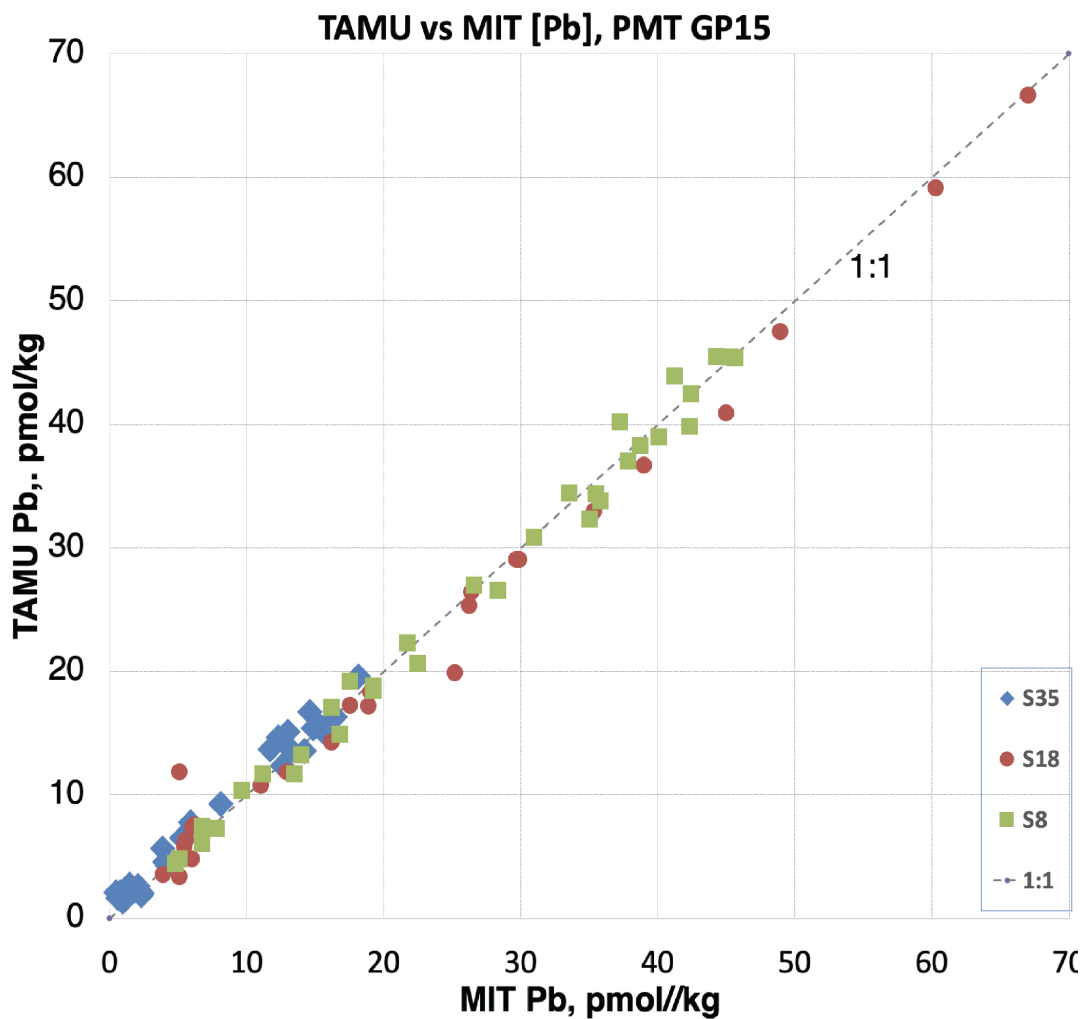
<b>Symbol</b>	<b>Description</b>
<b>S</b>	estimated particle Sinking rate ( $\text{m sec}^{-1}$ )
<b><math>K_H</math></b>	Horizontal eddy diffusion
<b><math>[\text{dPb}]_{1000}</math></b>	dissolved lead concentration at the top of the veil box ( $\text{pmol m}^{-3}$ )
<b><math>[\text{pPb}]_{1000}</math></b>	particulate lead concentration at the top of the veil box ( $\text{pmol m}^{-3}$ )
<b><math>P_{\text{tot}}</math></b>	total particulate concentration at the top of the veil box ( $\text{g m}^{-3}$ )
<b>w</b>	width of the box (latitudinal) (m)
<b>l</b>	length of the box (longitudinal) (m)
<b>h</b>	height of the box (vertical) (m)
<b><math>[\text{dPb}]_{\text{outside}}</math></b>	dissolved Pb concentration in the deep ocean outside of the veil box ( $\text{pmol m}^{-3}$ )
<b><math>K_D</math></b>	dimensionless adsorption distribution coefficient of dissolved and particulate Pb (pmol Pb per gram of particulates/pmol Pb per gram of solution)
<b><math>[\text{dPb}]</math></b>	dissolved Pb concentration within the bottom of the veil box ( $\text{pmol kg}^{-1}$ )
<b><math>[\text{pPb}]</math></b>	particulate Pb concentration within the bottom of the veil box ( $\text{pmol kg}^{-1}$ )



9

10 SI Appendix Figure S2. Depth profiles of dissolved (<math><0.2\mu\text{m}</math>; squares) and soluble  
11 (<math><0.003\mu\text{m}</math>~10kDa; circles) Pb concentrations at GEOTRACES GP15 station 19 (A) outside of a  
12 particle veil and station 29 (B) at the Equatorial particle veil.

13



15  
 16 SI Appendix Figure S3. Comparison of dissolved Pb (dPb) concentrations measured at TAMU  
 17 and MIT from GP15 Station 8 in green (S8), Station 18 in red (S18), and Station 35 in blue (S35).  
 18 These are the only stations shown because dPb was only measured at MIT at those three stations  
 19 for intercomparison.

## Data

GP15								Small Particulate			Small Particulate	
Statio	GT#	GT#		Longitude	Dissolved Pb		Leachable SPM	Total PIC	Leachable pPb			
n	GT# (dPb)	(dPb Isotopes)	(Particles)	Depth (m)	Latitude (N)	(W)	(pmol/kg)	206Pb/207Pb	208Pb/206Pb	(ug/L)	(nmol/kg)	(pmol/kg)
1	12430	12430		0	56	156.9622	3.356	1.1524	2.1688			
1	12441	12442	12451	20	56	156.9622	3.412	1.1856	2.0672	235.99	8.61	
1	12439			30	56	156.9622	11.661					
1	12437	12438	12452	40	56	156.9622	3.824	1.1887	2.0613	81.24	27.04	5.51
1	12435	12436		50	56	156.9622	5.254	1.1694	2.1248			
1	12433	12434	12453	70	56	156.9622	4.434	1.1737	2.1246	74.58	27.49	6.16
1	12431	12432	12454	85	56	156.9622	4.851	1.1752	2.1196	109.99	32.91	6.68
2	12455	12455		0	56	156.3473	8.174	1.17	2.0936			
2	12469	12470		44	56	156.3473	12.795	1.1737	2.0897			
2	12467	12468		65	56	156.3473	16.218	1.1654	2.1027			
2	12465			100	56	156.3473	22.181					
2	12463	12464		150	56	156.3473	30.58	1.1671	2.0987			
2	12461	12462		190	56	156.3473	32.534	1.1799	2.082			
2	12459	12460		225	56	156.3473	32.404	1.1823	2.0789			
2	12457	12458		250	56	156.3473	27.599	1.1799	2.0822			
3	12556	12556		0	55	155.7202	16.615	1.1658	2.0991			
3	12508	12509	12523	30	55	155.7202	18.892	1.1599	2.1088	80.87	160.11	0.5
3	12506	12507		60	55	155.7202	23.985	1.1591	2.1151			
3	12504	12505	12524	100	55	155.7202	24.892	1.1602	2.1054	20.79	31.38	0.7
3	12502	12503		175	55	155.7202	40.661	1.161	2.1089			
3	12500	12501	12525	300	55	155.7202	43.122	1.1617	2.1085	13.06	29.65	0.22
3	12498		12526	500	55	155.7202	42.093			9.16	26.82	0.25
3	12496	12497		700	55	155.7202	29.884	1.1642	2.1015			
3	12494	12495	12527	800	55	155.7202	37.552	1.1649	2.0998	6.37	23.04	0.27
3	12492	12493	12528	1100	55	155.7202	29.884	1.1665	2.0947	6.71	14.9	0.31
3	12491	12491	12529	1400	55	155.7202	33.376	1.1701	2.0883	7.32	18.79	0.29
3	12488	12489	12530	1560	55	155.7202	25.865	1.171	2.0925	8.36	15.92	0.24
3	12486	12487		1595	55	155.7202	24.434	1.1703	2.0906			
4	12558	12558		0	55	155.1708	15.26	1.1673	2.0876			
4	12582	12583		20	55	155.1708	17.654	1.1661	2.0971			
4	12580		12597	30	55	155.1708	16.234			90.72	97.52	0.88
4	12578			40	55	155.1708	17.557					
4	12576			50	55	155.1708	24.161					
4	12574	12575		60	55	155.1708	28.477	1.1638	2.1026			
4	12572		12598	70	55	155.1708	29.982			28.17	32.62	0.53
4	12570	12571	12599	100	55	155.1708	39.168	1.163	2.1039	20.31	21.96	0.53
4	12568			145	55	155.1708	42.118					
4	12566	12567	12600	200	55	155.1708	46.071	1.1633	2.1038	18.34	27.61	0.31
4	12564			250	55	155.1708	48.396					
4	12562	12563		300	55	155.1708	46.511	1.1652	2.1017			
4	12560	12561	12601	400	55	155.1708	45.726	1.1662	2.0983	10.88	22.05	0.21

4	12640		400	55	155.1708	46.168						
4	12638		500	55	155.1708	43.95						
4	12636	12637	600	55	155.1708	41.667	1.1643	2.1034				
4	12634	12635	12602	800	55	155.1708	37.792	1.1657	2.1002	10.71	21.15	0.36
4	12632	12633	1000	55	155.1708	34.697	1.1661	2.1008				
4	12630	12631	12603	1200	55	155.1708	30.562	1.1713	2.0855	8.15	16.75	0.27
4	12628	12629	1400	55	155.1708	27.429	1.1674	2.117				
4	12626		12604	1600	55	155.1708	23.794				14.75	0.44
4	12624		1800	55	155.1708	20.26						
4	12622	12623	12691	2000	55	155.1708	18.73	1.1777	2.0746	10.17	12.06	0.39
4	12620		2250	55	155.1708	18.384						
4	12618		2500	55	155.1708	14.373						
4	12676		2500	55	155.1708	14.784						
4	12674		12692	2750	55	155.1708	10			12.96	10.59	0.44
4	12672		3000	55	155.1708	11.964						
4	12670		3250	55	155.1708	10.443						
4	12668	12669	12693	3600	55	155.1708	10.828	1.1812	2.0781	6.62	9.86	0.31
4	12666		4000	55	155.1708	7.729						
4	12664	12665	12694	4500	55	155.1708	6	1.1798	2.0834	9.4	7.94	
4	12662		12695	5000	55	155.1708	5.926			11.88	4.37	0.69
4	12660	12661	12696	5290	55	155.1708	5.678	1.1817	2.0788	11.31	3.53	0.88
4	12658	12659	12697	5490	55	155.1708	8.945	1.1939	2.0493	14.49	2.55	0.64
4	12656	12657	12698	5540	55	155.1708	5.762	1.1909	2.0708	20.31	2.76	0.76
4	12654		5570	55	155.1708	4.497						
5	12322		0	54	153.7965	17.101						
5	12346		12361	25	54	153.7965	33.762			122.79	185.25	0.92
5	12344		12362	40	54	153.7965	19.874			83.85	233.41	0.59
5	12342		55	54	153.7965	27.667						
5	12340		12363	70	54	153.7965	28.105			24.46	39.83	0.57
5	12338		12364	90	54	153.7965	31.48			14.05	27.36	0.75
5	12336		120	54	153.7965	43.073						
5	12334		12365	140	54	153.7965	43.492				49.09	
5	12332		12366	300	54	153.7965	49.199			13.04	37.98	0.22
5	12330		12367	450	54	153.7965	43.242			6.11	20.26	0.01
5	12328		600	54	153.7965	42.336						
5	12326		12368	800	54	153.7965	35			7.12	21.44	0.31
5	12324		12407	1000	54	153.7965	35.89			7.14	18.26	0.48
5	12404		1000	54	153.7965	32.584						
5	12402		1250	54	153.7965	30.19						
5	12400		12408	1500	54	153.7965	24.48			4.84	17.5	0.24
5	12398		1750	54	153.7965	21.618						
5	12396		2000	54	153.7965	18.654						
5	12394		12409	2500	54	153.7965	15.974			5.17	15.69	0
5	12392		3000	54	153.7965	12.892						
5	12390		12410	3500	54	153.7965	9.124			5.84	8.49	0.25
5	12388		12411	4150	54	153.7965	8.265			7.47	9.01	0.55
5	12386		12412	4350	54	153.7965	7.897					

5	12384		12413	4500	54	153.7965	5.253			15.77	6.44	0.83
5	12382		12414	4575	54	153.7965	5.338			20.98	7.51	1.48
5.5	12704			0	53	153.3521	17.45					
6	12714	12714		0	52	152.0003	18	1.1671	2.088			
6	12751	12751		25	52	152.0003	22.549	1.1614	2.1125			
6	12748	12749	12706	40	52	152.0003	21.251	1.1652	2.0917	132.63	148.22	0.69
6	12746	12747	12707	60	52	152.0003	26.46	1.1612	2.1064	31.38	193.95	0.59
6	12744	12745		90	52	152.0003	28.094	1.16	2.1118			
6	12742	12743	12708	120	52	152.0003	33.213	1.1692	2.0818			
6	12740	12741		150	52	152.0003	39.49	1.1581	2.1102			
6	12738	12739	12709	250	52	152.0003	39.107	1.1643	2.0994	10.69	23.49	0.31
6	12736	12737	12710	350	52	152.0003	43.395	1.1606	2.1129	9.45	16.75	0.26
6	12734	12735		440	52	152.0003	44.537	1.1586	2.1107			
6	12732	12733	12711	550	52	152.0003	43.373	1.1637	2.1024	6.49	18.11	0.21
6	12730	12731	12712	750	52	152.0003	40.445	1.1603	2.1187	7.33	28.32	0.28
6	12728	12789	12713	1000	52	152.0003	36.031	1.1606	2.1074	7.88	33.4	0.35
6	12788	12729		1000	52	152.0003	31.969	1.1666	2.0969			
6	12786	12787		1250	52	152.0003	28.149	1.1603	2.1085			
6	12784	12785	12791	1500	52	152.0003	26.6	1.1626	2.1057	6.88	24.95	
6	12782	12783		1750	52	152.0003	23.624	1.1658	2.1011			
6	12780	12781	12792	2000	52	152.0003	21.083	1.1641	2.1052	6.01	19.32	0.27
6	12778	12779		2200	52	152.0003	19.911	1.1644	2.1049			
6	12776	12777	12793	2500	52	152.0003	14.489	1.1685	2.0981	5.1	20.78	0.19
6	12774	12775	12794	3000	52	152.0003	11.981	1.173	2.0909	5.07	24.74	0.25
6	12772	12773	12795	3500	52	152.0003	8.57	1.1716	2.0957	4.59	20.11	0.16
6	12770	12771	12796	4000	52	152.0003	8.133	1.1774	2.0869	4.7	14.34	0
6	12768	12769	12797	4500	52	152.0003	5.43	1.1783	2.0827	4.49	10.54	0.23
6	12766	12767	12798	5065	52	152.0003	6.044	1.1756	2.0766	8.85	10.36	0.4
7	12852			20	50	151.9997	22.689					
7	12850			35	50	151.9997	22.254					
7	12848			45	50	151.9997	26.405					
7	12846			60	50	151.9997	29.191					
7	12844			70	50	151.9997	27.848					
7	12842			90	50	151.9997	27.743					
7	12840			150	50	151.9997	35.462					
7	12838			250	50	151.9997	34.6					
7	12836			400	50	151.9997	38.988					
7	12834			550	50	151.9997	40.217					
7	12832			750	50	151.9997	37.324					
7	12830			1000	50	151.9997	34.779					
8	12905	12905		0	47	151.9996	18.378	1.1623	2.1034			
8	12902	12903	12873	28	47	151.9996	21.688	1.1628	2.1012	154.05	456.72	2.56
8	12899	12900	12874	45	47	151.9996	26.724	1.1617	2.1033	147.58	580.84	2.36
8	12896	12897	12875	65	47	151.9996	32.428	1.1652	2.0984	41.53	80.61	0.35
8	12893	12894	12876	90	47	151.9996	31.618	1.1628	2.1017	27.2	31.52	0.31
8	12890	12891		115	47	151.9996	33.786	1.1618	2.1035			
8	12887	12888	12877	149	47	151.9996	38.275	1.1616	2.1047	27.64	41.67	0.66

8	12884	12885	12878	200	47	151.9996	43.819	1.1632	2.1026	20.41	38.38	0.54
8	13017	13018	12879	300	47	151.9996	41.775	1.1619	2.1056	10.46	25.37	0.2
8	12881	12882	12880	400	47	151.9996	43.729	1.1621	2.1056	11.68	30.79	0.23
8	13014	13015	12940	500	47	151.9996	41.648	1.1627	2.1055	8.01	22.08	0.31
8	13011	13012	12941	600	47	151.9996	40.431	1.1617	2.107		27.43	
8	13008	13009		700	47	151.9996	40.76	1.163	2.1052			
8	13005	13006	12942	800	47	151.9996	39.1	1.1631	2.1052	6.33	21.68	0.16
8	13002	13003		900	47	151.9996	37.297	1.1636	2.1046			
8	12999	13000	12943	1000	47	151.9996	36.301	1.165	2.1022	5.89	15.96	0.17
8	12984	12967		1100	47	151.9996	33.477	1.1695	2.0859			
8	12981	12982	12944	1300	47	151.9996	30.251	1.1645	2.1054	6.22	18.07	0.14
8	12978	12979		1500	47	151.9996	26.026	1.1658	2.1032			
8	12975	12976	12945	1700	47	151.9996	20.637	1.1694	2.0967	5.51	17.73	0.11
8	12996		12946	1900	47	151.9996	18.244			5.66	19.17	0.09
8	12972	12997	12988	1900	47	151.9996	18.738	1.1694	2.0982		14.36	
8	12969	12970		2100	47	151.9996	16.685	1.1718	2.0945			
8	12966	12967	12989	2300	47	151.9996	14.407	1.1737	2.0917	5.24	17.91	0.13
8	12963	12964		2500	47	151.9996	13.624	1.1742	2.0918			
8	12935	12936		2750	47	151.9996	12.845	1.1764	2.0876			
8	12932	12933	12990	3000	47	151.9996	11.355	1.1755	2.0911	4.45	16.34	0.07
8	12929	12930		3500	47	151.9996	10.193	1.1754	2.0919			
8	12926	12927	12991	4000	47	151.9996	7.444	1.1742	2.0918	4.32	18.39	0.17
8	12923	12924	12992	4500	47	151.9996	4.92	1.1778	2.0875	5.28	12.38	0.32
8	12920	12921	12993	5000	47	151.9996	4.697	1.1774	2.0885	4.43	6.03	0.43
8	12917	12918	12994	5050	47	151.9996	5.893	1.1808	2.0801	4.56	7.43	0.23
8	12914	12915	12995	5090	47	151.9996	7.428	1.1801	2.0814	5.02	8.76	0.49
8.5	13032			0	46	152	20.661					
9	13033			0	45	151.9999	19.617					
9	13070			25	45	151.9999	20.633					
9	13068			43	45	151.9999	23.696					
9	13066			55	45	151.9999	27.187					
9	13064			70	45	151.9999	32.515					
9	13062			90	45	151.9999	34.803					
9	13060			110	45	151.9999	33.681					
9	13058			150	45	151.9999	49.92					
9	13056			250	45	151.9999	52.253					
9	13054			350	45	151.9999	47.971					
9	13052			500	45	151.9999	44.054					
9	13050			750	45	151.9999	42.862					
9	13048			1000	45	151.9999	40.046					
10	13076			0	42	152	26.566					
10	13100			25	42	152	27.613					
10	13098		13115	40	42	152	28.202			43.56	114.5	0.62
10	13096		13116	60	42	152	30.864			74.66	179.81	1.43
10	13094		13117	80	42	152	36.924			49.86	168.27	0.89
10	13092	13093		100	42	152	39.027	1.1602	2.131			
10	13090	13091	13118	150	42	152	49.885	1.1609	2.1207	14.01	102.56	0.93



10	13088	13089	13119	225	42	152	54.921	1.1661	2.1559	15.04	89.23	0.76
10	13086	13087		300	42	152	55.035	1.16	2.1097			
10	13084	13085	13120	400	42	152	54.267	1.1604	2.1213	14.82	100.5	0.53
10	13082	13083	13121	600	42	152	47.76	1.1619	2.1181	7.82	50.17	0.27
10	13080	13081		800	42	152	46.5	1.1621	2.1168			
10	13078	13079	13122	1000	42	152	43.612	1.1622	2.1169	5	38.07	0.19
10	13157	13159		1000	42	152	41.908	1.1632	2.1143			
10	13155	13158	13162	1240	42	152	34.3	1.1639	2.1165	4.91	37.11	0.17
10	13153	13156		1500	42	152	28.372	1.1648	2.1052			
10	13151	13154	13163	1750	42	152	21.32	1.1675	2.1002			
10	13149	13152		2000	42	152	17.921	1.1665	2.1014			
10	13147	13150	13164	2250	42	152	13.214	1.1645	2.1045			
10	13145	13146	13165	2750	42	152	12.506	1.1655	2.1025	4.41	36.15	0.11
10	13143	13144	13166	3500	42	152	9.84	1.162	2.1048	5.27	35.37	0.06
10	13141	13142		4250	42	152	6.228	1.1557	2.1121			
10	13139	13140	13167	4900	42	152	5.638	1.1659	2.0945	14.33	10.32	0.29
10	13137	13138	13168	5015	42	152	6	1.1603	2.103	14.85	10.75	0.51
10	13135		13169	5055	42	152	6			12.34	11.27	0.61
10.5	13186			0	40	152	25.369					
11.5	13235			0	38	152	38.663					
12	13236	13236		0	37	152.0001	43.959	1.161	2.1078			
12	13189	13190	13227	25	37	152.0001	42.304	1.1609	2.1062	20.15	21.46	0.25
12	13211	13212	13305	40	37	152.0001	41.699	1.1621	2.1062	22.3	24.86	0.24
12	13209	13210	13228	60	37	152.0001	42.66	1.1615	2.1069		79.31	
12	13207	13208		75	37	152.0001	44.126	1.1616	2.1063			
12	13205	13206	13229	85	37	152.0001	42.567	1.1625	2.1053		47.07	
12	13203	13204		95	37	152.0001	42.619	1.1589	2.1092			
12	13201	13202	13230	105	37	152.0001	44.456	1.1613	2.1069	24.08	66.05	0.34
12	13199	13200		140	37	152.0001	51	1.1615	2.1076			
12	13197	13198	13231	180	37	152.0001	57.164	1.1612	2.1087	10.67	63.57	0.4
12	13195	13196		250	37	152.0001	61.616	1.1653	2.0999			
12	13193	13194		325	37	152.0001	61.563	1.1611	2.1081			
12	13191	13192	13232	425	37	152.0001	60.473	1.1608	2.108	12.8	100.87	0.38
12	13335	13336		425	37	152.0001	58.421	1.1609	2.1087			
12	13333	13334		500	37	152.0001	54.361	1.1604	2.109			
12	13331	13332	13233	600	37	152.0001	50.395	1.1608	2.1101	9.9	68.71	0.24
12	13329	13330		700	37	152.0001	51.885	1.1607	2.1092			
12	13327	13328		800	37	152.0001	47.895	1.1626	2.1067			
12	13325	13326		900	37	152.0001	44.925	1.1627	2.1058			
12	13323	13324	13234	1100	37	152.0001	35.707	1.1647	2.1038	6.05	49.16	0.12
12	13321	13322		1300	37	152.0001	28.175	1.1669	2.1022			
12	13319	13320		1500	37	152.0001	21.53	1.1661	2.1022			
12	13317	13318		1700	37	152.0001	16.614	1.1658	2.1003			
12	13315	13316	13306	1900	37	152.0001	14.813	1.1753	2.0912	5.76	44.56	0.09
12	13313	13314		2100	37	152.0001	14.299	1.172	2.0952			
12	13285	13286		2100	37	152.0001	14.274	1.172	2.0973			
12	13283	13284		2300	37	152.0001	12.477	1.1748	2.0945			

12	13281	13282		2500	37	152.0001	11.916	1.1667	2.1044			
12	13279	13280	13307	2750	37	152.0001	11.646	1.1669	2.1088	5.13	41.84	0.09
12	13277	13278		3000	37	152.0001	10.287	1.1715	2.1022			
12	13275		13308	3500	37	152.0001	9.934			4.31	33.67	0.05
12	13273	13274		4000	37	152.0001	7.037	1.1651	2.1027			
12	13271		13309	4500	37	152.0001	6.311			2.63	20.65	0.05
12	13269			5000	37	152.0001	7.681					
12	13267		13310	5425	37	152.0001	7.508			3.39	5.15	0.15
12	13265		13311	5505	37	152.0001	5.258			1.93	4.12	0.13
12	13263		13312	5545	37	152.0001	8.796			3.03	3.94	0.17
12.5	13349			0	36	152	41.418					
13	13374			0	34	152.0017	46.051					
13	13372			25	34	152.0017	47.517					
13	13370			50	34	152.0017	46.678					
13	13368			75	34	152.0017	46.939					
13	13366			100	34	152.0017	49.012					
13	13364			125	34	152.0017	55.304					
13	13362			150	34	152.0017	58.681					
13	13360			250	34	152.0017	62.869					
13	13358			350	34	152.0017	71.177					
13	13356			500	34	152.0017	63.484					
13	13354			650	34	152.0017	59.584					
13	13352			800	34	152.0017	50.061					
13	13350			1000	34	152.0017	38.765					
13.5	13401			0	33	152	38.414					
14	13414	13414		0	32	151.9999	37.566	1.1628	2.1048			
14	13437		13393	25	32	151.9999	40.585			18.67	28.49	0.52
14	13434	13435	13394	45	32	151.9999	45.112	1.1679	2.0987	24.29	27.71	0.56
14	13431	13432	13395	75	32	151.9999	45.06	1.1637	2.1035	20.18	24.23	0.62
14	13428	13429	13396	100	32	151.9999	46.739	1.1629	2.1048	13.79	23.62	0.42
14	13425	13426	13397	125	32	151.9999	51.3	1.163	2.1048	10.65	21.49	0.26
14	13422	13423	13398	150	32	151.9999	58.24	1.1624	2.1056	8.64	33.71	0.21
14	13419			200	32	151.9999	55.955					
14	13416	13417	13399	300	32	151.9999	60.384	1.1603	2.107	7.07	40.03	0.37
14	13528	13529		400	32	151.9999	64.321	1.1617	2.1074			
14	13525	13526	13400	500	32	151.9999	58.183	1.1607	2.1092	8.16	61.14	0.42
14	13522	13523	13479	600	32	151.9999	53.664	1.162	2.1061	9.07	64.55	
14	13519	13520		700	32	151.9999	50.828	1.1619	2.1065			
14	13516	13517	13480	800	32	151.9999	45.239	1.1634	2.1037	5.86	46.1	0.14
14	13513	13514		900	32	151.9999	40.466	1.1645	2.1022			
14	13510	13511	13481	1000	32	151.9999	32.093	1.1689	2.0961	4.47	33.9	0.1
14	13507	13508		1100	32	151.9999	29.061	1.1698	2.0957			
14	13569		13482	1200	32	151.9999	22.815			3.59	27.7	0.08
14	13566	13567		1300	32	151.9999	20.788	1.1744	2.09			
14	13563	13564	13483	1500	32	151.9999	15.103	1.1737	2.0907	3.98	24.61	0.06
14	13560	13561	13484	1700	32	151.9999	13.591	1.1734	2.0918	3.84	29.26	0.06
14	13557	13558	13485	1900	32	151.9999	13.454	1.1777	2.0862	3.43	28.37	0.03

14	13554	13555		2100	32	151.9999	9.565	1.1794	2.0837			
14	13551	13552	13500	2300	32	151.9999	9.139	1.1812	2.0794	2.57	19.98	0.12
14	13548	13549		2500	32	151.9999	9.061	1.175	2.0867			
14	13474	13475	13501	2750	32	151.9999	7.89	1.1819	2.0792	2.33	16.02	0.1
14	13471	13472		3000	32	151.9999	6.42	1.1781	2.0835			
14	13468	13469	13502	3500	32	151.9999	5.536	1.1827	2.0802	1.15	11.33	0.08
14	13465	13466		4000	32	151.9999	5.859	1.179	2.0842			
14	13462		13503	4500	32	151.9999	5.841			0.88	6.58	0.08
14	13459	13460	13504	5085	32	151.9999	5.237	1.1894	2.0541	1.1	3.38	0.14
14	13456	13457	13505	5165	32	151.9999	7.303	1.192	2.0653	1.1	5	0.12
14	13453		13506	5205	32	151.9999	5.527			0.99	3.85	0.13
15	13609			0	29	151.9997	30.348					
15	13607			25	29	151.9997	32.287					
15	13605			50	29	151.9997	31.85					
15	13603			75	29	151.9997	37.063					
15	13601			100	29	151.9997	37.785					
15	13599			125	29	151.9997	40.646					
15	13597			150	29	151.9997	43.748					
15	13595			250	29	151.9997	56.771					
15	13593			350	29	151.9997	63.586					
15	13591			550	29	151.9997	58.732					
15	13589			700	29	151.9997	49.212					
15	13587			900	29	151.9997	36.488					
15	13585			1000	29	151.9997	29.15					
16	13620	13620		0	27	152	26.66	1.161	2.1019			
16	13634	13635	13611	30	27	152	33	1.1648	2.0991	25.31	62.18	0.21
16	13656	13657	13612	65	27	152	36.179	1.163	2.1035	22.59	65.76	0.27
16	13654	13655	13696	110	27	152	39.015	1.1631	2.1035	3.25	38.04	0.42
16	13652	13653	13613	125	27	152	44.675	1.162	2.1044			
16	13650	13651	13614	150	27	152	45.75	1.161	2.1051	10.06	45.95	0.24
16	13648	13649	13615	200	27	152	54.778	1.161	2.108	6.23	27.83	0.23
16	13646	13647	13616	300	27	152	60.468	1.1611	2.1069	6.16	35	0.36
16	13644	13645		400	27	152	63.44	1.1606	2.1089			
16	13642	13643	13617	525	27	152	62.974	1.16	2.1102	6.15	39.26	0.29
16	13640	13641		600	27	152	52.714	1.1609	2.1083			
16	13638	13639		700	27	152	46.189	1.1634	2.1036			
16	13636	13637	13618	850	27	152	33.478	1.1657	2.1004	4.05	23.31	0.25
16	13693			850	27	152	34.706					
16	13691	13692		1000	27	152	24.505	1.1671	2.0984			
16	13689	13690	13697	1250	27	152	15.365	1.1695	2.0967	2.33	21.99	0.16
16	13687	13688		1750	27	152	10.69	1.1721	2.0941			
16	13685	13686	13698	2250	27	152	7.868	1.1742	2.0894	2.54	14.24	0.1
16	13683	13684		2500	27	152	7.19	1.1709	2.0962			
16	13681	13682	13699	3000	27	152	7.593	1.1754	2.0904	1.65	12.84	0.07
16	13679	13680	13700	4000	27	152	4.363	1.177	2.0865		7.3	
16	13677	13678		5000	27	152	4.217	1.1786	2.0811			
16	13675		13701	5205	27	152	4.616			1.16	4.07	0.18

16	13673	13674	13702	5285	27	152	3.115	1.1811	2.0803	1.69	3.25	0
16	13671		13703	5325	27	152	4.498			2.04	4.1	0.17
16.5	13769			0	26	152	17.075					
17	13721			0	24	152.0004	20.139					
17	13745			40	24	152.0004	25.561					
17	13743			81	24	152.0004	29.364					
17	13741			95	24	152.0004	31.613					
17	13739			111	24	152.0004	32.686					
17	13737			135	24	152.0004	34.713					
17	13735			200	24	152.0004	43					
17	13733			300	24	152.0004	61.794					
17	13731			400	24	152.0004	62.566					
17	13729			500	24	152.0004	53.637					
17	13727			600	24	152.0004	49.435					
17	13725			750	24	152.0004	36.288					
17	13723			1000	24	152.0004	22.243					
17.5	13720			0	25	152	26.337					
18	13782	13782		0	22	152.0004	18.335	1.1663	2.0986			
18	13806	13807	13761	40	22	152.0004	19.875	1.1673	2.0976	21.13	20.98	0.3
18	13804	13805	13762	80	22	152.0004	26.404	1.1643	2.1023	18.67	17.87	0.41
18	13802	13803	13763	110	22	152.0004	29.071	1.1631	2.1041	12.65	21.87	0.33
18	13800	13801		130	22	152.0004	29.06	1.1644	2.1016			
18	13798	13799	13764	150	22	152.0004	36.643	1.1647	2.1012	11.94	55.71	0.86
18	13796	13797		250	22	152.0004	47.476	1.1597	2.1094			
18	13794	13795	13765	300	22	152.0004	66.641	1.1614	2.1107	5.87	33.59	0.57
18	13792	13793	13766	450	22	152.0004	59.14	1.1596	2.1106	5.18	32.34	0.51
18	13790	13791		600	22	152.0004	40.932	1.1636	2.1037			
18	13788	13789	13767	700	22	152.0004	32.936	1.1662	2.0997	3.47	20.98	0.43
18	13786	13787		850	22	152.0004	25.32	1.1696	2.0949			
18	13784	13785	13768	1000	22	152.0004	17.173	1.1713	2.0931	3.43	18.12	0.21
18	13843	13844		1000	22	152.0004	17.236	1.1714	2.094			
18	13841	13842	13858	1100	22	152.0004	14.235	1.1729	2.0917	3.65	18.46	0.33
18	13839	13840		1250	22	152.0004	11.869	1.1731	2.0927			
18	13837	13838	13859	1750	22	152.0004	10.756	1.1804	2.0813	2.79	12.36	0
18	13835	13836	13860	2250	22	152.0004	7.3	1.1793	2.0861	2.6	11.23	0
18	13833	13834	13862	2750	22	152.0004	7.577	1.181	2.0838			0
18	13831	13832	13863	3250	22	152.0004	4.803	1.183	2.0796			0
18	13829	13830	13861	3750	22	152.0004	5.816	1.1804	2.0846			0
18	13827	13828	13864	4250	22	152.0004	6.319	1.1806	2.0841			0
18	13825	13826	13865	4750	22	152.0004	11.843	1.1831	2.0748			0
18	13823	13824		5095	22	152.0004	3.521	1.1855	2.0726			
18	13821	13822		5135	22	152.0004	3.028	1.1806	2.0846			
18.3	13915			25	20	154.513	19.26					
18.3	13913			100	20	154.513	27.435					
18.3	13911			300	20	154.513	58.663					
18.3	13909		13885	500	20	154.513	35.435			6.26	28.61	1.64
18.3	13907			800	20	154.513	20.53					

18.3	13905		13886	1100	20	154.513	16.3			5.67	17.79	0.78
18.3	13903		13887	1300	20	154.513	12.95			4.49	19.62	0.51
18.3	13901		13888	1600	20	154.513	9.778					
18.3	13899		13889	1920	20	154.513	8.705			4.01	13.96	0.46
18.3	13897		13890	2040	20	154.513	8.634			3.55	12.67	0.37
18.3	13895		13891	2100	20	154.513	8.684			4.02	12.74	0.41
18.3	13893		13892	2130	20	154.513	8.663			3.73	12.79	0.32
18.6	13931			100	19	155.258	21.734					
18.6	13929			630	19	155.258	27.14					
18.6	13927			850	19	155.258	19.056					
18.6	13925			1000	19	155.258	16.186					
18.6	13923			1100	19	155.258	11.457					
18.6	13921			1200	19	155.258	11.345					
18.6	13919			1250	19	155.258	15.295					
18.6	13917			1290	19	155.258	11.323					
19	13963	13963		0	18	152.0003	19.456	1.169	2.0949			
19	13987	13988	13943	25	18	152.0003	19.911	1.1723	2.0913	17.44	31.33	0.17
19	13985	13986	13944	55	18	152.0003	23.201	1.1747	2.0858	18.51	20.52	0
19	13983	13984		80	18	152.0003	26.563	1.1731	2.0877			
19	13981	13982	13945	110	18	152.0003	28.056	1.1732	2.0884	14.12	23.97	0.93
19	13979	13980		120	18	152.0003	30.064	1.1711	2.0917			
19	13977	13978		160	18	152.0003	37.806	1.1682	2.0964			
19	13975	13976		210	18	152.0003	50.773	1.1666	2.0989			
19	13973	13974	13946	260	18	152.0003	53.089	1.1662	2.1002	5.74	27.45	0.79
19	13971	13972		300	18	152.0003	63.736	1.1607	2.1089			
19	13969	13970		350	18	152.0003	59.801	1.1612	2.1071			
19	13967	13968	13947	400	18	152.0003	48.737	1.1616	2.1057	4.77	29.63	0.27
19	13965	13966	13948	550	18	152.0003	36.449	1.1667	2.0965	3.65	22.5	0.25
19	14085	14086		550	18	152.0003	33.079	1.1659	2.0983			
19	14083	14084		650	18	152.0003	25.558	1.1665	2.0981			
19	14081	14082	13949	800	18	152.0003	20.296	1.169	2.096	3.92	18.59	0.23
19	14079	14080		900	18	152.0003	18.58	1.1711	2.0923			
19	14077	14078		1000	18	152.0003	15.187	1.1683	2.0958			
19	14075	14076	13950	1075	18	152.0003	13.982	1.1738	2.0895	3.24	16.87	0.09
19	14073	14074		1145	18	152.0003	14.708	1.1762	2.0857			
19	14071	14072		1200	18	152.0003	11.817	1.1742	2.0905			
19	14069	14070		1300	18	152.0003	11.106	1.1758	2.0876			
19	14067	14068	14015	1500	18	152.0003	11.448	1.1798	2.0819	2.6	10.09	
19	14065	14066		1700	18	152.0003	9.339	1.1767	2.0857			
19	14063	14064		1900	18	152.0003	8.212	1.1798	2.0821			
19	14045	14064		1900	18	152.0003	9.058	1.1795	2.0833			
19	14043	14044	14016	2100	18	152.0003	7.203	1.1817	2.0808	2.21	9.45	
19	14041	14042		2300	18	152.0003	6.183	1.1809	2.0831			
19	14039	14040		2500	18	152.0003	5.081	1.1813	2.0833			
19	14037	14038	14017	2700	18	152.0003	4.722	1.1828	2.0806	1.88	9.46	0.25
19	14035	14036		3000	18	152.0003	4.201	1.1818	2.0809			
19	14033	14034	14018	3500	18	152.0003	3.436	1.1838	2.0789	1.77	8.62	0.07

19	14031	14032		4000	18	152.0003	3.307	1.181	2.0798			
19	14029	14030	14019	4500	18	152.0003	3.373	1.1822	2.0789	1.78	6.07	0.21
19	14027	14028	14020	4970	18	152.0003	6.243	1.1822	2.0797	2.26	4.76	0.24
19	14025	14026	14021	5050	18	152.0003	3.205	1.189	2.0666	2.23	4.56	0.24
19	14023	14024	14022	5090	18	152.0003	2.641	1.1853	2.0759	2.2	5.47	0.11
19.5	14087			0	16	152	24.252					
20	14101			0	14	152.0002	18.397					
20	14125			20	14	152.0002	22.42					
20	14123			60	14	152.0002	26.31					
20	14121			80	14	152.0002	30.335					
20	14119			100	14	152.0002	40.279					
20	14117			120	14	152.0002	47.288					
20	14115			150	14	152.0002	39.878					
20	14113			200	14	152.0002	31.57					
20	14111			260	14	152.0002	30.985					
20	14109			350	14	152.0002	25.873					
20	14107			500	14	152.0002	20.931					
20	14105			750	14	152.0002	16.726					
20	14103			1000	14	152.0002	14.426					
21	14137	14137		0	11	152.0004	16.587	1.1669	2.0993			
21	14161	14162	14129	20	11	152.0004	20.096	1.1687	2.0952	17.8	34.06	0.26
21	14159	14160	14130	45	11	152.0004	30.714	1.1623	2.1062	26.56	56.66	0.5
21	14157	14158		60	11	152.0004	37.348	1.1633	2.1042			
21	14155	14156		80	11	152.0004	40.242	1.1623	2.1065			
21	14153	14154	14131	100	11	152.0004	35.199	1.1631	2.1049	10.44	13.49	0.07
21	14151	14152		125	11	152.0004	28.94	1.1651	2.0998			
21	14149	14150	14132	150	11	152.0004	26.45	1.1651	2.099	5.23	12.83	0.06
21	14147	14148		175	11	152.0004	25.765	1.1659	2.0977			
21	14145	14146		200	11	152.0004	26.067	1.1676	2.0949			
21	14143	14144	14133	250	11	152.0004	24.527	1.1671	2.0953	6.57	27.53	0.11
21	14141	14142		300	11	152.0004	23.738	1.1657	2.0965			
21	14139	14140	14134	400	11	152.0004	22.96	1.1688	2.0927	5.5	25.58	0.18
21	14261	14262		400	11	152.0004	25.194	1.1695	2.0917			
21	14259	14260		500	11	152.0004	22.274	1.1705	2.0909			
21	14257	14258	14135	600	11	152.0004	18.196	1.1712	2.0903	4.96	24.15	0.11
21	14255	14256		700	11	152.0004	17.146	1.1725	2.0887			
21	14253	14254		800	11	152.0004	13.803	1.175	2.0853			
21	14251	14252	14136	900	11	152.0004	13.066	1.1725	2.0903	3.81	20.09	0.08
21	14249	14250		1000	11	152.0004	12.105	1.1747	2.087			
21	14247	14248		1200	11	152.0004	10.337	1.1753	2.087			
21	14245	14246	14231	1400	11	152.0004	8.096	1.1782	2.0839	3.13	18.28	0.11
21	14243	14244		1600	11	152.0004	7.627	1.1868	2.0709			
21	14241			1800	11	152.0004	7.895					
21	14239	14240	14232	2000	11	152.0004	7.087	1.1837	2.0772	2.86	16.15	0.06
21	14211	14212		2000	11	152.0004	6.285	1.1843	2.0777			
21	14209	14210		2250	11	152.0004	5.401	1.1834	2.0772			
21	14207	14208	14233	2500	11	152.0004	4.523	1.1851	2.0728	2.68	13.99	0.07

21	14205	14206		2750	11	152.0004	3.252	1.186	2.0694			
21	14203	14204		3000	11	152.0004	3.006	1.1875	2.0687			
21	14201	14202	14234	3250	11	152.0004	2.89	1.1859	2.0718	1.86	12.78	0.06
21	14199	14200		3750	11	152.0004	2.961	1.1894	2.0666			
21	14197	14198	14235	4250	11	152.0004	4.114	1.1862	2.0717	1.15	8.52	0.06
21	14195			4750	11	152.0004	2.119					
21	14193	14194	14236	5218	11	152.0004	3.537	1.1886	2.0697	1.74	4.96	0.23
21	14191	14192	14237	5298	11	152.0004	2.555	1.1895	2.0693	1.57	4.54	0.26
21	14189	14190	14238	5338	11	152.0004	2.892	1.1876	2.0728	1.91	5.6	0.26
21.5	14127			0	13	152	16.94					
22	14275			0	9	151.9965	16.135					
22	14311			20	9	151.9965	16.971					
22	14309			60	9	151.9965	37.315					
22	14307			80	9	151.9965	42.938					
22	14305			100	9	151.9965	37.825					
22	14303			120	9	151.9965	30.567					
22	14301			150	9	151.9965	27.527					
22	14299			200	9	151.9965	25.366					
22	14297			260	9	151.9965	30.507					
22	14295			350	9	151.9965	24.055					
22	14293			500	9	151.9965	19.77					
22	14291			750	9	151.9965	15.952					
22	14289			1000	9	151.9965	12.906					
23	14322			0	7	151.9919	13.32					
23	14357		14314	25	7	151.9919	18.467			14.69	22.34	0.09
23	14354			60	7	151.9919	17.7					
23	14351		14315	80	7	151.9919	21.732			19.91	25.01	0.39
23	14348		14316	100	7	151.9919	29.312			12.46	23.08	0.21
23	14345			130	7	151.9919	39.699					
23	14342		14317	160	7	151.9919	37.864			6.59	19.43	0.12
23	14339		14318	200	7	151.9919	29.755			5.83	23	0.17
23	14336		14319	300	7	151.9919	25.066			7.78	39.53	0.14
23	14472		14320	500	7	151.9919	19.361			5.4	27.8	0.14
23	14469			600	7	151.9919	18.225					
23	14466		14321	800	7	151.9919	13.708				19.22	
23	14463			1000	7	151.9919	10.953					
23	14460		14399	1250	7	151.9919	9.526			3.42	16.77	0
23	14457			1500	7	151.9919	8.192					
23	14454		14400	1750	7	151.9919	6.908			2.56	16.48	0.08
23	14451			2000	7	151.9919	4.853					
23	14427		14401	2150	7	151.9919	4.996			2.38	14.77	0.04
23	14424		14402	2300	7	151.9919	5.126			2	13.18	0.04
23	14421		14403	2450	7	151.9919	3.696			2.36	13	0.04
23	14418		14404	2600	7	151.9919	2.853			1.85	12.36	0.04
23	14415		14405	2750	7	151.9919	1.929			1.98	11.61	0.05
23	14412		14443	2900	7	151.9919	1.778			2.01	11.38	0.04
23	14409		14444	3100	7	151.9919	2.172			1.9	11.84	0.04

23	14406		14445	3300	7	151.9919	2.227		2.39	11.96	0.02	
23	14394		14446	3500	7	151.9919	2.935		1.78	11.41	0.04	
23	14391			3750	7	151.9919	2.505					
23	14388		14447	4000	7	151.9919	2.437		1.62	9	0.04	
23	14385		14448	4500	7	151.9919	2.071		2.13	8.6	0.08	
23	14382		14449	4750	7	151.9919	2.667		1.71	6.32	0.12	
23	14379		14450	5050	7	151.9919	2.902		1.41	5.97	0.17	
23	14376			5130	7	151.9919	2.78					
23	14373			5170	7	151.9919	2.737					
24	14487			0	6	152.0008	12.608					
25	14537			0	5	151.9959	13.524					
25	14535		14505	25	5	151.9959	16.139		18.06	22.05	0.13	
25	14533	14534		50	5	151.9959	16.513	1.1661	2.1007			
25	14531	14532	14506	80	5	151.9959	17.643	1.1629	2.1055	31.09	52.8	0.33
25	14529	14530		100	5	151.9959	18.067	1.1633	2.1034			
25	14527	14528	14507	125	5	151.9959	19.327	1.1643	2.0998	15.37	23.96	0.16
25	14525	14526		150	5	151.9959	32.195	1.1642	2.0988			
25	14523	14524	14508	200	5	151.9959	33.271	1.1651	2.0982	6.29	24.09	0.13
25	14521	14522		250	5	151.9959	25.37	1.17	2.0921			
25	14519	14520		300	5	151.9959	19.835	1.1865	2.0676			
25	14517	14518		350	5	151.9959	18.651	1.1756	2.0858			
25	14515	14516		400	5	151.9959	19.117	1.1665	2.0984			
25	14513	14514		450	5	151.9959	18.526	1.1661	2.0989			
25	14619	14618		450	5	151.9959	18.57	1.167	2.0947			
25	14617	14616	14509	500	5	151.9959	18.459	1.1687	2.0932	4.71	22.47	0.1
25	14615	14614		600	5	151.9959	16.682	1.1715	2.0889			
25	14613	14612		700	5	151.9959	15.16	1.1717	2.0891			
25	14611	14610	14510	800	5	151.9959	12.889	1.1699	2.0921	3.88	19.96	
25	14609	14608		900	5	151.9959	12.157	1.1746	2.0848			
25	14607	14606		1000	5	151.9959	12.161	1.1722	2.0903			
25	14605	14604		1200	5	151.9959	16.122	1.1755	2.086			
25	14603	14602		1400	5	151.9959	7.946	1.176	2.087			
25	14601	14600	14511	1600	5	151.9959	6.662	1.1815	2.0725	3.29	17.01	0.03
25	14599	14598		1800	5	151.9959	5.659					
25	14597		14512	2000	5	151.9959	5.055		2.86	14.52	0.03	
25	14574			2000	5	151.9959	5.516					
25	14572	14573		2200	5	151.9959	3.653	1.1817	2.0706			
25	14570			2400	5	151.9959	3.041					
25	14568	14569	14577	2600	5	151.9959	2.839	1.1849	2.063	2.62	10.22	
25	14566			2800	5	151.9959	1.687					
25	14564	14565	14578	3000	5	151.9959	13.045	1.1859	2.0715	2.48	11.5	0.03
25	14562	14563	14579	3500	5	151.9959	2.652	1.1884	2.0652	2.16	10.54	0.02
25	14560	14561	14580	4000	5	151.9959	1.835	1.1894	2.0641	1.73	10.4	0.04
25	14558	14559	14581	4500	5	151.9959	1.214	1.1834	2.0741	2.16	8.01	0.17
25	14556	14557	14582	4870	5	151.9959	1.988	1.185	2.0487	2.59	7.27	0.13
25	14554	14555	14583	4950	5	151.9959	2.297	1.1963	2.0364	2.39	6.84	0.14
25	14552		14584	4990	5	151.9959	2.156		2.2	6.46	0.17	



26	14638		0	4	152	13.378						
27	14639		0	3	152.0133	14.056						
27	14663	14678	25	3	152.0133	16.079		26.29	62.7	0.06		
27	14661		45	3	152.0133	15.962						
27	14659	14679	60	3	152.0133	19.039		25.2	56.5	0.05		
27	14657		80	3	152.0133	20.359						
27	14655	14680	100	3	152.0133	18.455		19.05	32.76	0.04		
27	14653		120	3	152.0133	17.932						
27	14651	14681	160	3	152.0133	29.708		9.94	32.36	0.05		
27	14649		200	3	152.0133	19.906						
27	14647	14682	250	3	152.0133	18.449		6.73	27.21	0.04		
27	14645		300	3	152.0133	19.088						
27	14643		350	3	152.0133	18.356						
27	14641		400	3	152.0133	17.619						
27	14766		400	3	152.0133	18.327						
27	14764		450	3	152.0133	18.344						
27	14762	14683	500	3	152.0133	18.766		6.06	27.96	0.08		
27	14760		600	3	152.0133	17.362						
27	14758		700	3	152.0133	13.272						
27	14756	14684	800	3	152.0133	11.477		4.81	20.81	0.13		
27	14754		900	3	152.0133	9.853						
27	14752		1000	3	152.0133	9.203						
27	14750		1200	3	152.0133	8.314						
27	14748	14685	1400	3	152.0133	7.765		5.27	27.42			
27	14746		1600	3	152.0133	6.178						
27	14744		1800	3	152.0133	5.618						
27	14721		1800	3	152.0133	4.899						
27	14719	14724	2000	3	152.0133	4.352		4.16	21.14	0		
27	14717		2200	3	152.0133	3.491						
27	14715	14725	2400	3	152.0133	1.936		3.51	21.64	0.05		
27	14713		2600	3	152.0133	2.526						
27	14711	14726	2800	3	152.0133	2.298		3.39	22.25	0.04		
27	14709		3000	3	152.0133	1.872						
27	14707	14727	3400	3	152.0133	1.872		2.88	20.21	0.04		
27	14705	14728	3900	3	152.0133	1.842		3.18	20.58	0.03		
27	14703	14729	4405	3	152.0133	2.093		3.51	14.69	0.08		
27	14701	14730	4485	3	152.0133	2.163		29.73	19.81	0.13		
27	14699	14731	4525	3	152.0133	1.741		5.71	19.19	0.09		
28	14785		0	1	152.0002	14.5						
29	14786		0	0	151.9956	16.432						
29	14830	14831	14789	25	0	151.9956	17.858	1.1535	2.111	39.76	84.66	0.2
29	14827	14828		50	0	151.9956	17.137	1.163	2.1051			
29	14824	14825	14790	75	0	151.9956	17.391	1.1685	2.093	30.03	87.6	0.23
29	14821	14822		90	0	151.9956	18.09	1.1637	2.1067			
29	14818	14819	14791	115	0	151.9956	16.915	1.1676	2.0841	14.68	64.47	0.17
29	14815	14816	14792	130	0	151.9956	17.241	1.1627	2.1069		54.35	0.22
29	14812	14813	14793	155	0	151.9956	15.147	1.1655	2.0971	10.13	40.49	0.31

29	14809	14810		175	0	151.9956	14.507	1.1642	2.1032			
29	14957	14958	14794	200	0	151.9956	15.918	1.1652	2.0991	9.29	43.79	0.46
29	14954		14795	250	0	151.9956	15.354			9.06	41.99	0.42
29	14951	14952		300	0	151.9956	19.607	1.1612	2.1071			
29	14948	14949	14796	350	0	151.9956	18.926	1.1668	2.0859	9.81	44.21	0.17
29	14945	14946	14883	400	0	151.9956	19.329	1.162	2.1025	11.68	60.32	0.17
29	14942		14884	500	0	151.9956	19.178			9.52	46.03	0.16
29	14939	14940	14885	600	0	151.9956	18.789	1.1712	2.0869	7.33	39.09	0.1
29	14936	14937	14886	700	0	151.9956	14.943	1.1643	2.1	6.31	29.67	0.12
29	14912	14913	14887	800	0	151.9956	11.349	1.1758	2.081	5.96	29.05	0.16
29	14909	14910	14888	1000	0	151.9956	10.385	1.1613	2.0937	5.38	25.01	0.11
29	14906	14907	14889	1200	0	151.9956	9.398	1.1717	2.0883	5.59	28.63	0.09
29	14903	14904	14890	1400	0	151.9956	6.931	1.1661	2.0985	5.67	27.96	0
29	14900	14901		1600	0	151.9956	7.196	1.175	2.0841			
29	14897	14898	14916	1800	0	151.9956	6.134	1.1679	2.0929	5.22	26.81	0.07
29	14894	14895		2000	0	151.9956	4.923	1.1628	2.0951			
29	14891		14917	2200	0	151.9956	5.108			5.2	28.78	0.05
29	14854	14855		2500	0	151.9956	2.969	1.1735	2.0883			
29	14851	14852	14918	2800	0	151.9956	2.939	1.1724	2.086	4.41	25.2	0.12
29	14848	14849		3200	0	151.9956	2.761	1.1674	2.0899			
29	14845	14846	14919	3600	0	151.9956	3.995	1.1664	2.0931	3.85	22.9	0.05
29	14842		14920	4000	0	151.9956	1.996			4.31	31.43	0.1
29	14839	14840	14921	4215	0	151.9956	2.979	1.1635	2.0933	5.7	37.27	0.11
29	14836	14837	14922	4295	0	151.9956	2.264	1.173	2.0892	5.04	37.44	0.09
29	14833		14923	4335	0	151.9956	2.861			4.97	36.34	0.09
30	14960			0	-1	152	14.988					
31	14975			0	-3	152.0002	15.315					
31	14999		14967	30	-3	152.0002	18.99			30.82	59.36	0.29
31	14997			65	-3	152.0002	19.15					
31	14995		14968	85	-3	152.0002	18.379			25.09	68.45	0.36
31	14993			105	-3	152.0002	17.034					
31	14991			130	-3	152.0002	14.639					
31	14989		14969	150	-3	152.0002	13.697			12.13	39.43	0.12
31	14987			180	-3	152.0002	18.408					
31	14985			210	-3	152.0002	19.725					
31	14983		14970	260	-3	152.0002	21.986			6.28	19.81	0.06
31	14981			300	-3	152.0002	24.784					
31	14979			340	-3	152.0002	21.667					
31	14977		14971	400	-3	152.0002	21.41			9.92	23.67	0.1
31	15093			400	-3	152.0002	19.262					
31	15091			450	-3	152.0002	17.961					
31	15089			500	-3	152.0002	17.25					
31	15087		14972	600	-3	152.0002	13.749			4.78	20.72	0.05
31	15085			700	-3	152.0002	13.892					
31	15083			800	-3	152.0002	13.585					
31	15081		14973	900	-3	152.0002	12.369			3.96	17.63	0.08
31	15079			1000	-3	152.0002	10.691					

31	15077		1200	-3	152.0002	16.121						
31	15075	14974	1400	-3	152.0002	9.974		3.68	19.74	0.03		
31	15073		1600	-3	152.0002	5.951						
31	15071		1800	-3	152.0002	5.423						
31	15035		1800	-3	152.0002	6.195						
31	15033	15063	2000	-3	152.0002	5.019		3.68	19.76	0.08		
31	15031		2250	-3	152.0002	4.327						
31	15029	15064	2500	-3	152.0002	4.489		2.72	15.13	0.04		
31	15027		2750	-3	152.0002	3.415						
31	15025	15065	3000	-3	152.0002	2.821		2.79	14.11	0.05		
31	15023		3400	-3	152.0002	2.496						
31	15021	15066	3800	-3	152.0002	2.364		2.31	14.64	0.05		
31	15019	15067	4200	-3	152.0002	2.074		2.42	15.45	0.08		
31	15017	15068	4470	-3	152.0002	1.953		2.55	13.48	0.13		
31	15015	15069	4550	-3	152.0002	2.083		2.43	16.04	0.12		
31	15013	15070	4590	-3	152.0002	2		1.78	13.8			
32	15107		0	-4	152	14.205						
33	15108		0	-5	152.0006	15.385						
33	15153	15154	15123	25	-5	152.0006	17.264	1.1691	2.091	32.33	61.55	0.28
33	15151	15152		65	-5	152.0006	17.71	1.1696	2.0918			
33	15149	15150	15124	80	-5	152.0006	17.341	1.1685	2.0936	35.1	95.89	0.42
33	15147	15148		100	-5	152.0006	16.098	1.1687	2.0936			
33	15145	15146	15125	125	-5	152.0006	17.585	1.1667	2.0977	17.83	41.18	0.2
33	15143	15144		150	-5	152.0006	14.294	1.1677	2.0956			
33	15141	15142	15126	175	-5	152.0006	16.507	1.1695	2.0901	8.92	45.69	0.14
33	15139	15140		200	-5	152.0006	16.299	1.1674	2.0944			
33	15137	15138	15127	250	-5	152.0006	19.554	1.1665	2.094	5.97	22.53	0.07
33	15135			300	-5	152.0006	16.782					
33	15133	15134		350	-5	152.0006	15.428	1.164	2.0936			
33	15131		15128	400	-5	152.0006	20.918			6.47	32.04	0.1
33	15239	15240		400	-5	152.0006	18.831	1.1661	2.0913			
33	15237			450	-5	152.0006	17.301					
33	15235	15236		500	-5	152.0006	14.657	1.1666	2.0908			
33	15233	15234	15129	600	-5	152.0006	14.014	1.1648	2.0973	4.15	22.53	0.1
33	15231	15232		700	-5	152.0006	12.171	1.1654	2.0933			
33	15229	15230		800	-5	152.0006	10.109	1.1615	2.0956			
33	15227	15228	15130	900	-5	152.0006	9.006	1.1664	2.0905	2.95	16.2	0.04
33	15225	15226		1000	-5	152.0006	12.939	1.1669	2.0872			
33	15223	15224		1200	-5	152.0006	6.151	1.1709	2.089			
33	15221	15222	15209	1400	-5	152.0006	5.038	1.1751	2.0837	3.38	17.09	0.11
33	15219	15220		1600	-5	152.0006	5.308	1.1798	2.0768			
33	15217	15218		1800	-5	152.0006	4.716	1.1772	2.0818			
33	15181	15182		1800	-5	152.0006	4.892	1.181	2.0772			
33	15179	15180	15210	2000	-5	152.0006	5.958	1.1822	2.0749	3.36	17.14	0.05
33	15177	15178		2250	-5	152.0006	3.384	1.1709	2.0887			
33	15175	15176	15211	2500	-5	152.0006	3.003	1.1761	2.0794	2.79	13.65	0.04
33	15173	15174		2750	-5	152.0006	2.021	1.1651	2.0924			

33	15171			3000	-5	152.0006	2.929					
33	15169		15212	3500	-5	152.0006	2.149			2.54	12.53	0.03
33	15167		15213	4000	-5	152.0006	1.269			1.79	10.75	0.06
33	15165		15214	4500	-5	152.0006	1.648			2.17	11.68	0.17
33	15163	15164	15215	5175	-5	152.0006	2.393	1.1908	2.0601	2.36	6.8	0.28
33	15161	15162		5255	-5	152.0006	2.313	1.1812	2.0691			
33	15159	15160	15216	5295	-5	152.0006	2.421	1.1741	2.0817	1.81	6.54	0.16
33.5	15253			0	-6	152	13.901					
34	15267			0	-8	152.0002	14.993					
34	15290			25	-8	152.0002	16.788					
34	15288			65	-8	152.0002	16.106					
34	15286			80	-8	152.0002	15.523					
34	15284			110	-8	152.0002	17.198					
34	15282			145	-8	152.0002	15.207					
34	15280			200	-8	152.0002	13.487					
34	15278			260	-8	152.0002	18.829					
34	15276			320	-8	152.0002	19.026					
34	15274			480	-8	152.0002	15.398					
34	15272			600	-8	152.0002	15.033					
34	15270			800	-8	152.0002	11.022					
34	15268			1000	-8	152.0002	8.721					
34.5	15313			0	-9	152	12.843					
35	15319			0	-11	152.0002	14.031					
35	15342	15343	15293	25	-11	152.0002	16.236	1.1705	2.0912	32.64	45.23	0.25
35	15339	15340		50	-11	152.0002	15.372	1.1683	2.0952			
35	15336	15337	15294	75	-11	152.0002	15.42	1.1699	2.0918	22.05	40.29	0.31
35	15333	15334	15295	100	-11	152.0002	19.766	1.1709	2.0898	16.15	29.35	0.21
35	15330	15331		125	-11	152.0002	15.174	1.1703	2.0916			
35	15327	15328	15296	150	-11	152.0002	16.568	1.17	2.0908	12.07	60.85	0.13
35	15324	15325	15297	225	-11	152.0002	13.501	1.1705	2.0878	7.32	40.55	0.1
35	15321	15322		300	-11	152.0002	13.602	1.1647	2.0944			
35	15457	15458	15298	350	-11	152.0002	13.422	1.1647	2.0943	6.66	38.66	0.15
35	15454	15455		450	-11	152.0002	12.202	1.1612	2.0987			
35	15451		15299	550	-11	152.0002	12.161			5.27	32.18	0.18
35	15448	15449	15300	800	-11	152.0002	9.097	1.1642	2.0961	3.67	22.3	
35	15445	15446		1000	-11	152.0002	7.529	1.1691	2.0903			
35	15442	15443		1200	-11	152.0002	6.559	1.1711	2.0888			
35	15439	15440	15347	1400	-11	152.0002	5.408	1.1748	2.0859	2.44	14.47	0.1
35	15436	15437		1600	-11	152.0002	4.73	1.1781	2.0791			
35	15433	15434		1800	-11	152.0002	4.129	1.1819	2.0749			
35	15430	15431	15348	2000	-11	152.0002	2.377	1.1773	2.0846	2.26	12.3	0.1
35	15427		15349	2200	-11	152.0002	2.199			1.73	10.15	0.09
35	15424	15425	15350	2400	-11	152.0002	2.11	1.1831	2.0722	1.91	10.24	0.08
35	15421	15422	15351	2600	-11	152.0002	1.326	1.1759	2.0803	1.71	9.51	0.12
35	15418	15419	15352	2800	-11	152.0002	2.035	1.1843	2.069	1.49	9.34	0.12
35	15415		15353	3000	-11	152.0002	2.428			1.58	9.06	0.07
35	15375	15376	15404	3200	-11	152.0002	2.291	1.1902	2.0609	1.32	9.25	0.07

35	15412			3400	-11	152.0002	1.964					
35	15372	15373	15405	3600	-11	152.0002	2.08	1.1859	2.069	1.66	7.6	0.04
35	15369	15370	15406	4000	-11	152.0002	1.53	1.1932	2.077	1.14	7.27	0.05
35	15366	15367	15407	4500	-11	152.0002	1.426	1.1854	2.0735	0.86	10.51	0.13
35	15363	15364	15408	4750	-11	152.0002	2.414	1.1886	2.0656	0.78	6.84	0.23
35	15360	15361	15409	4970	-11	152.0002	1.857	1.187	2.0704	1.38	5.44	0.16
35	15357	15358	15410	5050	-11	152.0002	1.856	1.1925	2.0606	0.76	5.39	0.18
35	15354	15355	15411	5090	-11	152.0002	2.433	1.1857	2.0714	0.86	5.88	0.17
35.5	15472			0	-12	152	13.443					
36	15473			0	-13	152.0001	15.369					
36	15509			25	-13	152.0001	19.367					
36	15507			60	-13	152.0001	15.814					
36	15505			110	-13	152.0001	17.521					
36	15503			150	-13	152.0001	15.53					
36	15501			200	-13	152.0001	14.72					
36	15499			250	-13	152.0001	13.296					
36	15497			350	-13	152.0001	15.05					
36	15495			400	-13	152.0001	13.699					
36	15493			500	-13	152.0001	13.134					
36	15491			650	-13	152.0001	10.225					
36	15489			800	-13	152.0001	8.198					
36	15487			1000	-13	152.0001	6.8					
37	15544			0	-15	152.0002	14.411					
37	15542		15512	25	-15	152.0002	15.158			21.16	38.07	0.16
37	15540		15513	60	-15	152.0002	14.619			20.69	39.36	0.17
37	15538			100	-15	152.0002	14.153					
37	15536		15514	135	-15	152.0002	16.407			16.04	46.8	0
37	15534			150	-15	152.0002	13.638					
37	15532			180	-15	152.0002	13.021					
37	15530			200	-15	152.0002	13.33					
37	15528		15515	250	-15	152.0002	12.719			6	45.41	0.13
37	15526			300	-15	152.0002	13.412					
37	15524			350	-15	152.0002	12.787					
37	15522			400	-15	152.0002	14.072					
37	15520		15516	450	-15	152.0002	14.005			4.81	33.14	0.16
37	15638			450	-15	152.0002	14.113					
37	15636			500	-15	152.0002	11.835					
37	15634			575	-15	152.0002	11.918					
37	15632			650	-15	152.0002	10.391					
37	15630			725	-15	152.0002	7.836					
37	15628			800	-15	152.0002	6.972					
37	15626		15517	900	-15	152.0002	8.444			3.18	24.57	0.25
37	15624			1000	-15	152.0002	7.105					
37	15622		15518	1200	-15	152.0002	5.861			3.54	26.66	0
37	15620			1400	-15	152.0002	5.788					
37	15618			1600	-15	152.0002	4.042					
37	15616		15519	1800	-15	152.0002	3.223			2	16.97	0.11

37	15580		1800	-15	152.0002	3.929						
37	15578		2100	-15	152.0002	2.836						
37	15576	15608	2400	-15	152.0002	1.765		1.41	9.98		0.08	
37	15574	15609	2600	-15	152.0002	2.185		1.01	8.74		0.07	
37	15572	15610	2800	-15	152.0002	1.535		1.1	9.34		0.09	
37	15570	15611	3080	-15	152.0002	1.888		0.97	8.02		0.06	
37	15568	15612	3200	-15	152.0002	2.473		1.01	7.68		0.05	
37	15566	15613	3700	-15	152.0002	1.472						
37	15564		4200	-15	152.0002	2.217						
37	15562	15614	4620	-15	152.0002	1.803		1.01	5.16		0.26	
37	15560		4700	-15	152.0002	2.801						
37	15558	15615	4740	-15	152.0002	1.529			5.55		0.23	
37.5	15656		0	-16	152	13.699						
38	15657		0	-18	152.0005	15.934						
38	15693		25	-18	152.0005	15.316						
38	15691		55	-18	152.0005	14.932						
38	15689		90	-18	152.0005	13.937						
38	15687		125	-18	152.0005	15.875						
38	15685		150	-18	152.0005	13.468						
38	15683		250	-18	152.0005	13.877						
38	15681		325	-18	152.0005	13.53						
38	15679		425	-18	152.0005	14.066						
38	15677		500	-18	152.0005	12.214						
38	15675		650	-18	152.0005	11.704						
38	15673		800	-18	152.0005	9.057						
38	15671		1000	-18	152.0005	8.316						
38.5	15704		0	-19	152	12.42						
39	15705		0	-20	152.0001	12.875						
39	15741	15742	15696	25	-20	152.0001	14.688	1.1714	2.0892	19.27	23.72	0.11
39	15739	15740	15697	45	-20	152.0001	15.7	1.1706	2.0899	18.2	23.77	0.12
39	15737	15738		90	-20	152.0001	12.701	1.1681	2.0938			
39	15735	15736	15698	120	-20	152.0001	13.754	1.1691	2.0914	14.81	34.96	0.1
39	15733	15734	15699	150	-20	152.0001	11.578	1.1665	2.0954	12.48	27.23	0.11
39	15731	15732	15700	200	-20	152.0001	18.605	1.1645	2.0954	10.28	53.33	0.1
39	15729	15730		250	-20	152.0001	13.219	1.1666	2.0907			
39	15727	15728	15701	300	-20	152.0001	11.855	1.1629	2.0941	5.1	31.72	0.14
39	15725	15726		350	-20	152.0001	13.869	1.1625	2.0933			
39	15723	15724	15702	400	-20	152.0001	11.865	1.1562	2.1001	4.62	24.9	0.07
39	15721	15722		450	-20	152.0001	13.908	1.1537	2.1024			
39	15719	15720	15703	500	-20	152.0001	13.085	1.1522	2.1046		24.76	
39	15836	15837	15744	500	-20	152.0001	12.493	1.151	2.1056	3.76		0
39	15834	15835		550	-20	152.0001	13.246	1.1541	2.1021			
39	15832	15833	15745	600	-20	152.0001	12.823	1.1516	2.1061	3.46	22.21	0.28
39	15830	15831		650	-20	152.0001	12.779	1.1523	2.1041			
39	15828	15829		700	-20	152.0001	10.975	1.1541	2.1029			
39	15826	15827	15746	800	-20	152.0001	9.586	1.1553	2.1033	2.5	17.88	0.16
39	15824	15825		900	-20	152.0001	9	1.1624	2.0944			

39	15822	15823	15747	1000	-20	152.0001	6.628	1.1613	2.0968	2.24	15.9	0.18
39	15820			1100	-20	152.0001	6.068					
39	15818	15819	15748	1200	-20	152.0001	6.021	1.167	2.0912	1.39	15.45	0.13
39	15816	15817	15749	1400	-20	152.0001	4.371	1.1694	2.0882	1.45	15.78	0.19
39	15814	15815	15750	1600	-20	152.0001	3.817	1.1707	2.0871	1.36	14.05	0.11
39	15774	15775	15802	1600	-20	152.0001	4.964	1.1771	2.077		14.82	0.12
39	15772	15773	15751	1800	-20	152.0001	3.09	1.1749	2.082	1.01	11.04	0.16
39	15770	15771		2000	-20	152.0001	2.892	1.1786	2.077			
39	15768	15769		2200	-20	152.0001	2.938	1.1799	2.074			
39	15766	15767	15803	2400	-20	152.0001	2.042	1.1833	2.0714	0.99	8.62	0.12
39	15764	15765		2600	-20	152.0001	2.059	1.183	2.072			
39	15762	15763	15804	3000	-20	152.0001	3.142	1.1875	2.0656	0.63	7.1	0.07
39	15760	15761	15805	3400	-20	152.0001	2.334	1.1875	2.0654	0.54	6.86	0.04
39	15758	15759	15806	3800	-20	152.0001	2.338	1.1884	2.0638	0.46	5.92	0.06
39	15756	15757	15807	4060	-20	152.0001	2.028	1.1915	2.059	0.41	5.05	0.11
39	15754	15755	15808	4140	-20	152.0001	2.244	1.1895	2.0622	0.43	5.08	0.11
39	15752		15809	4180	-20	152.0001	1.335			0.63	5.05	

\* GT# represents GEOTRACES sample number.