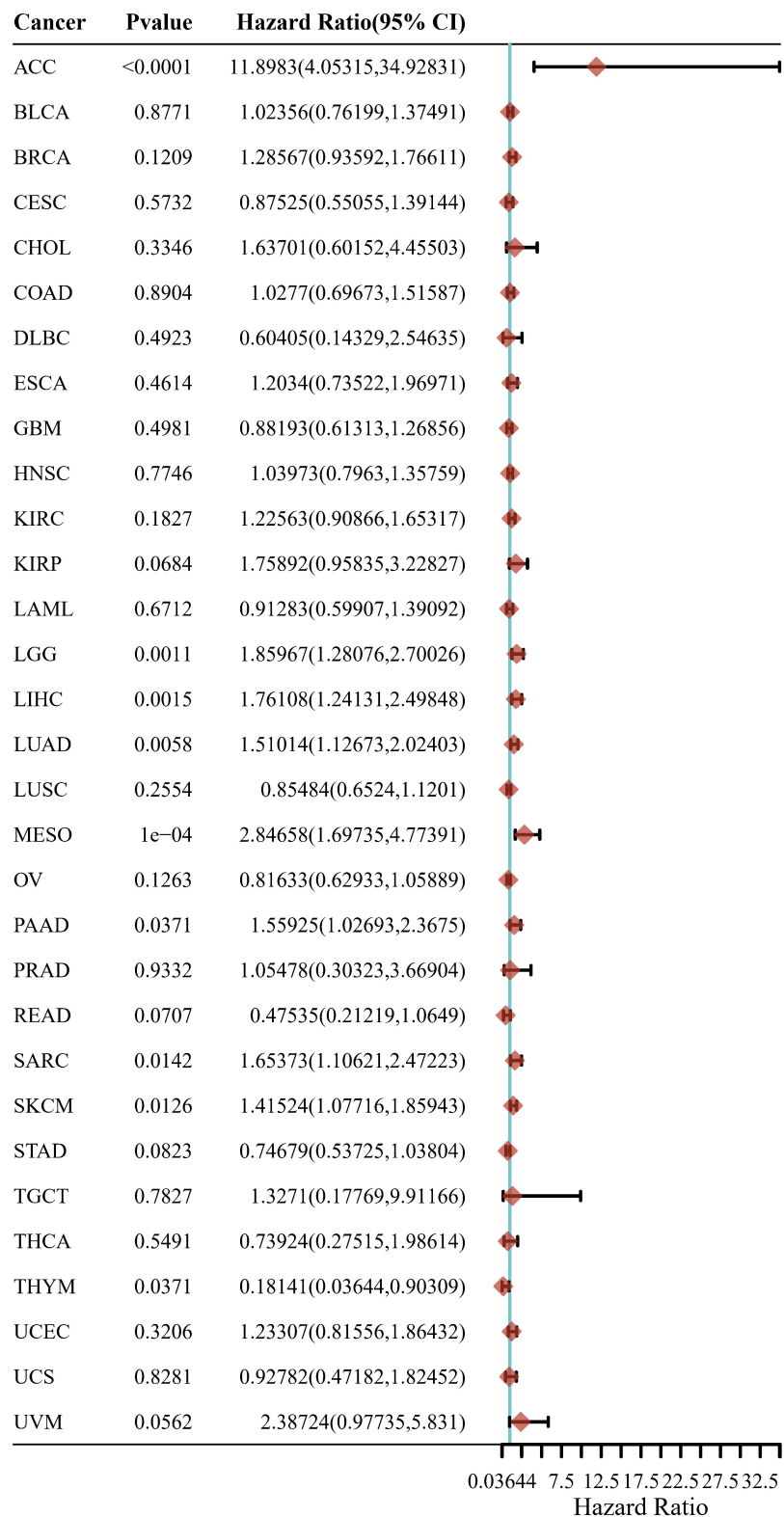


Supplementary Material

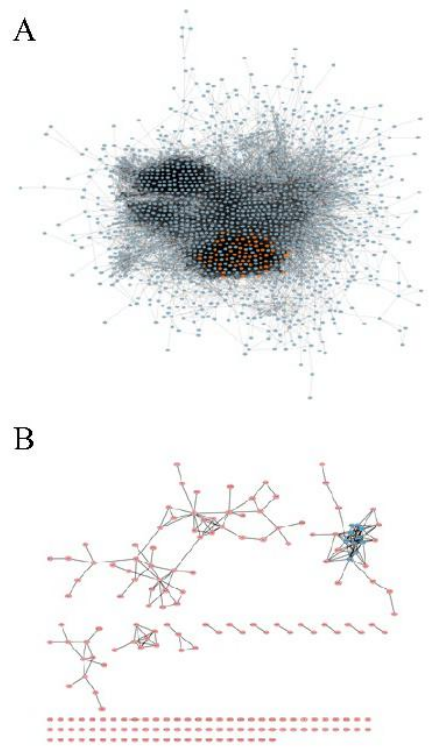
**FANCI is associated with poor prognosis and immune
infiltration in liver hepatocellular carcinoma**

**Yibo Hou¹, Jianing Li², Albert Yu¹, Kexin Deng¹, Jiawei Chen¹, Zixian Wang¹,
Laiqiang Huang^{1*}, Shaohua Ma^{1*}, Xiaoyong Dai^{1*}**

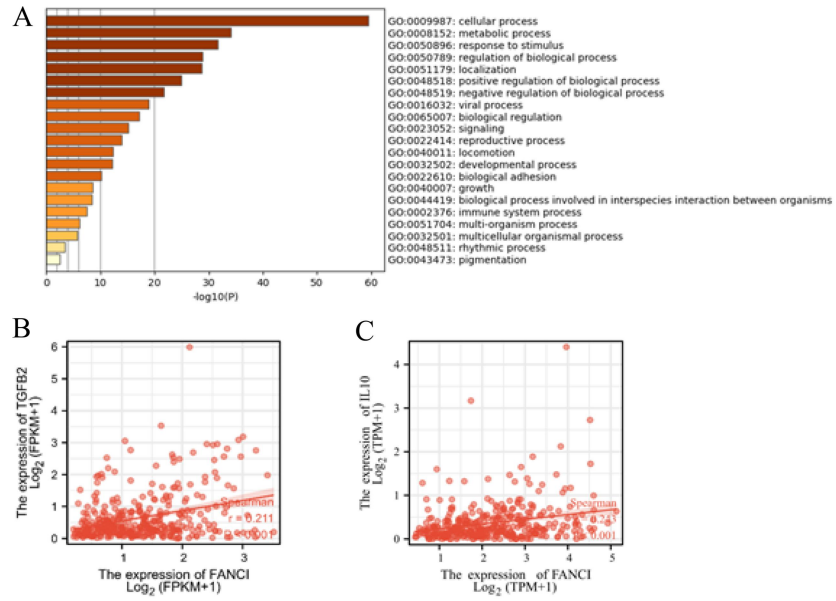
* **Correspondence:** Laiqiang Huang, huanglq@tsinghua.edu.cn; Shaohua Ma, ma.shaohua@sz.tsinghua.edu.cn; Xiaoyong Dai, dai-xy18@tsinghua.org.cn.



Supplementary Figure 2. Forest plot of prognostic characteristics of FANCI in 31 kinds of cancers.



Supplementary Figure 3. PPI network of upregulated and downregulated genes (A, B).



Supplementary Figure 4. (A) the GO analysis of positively correlated DEGs in LIHC. (B) the relationship between FANCI and TGF- β . (C) the relationship between FANCI and IL-10.