

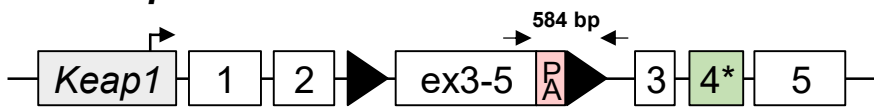
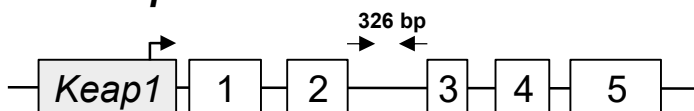
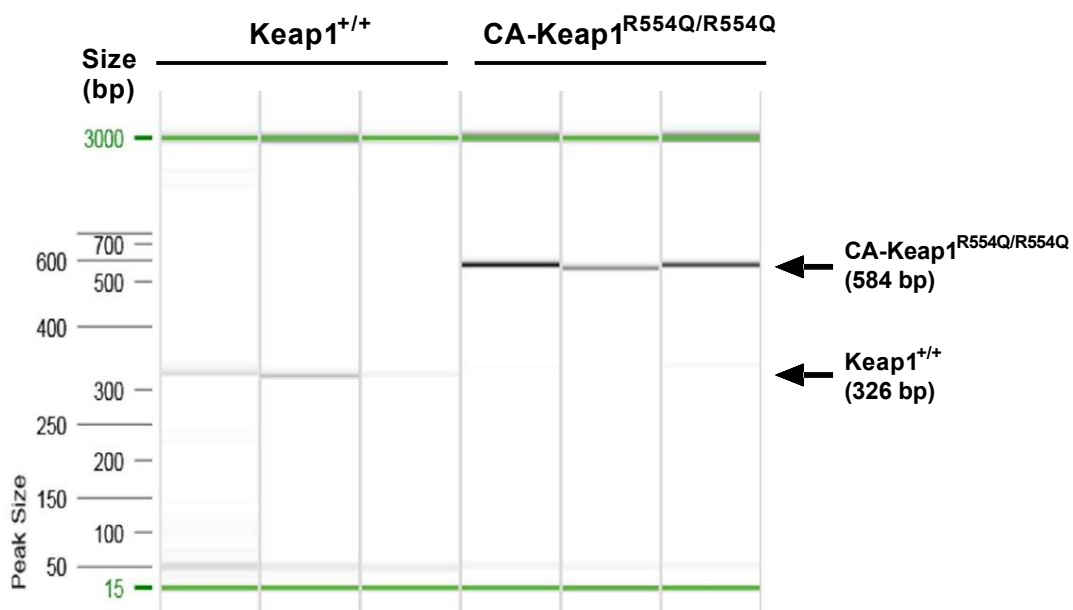
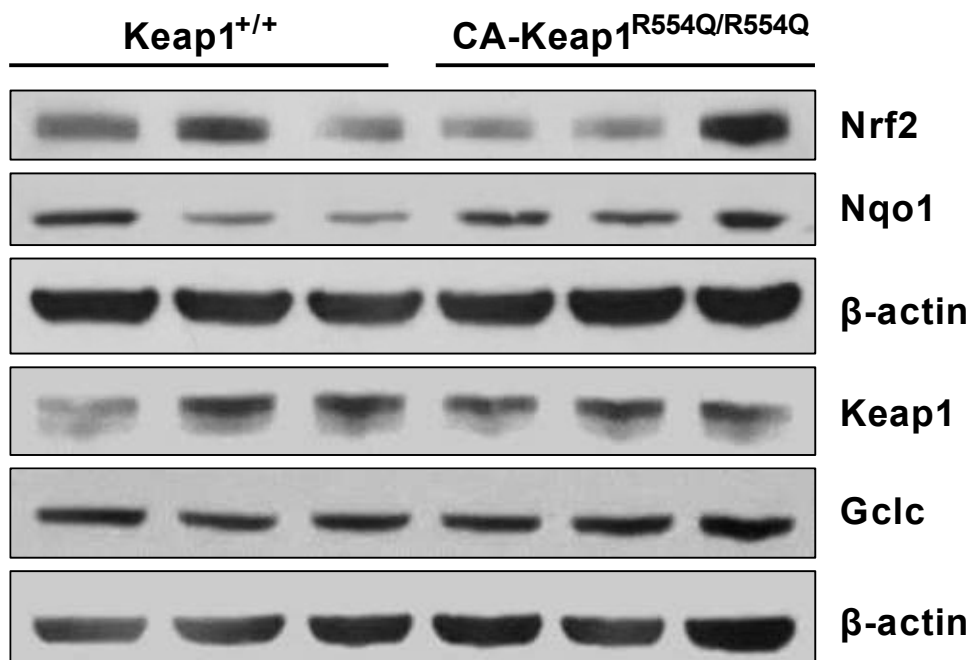
A CA-Keap1^{R554Q} allele**B** WT Keap1 allele**C****D**

Figure S1. The CA-Keap1^{R554Q} allele is not hypomorphic. Schematic of **(A)** CA-Keap1^{R554Q} and **(B)** WT Keap1 alleles with genotyping primers. **(C)** Detection of CA-Keap1^{R554Q} and WT Keap1 by QIAxcel electrophoresis. **(D)** Western blot analysis of Nrf2, Nqo1, Keap1, Gclc, and β -actin expression in WT Keap1 and CA-Keap1^{R554Q/R554Q} MEFs (n=3 individual MEF lines from each genotype).