

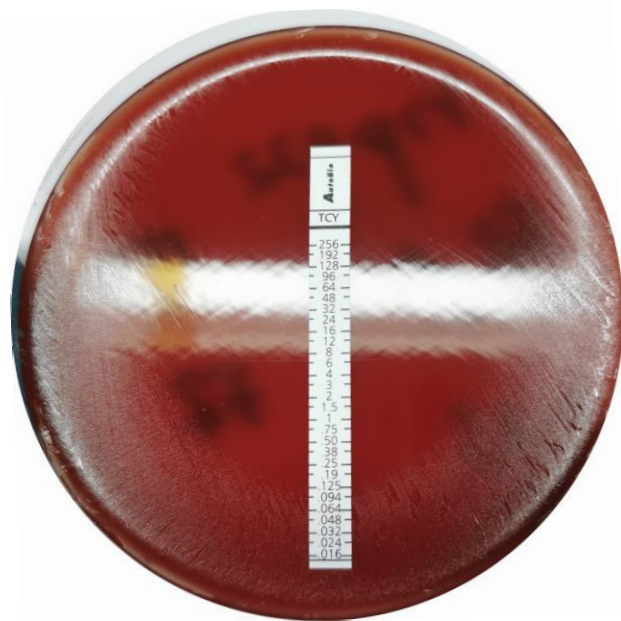
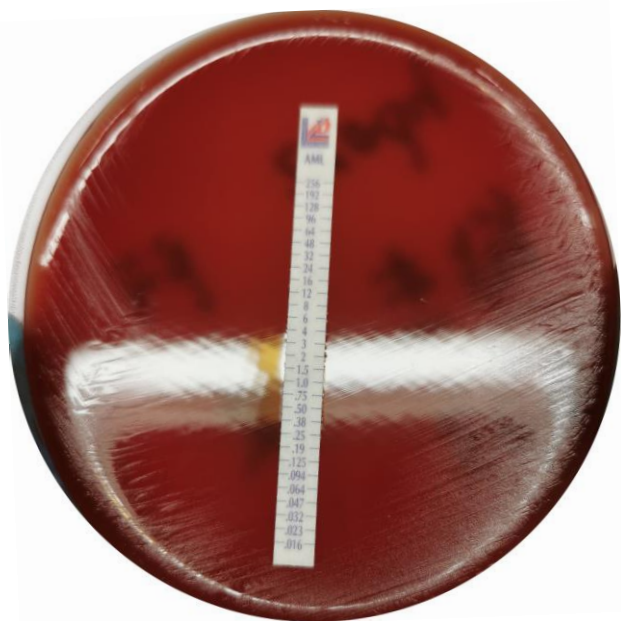
## **Supplementary Materials**

Supplementary Figure 1. Representative image of AST. The MIC values of the strains showed here for CLR and MTZ, > 256 (resistant); LVX, 0.064 (sensitive); AMX, 0.016 (sensitive); TCY, 0.125 (sensitive).

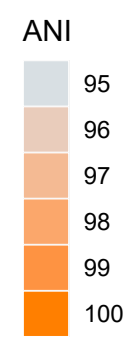
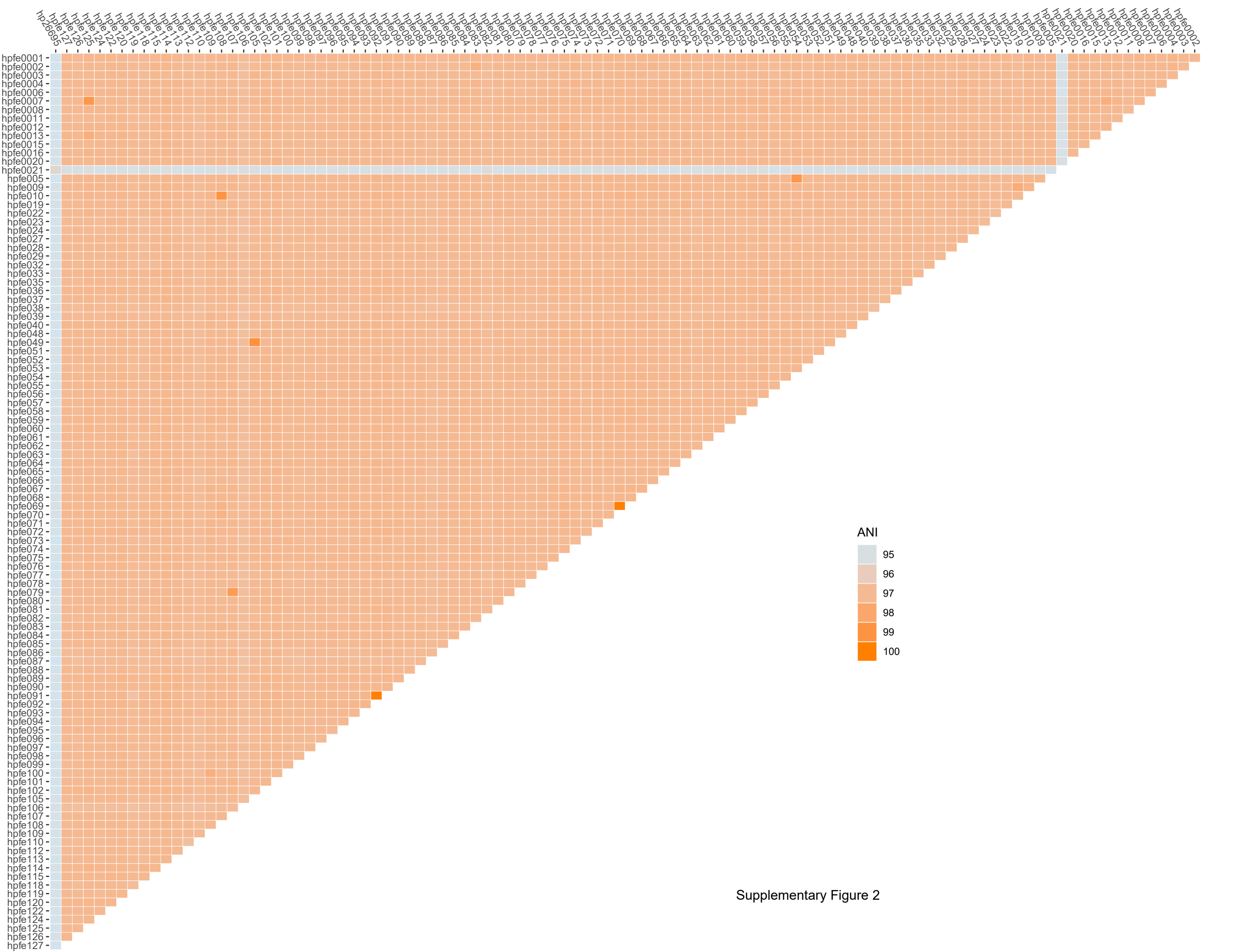
Supplementary Figure 2. Heatmap representation of ANI analysis. Results showed that the ANI values among the species and reference strain ATCC 26695 are all larger than 95%, indicating the identities of the strains is Hp.

Supplementary Table 1. MIC values and genotypes for each Hp strain to 5 antibiotics

Supplementary Table 2. Heterozygous status of rRNA



Supplementary Figure 1



Supplementary Figure 2