

SUPPLEMENTARY MATERIAL

Genomic characterization of *Mycoplasma arginini* isolated from a housefly in a dairy farm and comparison with isolates from bovine milk and lung tissue

G. Gioia,^{1a} M. Severgnini,^{2a} P. Cremonesi,^{3a} B. Castiglioni,³ J. Freeman,⁴ A. Sipka,¹ C. Santisteban,¹ M. Wieland,¹ V. Alanis Gallardo,^{1,5} J.G. Scott,⁴ P. Moroni,^{1,6b} M.F. Addis⁶

¹Quality Milk Production Services, Animal Health Diagnostic Center, Cornell University, Ithaca, NY 14850, United States of America

² Institute of Biomedical Technologies, National Research Council, via f.lli Cervi, 93, 20054, Segrate, Milano, Italy

³ Institute of Agricultural Biology and Biotechnology, National Research Council, via Einstein, 26900, Lodi, Italy.

⁴ Department of Entomology, College of Agriculture and Life Sciences, Cornell University, Ithaca, NY, 14853

⁵ Departamento de Medicina Preventiva y Salud Pública, Facultad de Medicina Veterinaria y Zootecnia, Universidad Nacional Autónoma de México, Ciudad Universitaria, CDMX 04510, México

⁶ Università degli Studi di Milano, Dipartimento di Medicina Veterinaria e Scienze Animali, Via dell'Università, 6, 26900, Lodi, Italy

^a These authors contributed equally

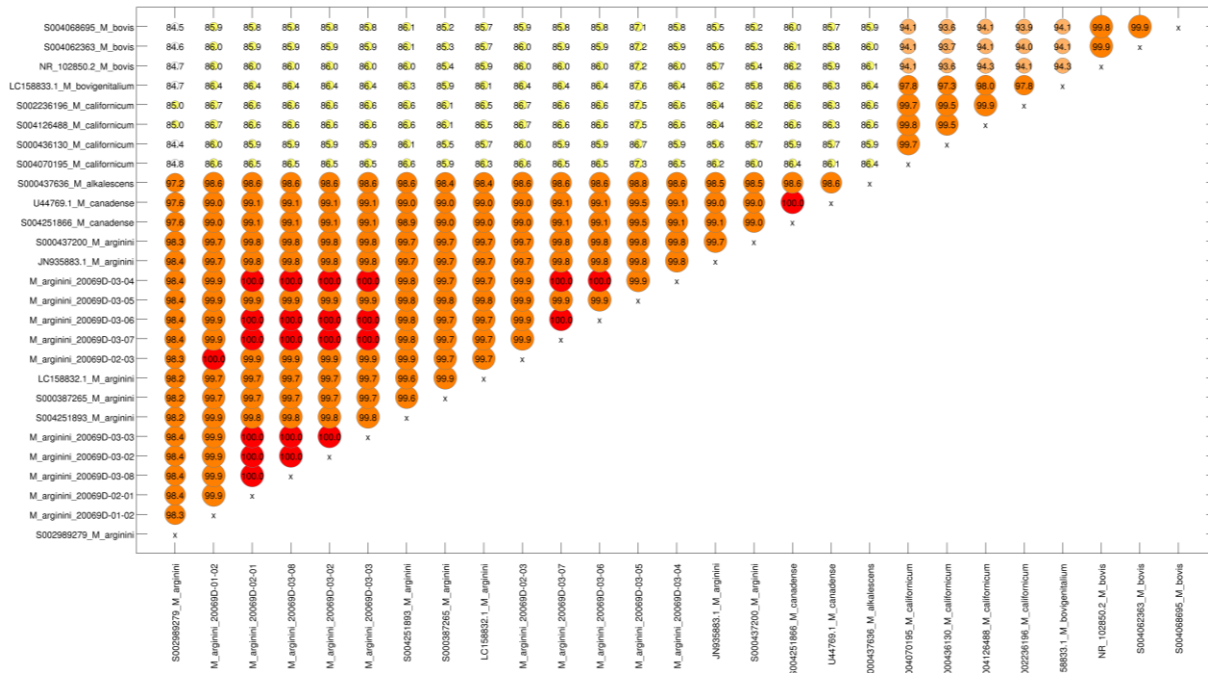
^b Corresponding author: Paolo Moroni, pm389@cornell.edu

SUPPLEMENTARY FIGURES	3
SUPPLEMENTARY FIGURE 1	3
SUPPLEMENTARY FIGURE 2	4
SUPPLEMENTARY FIGURE 3	5
SUPPLEMENTARY FIGURE 4	6
SUPPLEMENTARY FIGURE 5	7
SUPPLEMENTARY FIGURE 6	8
SUPPLEMENTARY FIGURE 7	9
SUPPLEMENTARY FIGURE 8	10
SUPPLEMENTARY FIGURE 9	11

Supplementary Figures

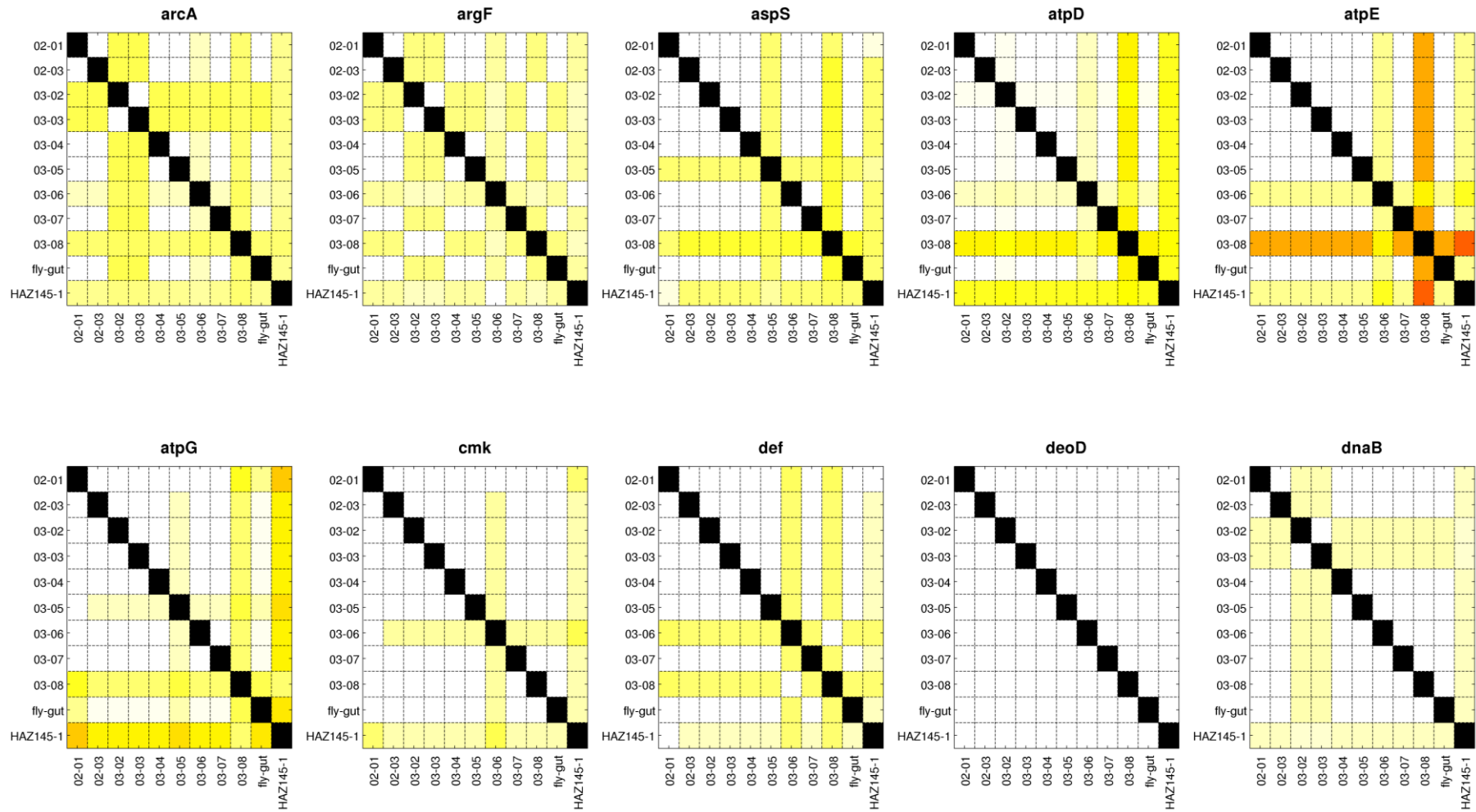
Supplementary Figure 1

Diagram depicting the pairwise percentage of identity (Blastn value) among the 27 16S rRNA sequences analyzed. Circle size is proportional to the identity, whereas the color graphically represents the identity: 100.0%, 95.0%-99.9%, 90.0%-94.9%, 85.0%-89.9%, ≤84.9%.



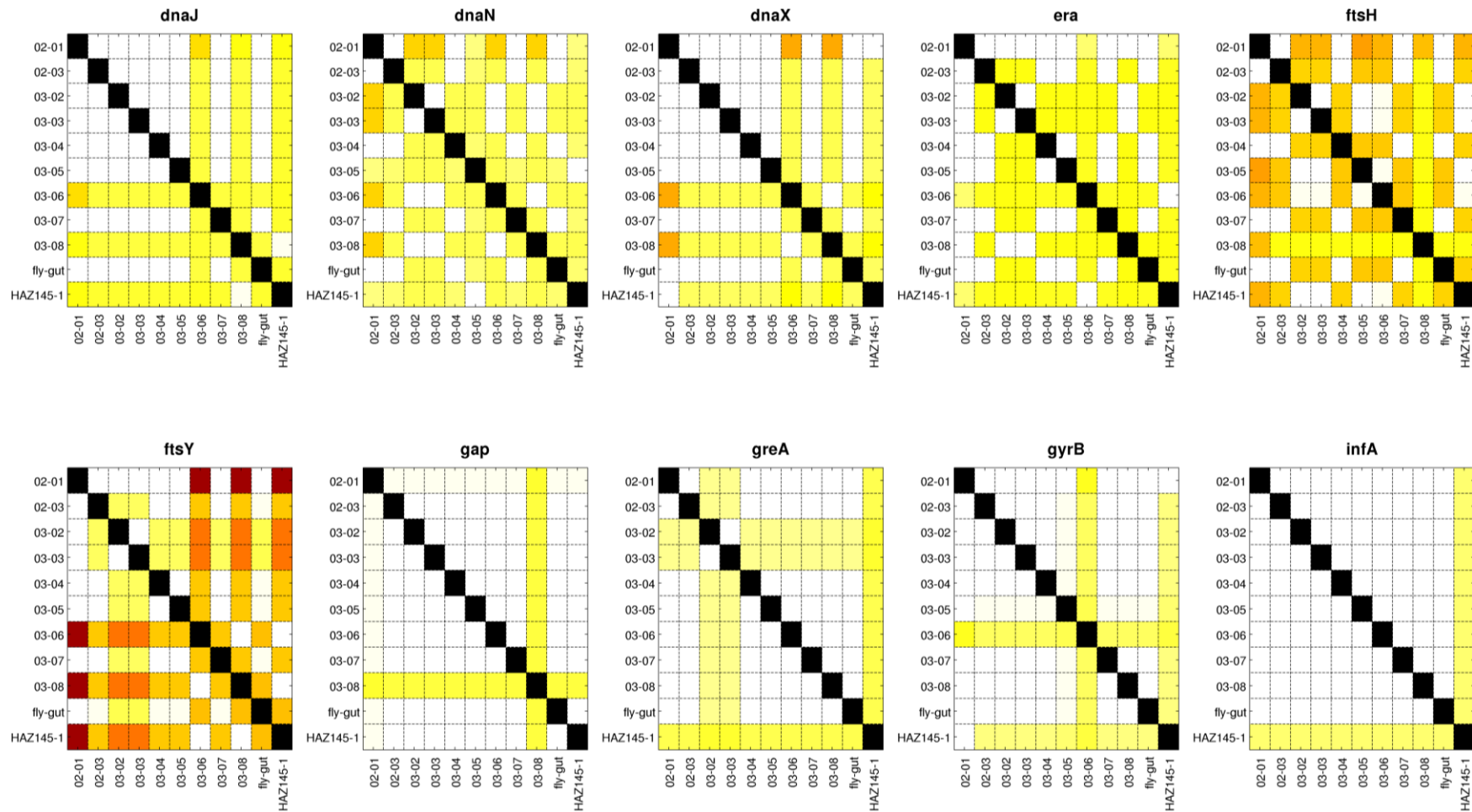
Supplementary Figure 2

Heatmaps illustrating the percentage of identity (Blastn value) between the 10 newly sequenced *M. arginini* strains and the HAZ145 reference genome. In the figure, genes *arcA*, *argF*, *aspS*, *atpD*, *atpE*, *atpG*, *cmk*, *def*, *deoD*, *dnaB* are represented. A representative set of genes can be found in Figure 4 of the main text



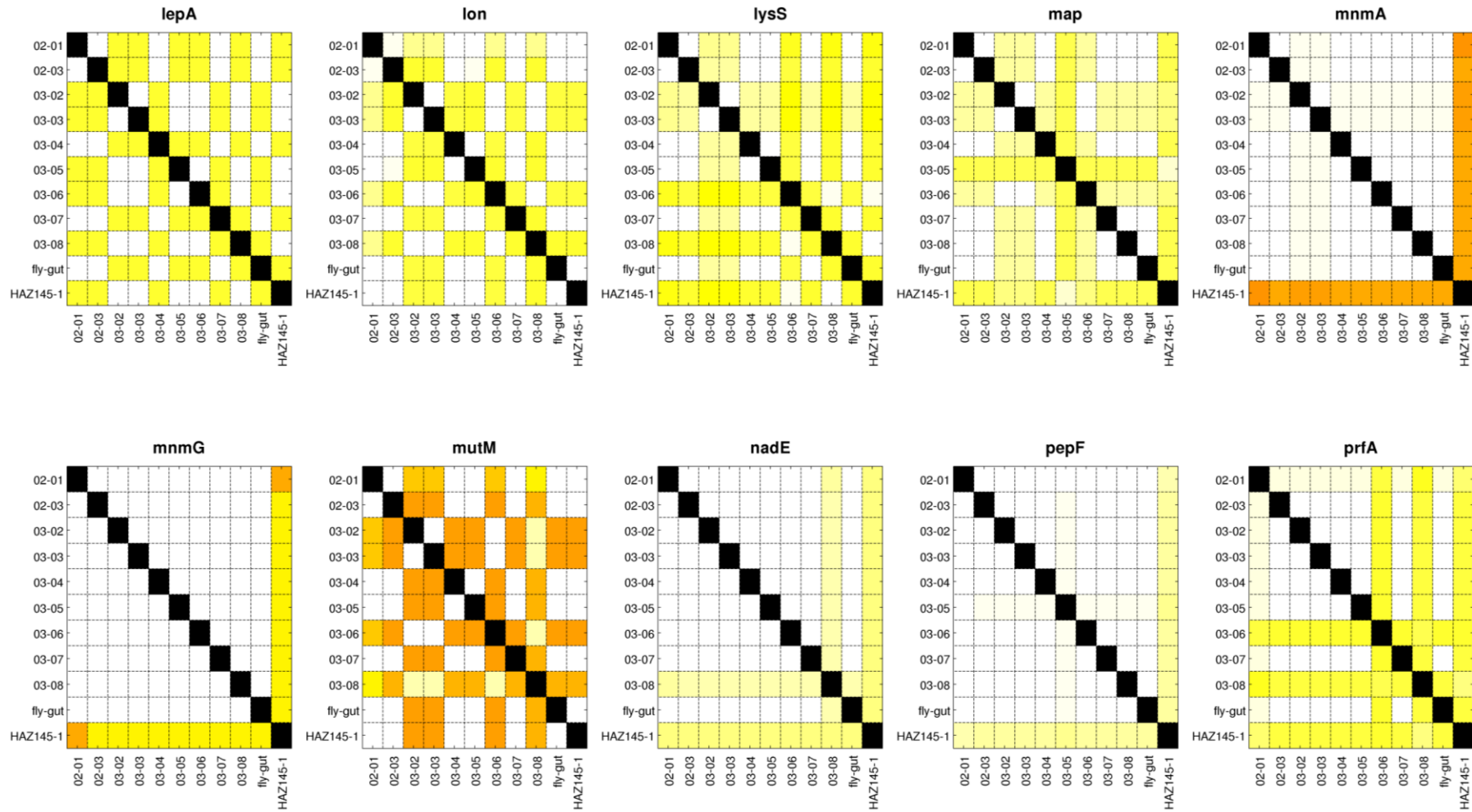
Supplementary Figure 3

Heatmaps illustrating the percentage of identity (Blastn value) between the 10 newly sequenced *M. arginini* strains and the HAZ145 reference genome. In the figure, genes *dnaJ*, *dnaN*, *dnaX*, *era*, *ftsH*, *ftsY*, *gap*, *greA*, *gyrB*, *infA* are represented. A representative set of genes can be found in Figure 4 of the main text



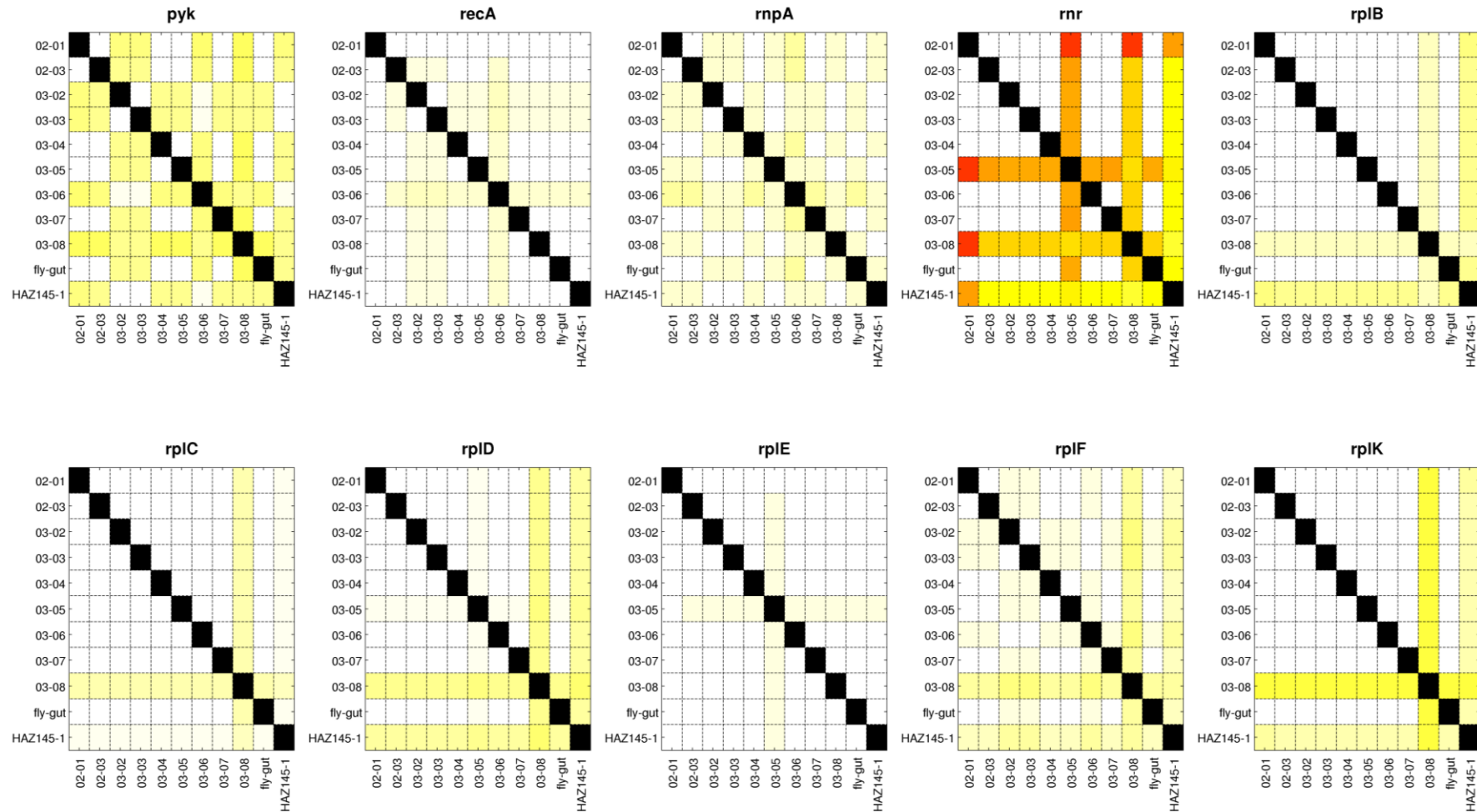
Supplementary Figure 4

Heatmaps illustrating the percentage of identity (Blastn value) between the 10 newly sequenced *M. arginini* strains and the HAZ145 reference genome. In the figure, genes *lepA*, *lon*, *lysS*, *map*, *mnmA*, *mnmG*, *mutM*, *nadE*, *pepF*, *prfA* are represented. A representative set of genes can be found in Figure 4 of the main text



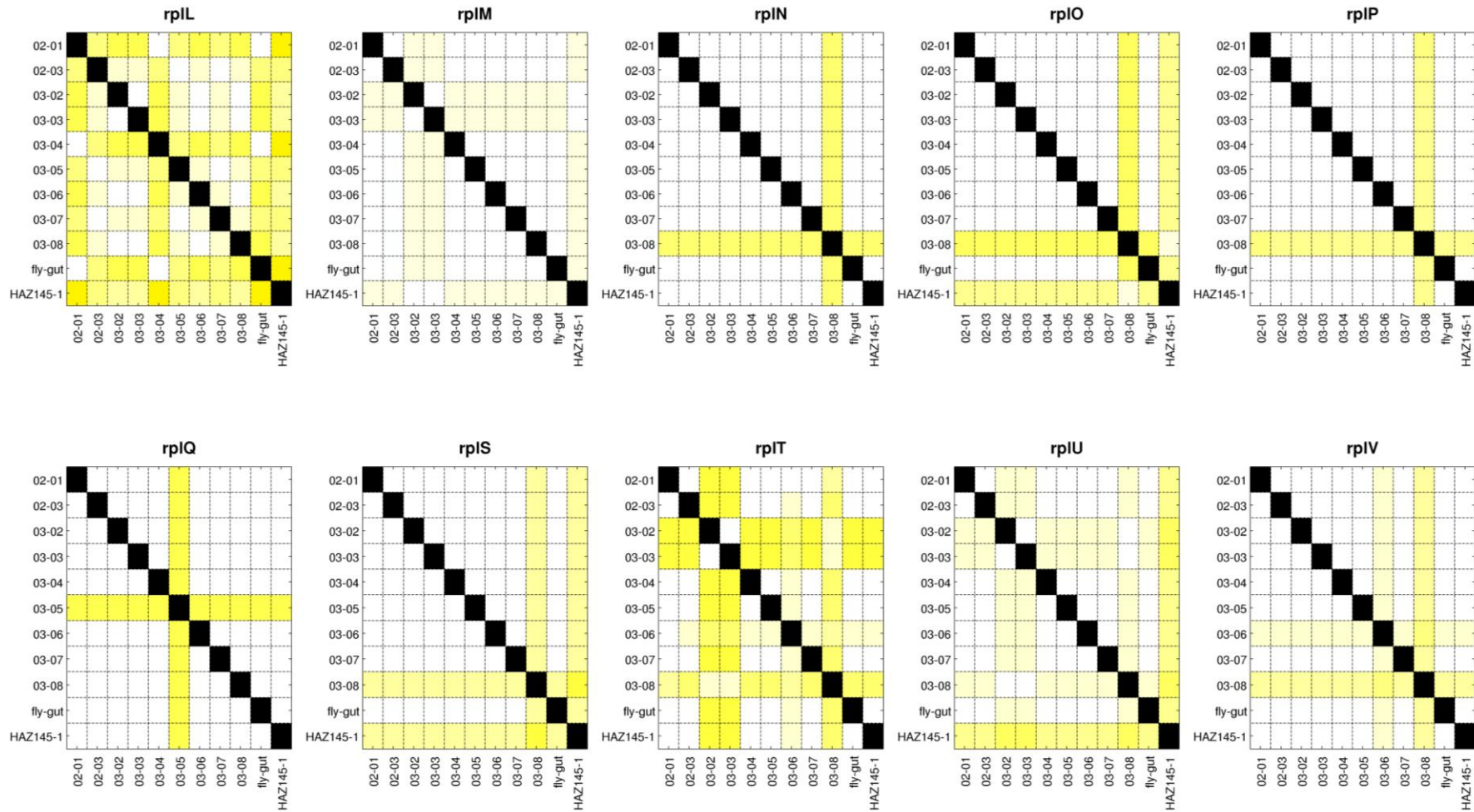
Supplementary Figure 5

Heatmaps illustrating the percentage of identity (Blastn value) between the 10 newly sequenced *M. arginini* strains and the HAZ145 reference genome. In the figure, genes *pyk*, *recA*, *rnpA*, *rrn*, *rplB*, *rplC*, *rplD*, *rplE*, *rplF*, *rplK* are represented. A representative set of genes can be found in Figure 4 of the main text



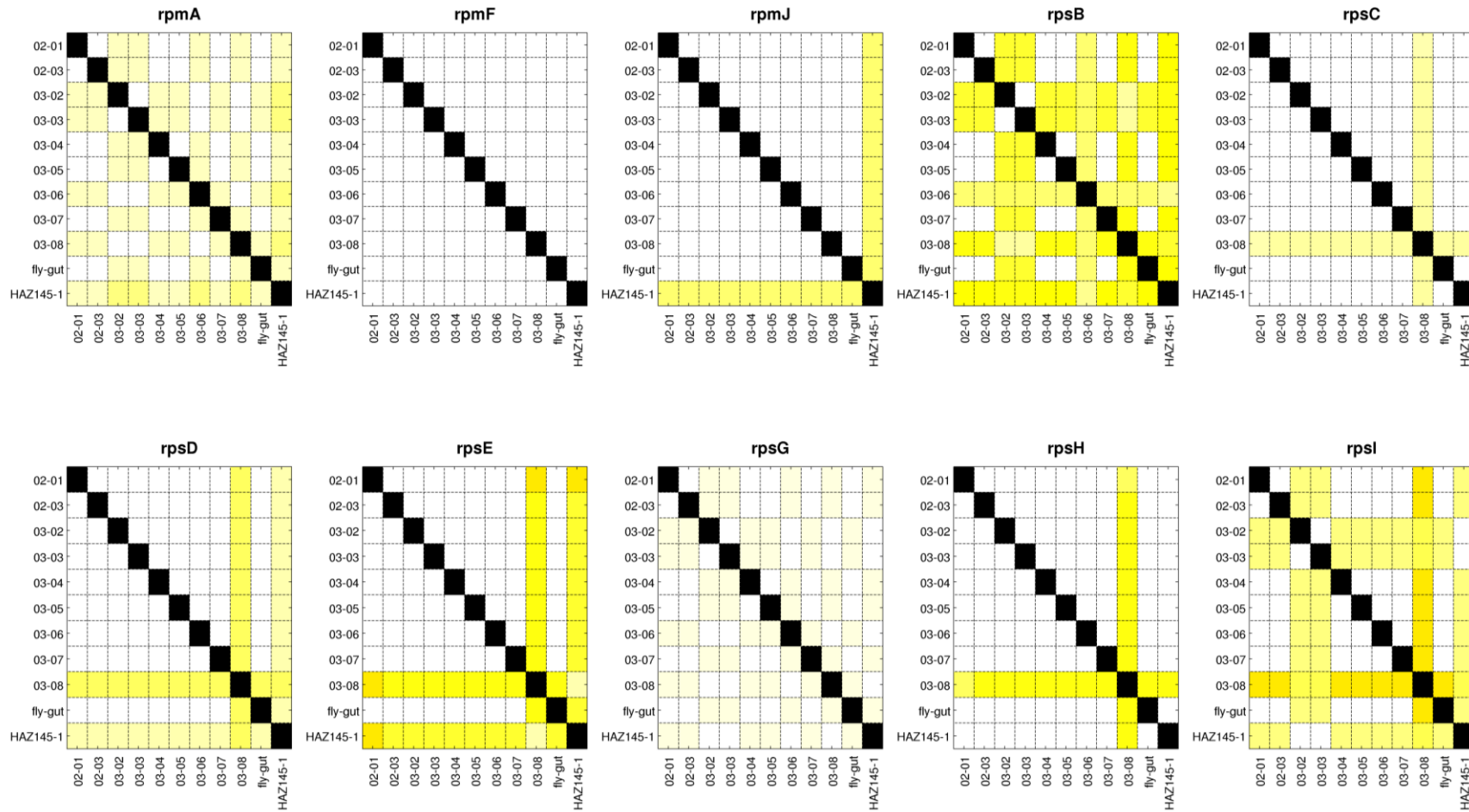
Supplementary Figure 6

Heatmaps illustrating the percentage of identity (Blastn value) between the 10 newly sequenced *M. arginini* strains and the HAZ145 reference genome. In the figure, genes rplL, rplM, rplN, rplO, rplP, rplQ, rplS, rplT, rplU, rplV are represented. A representative set of genes can be found in Figure 4 of the main text



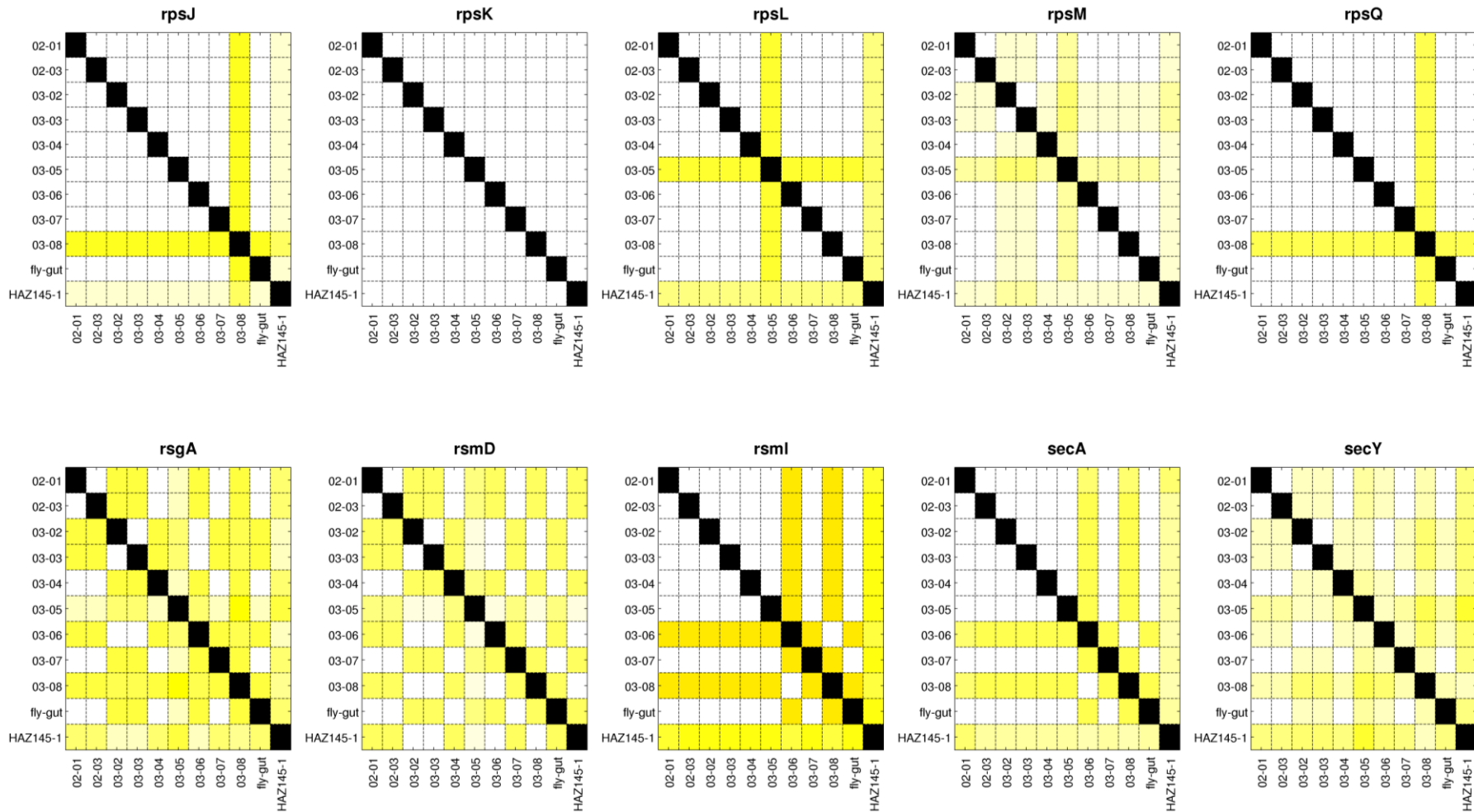
Supplementary Figure 7

Heatmaps illustrating the percentage of identity (Blastn value) between the 10 newly sequenced *M. arginini* strains and the HAZ145 reference genome. In the figure, genes rpmA, rpmF, rpmJ, rpsB, rpsC, rpsD, rpsE, rpsG, rpsH, rpsI are represented. A representative set of genes can be found in Figure 4 of the main text



Supplementary Figure 8

Heatmaps illustrating the percentage of identity (Blastn value) between the 10 newly sequenced *M. arginini* strains and the HAZ145 reference genome. In the figure, genes *rpsJ*, *rpsK*, *rpsL*, *rpsM*, *rpsQ*, *rsgA*, *rsmD*, *rsmI*, *secA*, *secY* are represented. A representative set of genes can be found in Figure 4 of the main text



Supplementary Figure 9

Heatmaps illustrating the percentage of identity (Blastn value) between the 10 newly sequenced *M. arginini* strains and the HAZ145 reference genome. In the figure, genes serS, trmD, truB, tuf, upp, ybeY are represented. A representative set of genes can be found in Figure 4 of the main text

