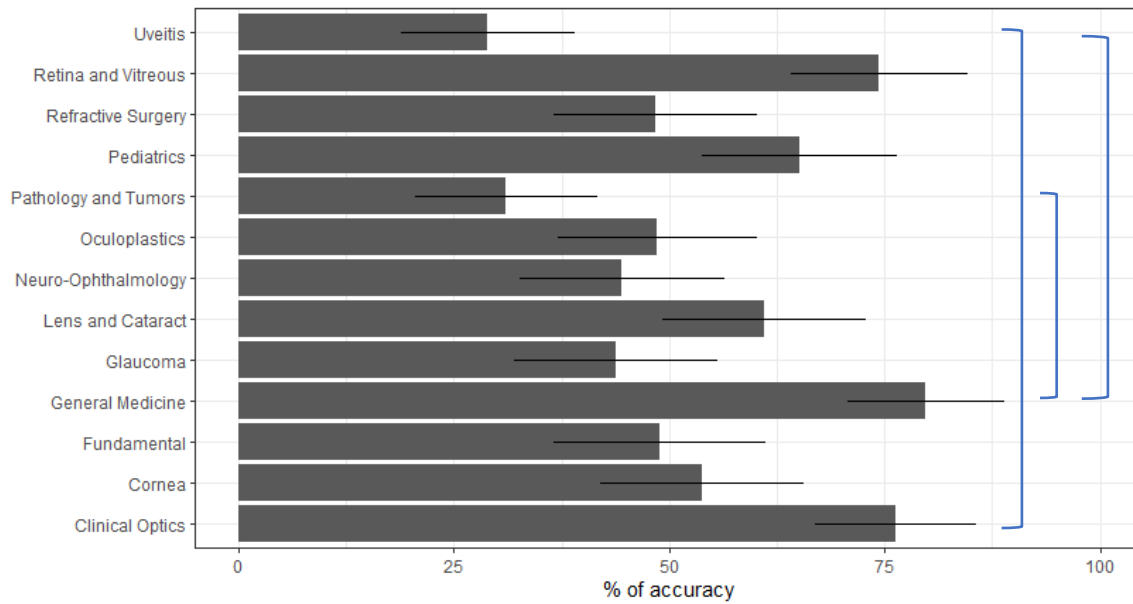
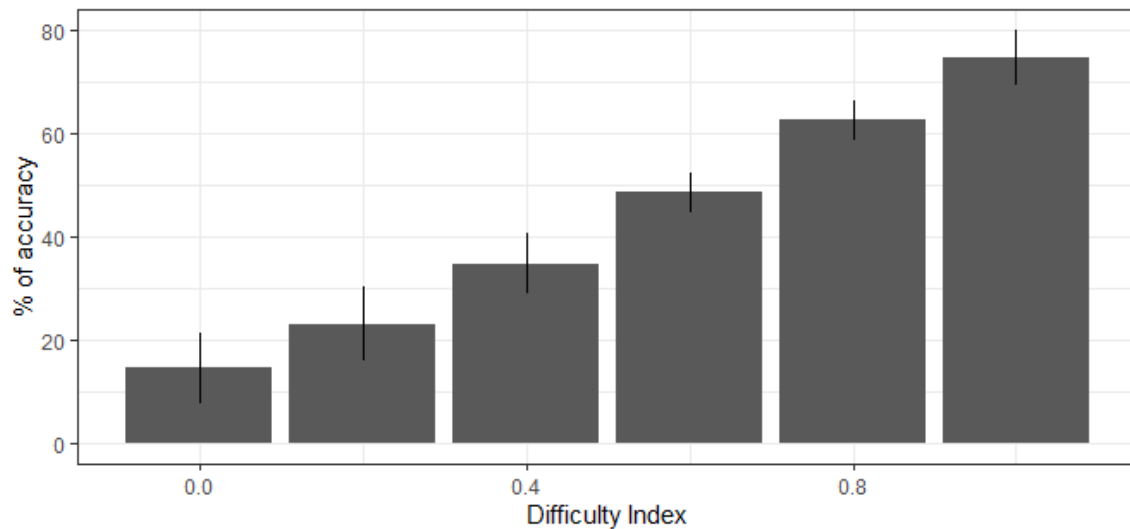


**Supplemental Figure 4: Post hoc analysis using Tukey’s test to isolate the effect of exam section, cognitive level and difficulty index using the BCSC questions for the legacy model. (A)** Bar plot of the percentage of accuracy by exam section. The blue square brackets identify the significant differences. The significant contrasts were the following: Clinical Optics – Uveitis (estimate 0.473,  $p = 0.042$ ), General Medicine - Pathology and Tumors (estimate 0.487,  $p=0.029$ ) and General Medicine – Uveitis (estimate 0.508,  $p = 0.013$ ). **(B)** Predicted percentage of accuracy by difficulty index. Accuracy increased with increasing difficulty index (easier questions). **(C)** Predicted percentage of accuracy comparing Low and High cognitive levels. Higher accuracy was associated to Low cognitive level questions.

**(A)**



**(B)**



(c)

