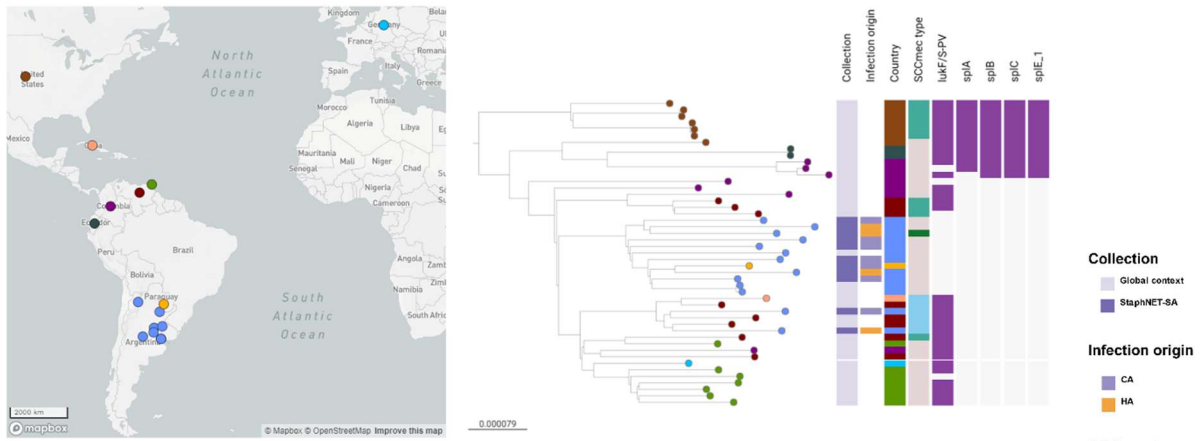


**Supplementary Figure 5.** Geographic distribution of USA300 Early Branching clades. Leaf nodes are coloured by Country. Coloured blocks represent the presence of an intact genetic determinant: virulence gene (violet). Country and SCCmec type colours are described in the legend. For both trees, the outgroup is omitted, and scale bars represent the number of single nucleotide polymorphisms (SNPs) per variable site.

**A**



**B**

