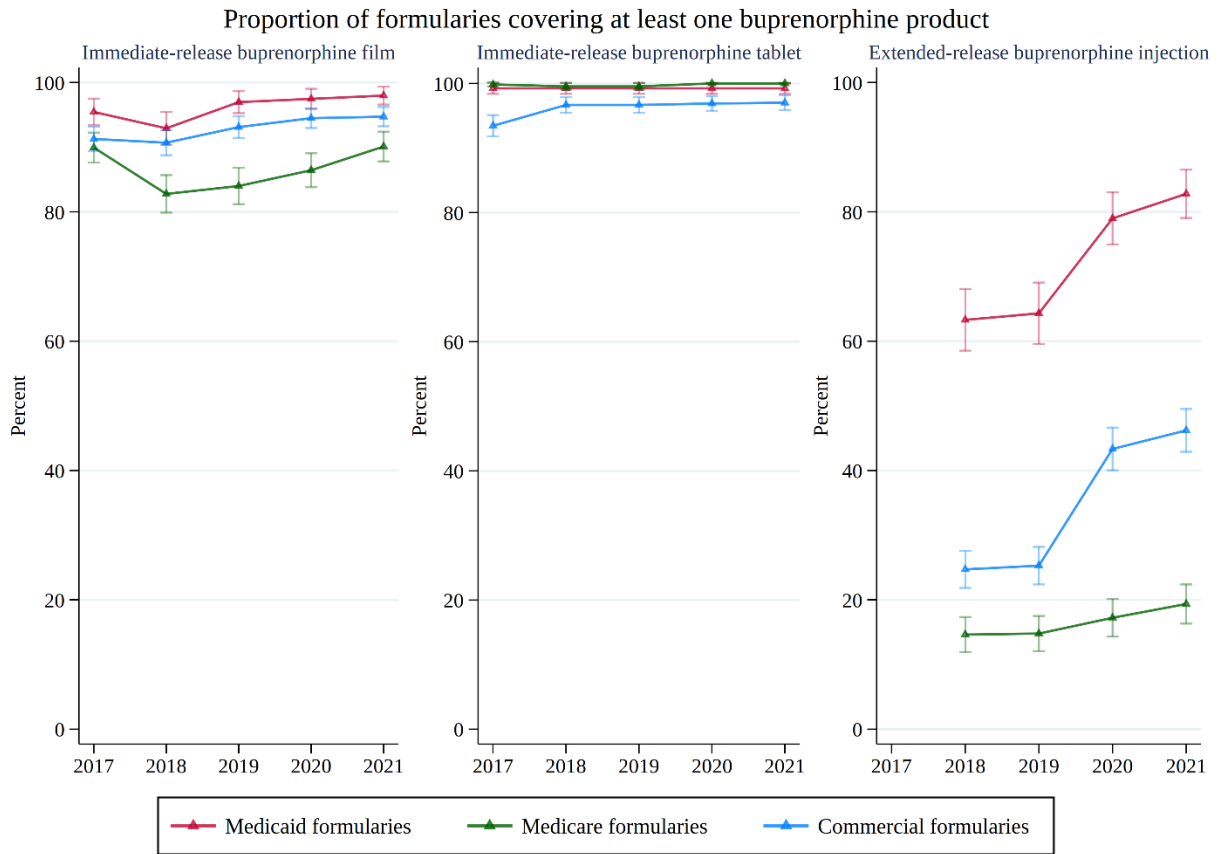


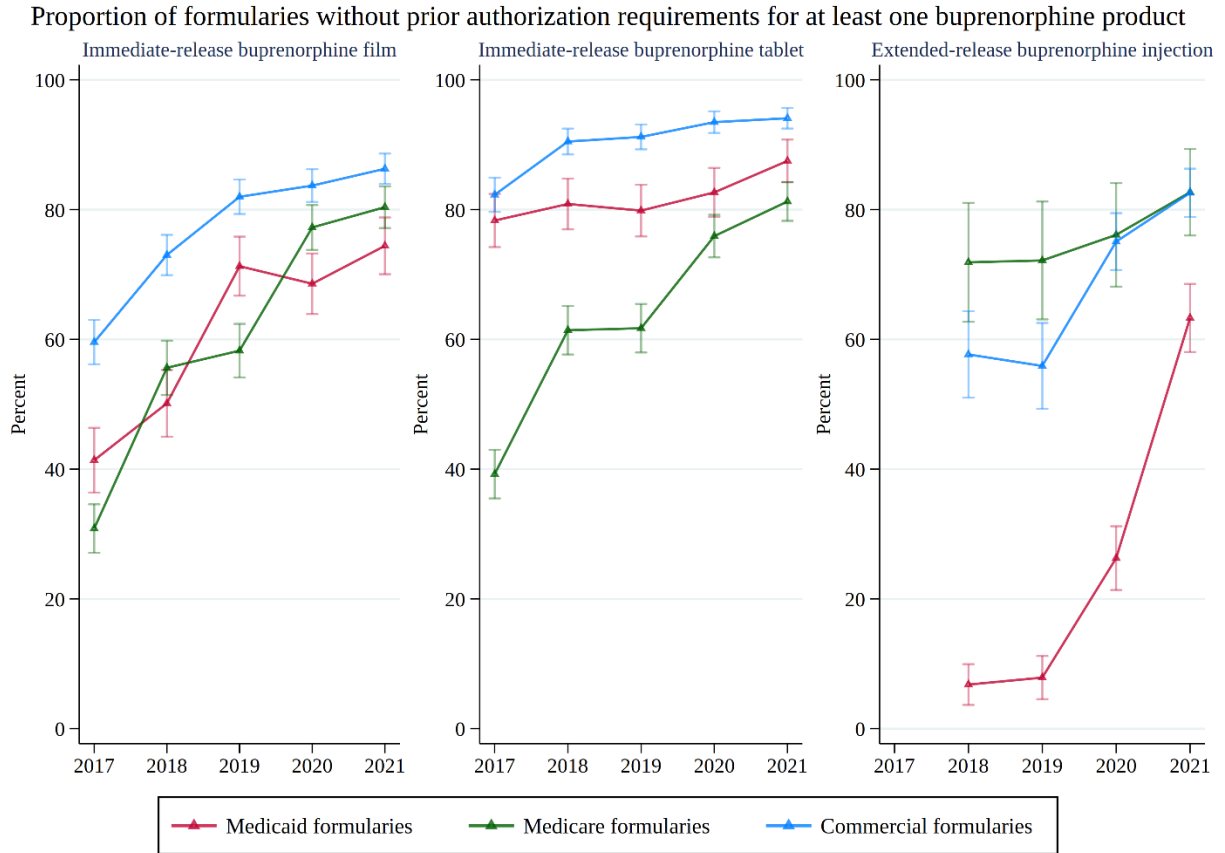
APPENDIX

Appendix 1 - Coverage for buprenorphine products in Medicaid, Medicare Advantage, and commercial formularies, 2017-2021.



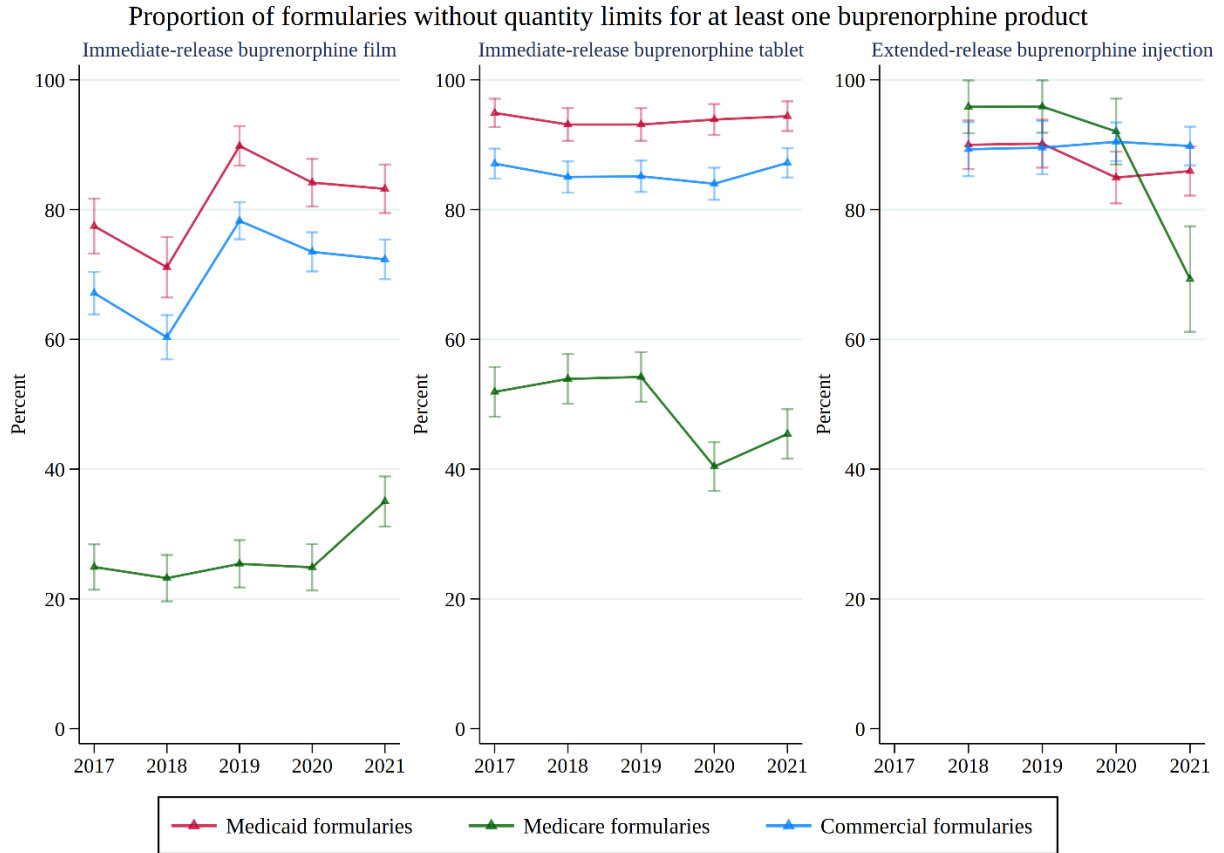
SOURCE [Authors analysis of data derive from 395 Medicaid formularies, 656 Medicare Advantage formularies, and 870 commercial formularies included in the Ideon database throughout 2017-2021.] NOTES [The bars present the 95% confidence intervals for the proportions].

Appendix 2 - Prior authorization requirements for buprenorphine products in Medicaid, Medicare Advantage, and commercial formularies, 2017-2021.



SOURCE [Authors analysis of data derive from 395 Medicaid formularies, 656 Medicare Advantage formularies, and 870 commercial formularies included in the Ideon database throughout 2017-2021.] NOTES [The denominators for the proportions are the numbers of formularies that covered at least one immediate-release buprenorphine product and the number that covered extended-release buprenorphine injection. The bars present the 95% confidence intervals for the proportions].

Appendix 3 – Quantity limits for buprenorphine products in Medicaid, Medicare Advantage, and commercial formularies, 2017-2021.



SOURCE [Authors analysis of data derive from 395 Medicaid formularies, 656 Medicare Advantage formularies, and 870 commercial formularies included in the Ideon database throughout 2017-2021.] NOTES [The denominators for the proportions are the numbers of formularies that covered at least one immediate-release buprenorphine product and the number that covered extended-release buprenorphine injection. The bars present the 95% confidence intervals for the proportions].

Appendix 4 - Names of formularies included in the sample

To provide readers with context on the nature of our sample, the full list of 1921 formularies in this study is listed below.

| 395 MEDICAID FORMULARIES | State | 656 MEDICARE ADVANTAGE FORMULARIES | 870 COMMERCIAL FORMULARIES |
|--|--------------|---|--|
| Advicare Medicaid Formulary | | AARP Medicare Rx Walgreens | 4-D Management Systems |
| Aetna Better Health Illinois | Illinois | AARP Medicare Complete Choice/Choice Regional/ Plan1 & 2/ Plan 2 Regional | Advanced Control Formulary for Teachers Health Trust |
| Aetna Better Health Illinois FHP/ACA | Illinois | AARP Medicare Complete Mosaic | Adventist Health |
| Aetna Better Health of Kentucky | Kentucky | AARP Medicare Complete Plan 1-8 | Aetna 5 Tier HIX |
| Aetna Better Health of Louisiana | Louisiana | AARP Medicare Complete Plus/ Plan 1 & 2 | Aetna Commercial Fully Insured 2 Tier Closed |
| Aetna Better Health of Michigan | Michigan | AARP Medicare Complete Secure Horizons Plan 3 | Aetna Commercial Fully Insured 2 Tier Open |
| Aetna Better Health of MO | Missouri | AARP Medicare Complete Secure Horizons/Secure Horizons Plan 1,2,4/Premier/Value | Aetna Commercial Fully Insured 3 Tier |
| Aetna Better Health of Nebraska | Nebraska | AARP Medicare Complete/Access/Focus/Premier/Profile/Value | Aetna Commercial Fully Insured 4 Tier |
| Aetna Better Health of New Jersey | New Jersey | AARP Medicare Rx Preferred | Aetna Commercial Fully Insured 5 Tier |
| Aetna Better Health of Texas CHIP | Texas | AARP Medicare Rx Saver Plus | Aetna Commercial Self Insured 2 Tier Closed |
| Aetna Better Health of Virginia | Virginia | AARP Medicare Rx Saver Plus FL-NY | Aetna Commercial Self Insured 2 Tier Open |
| Aetna Better Health Pennsylvania | Pennsylvania | AARP Medicare Rx Walgreens FL NY | Aetna Commercial Self Insured 3 Tier |
| Aetna Better Health Texas STAR | Texas | Absolute Total Care | Aetna Commercial Self Insured 4 Tier |
| Affinity Health Plan Child Health Plus | | Absolute Total Care MMP | Aetna Commercial Self Insured 5 Tier |
| Affinity Health Plan Managed Medicaid | | Access Medicare | Aetna HIX Florida |
| Alabama State Medicaid | Alabama | Access Medicare Pearl | Aetna Innovation Health Leap HIX |
| Alameda Alliance for Health Group Care | | Advantage Health Solutions 4 Tier with Specialty | Aetna Leap HIX |
| Alameda Alliance for Health Medi-Cal | | Advantage-Plus Meridian | Aetna Premier 2 Tier |
| Alaska State Medicaid | Alaska | Advicare Advocate MMP | Aetna Premier 3 Tier |
| AllCare (OHP) | | Aetna Better Health FIDA Plan | Aetna Premier 4 Tier |
| AlphaCare of New York | New York | Aetna Better Health IL Premier Plan MMP | Aetna Premier 5 Tier |
| Amerigroup Community Care Georgia | Georgia | Aetna Better Health MI Premier Plan MMP | Aetna Premier Plus 2 Tier |
| Amerigroup Community Care Louisiana | Louisiana | Aetna Better Health MyCare Ohio MMP | Aetna Premier Plus 3 Tier |
| Amerigroup Community Care Maryland | Maryland | Aetna Medicare B1 Formulary | Aetna Premier Plus 4 Tier |
| Amerigroup Community Care Nevada | Nevada | Aetna Medicare B2 Formulary | Aetna Premier Plus 5 Tier |
| Amerigroup Community Care New Jersey | New Jersey | Aetna Medicare B3 Formulary | Aetna Value 2 Tier Closed |
| Amerigroup Community Care Tennessee | Tennessee | Aetna Medicare B4 Formulary | Aetna Value 2 Tier Open |
| Amerigroup Florida Healthy Kids | Florida | Aetna Medicare B5 Formulary | Aetna Value 3 Tier |
| Amerigroup Florida MMA | Florida | Aetna Medicare Formulary A1 | Aetna Value 4 Tier |
| Amerigroup Iowa Health Link | Iowa | AFC Care Rx/AFC Special Care Rx | Aetna Value 5 Tier |
| Amerigroup Kansas - KANCARE | Kansas | Affinity Medicare Ultimate/Solutions/Passport Plans | Aetna Value Plus 2 Tier |
| Amerigroup Texas STAR | Texas | AgeRight Advantage Health Plan HMO-SNP | Aetna Value Plus 3 Tier |
| Amerigroup Texas STAR+PLUS | Texas | AgeWell New York FIDA | Aetna Value Plus 4 Tier |
| Amerigroup TX CHIP | Texas | AgeWell NY BeWell/FeelWell/CareWell | Aetna Value Plus 5 Tier |

| 395 MEDICAID FORMULARIES | State | 656 MEDICARE ADVANTAGE FORMULARIES | 870 COMMERCIAL FORMULARIES |
|---|----------------|--|---|
| Amerigroup Washington Apple Health | Washington | AgeWell NY LiveWell | Aetna Value Plus Small Group 3 Tier |
| Amida Care | | Akamai Advantage | Aetna Value Plus Small Group 3 Tier NJ |
| Amida Care Plus | | Akamai Advantage Dual Care | Aetna Value Plus Small Group 4 Tier |
| Anthem BCBS BadgerCare Plus | | Alignment Health Plan CalPlus Medicare | Aetna Value Plus Small Group 4 Tier MD and WV |
| Anthem BlueCross BlueShield Kentucky Medicaid | Kentucky | Alignment Health Plan Medicare | Aetna Value Plus Small Group 5 Tier |
| Anthem BlueCross California Medicaid | California | AllCare Advantage | Aetna Value Plus Small Group 5 Tier DE |
| Anthem Healthkeepers Plus | | Allegian Advantage | Aetna Value Plus Small Group 5 Tier FL |
| Anthem HIP Basic Plan | | Aloha Care Quest | Aetna Value Small Group 5 Tier |
| Anthem HIP Plus Plan | | AlohaCare AdvantagePlus | Affinity Essential Qualified Health Plan |
| Anthem HIP State Basic Plan | | AlphaCare Signature FIDA Plan | AFSCME Council 31 |
| Anthem HIP State Plus Plan | | Altius Health Plans B2 Formulary | Allegian Choice HIX |
| Anthem Hoosier Care Connect | Indiana | America's 1st Choice Insurance Company | Allegian Health Plans 4-Tier Closed |
| Anthem Indiana Hoosier Healthwise | Indiana | Amerigroup STAR+PLUS MMP | Alliant Energy 2 Tier |
| Anthem SSI Medicaid | | AmeriHealth 65 Preferred HMO | Alliant Energy 3 Tier |
| Arbor Health Plan | | AmeriHealth Caritas District of Columbia | Alliant Health Plans 3 Tier Formulary |
| Arizona State Medicaid Fee For Service | Arizona | AmeriHealth Caritas Iowa Health Link | Alliant Health Plans Essential Health Benefits Formulary |
| Arkansas Medicaid | Arkansas | AmeriHealth Caritas Louisiana | Alliant Plan Plus/Select 2 Tier |
| BCBS New Mexico Centennial Care | New Mexico | AmeriHealth Caritas Pennsylvania | Ambetter from Buckeye Community Health Plan HIX OH |
| BCBS of Minnesota Medicaid GenRx | Minnesota | AmeriHealth Caritas VIP Care Plus MMP | Ambetter from CeltiCare Health Plan |
| BCBS of Montana Help Plan | Montana | AmeriHealth Northeast | Ambetter from Coordinated Care HIX |
| BCBS Tennessee Limited Formulary | Tennessee | AmeriHealth VIP Care | Ambetter from Magnolia Health Plan |
| BCBS Western New York Medicaid | New York | Amerivantage ESRD - NJ | Ambetter from MHS Health Wisconsin HIX |
| Better Health MMA | | Amerivantage ESRD- TX | Ambetter from MHS Indiana HIX |
| Blue Cross and Blue Shield of Texas STAR | Texas | Amerivantage Medicare Advantage | Ambetter from Peach State Health Plan HIX |
| Blue Cross Blue Shield of Texas CHIP | Texas | Amida Care Advantage | Ambetter from Sunshine Health HIX |
| Blue Cross Community FHP/ACA | | Anthem Blue Cross Cal MediConnect Plan MMP | Ambetter from Superior Health Plan HIX |
| Blue Cross Community ICP | | Anthem Blue MedicareRx Plus | Ambetter IlliniCare HIX |
| Blue Cross Community MMAI | | Anthem Blue MedicareRx Premier | Ambetter NH HIX |
| Blue Cross Complete | | Anthem HealthKeepers MMP | Ambetter of Arkansas HIX |
| BlueChoice Health Plan of South Carolina Medicaid | South Carolina | Anthem MediBlue Access | Ameriben Employees |
| BlueCross BlueShield of Tennessee TennCare | Tennessee | Anthem MediBlue Access Enhanced | American Casino and Entertainment Properties |
| BlueCross of Northeastern PA CHIP | Pennsylvania | Anthem MediBlue Care To You | American Health Care |
| BMC Mass Health | Massachusetts | Anthem MediBlue Coordination Plus | American Health Care Garden Grove Unified School District |
| Buckeye Community Health Plan | | Anthem MediBlue Coordination Plus - CA | American Health Care Pinnacle |
| California Health and Wellness | California | Anthem MediBlue Dual Advantage | Anthem BC GenRX |
| CalOptima Medi-Cal | | Anthem MediBlue ESRD | Anthem BCBS HIX NV |
| CalViva Health Medi-Cal | | Anthem MediBlue Essential | Anthem Blue Cross Generic Premium |
| Care 1st Health Plan Medi-Cal | | Anthem MediBlue Local/Diabetes/COPD | Anthem BlueCross BlueShield HIX CO |
| Care 1st HealthPlan Arizona | | Anthem MediBlue Plus | Anthem BlueCross BlueShield HIX CT |
| Care Wisconsin SSI Medicaid | Wisconsin | Anthem MediBlue Plus - CA | Anthem BlueCross BlueShield HIX IN |
| CareOregon (OHP) | Oregon | Anthem MediBlue Select | Anthem BlueCross BlueShield HIX KY |
| CarePlus National 5 w/ Medicaid Medications | | Anthem MediBlue Select - CA | Anthem BlueCross BlueShield HIX ME |
| CareSource Ohio Medicaid | Ohio | Anthem MediBlue SmartFit | Anthem BlueCross BlueShield HIX MO |
| Cascade Comprehensive Care HMO Medicaid | | Apollo, Apollo at Home, and Olympus Constellation Health | Anthem BlueCross BlueShield HIX NH |
| CDPHP Medicaid Select Plan and Family Health Plus | | Archcare Advantage | Anthem BlueCross BlueShield HIX OH |
| CeltiCare Health CarePlus | | Arkansas Blue Cross Blue Shield Health Advantage Value | Anthem BlueCross BlueShield HIX VA |
| CenCal Health | | Ascension Health | Anthem BlueCross BlueShield HIX WI |

| 395 MEDICAID FORMULARIES | State | 656 MEDICARE ADVANTAGE FORMULARIES | 870 COMMERCIAL FORMULARIES |
|--|---------------|--|--|
| Cenpatco Integrated Care | | Aspire Health Plan Advantage and Advantage Plus | Anthem BlueCross HIX CA |
| Cenpatco Integrated Care Behavioral Health | | Asuris Northwest Health Medicare | Anthem COVA Care |
| Central California Alliance For Health Medi-Cal | California | Asuris TruAdvantage + Rx Classic PPO + Rx Enhanced PPO | Anthem Four Tier |
| Childrens Community Health Plan BadgerCare Plus | | ATRIO Bronze Silver and Gold Rx | Anthem National Closed |
| Childrens Health Insurance Program Mississippi | Mississippi | ATRIO Special Needs Plan | Anthem Three Tier |
| Childrens Medical Services Network Florida MMA Specialty | Florida | Aurora Special Needs Plan | Appvion Formulary |
| CHP+ offered by Colorado Access | Colorado | AvMed Medicare Choice | Arise Health Plan |
| CHP+ State Managed Care Network Formulary | | Baptist Health Plan Advantage | Arizona Department of Health Services (ADHS) |
| CHRISTUS Health CHIP | | Basic Blue Rx PDP | Arizona FCU |
| CHRISTUS Health Plan STAR | | BC of Idaho True Blue & Special Needs Plan | Arizona Local Government Employee Benefit Trust |
| Clear Health Alliance MMA Specialty | | BC of Idaho TrueBlueRx Option I and II Performance | Arizona Metropolitan Trust |
| Colorado Access RCCO | Colorado | BCBS Arizona Blue MedicareRx Value | Arkansas BlueCross BlueShield Formulary One (Standard) |
| Colorado Community Health Alliance RCCO | Colorado | BCBS FL BlueMedicare Advantage Plan | Arkansas BlueCross BlueShield HIX |
| Colorado State Medicaid | Colorado | BCBS FL BlueMedicare Preferred | Arkansas State and Public School Employees |
| Community Care Central Colorado RCCO | Colorado | BCBS Kansas City Blue Medicare Advantage Complete and Plus Plans | ASR Corporation Employees |
| Community First Health Plans Texas STAR | Texas | BCBS Massachusetts Medicare Advantage | ATRIO Marketplace HIX OR |
| Community First Health Plans TX CHIP | Texas | BCBS Michigan Medicare Plus Blue PPO | AultCare |
| Community Health Choice CHIP | | BCBS Michigan Prescription Blue PDP Options A & B | AultCare MarketPlace HIX OH |
| Community Health Choice STAR | | BCBS NC Blue Medicare Enhanced | AultCare MarketPlace HIX OH Closed |
| Community Health Group Medi-Cal CompCare BadgerCare Plus | | BCBS NC Blue Medicare Essential | Auto Wares Group |
| CompCare SSI Medicaid | | BCBS NC Blue Medicare Rx Enhanced | Avera Health Plan HIX |
| Comprehensive Medical and Dental Program (DES Foster Care) | | BCBS NC Blue Medicare Rx Standard | Avera Health Plans |
| | | BCBS NC Blue Medicare Standard | AvMed Engage and Empower Formulary |
| Connecticut Medicaid Husky A, C & D | Connecticut | BCBS Nebraska Medicare Advantage Core and Choice | AvMed Health Plans |
| Contra Costa Health Plan BHC | | BCBS of Kansas Blue MedicareRx Plus | AvMed Miami Dade County HMO Medication Formulary |
| Contra Costa Health Plan Medi-Cal | | BCBS of Kansas Blue MedicareRx Premier | Baptist Health Plan KY HIX |
| Cook Childrens Health Plan CHIP | | BCBS of Kansas Blue MedicareRx Value | Baptist Health Plan Master Preferred Four Tier |
| Cook Children's Health Plan STAR | | BCBS of Louisiana Blue Advantage | Baptist Health Plan Master Preferred Three Tier |
| Coordinated Care | | BCBS of Tennessee BlueAdvantage | BayCare Health System |
| County Medical Services Program (CMSP) | | BCBSGa Blue MedicareRx Plus | BC Northeastern PA |
| CountyCare Health Plan | | BCBSGa Blue MedicareRx Premier | BC OF IDAHO 2 TIER |
| CountyCare Health Plan ICP | | BCBSGa Blue MedicareRx Standard | BC OF IDAHO 3 Tier |
| Coventry Florida MMA | Florida | BCBSGa MediBlue Access | BC of Idaho Qualified Health Plans |
| Coventry Healthcare of Florida Healthy Kids | Florida | BCBSHP Dual Advantage | BCBS Alabama |
| CoventryCares of West Virginia | West Virginia | BCBSHP MediBlue Plus | BCBS FEP Basic |
| Crystal Run Health Plans Medicaid | | BCBSHP MediBlue Prime Select | BCBS FEP Standard |
| Dean Health Plan BadgerCare Plus | | BCN Advantage of Michigan | BCBS IL, MT, NM, OK, TX Generics Plus 4 Tier |

| 395 MEDICAID FORMULARIES | State | 656 MEDICARE ADVANTAGE FORMULARIES | 870 COMMERCIAL FORMULARIES |
|---|----------------|--|---|
| Delaware Medical Assistance Program(DMAP) | Delaware | Blue Advantage Complete and Premier | BCBS Illinois HMO |
| Denver Health Medicaid Choice & CHP+ | Colorado | Blue Cross Blue Shield of Minnesota Platinum Blue | BCBS Kansas City KS Blue & U HIX |
| Driscoll Childrens Health Plan CHIP | | Blue Cross Blue Shield of Minnesota SecureBlue | BCBS Kansas City MO 2 Tier |
| Driscoll Children's Health Plan STAR | | Blue Cross Medicare Advantage Basic IL/NM | BCBS Kansas City MO 3 Tier |
| El Paso First CHIP | | Blue Cross Medicare Advantage Dual Care | BCBS Kansas City MO Blue & U HIX |
| El Paso First Premier | | Blue Cross Medicare Rx Gold | BCBS Massachusetts 3 Tier HIX |
| Empire BlueCross BlueShield HealthPlus | | Blue Cross MedicareRx Plus | BCBS Massachusetts Three Tier |
| Empire Plan NY | New York | Blue Cross MedicareRx Standard | BCBS Massachusetts Two Tier |
| Excellus Child Health Plus | | Blue Medicare Advantage | BCBS MI 3 Tier Clinical Formulary |
| Excellus HMO Blue Option/Blue Choice Option | | Blue MedicareRx Enhanced | BCBS MI Preferred Rx 2T Closed |
| Fallon Community Health Plan MassHealth | Massachusetts | Blue MedicareRx Plus PDP | BCBS Michigan 5 Tier HIX |
| Fallon Health Weinberg | | Blue MedicareRx Premier | BCBS Mississippi 4 TIER |
| Family PACT (Planning, Access, Care and Treatment) | | Blue MedicareRx Premier - CT, MA, RI, VT | BCBS Mississippi Preferred PPO |
| FamilyCare Medicaid | | Blue MedicareRx Standard | BCBS Montana 3 Tier |
| Fidelis Care Child Health Plus | | Blue MedicareRx Value | BCBS of Alabama 4 Tier |
| First Choice by Select Health of South Carolina | South Carolina | Blue MedicareRx Value Plus - CT, MA, RI, VT | BCBS of Alabama Generics Plus 3 Tier |
| First Medical Health Plan | | Blue Rx Option II | BCBS of Alabama Generics Plus 4 Tier |
| First Medical Health Plan Medicaid | | Blue Shield 65 Plus Riverside/San Diego | BCBS of Alabama Generics Plus Closed |
| FirstCare Health Plan CHIP | | Blue Shield 65 Plus Sacramento | BCBS of Alabama PrimeChoice Essential HIX |
| FirstCare STAR | | Blue Shield of CA 65 Plus | BCBS of Alabama Standard HIX |
| Florida Medicaid | Florida | Blue Shield of CA 65 Plus Choice | BCBS of Alabama Tiered Generic |
| Geisinger Health Plan CHIP | | Blue Shield of CA 65 Plus LA/Orange/San Bernardino Counties | BCBS of Arizona HIX Portfolio & SimpleHealth |
| Geisinger Health Plan Family | | Blue Shield of CA Group PDP Medicare Rx & Group MAPD 65 Plus | BCBS of Arizona with Specialty |
| Georgia Department of Community Health | Georgia | Blue Shield of CA Medicare Basic (PDP) | BCBS of AZ HIX EverydayHealth, TrueHealth and Essential |
| Gold Coast Health Plan | | Blue Shield of CA Medicare Enhanced | BCBS of Georgia HIX GA |
| Group Health Cooperative Eau Claire SSI Medicaid | | BlueAdvantage Administrators of Arkansas | BCBS of Illinois |
| Group Health Cooperative of Eau Claire BadgerCare Plus | | BlueCare Plus | BCBS of Illinois Marketplace 5 Tier Generics Plus HIX |
| Group Health Cooperative of South Central Wisconsin BadgerCare Plus | Wisconsin | BlueCHIP for Medicare BCBS Rhode Island | BCBS of Kansas BlueCare HIX |
| Gundersen Lutheran Health Plan BadgerCare Plus | | BlueCross Rx Plus | BCBS of Kansas National/Select Three Tier |
| Harbor Health Plan | | BlueCross Rx Value | BCBS of Kansas National/Select Two Tier Closed |
| Harmony Medicaid Illinois | Illinois | BlueJourney Classic | BCBS of Kansas National/Select Two Tier Open |
| Health Alliance CONNECT FHP/ACA | | BlueJourney Prime/Premier/Value & Essential | BCBS of Louisiana 2 Tier |
| Health Net Medi-Cal | | BlueMedicare Advantage | BCBS of Louisiana 4 Tier |
| Health New England Be Healthy | | BlueRx Option I | BCBS of MI 2 Tier Clinical |
| Health Partners of Philadelphia | Pennsylvania | BMC HealthNet Plan Senior Care Options | BCBS of Michigan Preferred Rx 2 Tier Open |
| Health Plan of Nevada Medicaid | Nevada | Brand New Day | BCBS of Michigan Preferred Rx Three Tier |
| Health Plan of San Joaquin | | Bridgeway Arizona Long Term Care Plan (ALTCs) | BCBS of Minnesota FlexRx 2 Tier |
| Health Plan of San Mateo | | Bridgeway Health Solutions Advantage | BCBS of Minnesota FlexRx Closed |
| Health Tradition BadgerCare Plus | | Buckeye Community Health Plan - MyCare Ohio MMP | BCBS of Minnesota FlexRx Three Tier |
| Healthfirst Child Health Plus | | Buckeye Health Plan Advantage | BCBS of Minnesota GenRx 4 Tier |
| Healthfirst NY Medicaid Managed Care | New York | CalOptima OneCareConnect MMP | BCBS of Minnesota GenRx MN HIX |

| 395 MEDICAID FORMULARIES | State | 656 MEDICARE ADVANTAGE FORMULARIES | 870 COMMERCIAL FORMULARIES |
|--|---------------|--|--|
| HealthSpring STAR+PLUS | | Capital District Physicians Health Plan | BCBS of Montana EfficientRx/Generics Plus |
| Healthy U | | Capital District Physicians Health Plan Medicare Choices | BCBS of Montana Marketplace Generics Plus HIX |
| Hennepin Health Plan | | Care 1st Medicare Health Plan | BCBS of Nebraska Individual 5 Tier HIX |
| HIP Child Health Plus | | Care Improvement Dual Advantage/Silver Rx | BCBS of New Mexico |
| HIP Medicaid/FHPlus | | Care Improvement Plus Gold Rx/Medicare Advantage | BCBS of New Mexico 4 Tier |
| HMSA Children's Plan | | Care N Care Medicare Health Plan | BCBS of North Carolina Basic 5T Closed |
| HMSA Quest | | Care Wisconsin | BCBS of North Carolina Basic 5T Open |
| Humana CareSource Kentucky Medicaid | Kentucky | Care Wisconsin Medicare Dual Advantage HMO SNP | BCBS of North Carolina Basic 5T Open HIX |
| Humana Florida MMA | Florida | Care1st Cal MediConnect Plan MMP | BCBS of North Carolina Enhanced 4 Tier |
| Humana National 5 w/ Kidney Care | | CareMore | BCBS of North Carolina Enhanced 5 Tier |
| Humana National 5 w/ Kidney Care & Home Infusion | | CareMore Cal MediConnect MMP Plan | BCBS of North Dakota |
| Humana National 5 w/ Medicaid & ED Drugs | | CareOregon Advantage Plus | BCBS of North Dakota HIX |
| Humana National 5 w/ Medicaid Medications | | CareOregon Advantage Star | BCBS of Oklahoma 4 Tier |
| iCare BadgerCare Plus | | CarePlus Medicare Plus 5 with GC | BCBS of Oklahoma Marketplace 5 Tier Generics Plus |
| iCare SSI Medicaid | | CarePlus Medicare Plus-5 | BCBS of South Carolina Blue Option HIX |
| Idaho Medicaid | Idaho | CarePlus Medicare Plus-5 w/ ED Drugs | BCBS of South Carolina BlueEssentials HIX |
| IlliniCare Health Plan | | CarePlus Medicare Plus-5 w/ Medicaid & ED Drugs | BCBS of South Carolina Preferred |
| IlliniCare Health Plan FHP/ACA | | CarePlus National 5 Formulary | BCBS of South Carolina Preferred 3 Tier with Specialty |
| Illinois Medicaid | Illinois | CarePlus National 5 w/ Home Infusion | BCBS of South Carolina Try Generics |
| IMCare | | CarePlus-5 w/ Home Infusion | BCBS of Texas 3 Tier |
| Independent Health MediSource and CHIP | | CarePlus-5 w/ Maintenance Medications | BCBS of Texas 4 Tier |
| Indiana Medicaid | Indiana | CareSource IN Medicare | BCBS of Texas HIX 5 Tier Generics Plus |
| Inland Empire Health Plan Healthy Kids | | CareSource KY Medicare | BCBS of Vermont |
| Inland Empire Health Plan Medi-Cal | | CareSource MyCare Ohio MMP | BCBS of Western NY Formulary 1 |
| Integrated Community Health Partners RCCO | | CareSource OH Medicare | BCBS of Western NY Formulary 2 |
| InterCommunity Health Network CCO | | CCHP Senior Program | BCBS of Western NY Formulary 3/Exclusive Small Group |
| Iowa State Medicaid | Iowa | CCHP Senior Select Program (HMO SNP) | BCBS of Wyoming |
| Kaiser Permanente Mid-Atlantic Medicaid and FAMIS | | Centerlight Healthcare Direct | BCBS of Wyoming BlueSelect 3 Tier HIX |
| Kentucky Health Choices Medicaid | Kentucky | CenterLight Healthcare FIDA Plan | BCBS of Wyoming BlueSelect 4 Tier HIX |
| Kern Family Health Care Medi-Cal KidzPartners | | Centers Plan FIDA Care Complete | BCBS Tennessee HIX |
| LA Care Health Plan Healthy Kids | Louisiana | Centers Plan for Healthy Living Medicare | BCBS Tennessee Standard Formulary |
| LA Care Health Plan Medi-Cal | Louisiana | Centers Plan for Healthy Living Medicare SNP | BCN MI Blue Essentials |
| Louisiana Medicaid | Louisiana | Central Health Medicare Plan | BCN MI Custom 5T Formulary |
| Magellan Complete Care MMA Specialty | | CHRISTUS Health Plan Generations | BCN MI Custom Formulary Three Tier Closed |
| MaineCare | | Cigna Advantage Four Tier | BCN Michigan Custom Formulary 2 Tier |
| Managed Health Services BadgerCare Plus | | Cigna Advantage Three Tier with DRT | BCN Michigan Custom Formulary 2 Tier Open |
| Managed Health Services Indiana Hoosier Healthwise | | Cigna Advantage Three Tier without DRT | BCN Michigan HIX MI |
| Managed Health Services SSI Medicaid | | Cigna-HealthSpring Achieve | BeneCard PBF |
| Maricopa Managed Care Arizona | | Cigna-HealthSpring Achieve Plus/Preferred/Preferred Plus AZ Only | Black Hawk County 1 Formulary |
| Maryland State Medicaid | Maryland | Cigna-HealthSpring CarePlan MMP | Black Hawk County 2 Formulary |
| Masshealth Medicaid | Massachusetts | Cigna-HealthSpring CarePlan of Illinois MMP | Black Hawk County 3 Formulary |
| | | Cigna-HealthSpring Medicare Rx Secure | Blain |

| 395 MEDICAID FORMULARIES | State | 656 MEDICARE ADVANTAGE FORMULARIES | 870 COMMERCIAL FORMULARIES |
|--|--------------|--|---|
| McLaren Health Plan Medicaid | | Cigna-HealthSpring Medicare Rx Secure-Extra | Blue Care Network of Michigan FEHBP |
| MDwise HIP Basic Plan | | Cigna-HealthSpring Preferred/Preferred Plus/Premier/PreventativeCare | Blue Cross Blue Shield LA 3 Tier |
| MDwise HIP Plus Plan | | Cigna-HealthSpring Primary/TotalCare/Traditions | Blue Cross Blue Shield Nebraska Standard 4 Tier |
| MDwise HIP State Plan | | Cigna-HealthSpring SpecialCare of Illinois ICP | Blue Cross Blue Shield of Nebraska |
| MDwise HIP State Plus Plan | | ClearRiver Health Medicare | Blue Cross Blue Shield of Rhode Island 5 Tier |
| MDwise Hoosier Care Connect | Indiana | Clover Health Classic/CarePoint/Premier | Blue Cross Blue Shield of Rhode Island HIX |
| MDwise Hoosier Healthwise | Indiana | Clover Health Prestige | Blue Cross Blue Shield of Rhode Island Large Group 4 Tier |
| Medi Cal | | Commonwealth Care Alliance MMP | Blue Cross Blue Shield of Rhode Island Large Group 5 Tier |
| Medica Medicaid | | Commonwealth Care Alliance Senior Care Options | Blue Cross Blue Shield of Western NY HIX |
| Medical Assistance (Pennsylvania Medicaid) | Pennsylvania | CommuniCare Advantage Cal MediConnect MMP | Blue Selections Louisiana 5 Tier |
| Medical Assistance District of Columbia | DC | Community Care Alliance of IL Advantage | Blue Shield HIX California |
| MedStar Family Choice - DC Healthy Families | DC | Community Care Alliance of IL Complete | Blue Shield of California Plus Formulary |
| MedStar Family Choice Health Plan | | Community Care Alliance of IL Flex-Plan | Blue Shield of Northeastern NY HIX |
| Mercy Care Plan | | Community Care Alliance of Illinois | BlueChoice HealthPlan of South Carolina Tiered |
| Mercy Maricopa Integrated Care | | Community Care OK | BlueChoice/BlueChoice Plus |
| Mercy Maricopa Integrated Care Behavioral Health Drug List | | Community Care Partnership Program | BlueCross BlueShield of Georgia 3 Tier |
| MercyCare Health Plan WI BadgerCare Plus | | Community HealthFirst MA Special Needs Plan | BlueCross BlueShield of Georgia 4 Tier |
| MercyCare Health Plans 2-Tier | | Community HealthFirst Medicare Advantage Plans | BlueCross BlueShield of Oklahoma/BlueLincs |
| MercyCare Health Plans 3-Tier | | CommunityCare Advantage | BlueShield of Northeastern New York Formulary 1 |
| Meridian Health Plan of Illinois | Illinois | CommunityCare Senior Health Plan | BlueShield of Northeastern NY Formulary 2 |
| Meridian Health Plan of Illinois ICP | Illinois | ConnectiCare Medicare Advantage | BlueShield of Northeastern NY Formulary 3 |
| Meridian Health Plan of Michigan | Michigan | Coventry Health Care 5 Tier | BMC HealthNet ConnectorCare/Qualified Health Plan |
| MeridianCare | | Coventry Health Care B1 Formulary | Board of Pensions of the Presbyterian Church |
| MetroPlus Child Health Plus | | Coventry Health Care B2 Formulary | Board of Regents of The University System of Georgia |
| MetroPlus Health Plan New York Medicaid | New York | Coventry Health Care B3 Formulary | Bomarko Formulary |
| MHS Healthy Indiana HIP Basic | Indiana | Coventry Health Care B4 Formulary | Bridgespan Essential HIX ID |
| MHS Healthy Indiana HIP Plus | Indiana | CoxHealth MedicarePlus | Bridgespan Essential HIX OR |
| MHS Healthy Indiana HIP State | Indiana | Dean Advantage Assurance, Balance, Confidence | Bridgespan Essential HIX WA |
| MHS Healthy Indiana HIP State Plus | Indiana | Denver Health Medicare Choice | Bridgespan Standard Formulary HIX OR |
| Michigan Medicaid | Michigan | Denver Health Medicare Select | CalPERS |
| Minnesota Medicaid | Minnesota | Easy Choice Best | Capital Blue Cross 4 Tier |
| Mississippi Medicaid | Mississippi | Easy Choice Best Los Angeles/Orange County | Capital BlueCross |
| Missouri Care Health Plan | Missouri | Easy Choice Freedom | Capital BlueCross Closed |
| MMM Multi Health Medicaid | | Easy Choice Plus | Capital BlueCross HIX PA |
| MO Healthnet (formerly Missouri Medicaid) | Missouri | Elderplan FIDA Total Care | Capital Health Plan |
| Moda Health - Oregon Health Plan | Oregon | Elderplan Healthy Balance | Capital Health Plan FEHBP |
| Molina Healthcare of Florida MMA | Florida | Elderplan Medicare | Capital Health Plan Medicare Advantage |
| Molina Healthcare of Illinois | Illinois | EmblemHealth Medicare HMO | CareFirst Formulary 2 3 Tier |
| Molina Healthcare of Illinois FHP/ACA | Illinois | EmblemHealth National Drug Plan (PDP) Standard/Enhanced Formulary | CareFirst Formulary 2 4 Tier |

| 395 MEDICAID FORMULARIES | State | 656 MEDICARE ADVANTAGE FORMULARIES | 870 COMMERCIAL FORMULARIES |
|--|----------------|---|--|
| Molina Healthcare of Michigan | Michigan | EmblemHealth Premier Formulary | CareFirst Formulary 2 HIX |
| Molina Healthcare of New Mexico | New Mexico | EmblemHealth Select Formulary | CareSource Just4Me HIX IN |
| Molina Healthcare of Ohio | Ohio | EMI Health Educators Rx Advantage | CareSource Just4Me HIX KY |
| Molina Healthcare of Puerto Rico Medicaid | Puerto Rico | Empire Dual Advantage | CareSource Just4Me HIX OH |
| Molina Healthcare of South Carolina | South Carolina | Empire MediBlue Access | CareSource Just4Me HIX WV |
| Molina Healthcare of Texas CHIP | Texas | Empire MediBlue Choice | Cascade Die Casting |
| Molina Healthcare of Utah CHIP | Utah | Empire MediBlue Plus | Caterpillar Drug Formulary |
| Molina HealthCare of Utah Medicaid | Utah | EnvisionRx Plus Clear Choice | CDPHP Formulary 2 HIX NY |
| Molina Healthcare of WA | Washington | EnvisionRxPlus PDP | Central PA Teamsters |
| Molina Healthcare of Wisconsin BadgerCare Plus | Wisconsin | Eon Medicare Advantage | CHG Staffing |
| Molina Healthcare of Wisconsin SSI Medicaid | Wisconsin | Eon Medicare Advantage CSNP | Chinese Community Health Plan Commercial |
| Molina Healthcare Texas STAR | Texas | Erickson Advantage | Chinese Community Health Plan HIX |
| Molina Healthcare Texas STAR+PLUS | Texas | Essence | CHRISTUS Health Plan New Mexico HIX |
| Molina Medi-Cal | | Excellus Medicare | CHRISTUS Health Plan Texas HIX |
| Montana Medicaid | Montana | Excellus Medicare BluePlus | Cigna Generics Only |
| Montana Mental Health Services Plan | Montana | Express Scripts Basic with Advantage | Cigna Legacy Three Tier |
| MVP Option Child | | Express Scripts Basic with Advantage Plus | Cigna Performance Four Tier |
| Nebraska State Medicaid | Nebraska | Express Scripts High Performance with Advantage | Cigna Performance Three Tier |
| Neighborhood Health Plan Five Tier | | Express Scripts High Performance with Advantage Plus | Cigna Rx Essential 5-Tier HIX |
| Neighborhood Health Plan MassHealth | Massachusetts | Express Scripts Medicare Choice | Cigna Rx Plus HIX TX, GA, and TN |
| Neighborhood Health Plan of RI Rite Care | Rhode Island | Express Scripts Medicare Value Plan | Cigna Rx Premier HIX |
| Neighborhood Health Plan Three Tier | | Express Scripts National Preferred with Advantage | Cigna Standard Three Tier |
| Network Health Plan of Wisconsin BadgerCare Plus | Wisconsin | Express Scripts National Preferred with Advantage Plus | Cigna Value Three Tier with DRT |
| Network Health Plan of Wisconsin SSI Medicaid | Wisconsin | Fallon Senior Plan | Cigna Value Three Tier without DRT |
| Nevada State Medicaid | Nevada | Fallon Senior Plan Group 1 | City of Austin Traditional 3 Tier |
| New Hampshire Healthy Families | New Hampshire | FamilyCare Medicare | City of Janesville 2 Tier |
| New Hampshire State Medicaid | New Hampshire | Farm Bureau Essential Rx | City of Janesville 3 Tier |
| New Jersey State Medicaid | New Jersey | Farm Bureau Select Rx | City of La Crosse |
| New Mexico Medicaid | New Mexico | FHCP BlueMedicare Preferred | City of North Platte |
| New York State Medicaid | New York | FHCP Medvantage/Premier | Clear Script Formulary |
| NextLevel Health Medicaid | | Fidelis Care FIDA Plan | Cleveland Clinic EHP Drug Formulary |
| North Carolina Health Choice | North Carolina | Fidelis Care New York | Commercial Roofing Benefits |
| North Carolina Medicaid | North Carolina | Fidelis Dual Advantage, Dual Advantage Flex and Medicaid Advantage Plus | Common Ground Healthcare Cooperative HIX WI |
| North Dakota State Medicaid | North Dakota | Fidelis Medicare Advantage Flex and Medicare Zero Dollar Premium | Community Bank and Trust |
| Ohana QUEST Integration | | Fidelis SecureLife MMP | Community First Health Plans |
| Ohio Medicaid | Ohio | First Choice VIP Care Plus MMP | Community First Health Plans HIX TX |
| Oklahoma Medicaid (SoonerCare) | Oklahoma | First Health Part D A2 Formulary | Community Health Choice HIX TX |
| ONECare by Care1st Health Plan Arizona | Arizona | First Health Part D A3 Formulary | Community Health Plan of Washington Apple Health |
| Optima Family Care/FAMIS | | First+Plus Advantage | Community Health Plan of Washington HIX |
| Oregon Health Plan (Medicaid) | Oregon | First+Plus Advantage Plus | ConnectiCare 3 Tier |
| PacificSource Community Solutions | | FirstCare Advantage | ConnectiCare Freedom HIX CT |
| PacificSource Health Plans PDL/VDL | | FirstCare Advantage Select (HMO SNP) | CoventryOne FL HIX |
| Parkland HEALTHfirst | | FirstMedicare Direct | CoventryOne HIX |
| Parkland KIDSfirst | | FirstMedicare Direct preferredPLUS | Cox Health Plan |

| 395 MEDICAID FORMULARIES | State | 656 MEDICARE ADVANTAGE FORMULARIES | 870 COMMERCIAL FORMULARIES |
|---|----------------|---|---|
| Partnership HealthPlan of CA Healthy Kids | California | Freedom Health Medicare | Cox Smith Matthews Incorporated |
| Partnership HealthPlan of CA Medi-Cal | California | Freedom Health Medi-Medi Full | Crystal Run Health Commercial |
| Passport Health Plan | | Freedom Health Medi-Medi Partial | Culinary Health Fund Formulary |
| Peach State Health Plan Medicaid | | Freedom Medicare VIP Care VIP Savings | Cummins Custom |
| PEEHIP Viva Health | | Fresenius Health Medicare | CVS Caremark Advanced Control Formulary |
| Pennsylvania Open Formulary | Pennsylvania | Gateway Health Plan Medicare Assured - Gold and Platinum | CVS Caremark Performance Formulary |
| PHC Florida MMA Specialty | Florida | Gateway Health Plan Medicare Assured - Prime and Select | CVS Caremark Performance w/ Advanced Specialty Control |
| Phoenix Health Plan | Arizona | Gateway Health Plan Medicare Assured - Ruby and Diamond | CVS Caremark Performance w/ Exclusions |
| Physicians Plus Insurance Corporation BadgerCare Plus | | Gateway Health Plan Pennsylvania | CVS Caremark Performance w/ Exclusions & Advanced Specialty Control |
| PMC Medicaid | | Geisinger Gold \$0 Deductible Rx | CVS Caremark Value |
| Prestige Health Choice MMA | | Geisinger Gold Standard Rx | Cypress Care Workers' Compensation Drug List |
| PrimaryHealth of Josephine County | | Generations Healthcare Classic | DakotaCare |
| PrimeWest Health Medicaid | | GlobalHealth Generations Premier & Select | Dalton Corporation |
| Priority Health Michigan Medicaid | Michigan | GlobalHealth Medicare | Dean Health Plan HIX WI |
| Priority Partners | | Golden State Medicare | Dean Health Plan Three Tier |
| Providence Health Plan-Oregon Health Plan | Oregon | Group Health Cooperative Medicare Advantage | Dean Health Plan Two Tier |
| Rhode Island Medicaid | Rhode Island | Group UCare for Seniors | Denver Health Elevate HIX CO |
| RightCare from Scott & White | | GuildNet Gold | Doctors Hospital at Renaissance |
| Rocky Mountain Child Health Plan Plus | | GuildNet Gold Plus FIDA Plan | DTR Industries |
| Rocky Mountain Medicaid | | Gundersen Lutheran Senior Preferred | East Liverpool City Hospital |
| Rocky Mountain RCCO | | HAP Midwest Medicare Advantage | ELCA Board of Pensions |
| San Francisco Health Plan Healthy Kids | California | HAP Midwest MI Health Link MMP | Eli Lilly Drug List |
| San Francisco Health Plan Medi-Cal | California | HAP Senior Plus Medicare | EmblemHealth Select Care HIX |
| Sanford Health Plan North Dakota Medicaid | North Dakota | Harbor Advantage | EMI Health Educators Rx Basic |
| Santa Clara Family Health Plan Healthy Kids | | HarvestPlains Health Medicare | Empire BCBS Select HIX NY |
| Santa Clara Family Health Plan Medi-Cal | | Health Alliance CONNECT | Empire BlueCross HIX NY |
| Security Health Plan of Wisconsin BadgerCare Plus | Wisconsin | Health Alliance Medicare | Envolve |
| SelectHealth Community Care | | Health Alliance-IL Open Three Tier | Evergreen Health Cooperative HIX MD |
| Sendero Health Plan CHIP | | Health Choice Arizona | Excellus BCBS 3 Tier |
| Sendero Health Plan STAR | | Health Choice Generations | ExcellusBCBS HIX NY |
| Seton Health Plan CHIP | | Health Choice Integrated Care | Excelsior NY State Employees Plan |
| Seton Health Plan STAR | | Health Choice Utah | Exclusive Care |
| Simply Healthcare MMA | | Health First Medicare Classic, Rewards and Value | Express Scripts Basic Formulary |
| South Carolina Medicaid | South Carolina | Health First Medicare Florida Hospital Explorer and SunSaver | Express Scripts Basic with Limited |
| South Country Health Alliance | | Health Net Access | Express Scripts EGWP High Performance 3 Tier |
| South Dakota Medicaid | South Dakota | Health Net Cal MediConnect MMP | Express Scripts EGWP National Preferred 3 Tier |
| South Florida Community Care Network MMA | Florida | Health New England Medicare | Express Scripts EGWP National Preferred 4 Tier |
| Staywell Health Plan Florida MMA | Florida | Health Options Program Basic and Enhanced Medicare Rx Options | Express Scripts High Performance |
| Sunflower State Health Plan KANCARE | | Health Partners Medicare Prime and Value | Express Scripts High Performance with Limited |
| Sunshine Health MMA | | Health Partners Medicare Special | Express Scripts National Preferred |

| 395 MEDICAID FORMULARIES | State | 656 MEDICARE ADVANTAGE FORMULARIES | 870 COMMERCIAL FORMULARIES |
|---|---------------|---|---|
| Sunshine State Health Plan MMA Specialty | | Health Plan of San Mateo CareAdvantage | Express Scripts National Preferred with Limited |
| Superior HealthPlan CHIP | | Health Plan of San Mateo CareAdvantage Cal MediConnect Plan MMP | Fallon Community Health Plan |
| Superior HealthPlan STAR | | HealthChoice OK | Fallon Community Health Plan HIX MA |
| Superior HealthPlan STAR+PLUS | | Healthfirst AbsoluteCare FIDA Plan | Fidelis Care Exchange NY |
| Texas Childrens Health Plan CHIP | Texas | Healthfirst Medicare 65 Plus Plan | FirstCare Health Plans Commercial 5 Tier Formulary |
| Texas Childrens Health Plan STAR | Texas | Healthfirst Medicare New York & New Jersey | FirstCare Health Plans Marketplace Formulary (HIX TX) |
| Texas CHIP Caremark | Texas | HealthNow New York Medicare | Florida Blue Care Choices HIX |
| Texas CHIP Navitus Formulary | Texas | HealthPartners Minnesota Senior Health Options | Florida Blue Three Tier |
| Texas Medicaid | Texas | HealthPartners of Minnesota Medicare | Florida Blue Two Tier Closed |
| The Health Plan West Virginia Medicaid | West Virginia | HealthPlus MedicarePlus | Florida Blue ValueScript Rx HIX |
| Total Health Care Healthy Michigan Formulary | Michigan | HealthSpan Medicare Advantage Plans | Florida Health Care Plan HIX |
| Total Health Care Medicaid | | HealthSpan Medicare Core 2 | Geisinger Health Plan Traditional |
| Total Health Care MICHild | | HealthSpan Medicare Plus (Cost) | Geisinger Health Plan Triple Choice |
| Trillium Medicaid (OHP) | | HealthSun HealthAdvantage | Geisinger Marketplace Formulary |
| Trilogy BadgeCare Plus | | HealthSun MediMax | General Prescription Programs |
| Trilogy Health SSI Medicaid | | HealthSun SunPlus Medicare Advantage | Genesis, Genesis Prime, Genesis at Home, and Orion Constellation Health |
| Triple-S Medicaid | | HealthTeam Advantage Plan | Georgia State Health Benefit Plan |
| Tuality Health Alliance Oregon Health Plan | Oregon | HeartlandPlains Health Medicare | GHI City of New York Employee Plans |
| Tufts Health Together | | Hewlett-Packard Advantage 4-Tier | Gill Industries Formulary |
| UCare Minnesota Medicaid | Minnesota | Highmark Medicare 5 Tier Closed | GL Noble Denton Formulary |
| Umpqua Health Alliance CCO | | HISC Blue Medicare Rx (PDP) Basic | GlobalHealth FEHBP |
| UniCare West Virginia Medicaid | West Virginia | HISC Blue Medicare Rx (PDP) Plus and Value | GlobalHealth State Employee & Educator Plan |
| UnitedHealthcare Community Plan - New York | New York | Hometown Health Plan Senior Care Plus | Government Employee Health Association (GEHA) |
| UnitedHealthcare Community Plan - Wisconsin BadgerCare Plus | Wisconsin | Horizon Medicare | Group Health Cooperative HIX WA |
| UnitedHealthcare Community Plan - Wisconsin SSI Medicaid | Wisconsin | Horizon Medicare Blue | Group Health Cooperative of S Central WI Complete Three Tier |
| UnitedHealthcare Community Plan Arizona Physicians IPA | Arizona | Horizon Medicare Blue Patient Centered Rx | Group Health Cooperative South Central Wisconsin HIX |
| UnitedHealthcare Community Plan Arizona Physicians IPA -CRS | Arizona | Horizon NJ TotalCare | Group Health Cooperative Washington |
| UnitedHealthcare Community Plan Iowa Health Link | Iowa | Humana Gold Plus - Diabetes | Gundersen Lutheran Health Plan |
| UnitedHealthcare Community Plan MississippiCAN | Mississippi | Humana Gold Plus - Diabetes with ED Drugs | Harbor Health Plan HIX |
| UnitedHealthcare Community Plan MPlus MMA | | Humana Gold Plus Integrated Illinois MMP | Harken Health GA HIX |
| UnitedHealthcare Community Plan of Arizona Evercare Select | Arizona | Humana Gold Plus Integrated Virginia MMP | Harken Health IL HIX |
| UnitedHealthcare Community Plan of Delaware | Delaware | Humana Gold Plus Puerto Rico SNP-DE | Harris Corporation |
| UnitedHealthcare Community Plan of Florida | Florida | Humana Integrated Care Program of Illinois | Harvard Pilgrim Premium 3 Tier |
| UnitedHealthcare Community Plan of Kansas - KANCARE | Kansas | Humana Medicare Employer Plan | Harvard Pilgrim Premium 4 Tier |
| UnitedHealthcare Community Plan of Louisiana | Louisiana | Humana Medicare Plus - 5 | Harvard Pilgrim Stride and Stride of NH |
| UnitedHealthcare Community Plan of Maryland | Maryland | Humana Medicare Plus 5 with GC | Harvard Pilgrim Value Formulary 3 Tier |
| UnitedHealthcare Community Plan of Michigan - Michild | Michigan | Humana Medicare Plus 5 with Home Infusion and ED | Harvard Pilgrim Value Formulary 4 Tier |

| 395 MEDICAID FORMULARIES | State | 656 MEDICARE ADVANTAGE FORMULARIES | 870 COMMERCIAL FORMULARIES |
|---|---------------|---|--|
| UnitedHealthcare Community Plan of Michigan (formerly Great Lakes HP) | Michigan | Humana Medicare Plus-5 Chronic Lung | Harvard Pilgrim Value Formulary 5 Tier |
| UnitedHealthcare Community Plan of Mississippi - MS CHIP | Mississippi | Humana Medicare Plus-5 Congestive Heart | Health Alliance Medical Plans HIX |
| UnitedHealthcare Community Plan of Nebraska | Nebraska | Humana Medicare Plus-5 Palm Beach | Health Alliance Plan HIX MI |
| UnitedHealthcare Community Plan of New Jersey | New Jersey | Humana Medicare Plus-5 w/ ED Drugs | Health Alliance Plan of Michigan 2-Tier |
| UnitedHealthcare Community Plan of New Mexico CentennialCare | New Mexico | Humana Medicare Plus-5 w/ Home Infusion | Health Alliance Plan of Michigan 3-Tier |
| UnitedHealthcare Community Plan of New York CHIP | New York | Humana Medicare Plus-5 w/ Maintenance Medications | Health Choice Arizona Essential HIX AZ |
| UnitedHealthcare Community Plan of Ohio | Ohio | Humana Medicare Plus-5 w/ Medicaid & ED Drugs | Health First Health Plans Florida 3Tier |
| UnitedHealthcare Community Plan of Pennsylvania | Pennsylvania | Humana Medicare Plus-5 w/ Medicaid Medications | Health First Health Plans Florida 5 Tier |
| UnitedHealthcare Community Plan of Pennsylvania CHIP | Pennsylvania | iCare Family Care Partnership Plan | Health First Health Plans Florida HIX |
| UnitedHealthcare Community Plan of Rhode Island | Rhode Island | iCare Medicare Plan | Health Net of Arizona 3 Tier Simplified with Specialty |
| UnitedHealthcare Community Plan of Texas STAR | Texas | ICS Community Care Plus FIDA | Health Net of Arizona 4 Tier Simplified with Specialty |
| UnitedHealthcare Community Plan of Texas STAR+PLUS | Texas | IEHP DualChoice Cal MediConnect MMP | Health Net of Arizona 4 Tier Standard with Specialty |
| UnitedHealthcare Community Plan of Washington Apple Health | Washington | IlliniCare Health Plan MMP | Health Net of Arizona Essential Rx HIX |
| UnitedHealthcare Community Plan QUEST Integration Program | | Illinois Health Alliance Medicare DSNP MMP | Health Net of AZ 3 Tier Standard with Specialty |
| UnitedHealthcare Community Plan TennCare | Tennessee | IMCare Medicare | Health Net of California Essential Rx HIX |
| UnitedHealthcare Community Plan Texas CHIP | Texas | Independent Health Medicare Advantage | Health Net of California Three Tier |
| Unity Health Plans Insurance Corporation BadgerCare Plus | | Indiana University Health Plans Medicare | Health Net of California Three Tier with Specialty |
| UPMC For Kids | | Inter Valley Health OC Preferred | Health Net of California Two Tier with Specialty |
| Utah Medicaid | Utah | Inter Valley Health Plan Desert Preferred Choice | Health Net of Oregon Essential Rx |
| Vermont Medicaid | Vermont | Inter Valley Health Plan Value Preferred Choice | Health Net Washington Essential Rx |
| Virginia Medicaid | Virginia | Inter Valley Health Service to Seniors | Health New England |
| VNSNY CHOICE SelectHealth Formulary | | Johns Hopkins Advantage | Health Plan of Nevada 4 Tier HIX |
| Washington State Medicaid | Washington | Kaiser Permanente Medicare Advantage Enhanced (Group Plans) | Health Plan of Nevada Three Tier |
| Washtenaw Health Plan B | | Kaiser Permanente Senior Advantage | Health Plans of Nevada Four Tier |
| Well Sense Health Plan | | KelseyCare Advantage | Health Republic New Jersey HIX |
| WellCare /Staywell Healthy Kids | | Keystone 65 Focus Rx | Health Select of Texas |
| West Virginia Family Health Plan | West Virginia | Keystone 65 Preferred HMO | Health Tradition |
| West Virginia Medicaid | West Virginia | Keystone 65 Select HMO | Health Tradition HIX |
| Western Oregon Advanced Health CCO Medicaid | Oregon | Keystone 65 Select Rx Preferred Rx Personal Choice 65 Rx | HealthAmerica Pennsylvania B1 Formulary |
| Willamette Valley Community Health | | Keystone VIP Choice | HealthAmerica Pennsylvania B2 Formulary |
| Wisconsin Medicaid | Wisconsin | LA Care Cal MediConnect MMP | HealthAmerica Pennsylvania B2 Formulary Closed |
| Wyoming State Medicaid | Wyoming | Leon Cares Medicare Plan | HealthAmerica Pennsylvania B3 Formulary |
| YourCare Child Health Plus | | Liberty Health Advantage Dual Power | Healthfirst Leaf Plans HIX NY |
| YourCare Option | | Liberty Health Advantage Preferred Choice | HealthLinc |
| | | LifeWorks Advantage | HealthNow New York Three Tier |
| | | Lovelace Senior Plan | HealthPartners Minnesota |
| | | Magellan Rx Medicare Basic | HealthPartners Minnesota FEHBP |

| 395 MEDICAID FORMULARIES | State | 656 MEDICARE ADVANTAGE FORMULARIES | 870 COMMERCIAL FORMULARIES |
|---------------------------------|--------------|--|---|
| | | Magnolia Health Plan Medicare Advantage | HealthPartners Minnesota Health Care Programs |
| | | Maricopa Care Advantage | HealthPartners MN HIX GenericsAdvantage 2 Tier |
| | | Martin's Point Generations Advantage | HealthPartners MN HIX GenericsAdvantage 4 Tier |
| | | Martin's Point Generations Advantage Focus DC | HealthPartners UnityPoint Health-Align-Symmetry |
| | | Martin's Point Generations Advantage Value Plus | HealthPlus County Health Plan A and B |
| | | McLaren Advantage Medicare | HealthPlus Enterprise & Large Group Commercial |
| | | MCS Classicare I | HealthPlus HMO/PPO Legacy Commercial |
| | | MCS Classicare II | HealthPlus VenturePlus & Signature Commercial |
| | | Medica DUAL Solution | HealthSmartRx |
| | | Medica HealthCare Plans MedicareMax | HealthSpan HIX OH |
| | | Medica HealthCare Plans MedicareMax Plus | HealthSpan Selected Formulary |
| | | Medica Prime Solution (Cost) Part D | HealthSpan Standard Formulary 3 Tier |
| | | Medicare GenerationRx PDP | HealthSpan Standard Formulary 4 Tier |
| | | MedicareBlue Rx Premier (BCBS IA MN MT NE ND SD WY) | HealthSpan Traditional Formulary 2 Tier |
| | | MedicareBlue Rx Standard (BCBS MN MT NE ND WY IA SD) | HealthSpan Traditional Formulary 3 Tier |
| | | MediGold | HealthyCT HIX |
| | | MedImpact MedCare | Hennepin County |
| | | Medi-Pak Advantage Essential | Highmark BCBS Delaware |
| | | Medi-Pak Rx Basic/Advantage/Elite | Highmark BCBS Delaware HIX Comprehensive |
| | | Medi-Pak Rx Premier | Highmark BCBS HIX Comprehensive |
| | | MedMutual Advantage | Highmark BCBS HIX Progressive |
| | | MedStar Medicare Choice | Highmark Blue Cross Blue Shield 3 Tier |
| | | MedStar Medicare Choice Care Advantage | Highmark Health Options |
| | | MedStar Medicare Choice Dual Advantage | Highmark Progressive Formulary |
| | | Memorial Hermann Advantage | Hillsborough County Public Schools Rx4 |
| | | Mercy Care Advantage | HIP Health Plan New York 2 Tier |
| | | Meridian Advantage Plan of Illinois | HMO Louisiana 3 Tier |
| | | Meridian Advantage Plan of Michigan | HMO Partners, Inc. |
| | | Meridian Complete IL MMP | HMSA Choice |
| | | Meridian Complete MI MMP | HMSA Choice Non-Grandfathered Plans |
| | | MetroPlus FIDA Plan | HMSA Control |
| | | MetroPlus Medicare | HMSA Essential |
| | | MHS Health Wisconsin Advantage | HMSA Metallic Prescription Formulary |
| | | MHS Hoosier Care Connect | HMSA Select |
| | | Midwest Health Plan | HMSA Select Non-Grandfathered Plans |
| | | Missouri Medicare Select | Home State Health Plan |
| | | MMM Diamante Choice Platino | Hometown Standard |
| | | MMM Diamante Excel Platino | Horizon BCBS of New Jersey |
| | | MMM Diamante Extra Platino | Horizon BCBS of New Jersey Two Tier |
| | | MMM Elite Excel | Horizon BlueCross BlueShield of NJ HIX |
| | | MMM Elite Ultra | Horizon NJ Health |
| | | MMM Supremo | Hospitality Rx Formulary |
| | | MMM Unico | Humana HDHP Complete HIX FL |
| | | MMM Unico Extra | Humana HDHP Complete HIX TX |
| | | MN Advantage Health Plan | Humana HDHP EHB HIX |
| | | Molina Dual Options- Illinois MMP | Humana HDHP Plus HIX |
| | | Molina Dual Options MI Health Link MMP | Humana HDHP Traditional |
| | | Molina Dual Options MyCareOhio MMP | Humana HDHP Value HIX CO and UT |
| | | Molina Dual Options SC MMP | Humana National 5 Closed |
| | | Molina Dual Options STAR+PLUS MMP | Humana National 5 Formulary |
| | | Molina Dual Options-California MMP | Humana National 5 PDP Enhanced |
| | | Molina Medicare | Humana National 5 w/ ED Drugs |

| 395 MEDICAID FORMULARIES | State | 656 MEDICARE ADVANTAGE FORMULARIES | 870 COMMERCIAL FORMULARIES |
|---------------------------------|--------------|--|--|
| | | MVP Health Care Medicare | Humana National 5 w/ Home Infusion |
| | | NaviCare | Humana National 5 w/ Maintenance Medications |
| | | Navitus MedicareRx PDP | Humana National 5 with GC |
| | | Neighborhood INTEGRITY MMP | Humana National 5 with Weight Loss |
| | | Network Health Go, Anywhere & Network Platinum Plus, Premier, Select | Humana National 6 - Diabetes |
| | | Network Health Plan | Humana National 6 CSNP |
| | | NetworkCares Medicare | Humana National 6 w/ ED & Maintenance Medications |
| | | New West Medicare | Humana National 6 w/ Maintenance Medications |
| | | NHC Advantage | Humana National 6 with Home Infusion |
| | | North County Select Medicare | Humana Preferred Rx |
| | | North Shore-LIJ FIDA LiveWell | Humana Rx2 EHB |
| | | OneCare Medicare Advantage | Humana Rx2 Traditional |
| | | Optima Medicare Prime | Humana Rx3 EHB |
| | | Optima Medicare Value | Humana Rx3 Standard |
| | | Optimum Healthcare Diamonds Rewards Plan | Humana Rx3 Traditional |
| | | Optimum HealthCare Emerald | Humana Rx4 EHB |
| | | Optimum Healthcare Gold, Diamond Rewards and Platinum Plan | Humana Rx4 EHB HIX |
| | | PacificSource Medicare | Humana Rx4 Standard |
| | | Paramount Advantage Medicaid | Humana Rx4 Traditional |
| | | Paramount Elite Enhanced | Humana Rx5 Complete HIX FL |
| | | Paramount Elite Standard | Humana Rx5 Complete HIX TX |
| | | Passport Advantage | Humana Rx5 Plus HIX |
| | | Peach State Health Plan Advantage HMO SNP | Humana Rx5 Value HIX CO and UT |
| | | Peach State Health Plan Medicare Advantage | Humana RxImpact |
| | | Peoples Health | Humana Walmart Rx Plan |
| | | PERS Moda Health PPORX | Iberia Medical Center |
| | | Phoenix Advantage and Select | IBM |
| | | Phoenix Advantage Plus | IdealCare from Sendero Health Plans |
| | | PHP Care Complete FIDA IDD Plan | Independence BC AmeriHealth Select |
| | | Piedmont Select Medicare | Independence Blue Cross HIX 4 Tier |
| | | PMC Max Extra | Independence Blue Cross HIX 5 Tier |
| | | PMC Premier Preferred Platino | Independence Blue Cross/AmeriHealth NJ HIX 3 Tier |
| | | Positive Healthcare Partners | Independent Health EGWP |
| | | Preferred Choice Broward | Independent Health FEHBP |
| | | Preferred Choice Dade/Medicare Assist | Independent Health HIX NY |
| | | Preferred Choice/Medicare Assist Palm Beach | Independent Health-Western New York |
| | | Preferred Complete Care | Indiana University Health Plan |
| | | Preferred Secure Option | InHealth Mutual HIX |
| | | Preferred Special Care Miami-Dade | Integrated Prescription Management Basic Plus |
| | | Premera 3 Tier Incentive | Intel Providence Health Plan |
| | | Premera Blue Cross Medicare Advantage | International Foundation of Employee Benefit Plans |
| | | Premier Health Advantage | INTotal Health |
| | | Premier Health Advantage VIP | Irwin Telescopic Seating |
| | | Presbyterian Senior Care | IU Health Plans HIX |
| | | PrimeTime Health Plan - Plus & Classic | Jai Medical Systems |
| | | PrimeTime Health Plan Aultimate | Johns Hopkins EHP Formulary |
| | | PrimeWest Health Medicare | Johnsonville Sausage |
| | | Priority Health Medicare | Kaiser Permanente Colorado - Denver/Boulder/Northern HIX |
| | | ProHealth Care Senior Preferred | Kaiser Permanente Colorado - Southern HIX |
| | | Providence Medicare | Kaiser Permanente Colorado PPO |
| | | Providence Medicare Dual Plus | Kaiser Permanente Denver/Boulder, Mountain and Northern Colorado HMO |

| 395 MEDICAID FORMULARIES | State | 656 MEDICARE ADVANTAGE FORMULARIES | 870 COMMERCIAL FORMULARIES |
|---------------------------------|--------------|---|---|
| | | Provider Partners Advantage | Kaiser Permanente EPO & Self Funded Colorado |
| | | Provider Partners PA Advantage Plan | Kaiser Permanente FEHBP Colorado |
| | | PruittHealth Premier | Kaiser Permanente Georgia HIX |
| | | QualChoice Advantage | Kaiser Permanente Georgia HMO |
| | | Quality Health Plans of NY - Medicare Advantage | Kaiser Permanente Georgia Multi-Choice |
| | | Regence BCBS of Oregon BlueAdvantage HMO | Kaiser Permanente Hawaii |
| | | Regence BCBS of Oregon MedAdvantage + RxClassic PPO + RxEnhanced PPO | Kaiser Permanente Hawaii HIX 3 Tier |
| | | Regence BCBS of Utah BlueAdvantage HMO | Kaiser Permanente Hawaii HIX 4 Tier |
| | | Regence BCBS of Utah MedAdvantage + Rx Classic PPO + Rx Enhanced PPO | Kaiser Permanente Hawaii QUEST |
| | | Regence BlueShield of Idaho Blue MedAdvantage HMO + HMO Plus | Kaiser Permanente Maryland HealthChoice |
| | | Regence BlueShield of Idaho MedAdvantage + Rx Classic PPO + Rx Enhanced PPO | Kaiser Permanente Mid-Atlantic |
| | | Regence BlueShield of Washington BlueAdvantage HMO | Kaiser Permanente Mid-Atlantic HIX |
| | | Regence BlueShield of Washington MedAdvantage + Rx Classic PPO | Kaiser Permanente Northern California |
| | | Regence Medicare Script Basic | Kaiser Permanente Northern California HIX |
| | | Regence Medicare Script Enhanced | Kaiser Permanente Northwest |
| | | Reid Health Alliance Medicare | Kaiser Permanente Oregon HIX |
| | | Retiree Rx Care | Kaiser Permanente S. Colorado HMO 2 Tier |
| | | RiverLink Health Medicare | Kaiser Permanente Southern California |
| | | RiverSpring FIDA Plan | Kaiser Permanente Southern California HIX |
| | | RiverSpring Star | Kaiser Permanente Southern Colorado HMO Formulary |
| | | Rocky Mountain Health Plan Medicare Retirees | Kaiser Permanente Washington HIX |
| | | Rocky Mountain Premier Medicare | Kalamazoo Anesthesiology |
| | | Samaritan Advantage Medicare | Kansas State Group Health Insurance Program |
| | | Samaritan Advantage Premier Plan Plus | Kentucky Employees Health Plan 3 Tier |
| | | Samaritan Advantage Special Needs Plan HMO | Kentucky Rural Electric Cooperative |
| | | Santa Clara Family Health Plan Cal MediConnect | KPS Health Plans |
| | | SCAN Health Plan Medicare Advantage | Kroger Pharmacy Generic Formulary |
| | | Scott and White Senior Care/Vital Traditions | Kroger Prescription Plans |
| | | SecureRx Option 3 | LA Care Marketplace HIX CA |
| | | SecureRx PDP | Land of Lincoln HIX IL |
| | | Security Health Plan AllyRx | LDI Pharmacy Benefit Management |
| | | Security Health Plan Medicare | Magellan Rx Precision |
| | | SelectHealth Advantage | Magellan Rx Standard Formulary |
| | | Senior Dimensions Greater Nevada | Magellan Rx Standard Plus |
| | | Senior Dimensions Southern Nevada | Magic Steel Corporation |
| | | Senior Whole Health Massachusetts | Mail Handlers Benefit Plan |
| | | Senior Whole Health New York | Maine Community Health Options |
| | | SeniorBlue and SeniorBlue PPO | MAPFRE Formulary |
| | | SeniorCare Wisconsin | Maryland Physicians Care |
| | | Sharp Advantage Select/SelectPlus | MaxCare |
| | | Sharp SecureHorizons Plan by UnitedHealthcare | Maxor Plus Three Tier |
| | | Sierra Spectrum | Maxor Plus Two Tier |
| | | Signature Advantage | Mayo Clinic 2 Tier |
| | | SilverScript Choice | Mayo Clinic 3 Tier |
| | | SilverScript Copper 4 Tier | Mayo Health Employee Formulary |
| | | SilverScript Platinum 4 Tier | McLaren Health Plan Commercial |
| | | SilverScript Plus | McLaren Health Plan HIX MI |

| 395 MEDICAID FORMULARIES | State | 656 MEDICARE ADVANTAGE FORMULARIES | 870 COMMERCIAL FORMULARIES |
|---------------------------------|--------------|---|--|
| | | Simply Healthcare Medicare | MDWise HIX |
| | | SmartSaver Rx PDP | Medica Advanced Control Specialty |
| | | Soundpath Health Medicare | Medica HIX |
| | | South Country Health Alliance AbilityCare and SeniorCare Complete | Medica SelectCare Two Tier |
| | | StableView Health Medicare | Medica Two Tier |
| | | Stanford Health Care Advantage | Medical Associates Health Plan |
| | | SummaCare Medicare Topaz, Ruby, Sapphire and Emerald | Medical Mutual of Ohio |
| | | Sunshine Health Advantage - Miami-Dade | Medical Mutual of Ohio HIX |
| | | Sunshine Health Advantage SNP | MedImpact Portfolio |
| | | Sunshine Health Medicare Advantage HMO | MedImpact Select |
| | | Superior HealthPlan Advantage | MedTrak National |
| | | Superior HealthPlan Medicare Advantage | MercyCare Health Plans HIX WI |
| | | Superior HealthPlan STAR+PLUS MMP | Meridian Choice HIX MI |
| | | SWH Whole Health FIDA Plan | Metalcraft of Mayville |
| | | Symphonix Value Rx | MetroPlus Health Plan HIX NY |
| | | Texan Plus Houston/Beaumont | Minuteman Health HIX MA |
| | | TexanPlus Star | Mississippi State and School Employees Health Plan |
| | | The Health Plan SecureCare | Moda Health Large Groups |
| | | The Health Plan SecureCare SNP | MODA Health Plan |
| | | The Health Plan SecureChoice | Moda Health Plan of Oregon HIX |
| | | Transamerica MedicareRx Classic | Moda Health Plan Small Group Formulary |
| | | Tribute Health Plan of Arkansas | Moda Health Preferred Drug List |
| | | Tribute Health Plan of Oklahoma | Moda Health Preferred Drug List of Alaska HIX |
| | | Trillium Advantage Pioneer Rx PPO | Molina Healthcare of California HIX |
| | | Trillium Advantage Special Needs Plans | Molina Healthcare of Florida HIX |
| | | Triple-S Advantage Medicare Optimo Plus | Molina Healthcare of Michigan HIX |
| | | Triple-S Advantage Medicare Platino Plus, Ultra, and Advance | Molina Healthcare of New Mexico HIX |
| | | Triple-S Advantage Medicare Royal, Vital Plus, Royal Plus | Molina Healthcare of Ohio HIX |
| | | Tufts Health Plan Medicare Employer Group PDP | Molina Healthcare of Texas HIX |
| | | Tufts Health Plan Medicare Preferred | Molina Healthcare of Utah HIX |
| | | Tufts Health Unify MMP | Molina Healthcare of Washington HIX |
| | | Tufts Medicare Employer Group | Molina Healthcare of Wisconsin HIX |
| | | Tufts Medicare Preferred Senior Care Options | Montana Health Coop HIX MT |
| | | UCare EssentiaCare | Montana State Fund |
| | | UCare for Seniors Essentials Rx, Value Plus, Prime and Classic | Montgomery County Public Schools |
| | | UCare Minnesota Senior Health Options (MSHO) | Mountain Health Coop HIX |
| | | Ultimate Health Plans | MVP Health Care HIX NY |
| | | United American Part D Enhanced | MVP Health Care HIX VT |
| | | United American Part D Essential | MVP Health Plan |
| | | United American Part D Select | MVP Health Plan Formulary |
| | | UnitedHealthCare Advantage Four Tier | MVP Option and Option Family |
| | | UnitedHealthCare Advantage Three Tier | MyPriority MI 5 Tier HIX |
| | | UnitedHealthcare Assisted Living Plan | MyPriority MI 6 Tier HIX |
| | | UnitedHealthcare Chronic Complete | Nashville Metro Government |
| | | UnitedHealthcare Connected for MyCare Ohio MMP | National Benefit & Pension Fund 1199 |
| | | UnitedHealthcare Connected MMP | National Pharmaceutical Services/ Pharmaceutical Technologies, Inc. |
| | | UnitedHealthcare Dual Complete Focus | Navitus Open Formulary |
| | | UnitedHealthcare Dual Complete LP - FL | Navitus Select |
| | | UnitedHealthcare Dual Complete LP1 | Navitus Traditional Formulary |
| | | UnitedHealthcare Dual Complete ONE | Neighborhood Health Plan MA HIX |
| | | UnitedHealthcare Dual Complete RP ONE | Neighborhood Health Plan of RI HIX |

| 395 MEDICAID FORMULARIES | State | 656 MEDICARE ADVANTAGE FORMULARIES | 870 COMMERCIAL FORMULARIES |
|---------------------------------|--------------|--|---|
| | | UnitedHealthcare Dual Complete/LP | Network Health Plan WI HIX |
| | | UnitedHealthcare Dual Complete/RP PPO-SNP | New Mexico Health Connections HIX NM |
| | | UnitedHealthcare MedicareComplete Choice/Choice Plan 1, 3, & 4 | New York Hotel Trades Council/Hotel Association of New York City |
| | | UnitedHealthcare MedicareComplete Focus | Nippon Life |
| | | UnitedHealthcare MedicareComplete Plan 1-3 | North Carolina State Health Plan for Teachers and State Employees |
| | | UnitedHealthcare MedicareDirect Rx | North Shore LIJ CareConnect HIX NY |
| | | UnitedHealthcare MedicareRx for Groups | Northwest Pharmacy Services |
| | | UnitedHealthcare Nursing Home Plan | Ohio Bureau of Workers' Compensation |
| | | UnitedHealthCare Oxford Connecticut Advantage Three Tier | Ohio Public Employees Retirement System (OPERS) Non-Medicare |
| | | UnitedHealthcare Oxford Health Plan NJ/NY Advantage Three Tier | Optima Health Four Tier |
| | | UnitedHealthcare Plan River Valley - Advantage 3 Tier | Optima Health Plan HIX VA |
| | | UnitedHealthcare Plan River Valley - Advantage 4 Tier | OptumRx Generic-Centric |
| | | UnitedHealthcare Senior Care Options | OptumRx Premium Highly Managed |
| | | UnitedHealthcare The Villages MedicareComplete 1-2 | OptumRx Premium Highly Managed with UM |
| | | UnitedHealthcare The Villages MedicareComplete 2 | OptumRx Select Covered |
| | | University Care Advantage | OptumRx Select Covered with Focused UM |
| | | University of Maryland Health Advantage | OptumRx Select Highly Managed |
| | | UPMC Advantage Choice | OptumRx Select Managed |
| | | UPMC for Life Dual | OptumRx Select Managed with Focused UM |
| | | UPMC For You | Oregon Educators Benefit Board |
| | | UPMC Medicare Advantage | Oregons Health CO-OP HIX |
| | | UPMC Medicare Advantage SNP | Oscar CA HIX |
| | | UPMC Open Choice | Oscar HIX NY |
| | | UPMC Value Choice | Oscar NJ HIX |
| | | UPMC Your Choice | Oscar TX HIX |
| | | Upper Peninsula Health Plan | Oshkosh Corporation/JLG Industries |
| | | Upper Peninsula Health Plan Advantage | PA Employees Benefit Trust Fund |
| | | Upper Peninsula Health Plan MI Health Link MMP | PacificSource HIX ID |
| | | Upper Peninsula Health Plan Plus | PacificSource HIX MT |
| | | UPREHS Prime Medicare Part D | PacificSource HIX OR |
| | | UW Health Senior Preferred | Paramount Healthcare |
| | | Vantage Medicare Plans | Paramount Healthcare PPO |
| | | Vibra Health Plan Enhanced | Paramount Individual Exchange and Essential (HIX OH) |
| | | Vibra Health Plan Essential | Partners Community Healthcare |
| | | VillageCareMAX Full Advantage FIDA Plan | PBM Plus |
| | | VillageCareMAX Medicare Health Advantage (HMO SNP) | Perdue Farms |
| | | VillageHealth Medicare | Pfizer Prescription Drug Program |
| | | Virginia Premier CompleteCare MMP | Phoenix Choice Health Plan HIX |
| | | VIVA Medicare Extra Value | Physicians Health Plan of Michigan |
| | | VIVA Medicare Plus/Premier/Me | Physicians Health Plan of Michigan HIX |
| | | VNSNY CHOICE FIDA Complete | Physicians Health Plan of Northern Indiana |
| | | VNSNY CHOICE Medicare Classic, Preferred, Total, & Maximum | Physicians Health Plan of Northern Indiana HIX |
| | | VNSNY Choice Medicare Enhanced & Ultra | Physicians Plus Five Tier Premier |
| | | WellCare/Ohana/Liberty/Value/Access/Dividend/Essential/Choice/Plus/Preferred | Physicians Plus Four Tier Legacy |
| | | WellCare- Access-Liberty-Reserve-Rx-Select-Value | Physicians Plus Three Tier Legacy |

| 395 MEDICAID FORMULARIES | State | 656 MEDICARE ADVANTAGE FORMULARIES | 870 COMMERCIAL FORMULARIES |
|---------------------------------|--------------|---|---|
| | | WellCare Advocate Complete FIDA | Physicians Plus Two Tier Legacy |
| | | WellCare Classic | Piedmont Community HealthCare HIX |
| | | WellCare Classic & Extra | Pinal County Employee Benefit Trust |
| | | WellCare Essential Georgia | Pinnacle RxSolutions Performance Drug List |
| | | WellCare of Georgia | PreferredOne Formulary |
| | | WellCare of Kentucky | Premera Blue Cross Value-Based |
| | | WellCare of New Jersey | Premera Generics Only |
| | | WellCare of New York Healthy Choice | Premera HIX X1 |
| | | WellCare of South Carolina | Premera HIX X3 |
| | | WellCare Value/ Choice Georgia | Premera HIX X4 |
| | | Wisconsin Physician Services Medicare | Premera Incentive 2-Tier |
| | | WVA Senior Advantage HMO-SNP | Premera Incentive 4-Tier |
| | | | Premera-Select |
| | | | Premier Health Business Value |
| | | | Premier HealthOne HIX |
| | | | Presbyterian Health Plan Centennial Care |
| | | | Presbyterian Health Plan FEHBP |
| | | | Presbyterian Health Plan Group 4 Tier |
| | | | Presbyterian Health Plan HIX NM |
| | | | Prevea360 HIX WI |
| | | | PrimeChoice Accord 3 Tier |
| | | | Prince Manufacturing Formulary |
| | | | Priority Health Michigan Commercial Formulary |
| | | | ProCare Rx |
| | | | Prominence Health Plan |
| | | | Prominence Health Plan Nevada |
| | | | Prominence Health Plan Nevada HIX |
| | | | Prominence Health Plan Texas |
| | | | Providence Health Plan Formulary A |
| | | | Providence Health Plan Formulary D |
| | | | Providence Health Plan Formulary G |
| | | | Public Education Employees' Health Insurance Plan |
| | | | Public Employees Health Program (PEHP) |
| | | | QualChoice Basic |
| | | | QualChoice Enhanced |
| | | | QualChoice Essential Formulary HIX |
| | | | QualChoice FEHBP |
| | | | Raytheon |
| | | | Regence BlueShield Essential WA HIX |
| | | | Regence Commercial |
| | | | Riverside Health |
| | | | Rock County Formulary (Plan 2) |
| | | | Rock County Formulary (Plan 4) |
| | | | Rock County Formulary (Plan 6) |
| | | | Rocky Mountain Health Plan |
| | | | Rocky Mountain Health/ Good Health |
| | | | Rural Arizona Group Health Trust |
| | | | Samaritan Choice Plan |
| | | | San Luis Valley HMO Colorado Two Tier |
| | | | Sanford Health Plan Commercial 3 Tier |
| | | | Sanford Health Plan HIX |
| | | | Santa Clara County Employee |
| | | | Sargento Foods |
| | | | Sartori Foods |
| | | | Sav-Rx |
| | | | Scheurer Hospital Formulary |
| | | | School District of Cudahy |
| | | | Scott & White Health Plan 3 Tier with Specialty |

| 395 MEDICAID FORMULARIES | State | 656 MEDICARE ADVANTAGE FORMULARIES | 870 COMMERCIAL FORMULARIES |
|---------------------------------|--------------|---|---|
| | | | Scott & White Health Plan 4 Tier with Specialty |
| | | | Scott & White Health Plan HIX |
| | | | Scott and White Health Plan ERS |
| | | | ScripNet Worker's Compensation Drug List |
| | | | Script Care |
| | | | ScriptGuideRx/4D |
| | | | Seaver Associates Leasing |
| | | | Security Health Plan of Wisconsin |
| | | | Security Health Plan of Wisconsin HIX |
| | | | SelectHealth RxCore Idaho HIX |
| | | | SelectHealth RxCore Utah |
| | | | SelectHealth RxSelect Idaho |
| | | | SelectHealth RxSelect Utah |
| | | | Self-Insured Schools of California (SISC) |
| | | | Serve You Select |
| | | | Serve You Standard |
| | | | Sharp Health Plan Four Tier |
| | | | Sharp Health Plan Four Tier HIX |
| | | | Sharp Health Plan Three Tier |
| | | | Sierra Health and Life Four Tier |
| | | | Sierra Health and Life Three Tier |
| | | | SignatureScripts from OhioHealth Group |
| | | | SIHO HIX |
| | | | Southeastern Indiana Health Organization (SIHO) |
| | | | State Employees of Montana Formulary |
| | | | State of Arizona Employees |
| | | | State of Connecticut Employee Formulary |
| | | | State of Florida Employee Prescription Plan |
| | | | State of Louisiana - Office of Group Benefits |
| | | | State of Maryland Employees |
| | | | State of Michigan Employees |
| | | | State of New Jersey Employees |
| | | | State of New York PICA Program |
| | | | State of South Dakota Employees |
| | | | State of Tennessee ParTNers for Health |
| | | | State of WI Group Health |
| | | | SummaCare |
| | | | SummaCare HIX OH |
| | | | Sutter Health |
| | | | Teck American Incorporated |
| | | | The Health Plan of Upper Ohio Valley |
| | | | Thedacare |
| | | | Total Care |
| | | | Total Health Care 3 Tier |
| | | | Total Health Care MI HIX |
| | | | TREK Bicycle Corporation |
| | | | Trillium Vital Fit Standard HIX OR |
| | | | Triple-S Commercial |
| | | | Triple-S FEHBP |
| | | | TRS-ActiveCare |
| | | | TRUSTED Health Plan |
| | | | Tufts Health Direct HIX |
| | | | Tufts Health Plan |
| | | | Tufts Health Plan HIX |
| | | | Tufts Health Plan Rhode Island |
| | | | UAW Retiree Medical Benefits Trust |

| 395 MEDICAID FORMULARIES | State | 656 MEDICARE ADVANTAGE FORMULARIES | 870 COMMERCIAL FORMULARIES |
|---------------------------------|--------------|---|--|
| | | | UCare Choice HIX MN |
| | | | Unicare State Indemnity Plan |
| | | | Uniform Medical Plan |
| | | | Union Pacific Railroad Employees Health System (UPREHS) |
| | | | United Federation of Teachers Welfare Fund |
| | | | United Healthcare California Advantage HIX |
| | | | United Mine Workers of America Health & Retirement Funds |
| | | | UnitedHealthcare 3 Tier Advantage HIX - MA |
| | | | UnitedHealthcare 3 Tier Advantage HIX - NY |
| | | | UnitedHealthcare 3 Tier Traditional HIX - CT |
| | | | UnitedHealthcare 3 Tier Traditional HIX - NJ |
| | | | UnitedHealthcare 4 Tier Advantage HIX - TN |
| | | | UnitedHealthcare 4 Tier Advantage HIX AL |
| | | | UnitedHealthcare 4 Tier Advantage HIX AR |
| | | | UnitedHealthcare 4 Tier Advantage HIX FL |
| | | | UnitedHealthcare 4 Tier Advantage HIX GA |
| | | | UnitedHealthcare 4 Tier Advantage HIX LA |
| | | | UnitedHealthcare 4 Tier Advantage HIX MD |
| | | | UnitedHealthcare 4 Tier Advantage HIX MS |
| | | | UnitedHealthcare 4 Tier Advantage HIX NC |
| | | | UnitedHealthcare 4 Tier Advantage HIX RI |
| | | | UnitedHealthcare 4 Tier Advantage HIX SC |
| | | | UnitedHealthcare 4 Tier Essential HIX KS |
| | | | UnitedHealthcare 4 Tier Essential HIX KY |
| | | | UnitedHealthcare 4 Tier Essential HIX NE |
| | | | UnitedHealthcare 4 Tier Essential HIX OK |
| | | | UnitedHealthcare 4 Tier Essential HIX WA |
| | | | UnitedHealthcare 4 Tier Essential IA |
| | | | UnitedHealthcare 4 Tier Traditional HIX AR |
| | | | UnitedHealthCare California SignatureValue 2 Tier |
| | | | UnitedHealthCare California SignatureValue 3 Tier |
| | | | UnitedHealthcare Commercial 3 Tier |
| | | | UnitedHealthcare Essential HIX - VA |
| | | | UnitedHealthcare Essential HIX AZ |
| | | | UnitedHealthcare Essential HIX CO |
| | | | UnitedHealthcare Essential HIX IL |
| | | | UnitedHealthcare Essential HIX IN |
| | | | UnitedHealthcare Essential HIX MD |
| | | | UnitedHealthcare Essential HIX MI |
| | | | UnitedHealthcare Essential HIX MO |
| | | | UnitedHealthcare Essential HIX OH |

| 395 MEDICAID FORMULARIES | State | 656 MEDICARE ADVANTAGE FORMULARIES | 870 COMMERCIAL FORMULARIES |
|---------------------------------|--------------|---|--|
| | | | UnitedHealthcare Essential HIX PA |
| | | | UnitedHealthcare Essential HIX TX |
| | | | UnitedHealthcare Essential HIX WI |
| | | | UnitedHealthcare FEHBP - Choice Plus Advanced |
| | | | UnitedHealthcare FEHBP - MD IPA |
| | | | UnitedHealthcare FEHBP California |
| | | | UnitedHealthcare FEHBP of the Midwest |
| | | | UnitedHealthcare FEHBP Texas |
| | | | UnitedHealthcare Golden Rule Four Tier |
| | | | UnitedHealthcare Golden Rule Three Tier |
| | | | UnitedHealthcare of California SignatureValue 4 Tier |
| | | | UnitedHealthCare Oxford Connecticut Traditional Three Tier |
| | | | UnitedHealthCare Oxford Health Plan NJ/NY Traditional Three Tier |
| | | | UnitedHealthcare Plan River Valley - Traditional |
| | | | UnitedHealthCare SignatureValue 3 Tier |
| | | | UnitedHealthcare SignatureValue Open |
| | | | UnitedHealthcare SignatureValue OR |
| | | | UnitedHealthcare SignatureValue TX |
| | | | UnitedHealthcare SignatureValue WA |
| | | | UnitedHealthcare Traditional Four Tier |
| | | | UnitedHealthcare Traditional Three Tier |
| | | | Unity Health Plan Closed WI HIX |
| | | | Unity Health Plan Open WI HIX |
| | | | Unity Health Plan Standard Four Tier |
| | | | Unity Health Plan Standard Three Tier |
| | | | Univera Healthcare NY HIX |
| | | | Universal Rx Focus Drug Formulary |
| | | | Universal Rx Outcomes Drug Formulary |
| | | | University Health Alliance 3 Tier |
| | | | University Hospitals |
| | | | University of Arkansas 3 Tier |
| | | | University of Colorado |
| | | | University of KY 3 TIER |
| | | | University of Michigan Formulary |
| | | | University of Minnesota UPlan Formulary |
| | | | University of Toledo |
| | | | University of Utah HIX |
| | | | UPMC Your Choice For FEHBP |
| | | | US Bank |
| | | | Valley Health Plan HIX CA |
| | | | Vanderbilt University |
| | | | Vantage Health Plan LA |
| | | | Ventegra Preferred Formulary |
| | | | Ventegra Premium Formulary |
| | | | Ventegra Premium Plus Formulary |
| | | | Ventura County Health Care Plan |
| | | | Virginia Premier |
| | | | Virginia Premier Elite |
| | | | VIVA Essential Health Benefit Formulary |
| | | | VIVA Essential Health Benefit Formulary with Value Generics |
| | | | VIVA Health Advanced Formulary |
| | | | VIVA Health Advanced Formulary with Value Generics |
| | | | Viva Health Alabama |
| | | | Viva Health UAB |
| | | | VRx Commercial Formulary |

| 395 MEDICAID FORMULARIES | State | 656 MEDICARE ADVANTAGE FORMULARIES | 870 COMMERCIAL FORMULARIES |
|---------------------------------|--------------|---|--|
| | | | Walmart Associates Formulary |
| | | | Walmart Generics Program |
| | | | WellCare of Kentucky HIX |
| | | | WellCare of New York HIX |
| | | | WellDyneRx Formulary |
| | | | Wellmark Blue Rx Preferred 3 Tier with Specialty |
| | | | Wellmark Blue Rx Preferred 4 Tier with Specialty |
| | | | West Virginia PEIA |
| | | | Western Health Advantage Commercial |
| | | | Western Health Advantage HIX CA |
| | | | Wexford Health Corporate Formulary |
| | | | Whirlpool Corporation |
| | | | Wisconsin Diagnostic Laboratories |
| | | | Wisconsin Physician Services |
| | | | Yale University Health Plan |
| | | | Zoom Health OR HIX |