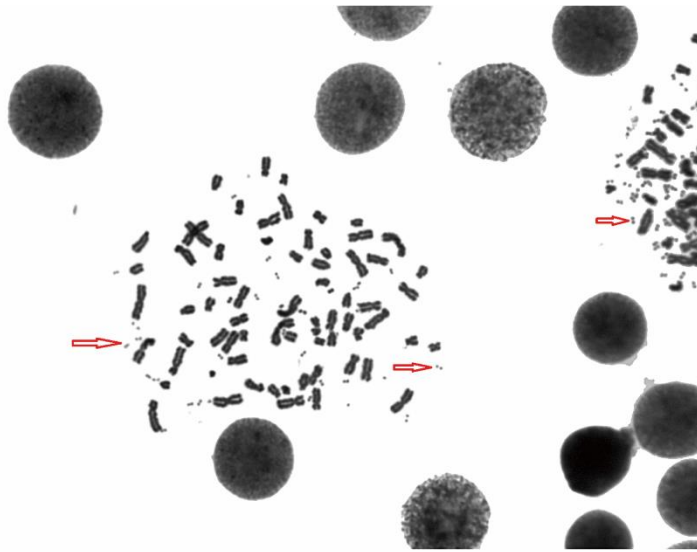
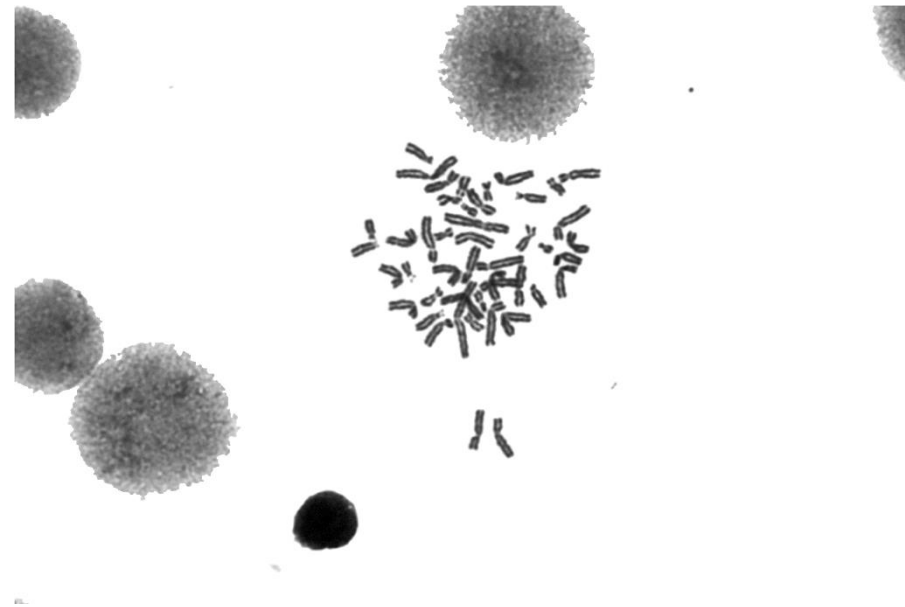


Supplementary 1: Karyotyping analysis reveals the presence of extrachromosomal DNA

A



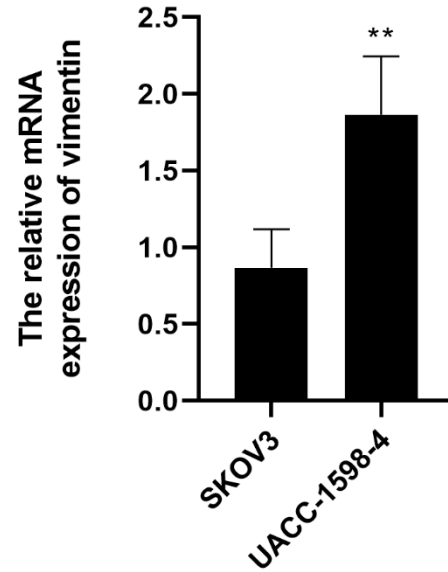
B



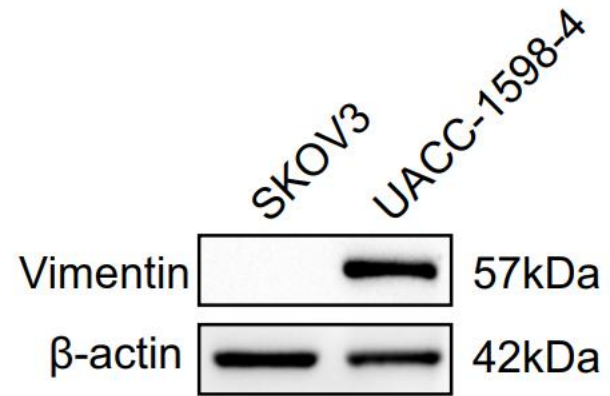
Karyotyping analysis reveals the presence of extrachromosomal DNA in the UACC-1598-4 cell line(A) (shown by an arrow), SKOV3(B)

Supplementary 2: The expression of Vimentin (marker for mesothelial cells) in UACC-1598-4.

A



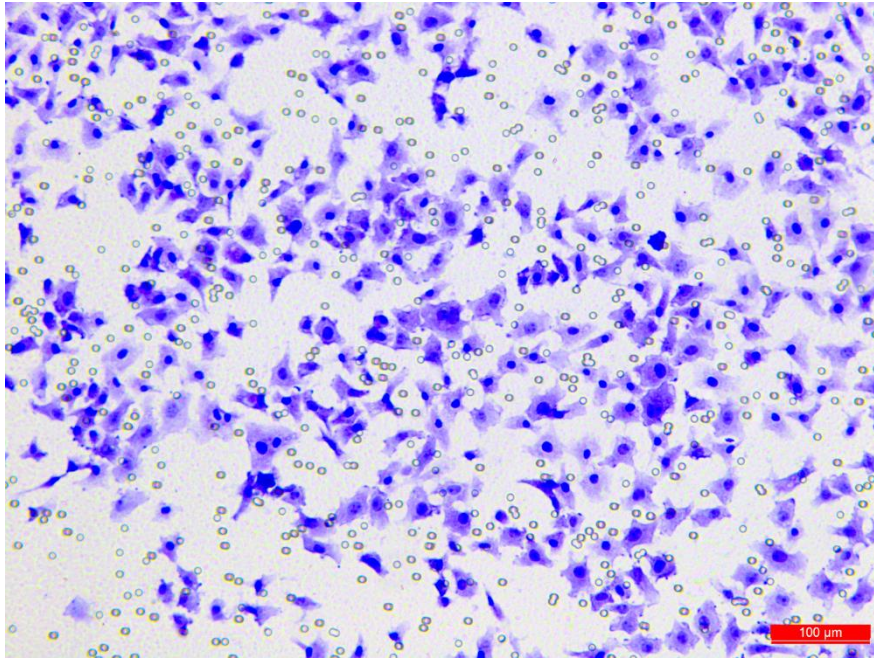
B



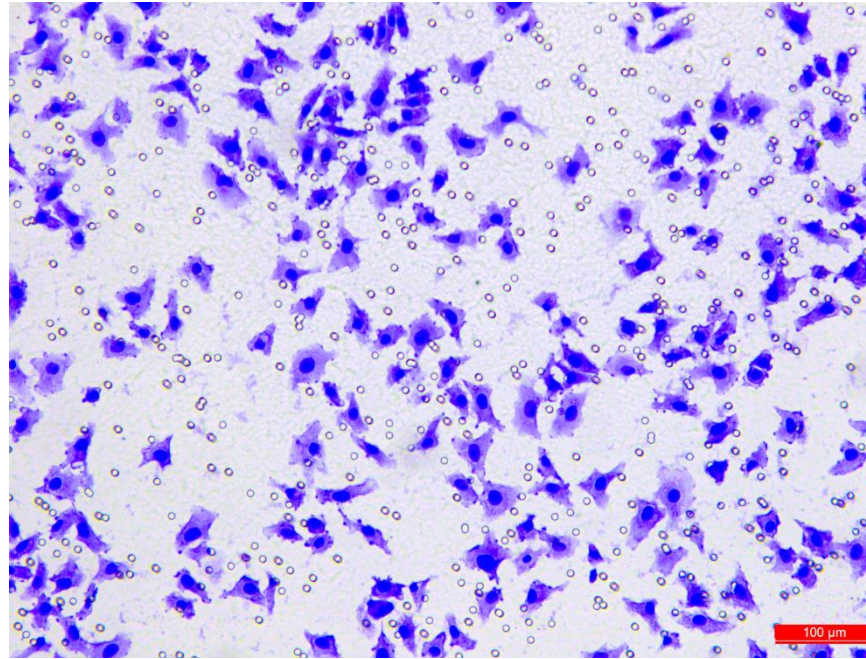
(A) The relative mRNA expression of Vimentin. (B) The protein level of Vimentin

### Supplementary 3: Migration and invasion of UACC-1598-4 and SKOV3

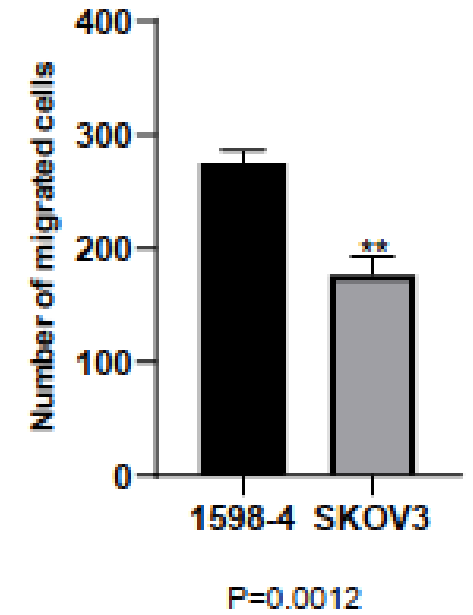
A



B

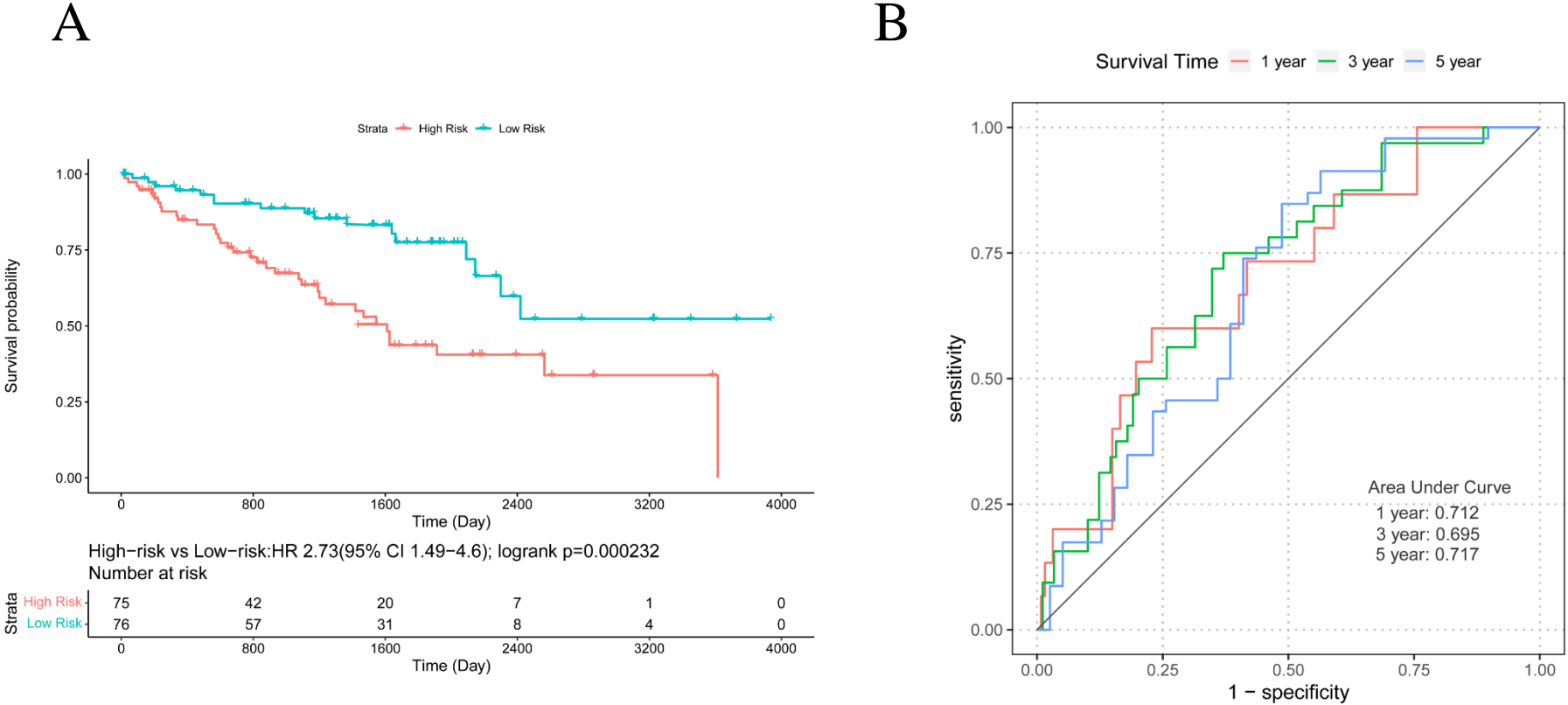


C



.(A) UACC-1598-4.(B) SKOV3.(C)Number of migrated cells of 1598-4 and SKOV3.

Supplementary 4: Validation of model prediction effectiveness in GEO dataset GSE72094



(A) Kaplan-Meier survival curve between high and low-risk groups. (B).Kaplan-Meier survival curve between high and low-risk groups.