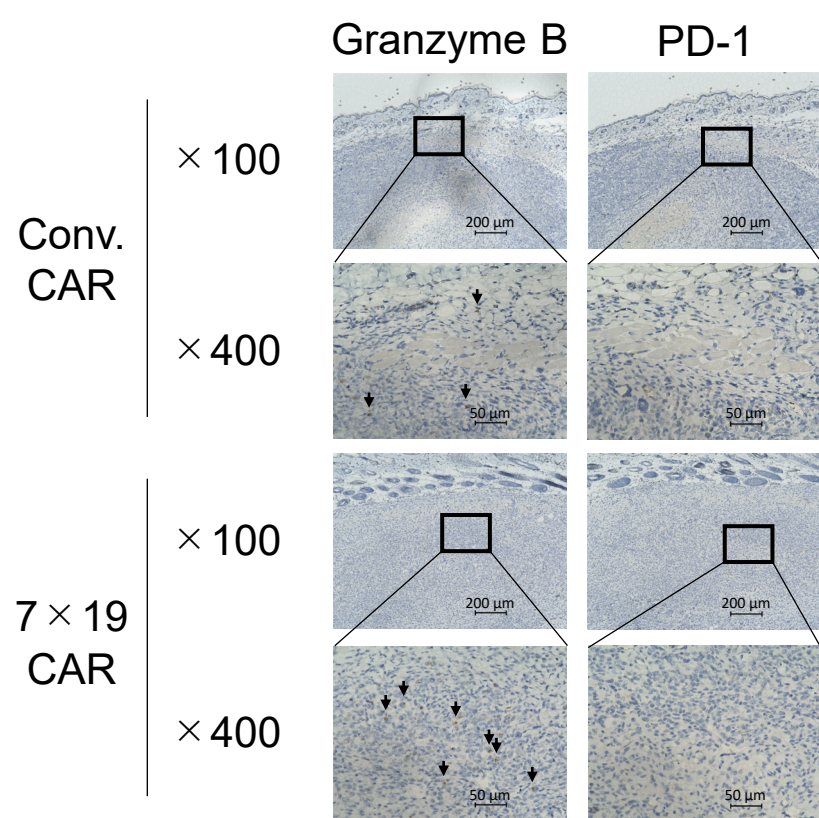


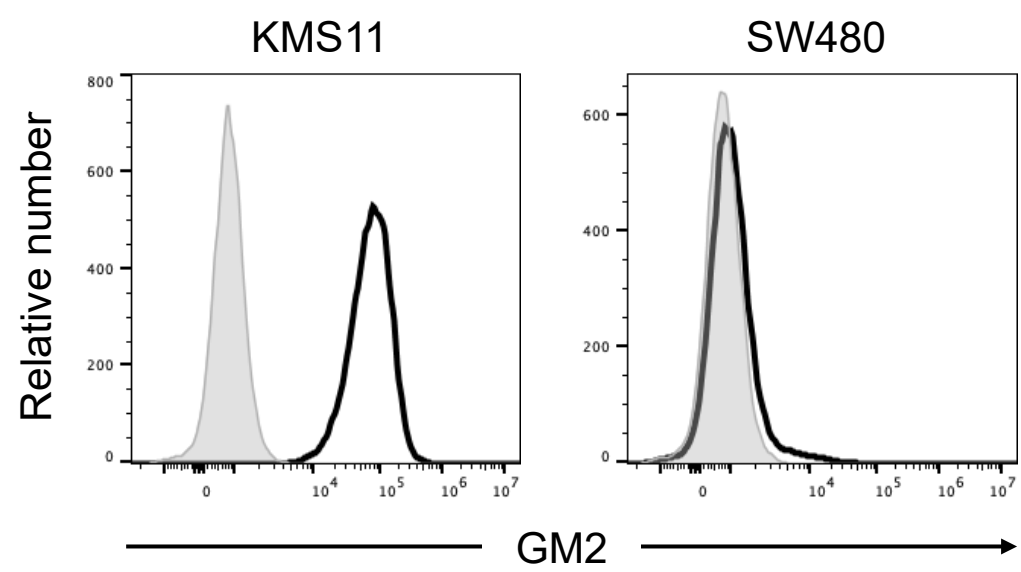
# Supplementary Figure 1



**Supplementary Figure 1.** Expression of Granzyme B and PD-1 on T cells in tumor tissues.

NOG- $\Delta$ MHC mice were inoculated s.c. with  $1 \times 10^7$  Lu-135 cells on day 0, followed by treatment with i.v. injection of  $1 \times 10^7$  Conv. CAR-T or  $7 \times 19$  CAR-T cells on day 3. Tumor tissues were resected from the mice on day 12, and FFPE slices were prepared from each tumor tissue and stained with IHC. In IHC staining, rabbit anti-human Granzyme B polyclonal Ab and mouse anti-human PD-1 mAb were used. Stained cells were visualized and observed by microscopic examinations at  $\times 100$  and  $\times 400$  magnifications. Representative images are displayed. Arrow indicates Granzyme B-positive cells. Scale bar indicates a length of 200  $\mu\text{m}$  ( $\times 100$ ) or 50  $\mu\text{m}$  ( $\times 400$ ).

# Supplementary Figure 2



**Supplementary Figure 2.** Surface expression of GM2 on KMS11 and SW480. Expression levels of GM2 on KMS11, a human multiple myeloma cell line, and SW480, a human colon tumor cell line, were assessed by flow cytometry. Open and filled histograms indicate staining with humanized anti-GM2 Ab and non-staining, followed by anti-human IgG Ab, respectively.