



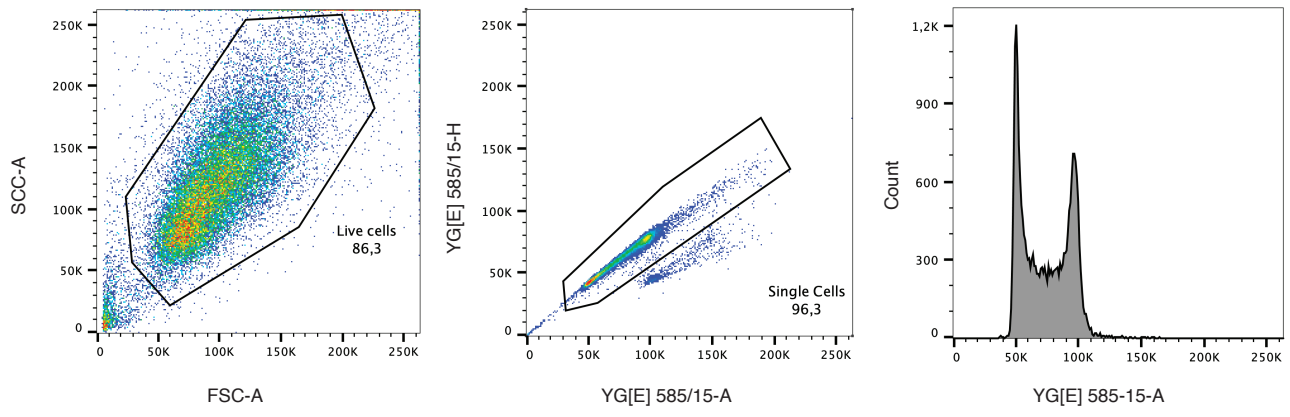
---

# Structural basis of centromeric cohesion protection

---

In the format provided by the authors and unedited

a



**Supplementary Figure 1. FACS gating strategy.**

a, FACS gating strategy for generation of DNA content histograms as used in in Extended Data Figure 6. Live cells were gated based on FCS/SCC (left), and single cells were gated based on 585/15-A and 585/15-H (middle). Histogram shows the DNA content per cell (585/15-A and count) (right).