

Supplemental Figure S2

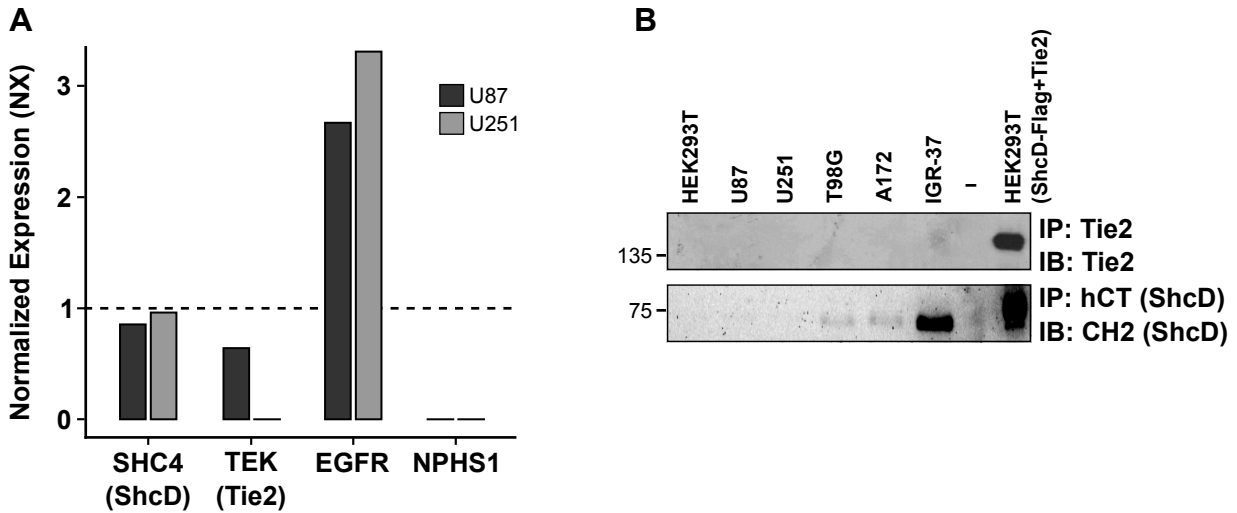


Figure S2: ShcD and Tie2 are expressed at low levels in glioma cells. (A) mRNA expression data from the Human Protein Atlas (HPA) showing low ShcD and Tie2 expression in U87 and U251 malignant glioma cell lines. For comparison, EGFR and nephrin (NPHS1) are included as positive and negative controls respectively. Dotted line indicates detection threshold. (B) Western blot profiling expression of ShcD and Tie2 endogenous proteins in different human glioma cell lines: U87, U251, T98G, and A172, as well as HEK293T (negative control for both) and IGR37, a human melanoma cell line which expresses high levels of endogenous ShcD. HEK293T cells transfected with Tie2 and ShcD-Flag (from Fig. 2A) were also used as a positive control. Hyphen represents a blank lane. IP: Immunoprecipitation; IB: Immunoblot.