

Supplemental Figure S4

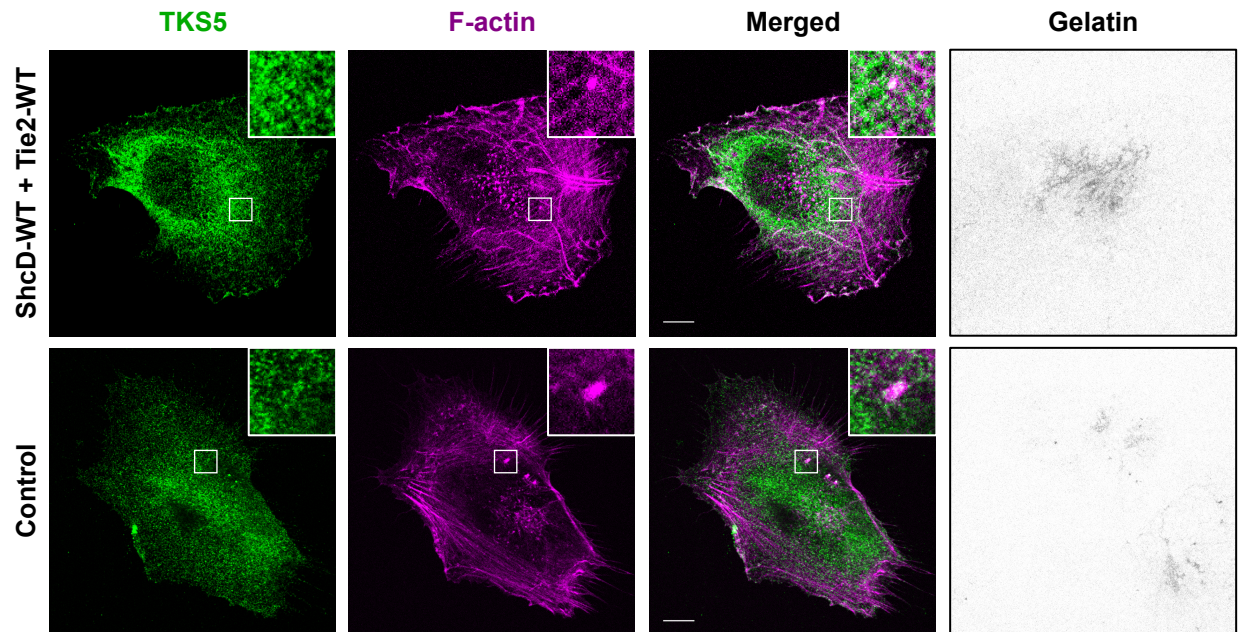


Figure S4: Localization of TKS5 with F-actin punctae in U87 cells expressing both wild-type ShcD and Tie2. Confocal images of stable U87 cells showing enhanced localization of the invadopodia marker TKS5 (green) near F-actin punctae (magenta) in cells expressing both wild-type ShcD and wild-type Tie2 compared to control cells expressing vector alone. This is concordant with enhanced gelatin degradation (right most panel) in cells co-expressing ShcD-WT and Tie2-WT as compared to control cells. Scale bar: 10 μm .