

Supplemental Figure S5

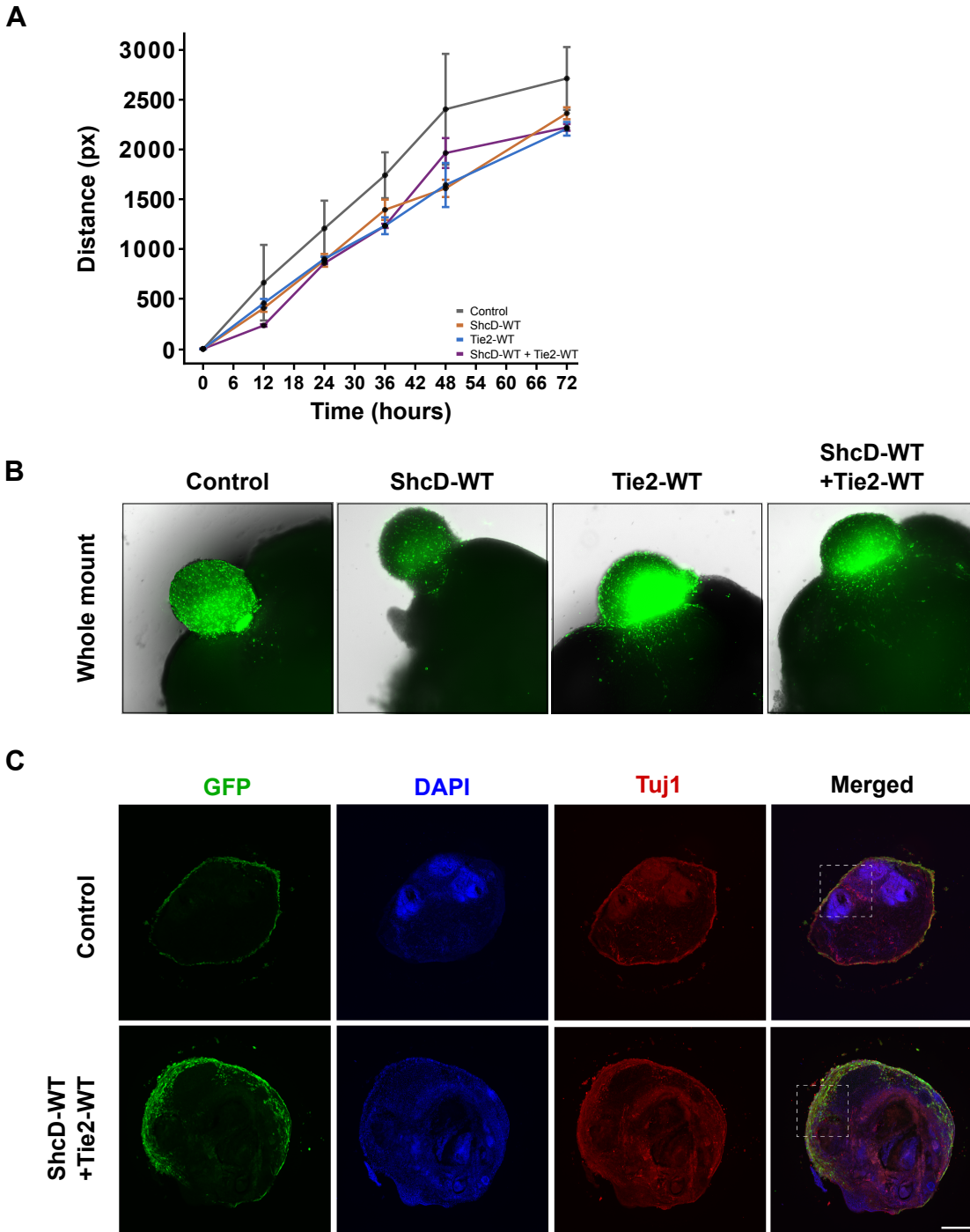


Figure S5: U87-derived spheroids co-expressing ShcD and Tie2 readily attach to cerebral organoids. (A) Line graph showing comparable out-migration distances of spheroids on gelatin in all four cell lines. Distance is calculated as the distance travelled by individual cells away from the spheroid periphery. (B) Spheroids (green) generated from all four cell lines attached and migrated across cerebral organoid surfaces (black). (C) Representative immunofluorescence images showing the interface of GFP-positive tumor cells (green) with Tuj1-positive organoids (red). Higher magnification images of boxed regions are shown in **Fig. 5D**. Scale bar: 200 μ m.