

Supplemental Figure S6

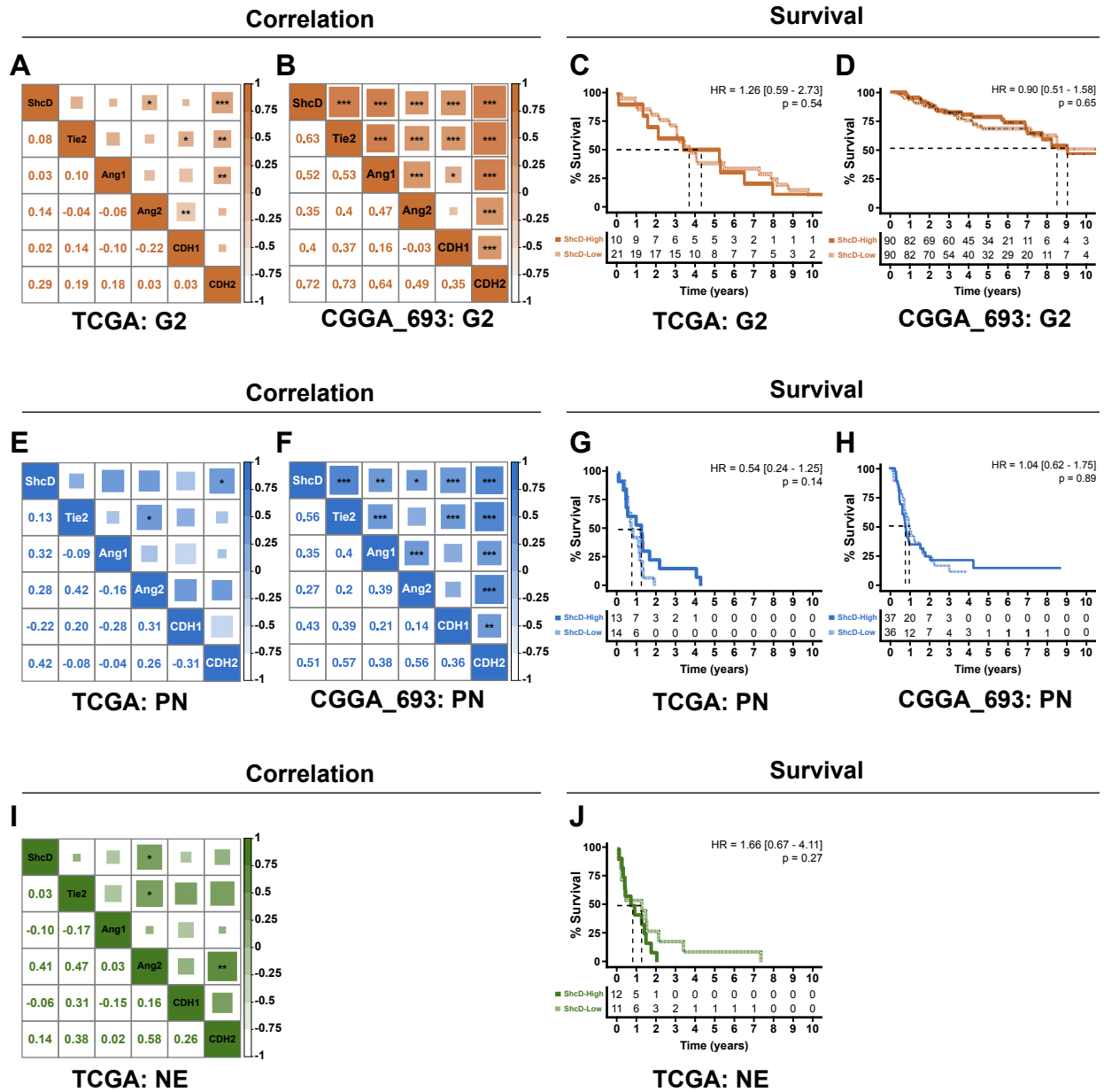


Figure S6: ShcD mRNA expression is highly correlated with Ang2 and N-cadherin in advanced gliomas and mesenchymal subtype GBM in TCGA and CGGA_693 datasets. (A,B,E,F,I) Correlation analysis of ShcD mRNA expression with components of the Tie2 signaling pathway and EMT markers in Grade 2 or Proneural and Neural subtypes in TCGA and CGGA_693 datasets. Lower triangles represent Pearson's correlation coefficients. Upper triangles represent *P*-values indicating significance of correlation for each pair. The size of shaded squares is inversely proportional to *P*-values, and is also indicated with * where significant. **(C,D,G,H,J)** Analysis of overall survival over a 10-year period for patients with high or low levels of ShcD expression from classifications above. G2: Grade 2; PN: Proneural; NE: Neural; **P* < 0.05; ***P* < 0.01; ****P* < 0.001.