

Supplemental Table 1:

Abbreviation	Parameter Definition	Unit	
CV	Coefficient of variation (CV = SD/mean x 100) of the R-R interval	%	percent
HR	Heart rate	bpm	beats per minute
HRV	Heart rate variability	bpm	beats per minute
mean R-amplitude	Average (mean) amplitude of the R wave from all R-waves in the measurement	mV	millivolt
mean SR-amplitude	Average (mean) amplitude of the SR wave from all SR-waves in the measurement	mV	millivolt
pNN5	The fraction of consecutive NN intervals that differ by more than 5 ms	counts	counts
PQ interval	Time from the start of the P-wave to the beginning of Q-wave	ms	milliseconds
PR interval	Time from the start of the P-wave to the peak of the QRS-complex	ms	milliseconds
QRS complex	Duration of the QRS-complex	ms	milliseconds
QT interval	Time from the onset of the Q-wave to the end of the T-wave	ms	milliseconds
QTc	QT corrected for HR (applying the Mitchell formula)	ms	milliseconds
QTc dispersion	Maximum QT-interval minus minimum QT-interval corrected for HR	ms	milliseconds
rMSSD	Root Mean Square of Successive Differences	ms	milliseconds
RR interval	Interval between successive R-peaks	ms	milliseconds
ST interval	End point of S wave to start point of T wave	ms	milliseconds

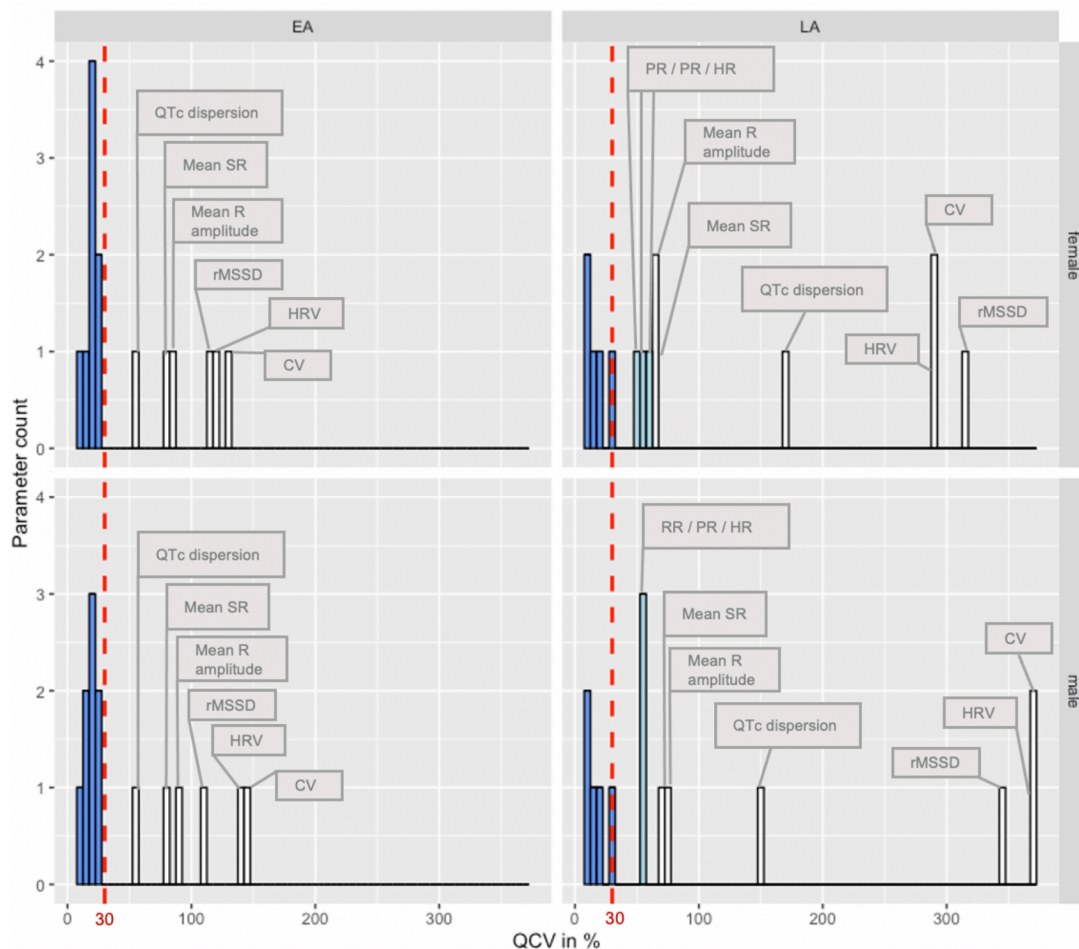
Supplemental Table 2:

		FEMALE						
		<i>Conscious</i>		<i>Isoflurane</i>		<i>Tribromoethanol</i>		
		EA	LA	EA	LA	EA		
Parameter		mean ± sd (n)	mean ± sd (n)	mean ± sd (n)	mean ± sd (n)	mean ± sd (n)		
Heart Rate [bpm]		753 ± 41.6 (9238)	745.8 ± 25.4 (620)	413 ± 55.8 (2670)	439.5 ± 49.5 (693)	442.4 ± 49.4 (226)		No LA data available
PR [ms]		28.3 ± 3.7 (9240)	26.4 ± 4.8 (620)	46.9 ± 10.5 (2664)	46.2 ± 7.1 (692)	49.4 ± 4.1 (225)		
QRS [ms]		10.9 ± 1.6 (9238)	11.8 ± 1.7 (620)	11.2 ± 3.2 (2672)	10.7 ± 2.2 (693)	13.4 ± 1.8 (217)		
QT [ms]		41.8 ± 2.4 (1840)	43 ± 2.4 (306)	54.5 ± 12.8 (1106)	52.5 ± 10 (179)	54.7 ± 9.4 (225)		
RR [ms]		80.1 ± 5 (9239)	80.6 ± 2.8 (619)	148.4 ± 22.7 (2670)	138.4 ± 16.5 (693)	137.1 ± 16.2 (225)		
ST [ms]		29.9 ± 5.2 (8012)	32 ± 2.2 (468)	42.6 ± 12.8 (713)	40.4 ± 8.2 (18)	43.8 ± 9.1 (209)		
QTc Mitchell [ms]		47.2 ± 2.4 (1839)	48.1 ± 2.4 (305)	43.9 ± 8.6 (1104)	44.9 ± 8.4 (179)	46.7 ± 6.3 (224)		
		MALE						
		<i>Conscious</i>		<i>Isoflurane</i>		<i>Tribromoethanol</i>		
		EA	LA	EA	LA	EA		
Parameter		mean ± sd (n)	mean ± sd (n)	mean ± sd (n)	mean ± sd (n)	mean ± sd (n)		
Heart Rate [bpm]		758.9 ± 39.7 (9237)	750.3 ± 24.8 (588)	419.8 ± 61.4 (2598)	443 ± 60.2 (610)	422.7 ± 57.7 (220)		No LA data available
PR [ms]		28.1 ± 3.5 (9238)	26.3 ± 4.8 (589)	44.8 ± 8.4 (2590)	44.8 ± 6 (600)	48 ± 3.6 (219)		
QRS [ms]		10.8 ± 1.6 (9237)	11.9 ± 1.7 (588)	11.1 ± 3.4 (2598)	10.6 ± 2.5 (610)	13.5 ± 1.7 (214)		
QT [ms]		41.6 ± 2.3 (1825)	43.1 ± 2.4 (296)	55.1 ± 12.7 (1140)	51.4 ± 7.8 (185)	56.7 ± 8.4 (219)		
RR [ms]		79.4 ± 4.8 (9238)	80.1 ± 2.8 (588)	146.3 ± 23.8 (2597)	138.1 ± 19.6 (610)	144.5 ± 18.9 (220)		
ST [ms]		29.8 ± 5.2 (8003)	32 ± 2.1 (439)	44.1 ± 13.4 (741)	38.5 ± 1.9 (17)	46.4 ± 8.3 (206)		
QTc Mitchell [ms]		47.2 ± 2.4 (1825)	48.3 ± 2.3 (295)	45.2 ± 8.3 (1140)	45.5 ± 6.8 (185)	47.3 ± 6.1 (219)		

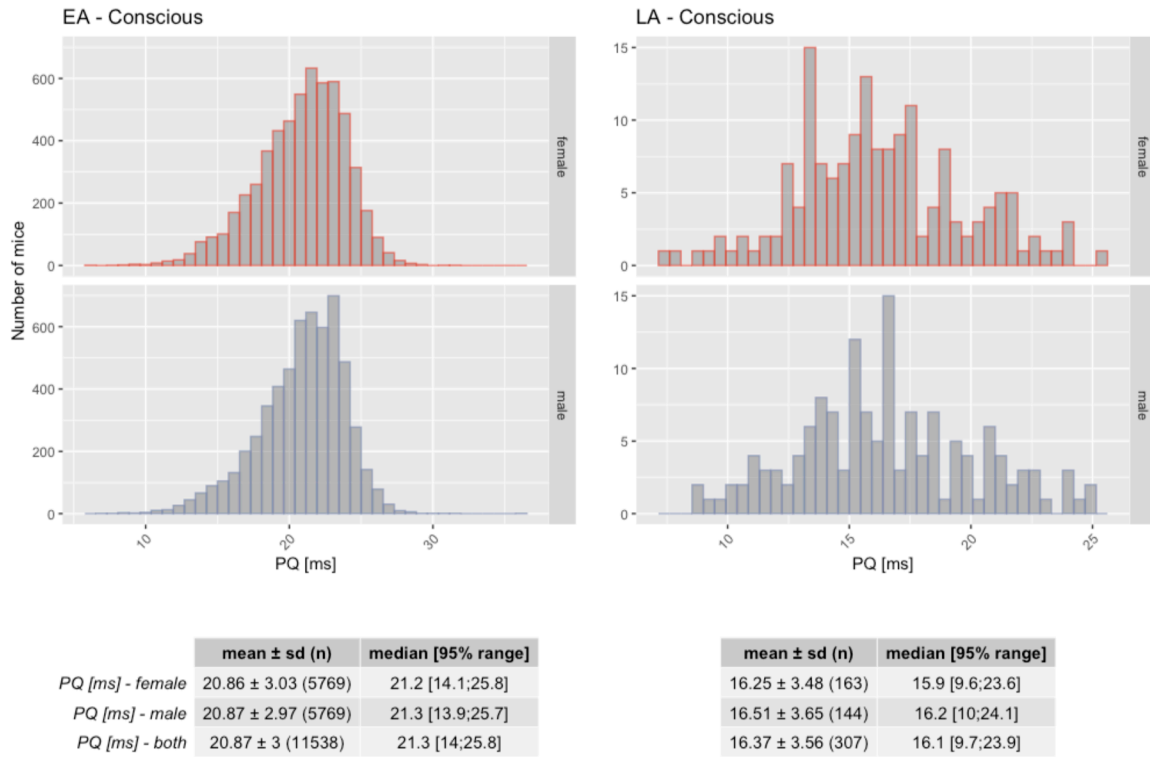
Supplemental Table 3:

Combined FEMALE and MALE							
Conscious		Isoflurane		Tribromoethanol			
Parameter	EA	LA	EA	LA	EA		
	median [95% range]	median [95% range]	median [95% range]	median [95% range]	median [95% range]		
Heart Rate [bpm]	762 [653.9;817.6]	750 [700.1;792.9]	419 [295;524.1]	441.4 [335.2;540.3]	430 [334.3;558.2]	No LA data available	
PR [ms]	28.6 [20.4;35.5]	26 [18.2;35]	43.8 [30.7;68.7]	45.6 [31.2;56.7]	48.4 [41.6;57.4]		
QRS [ms]	10.7 [8.3;14.7]	11.8 [8.4;15.7]	10 [7;18.7]	10.1 [7.1;16.8]	13.3 [10.8;17]		
QT [ms]	41.9 [36.5;45.7]	43.3 [37.8;46.4]	52.4 [36.2;87.8]	51.6 [30.3;70.4]	54.3 [41.6;75.8]		
RR [ms]	78.8 [73.4;92.3]	80 [75.7;86.1]	143.3 [114.5;203.3]	135.9 [111.1;179.5]	139.5 [107.4;178.3]		
ST [ms]	30.7 [12.8;35.7]	32.2 [27;35.3]	40.3 [24.8;78.6]	38.7 [32.1;58.3]	43.7 [30.7;64.8]		
QTc Mitchell [ms]	47.4 [41.8;51.1]	48.6 [42.6;51.7]	42.9 [31.1;64.9]	45.3 [28.6;60.8]	45.8 [36.8;61.5]		
	mean ± sd (n)	mean ± sd (n)	mean ± sd (n)	mean ± sd (n)	mean ± sd (n)	No LA data available	
Heart Rate [bpm]	756 ± 40.8 (18475)	748 ± 25.2 (1208)	416.4 ± 58.7 (5268)	441.2 ± 54.8 (1303)	432.7 ± 54.5 (446)		
PR [ms]	28.2 ± 3.6 (18478)	26.4 ± 4.8 (1209)	45.9 ± 9.6 (5254)	45.6 ± 6.6 (1292)	48.7 ± 3.9 (444)		
QRS [ms]	10.8 ± 1.6 (18475)	11.8 ± 1.7 (1208)	11.2 ± 3.3 (5270)	10.7 ± 2.4 (1303)	13.4 ± 1.7 (431)		
QT [ms]	41.7 ± 2.4 (3665)	43 ± 2.4 (602)	54.8 ± 12.7 (2246)	52 ± 9 (364)	55.7 ± 8.9 (444)		
RR [ms]	79.7 ± 4.9 (18477)	80.4 ± 2.8 (1207)	147.4 ± 23.3 (5267)	138.3 ± 18 (1303)	140.8 ± 18 (445)		
ST [ms]	29.9 ± 5.2 (16015)	32 ± 2.2 (907)	43.3 ± 13.2 (1454)	39.5 ± 6 (35)	45.1 ± 8.8 (415)		
QTc Mitchell [ms]	47.2 ± 2.4 (3664)	48.2 ± 2.3 (600)	44.5 ± 8.5 (2244)	45.2 ± 7.6 (364)	47 ± 6.2 (443)		

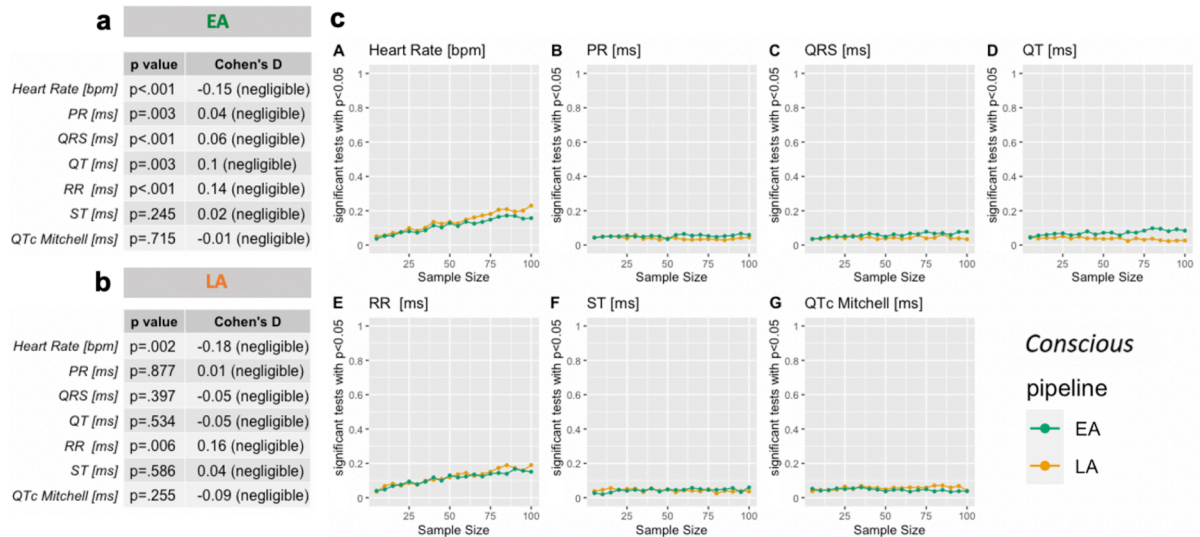
Supplemental Figure 1:



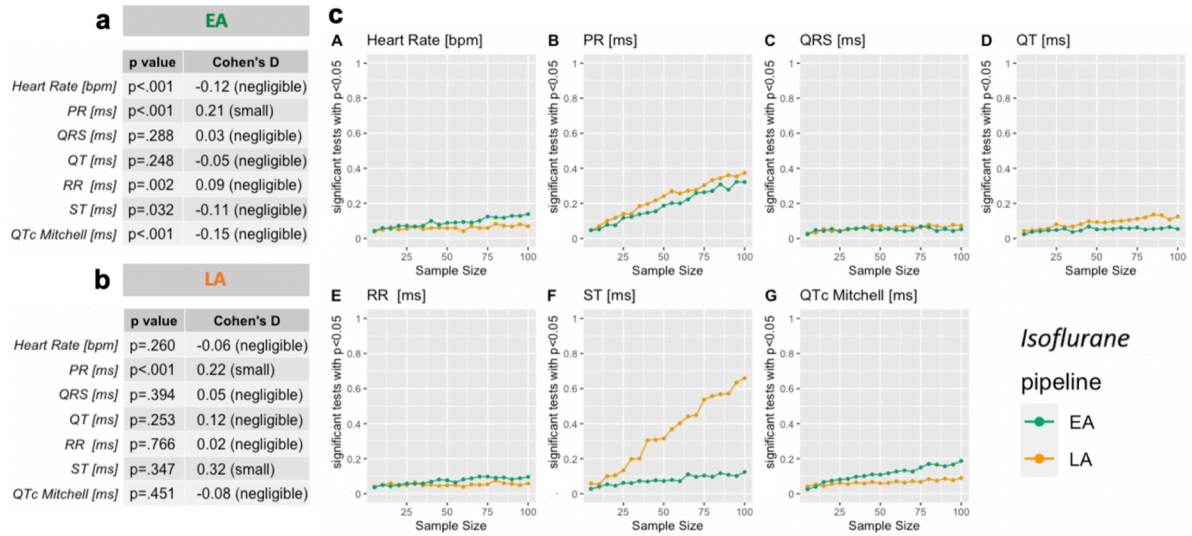
Supplemental Figure 2:



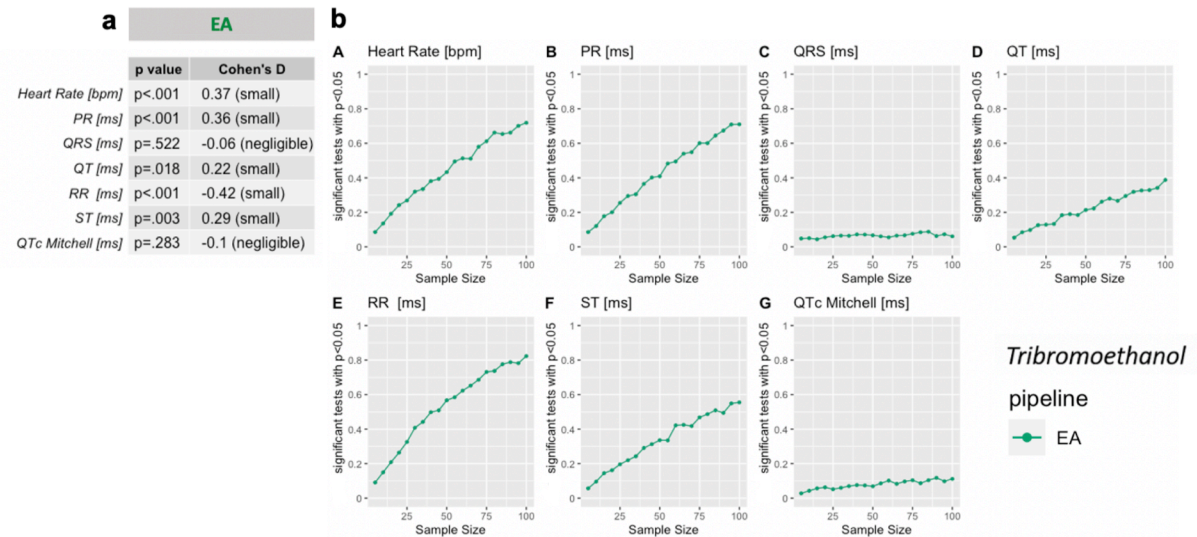
Supplemental Figure 3:



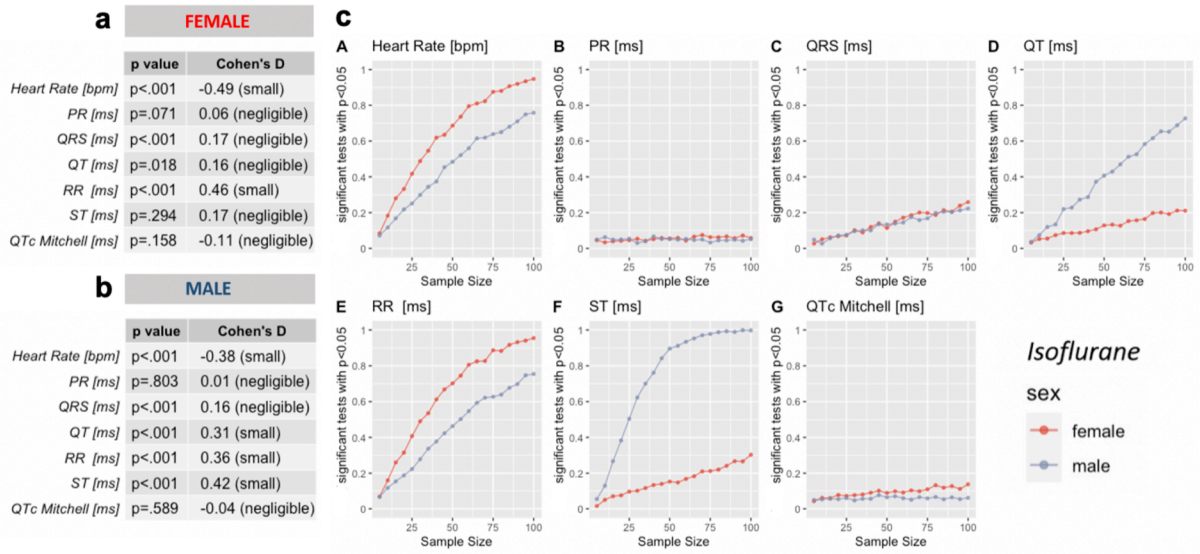
Supplemental Figure 4:



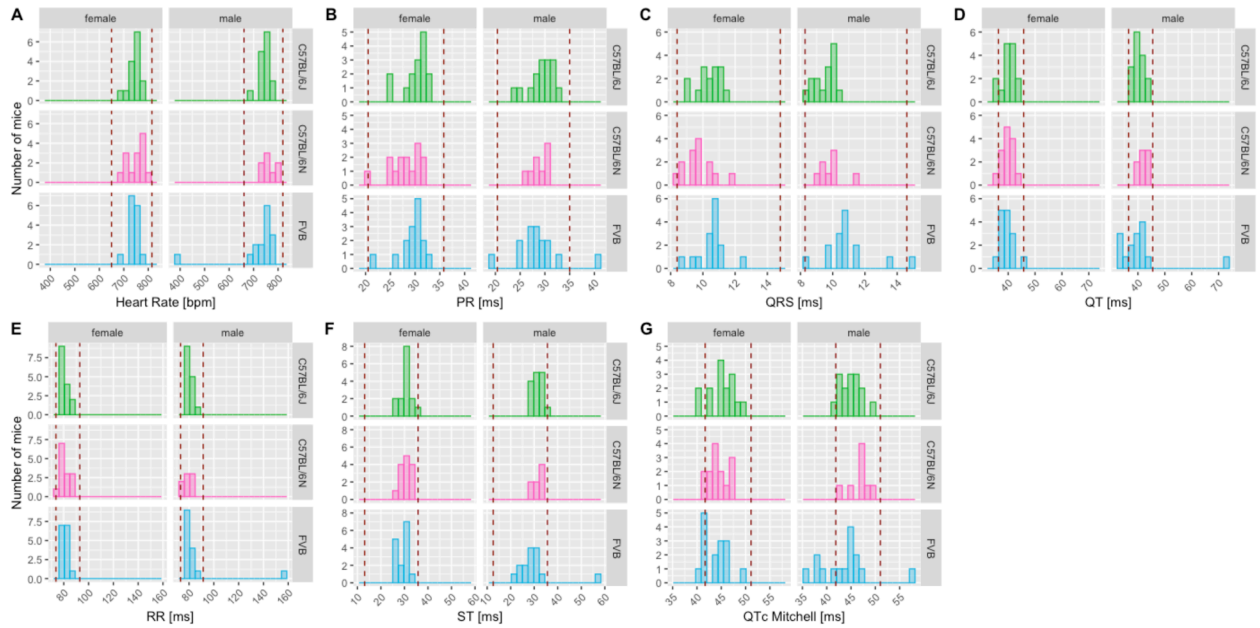
Supplemental Figure 5:



Supplemental Figure 6:



Supplemental Figure 7:



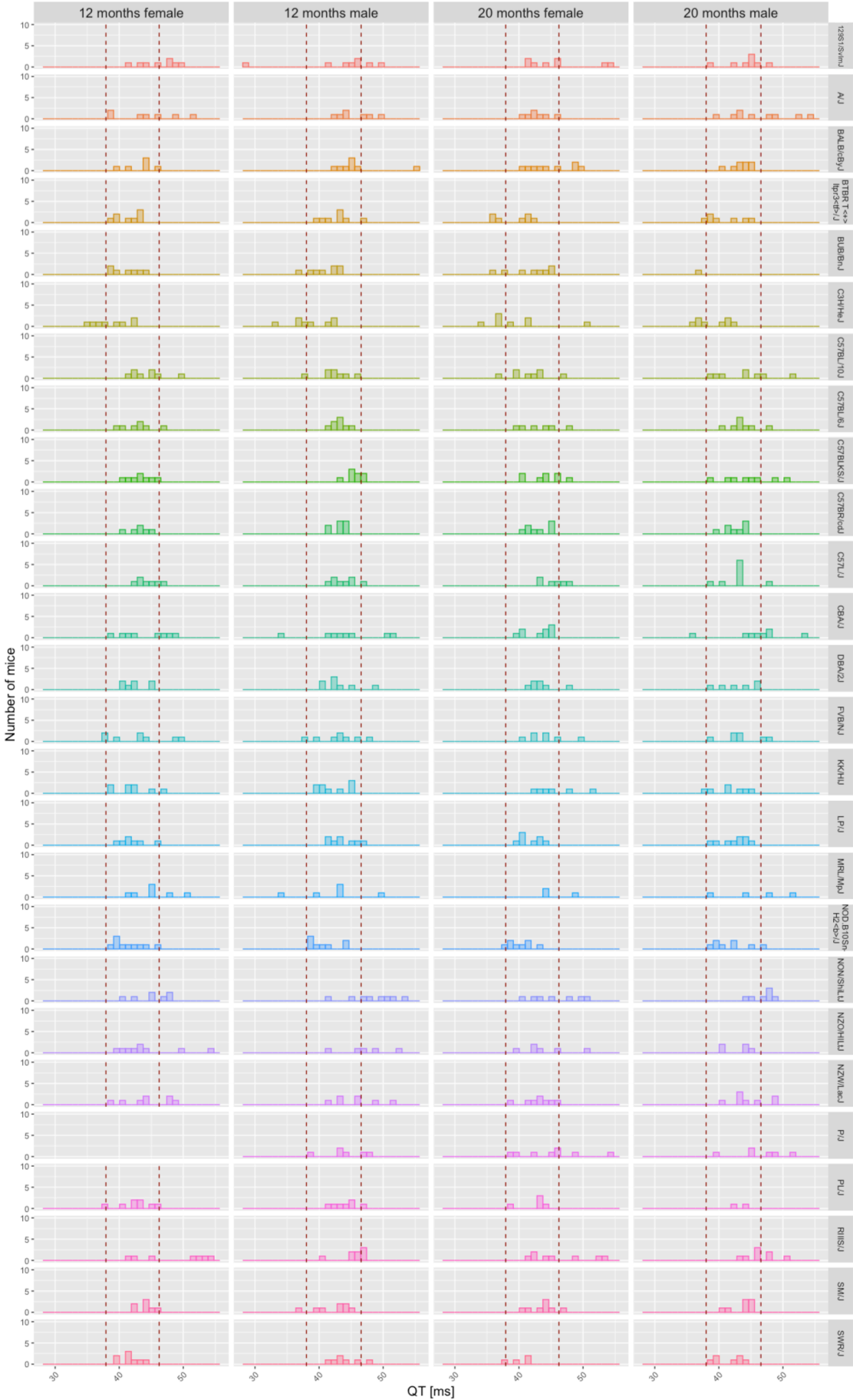
Supplemental Figure 9:



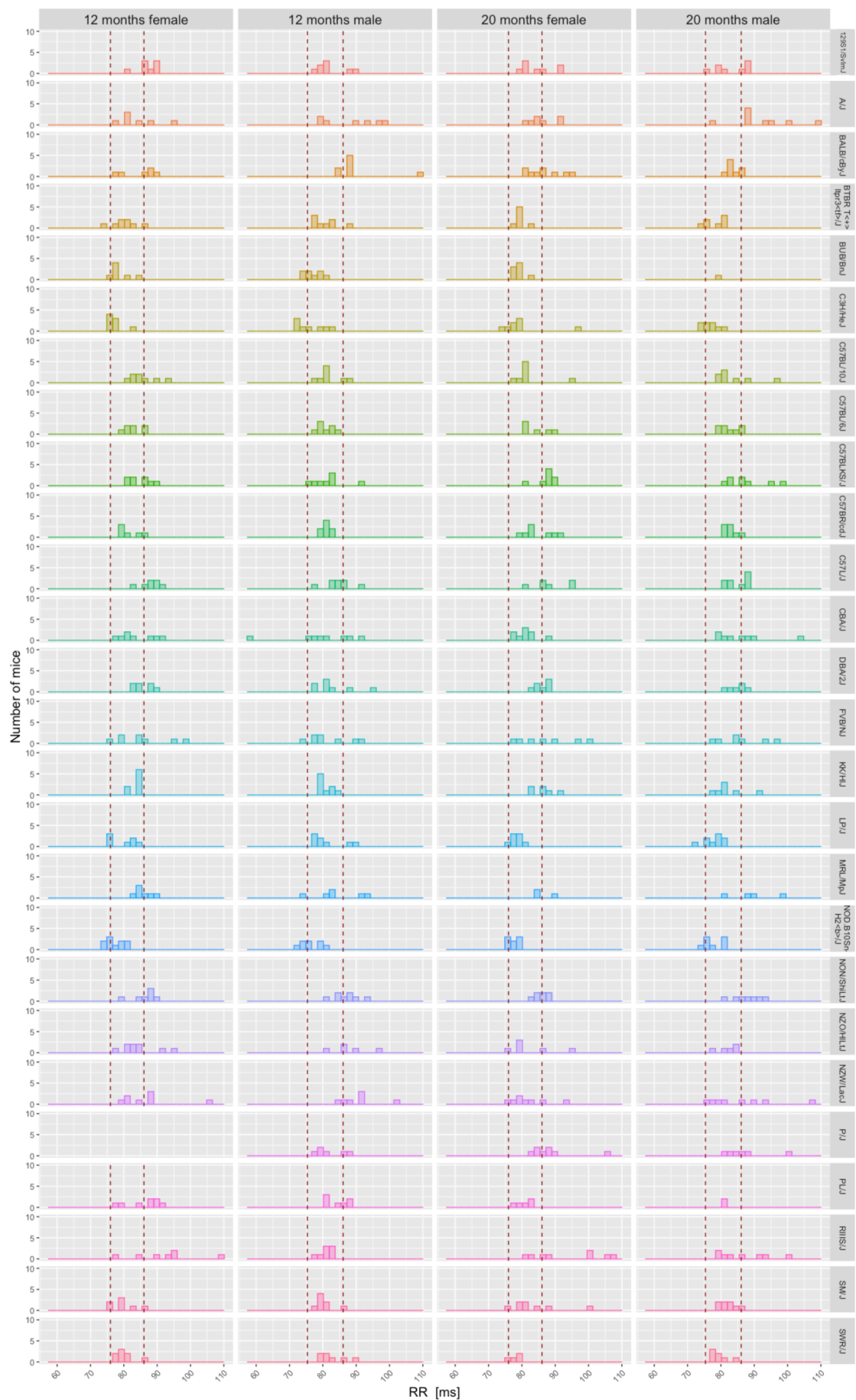
Supplemental Figure 10:



Supplemental Figure 11:



Supplemental Figure 12:



Supplemental Figure 13:

