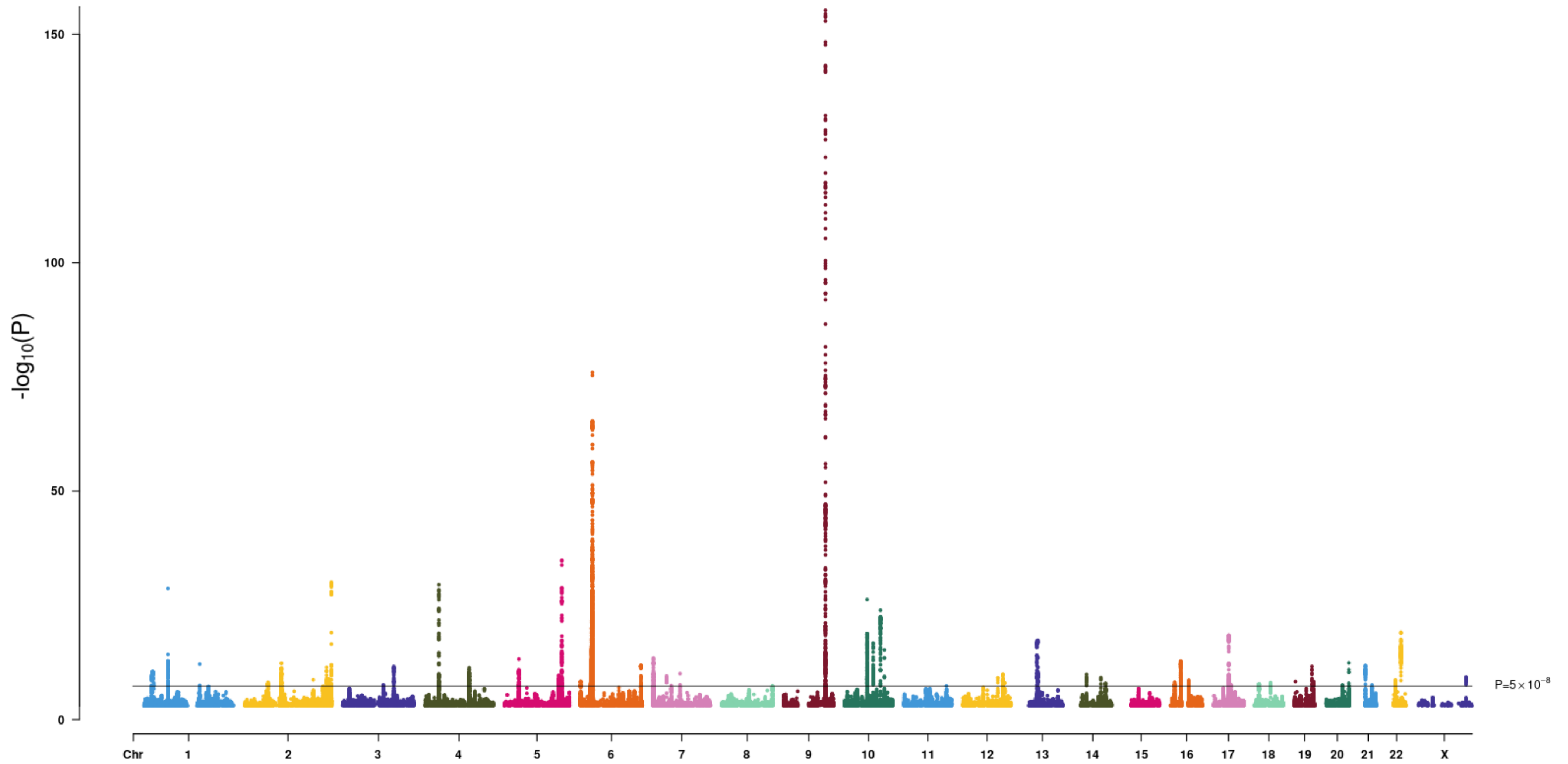
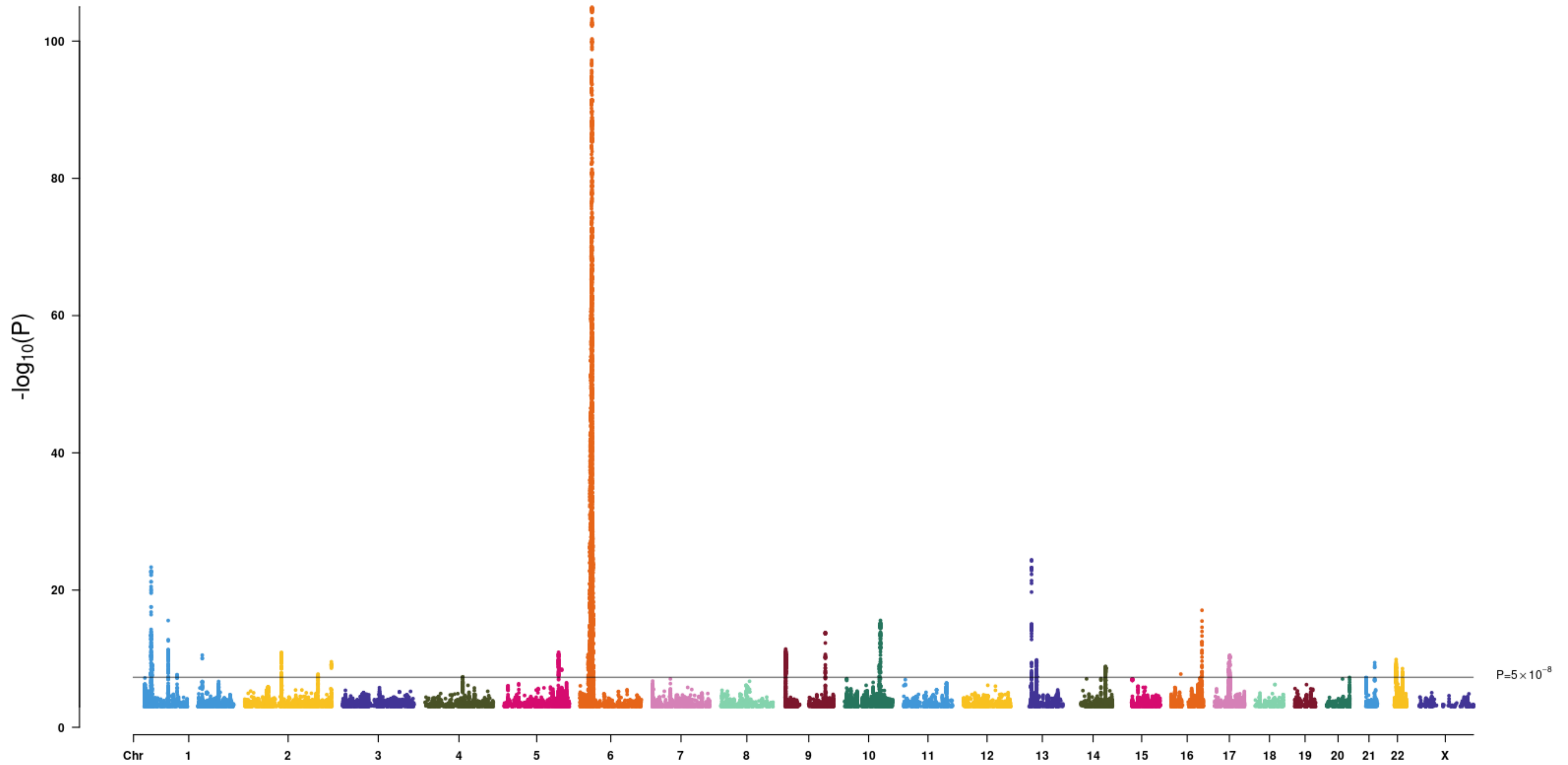


Supplementary Data 1. Manhattan plot for IBD genetic associations. IBD genetic association analyses were performed on East Asian samples (EAS) through the fixed-effect meta-analysis (two-tailed, FE) or East Asian and European samples (EAS+EUR) through FE or Bayesian transethnic meta-analysis (MANTRA). P: original P-value from FE. BF: Bayes Factor from MANTRA. Horizontal line: the genome-wide significance threshold ($P < 5 \times 10^{-8}$) for FE or the genome-wide Bayes Factor (BF) threshold ($BF > 10^6$) for MANTRA.

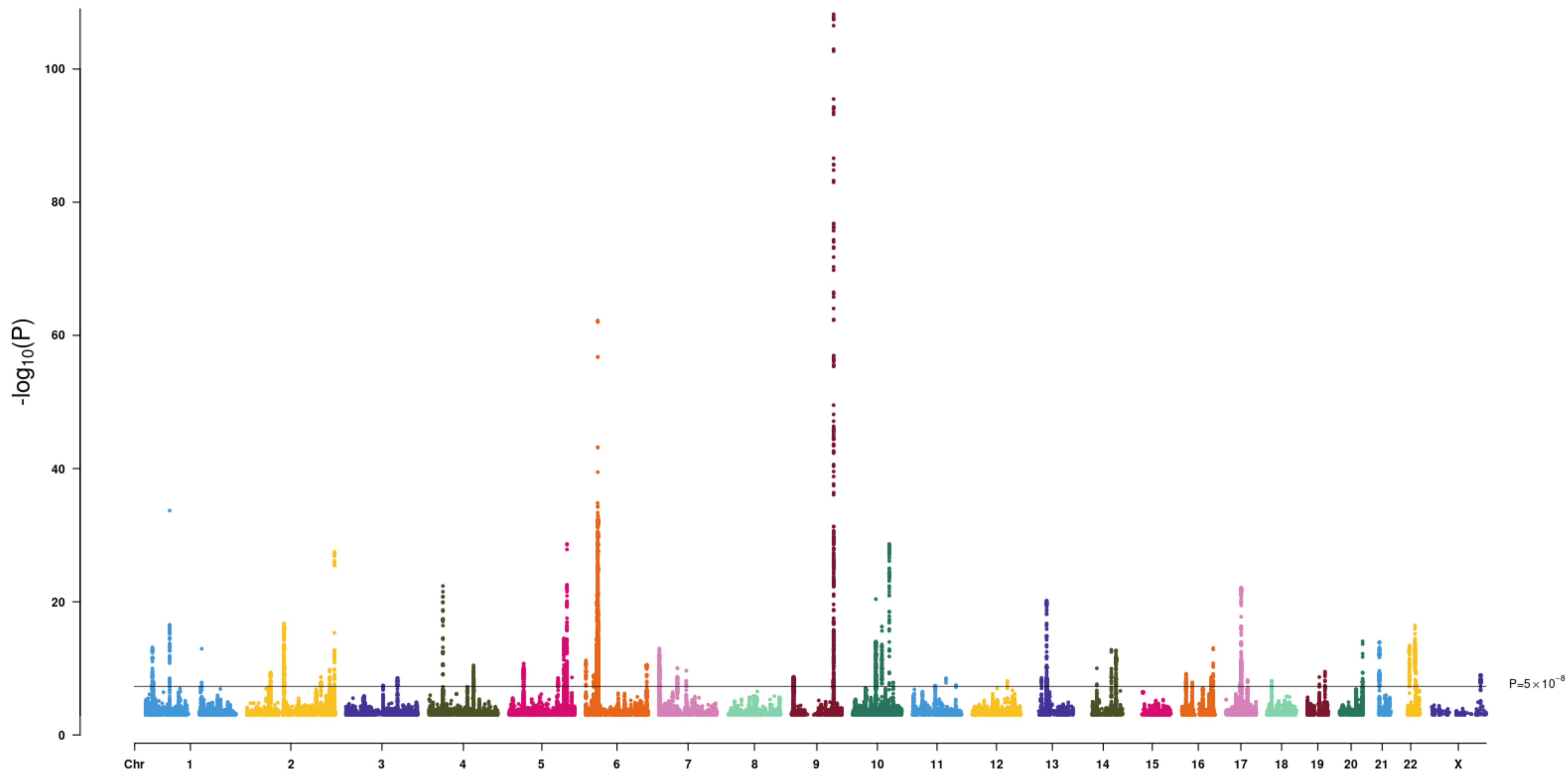
EAS CD



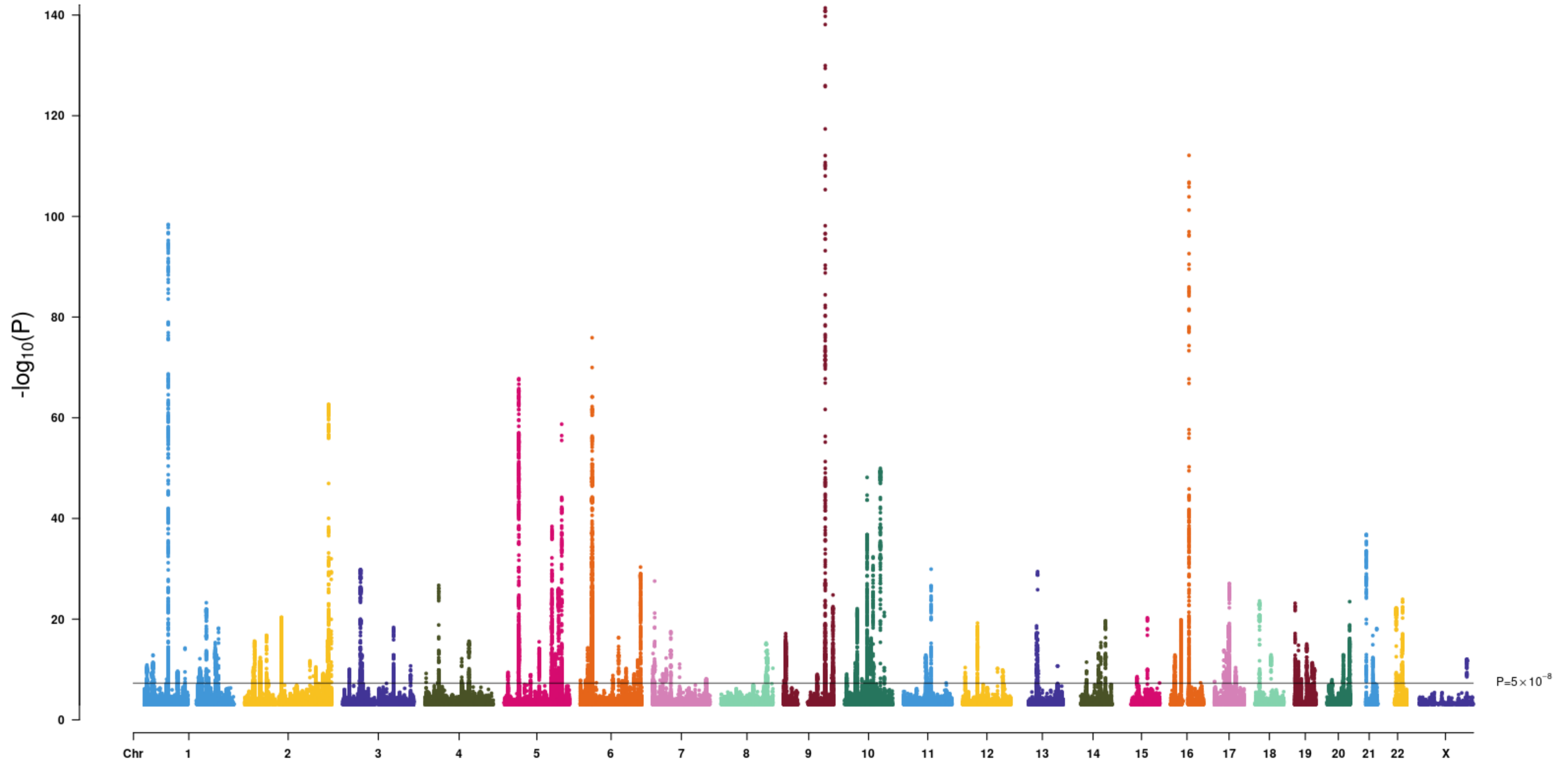
EAS UC



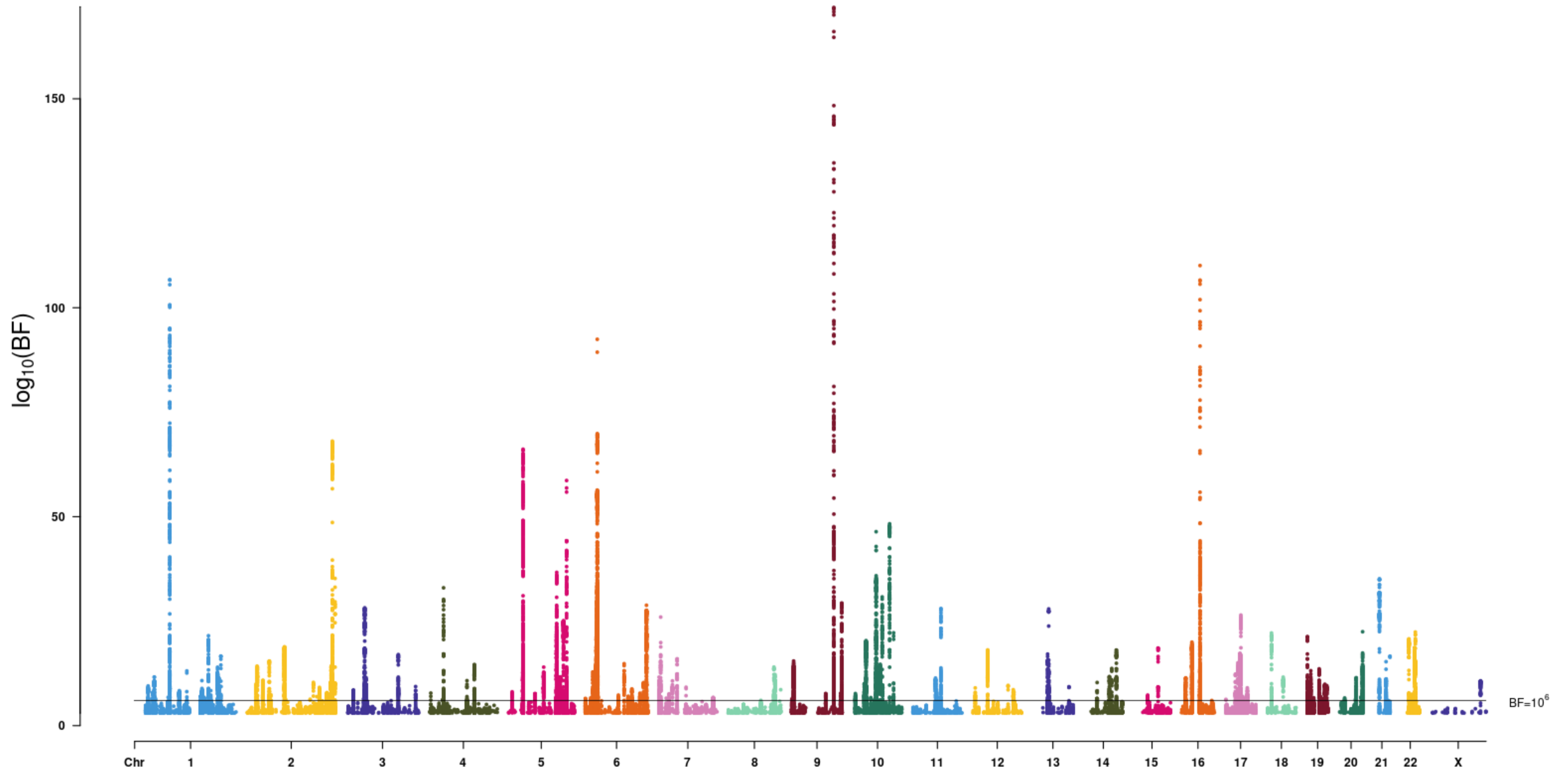
EAS IBD



EAS+EUR CD FE



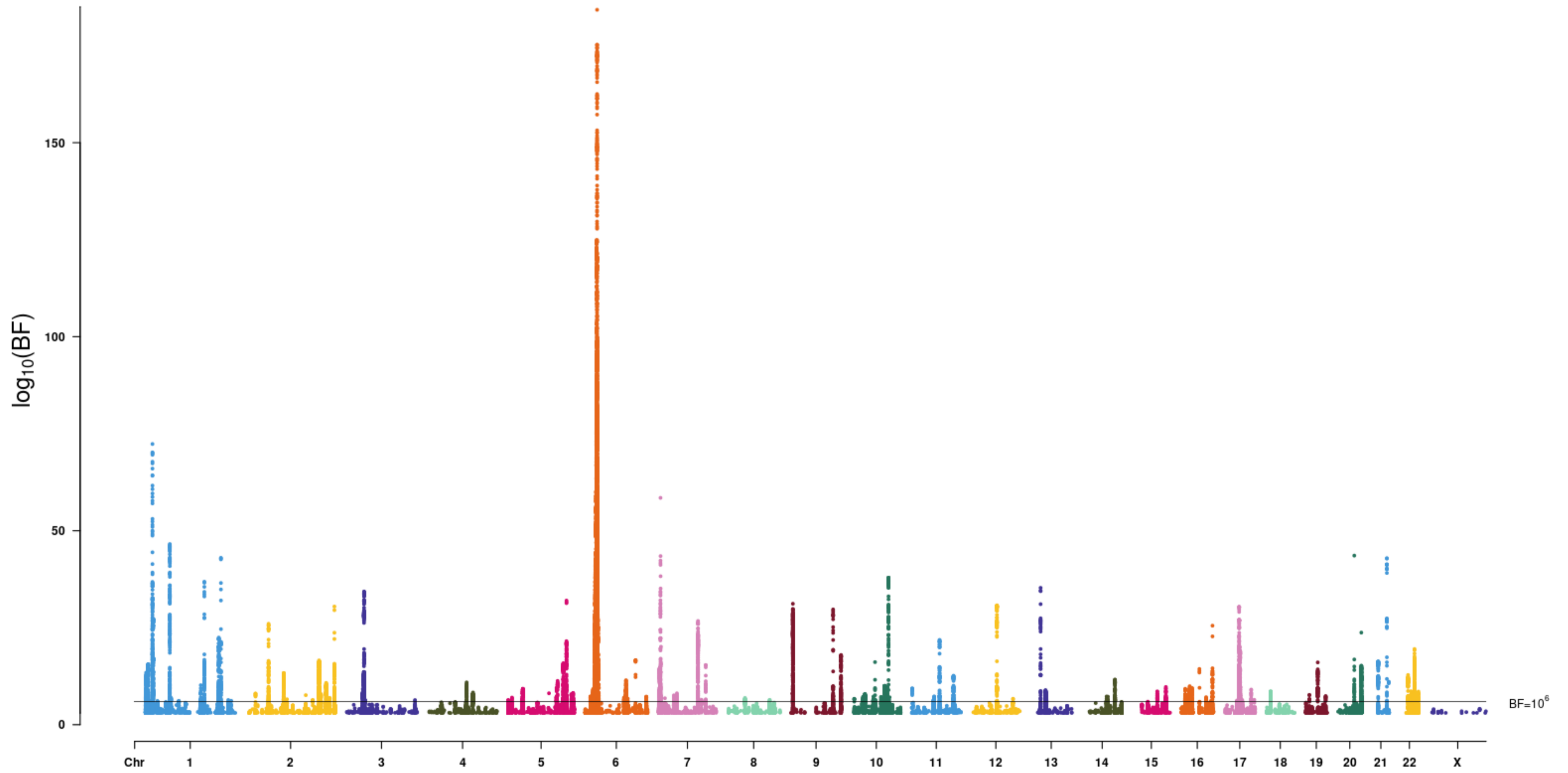
EAS+EUR CD MANTRA



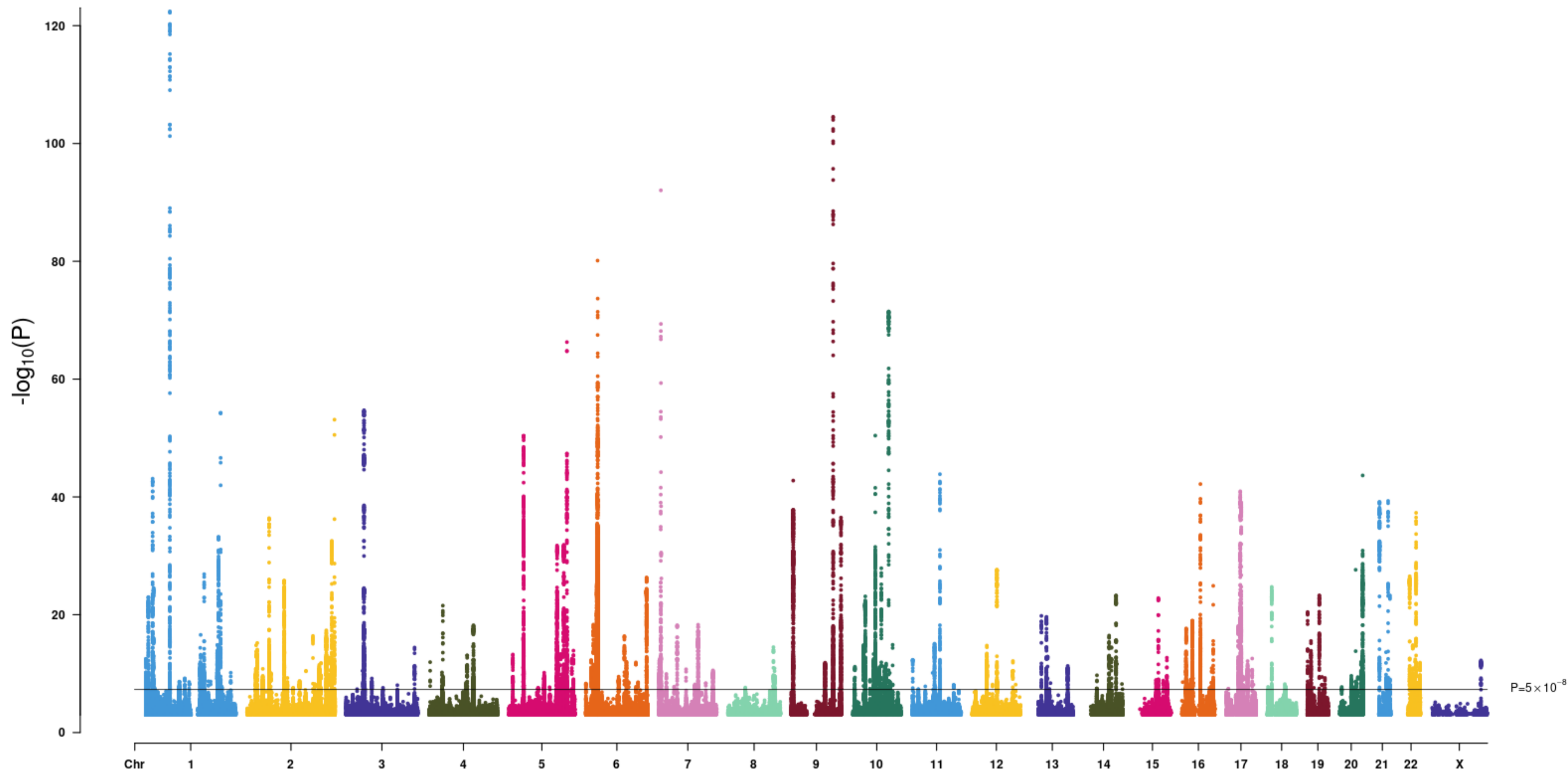
EAS+EUR UC FE



EAS+EUR UC MANTRA



EAS+EUR IBD FE



EAS+EUR IBD MANTRA

