

Supplemental Table S1. Initial laboratory investigations

Test	Result
Pre-hospital lipid profile, mmol/L*	
Total cholesterol	4.34
HDL-cholesterol	1.37
LDL-cholesterol	2.38
Triglycerides	1.30
Non-HDL cholesterol	2.97
Complete Blood Count	
White blood cell count, X10 ⁹ /L	8.3
Platelet count, X10 ⁹ /L	241
Hemoglobin, g/L	140
Hematocrit, L/L	0.41
Creatinine, umol/L	59
Hemoglobin A _{1c} , %	4.8
Thyroid stimulating hormone, mIU/L	1.3

D-dimer, mcg/L	343
β HCG, IU/L	<2
C-reactive protein, mg/L	2.4
Erythrocyte sedimentation rate, mm/h	8
COVID-19 virus PCR test	Not detected
Troponin I**, mcg/L	<0.012 (initial) 0.53 (6 hours) 1.10 (12 hours) 1.65 (18 hours)

*performed 4 weeks before hospitalization

**Troponin I >0.12 mcg/L is consistent with myocardial infarction.

Abbreviations: HDL high density lipoprotein, LDL low-density lipoprotein, HCG human choriogonadotropin

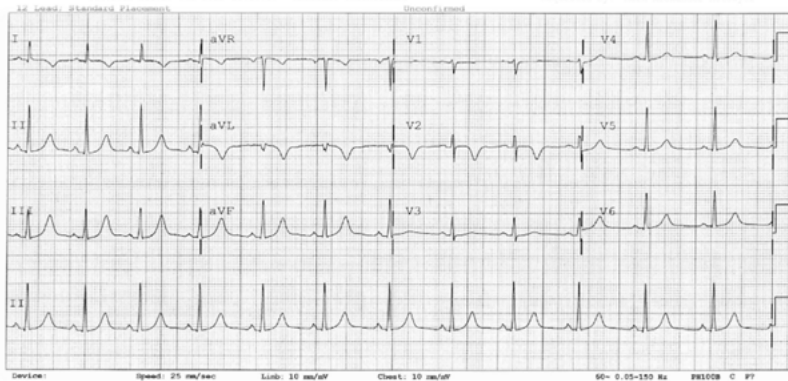
Supplemental Table S2. Diagnostic dilemma

Favoring SCAD	Favoring Atherosclerosis
Female sex	Family history of premature CAD
Young age	Symptoms started several weeks before hospitalization (not sudden onset)
Paucity of cardiovascular risk factors	No extra-cardiac FMD
Smooth coronary arteries	No angiographic improvement 2 weeks after hospitalization
Mild coronary tortuosity	

Abbreviations: SCAD spontaneous coronary artery dissection, CAD coronary artery disease,

FMD fibromuscular dysplasia

Supplemental figure 1: ECG on admission



Supplemental figure 2: Post interventional OCT

