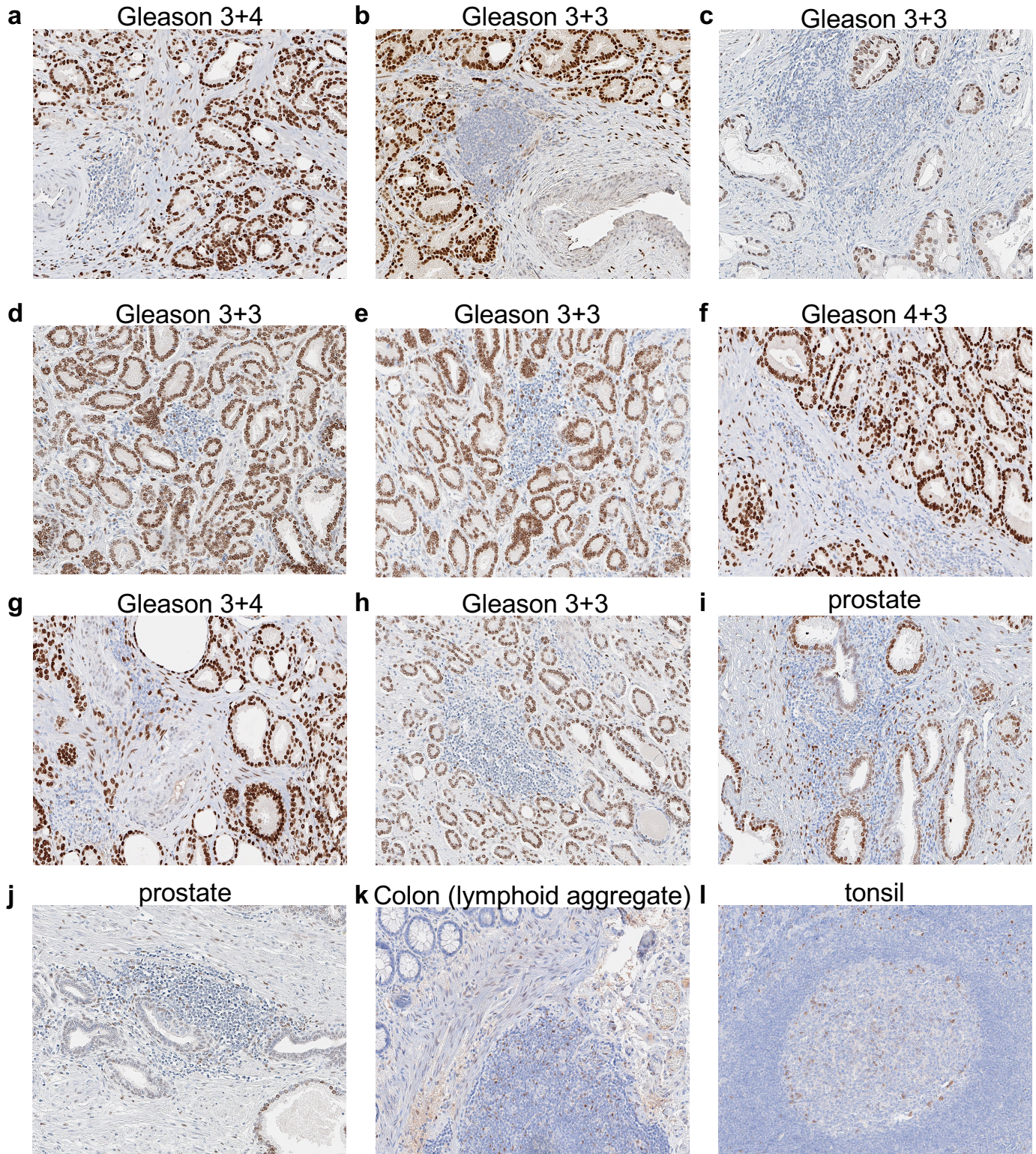

Supplementary information

Androgen receptor activity in T cells limits checkpoint blockade efficacy

In the format provided by the
authors and unedited

Supplementary Information

Immunohistochemical staining of androgen receptor (AR) in immune cells within the prostate cancer and non-cancer microenvironment.



Supplemental Figure 1. a-h, Each panel represents a different prostate cancer from a different patient. Cancer cells have distinct glandular appearance, immune cells are dark blue. i-l, Each panel represents a different non-tumor tissue.

