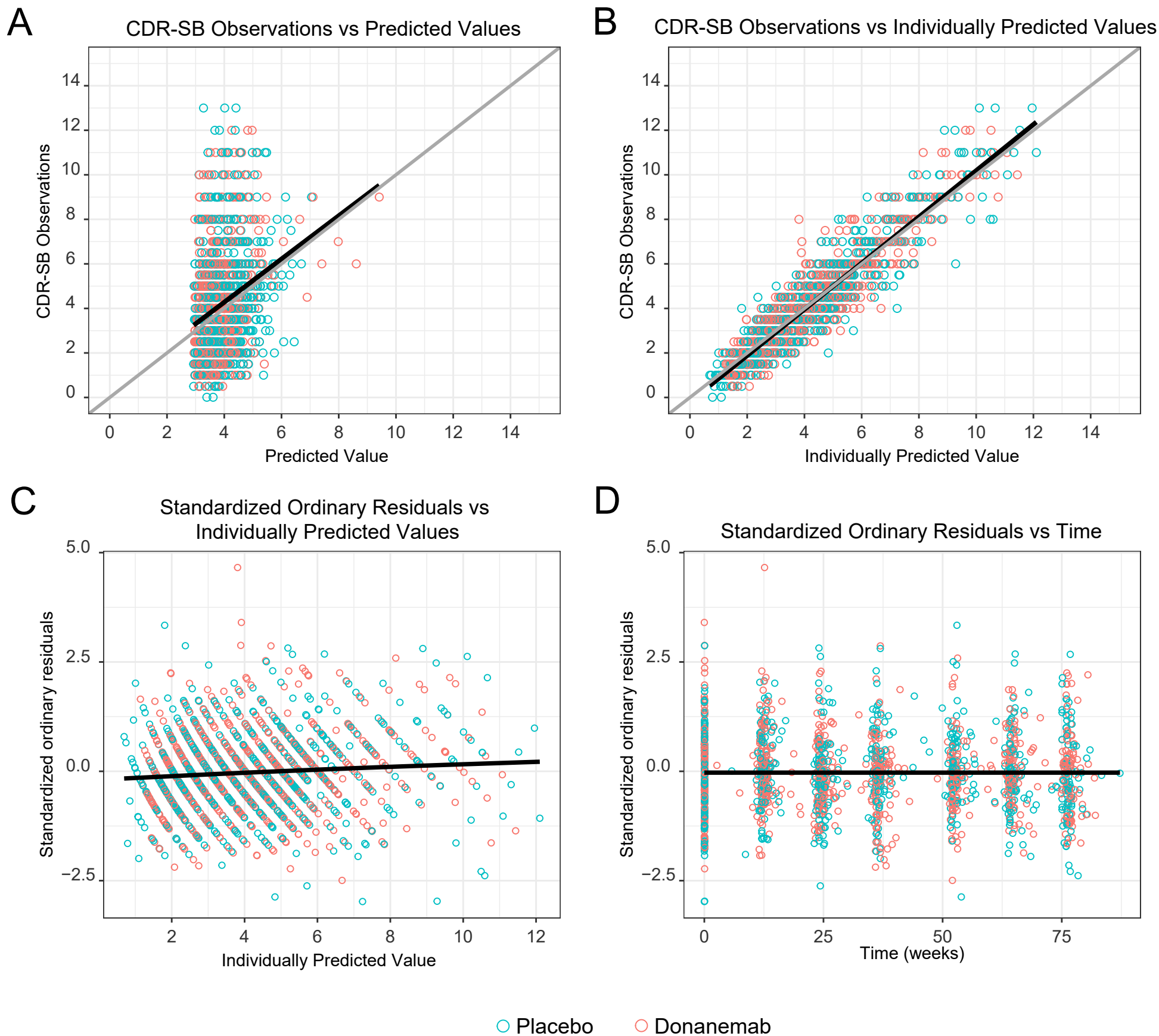


Supplemental Figure 3



Supplemental Figure 3. Goodness of fit for CDR-SB disease progression model.

LOWESS fit, a smoothed value given by a weighted linear least-squares regression over the span of observations, for data are presented (black line) in addition to a line of identity (gray line on top panel).

Abbreviations: CDR-SB = clinical dementia rating-sum of boxes; LOWESS = locally weighted scatterplot smoothing.