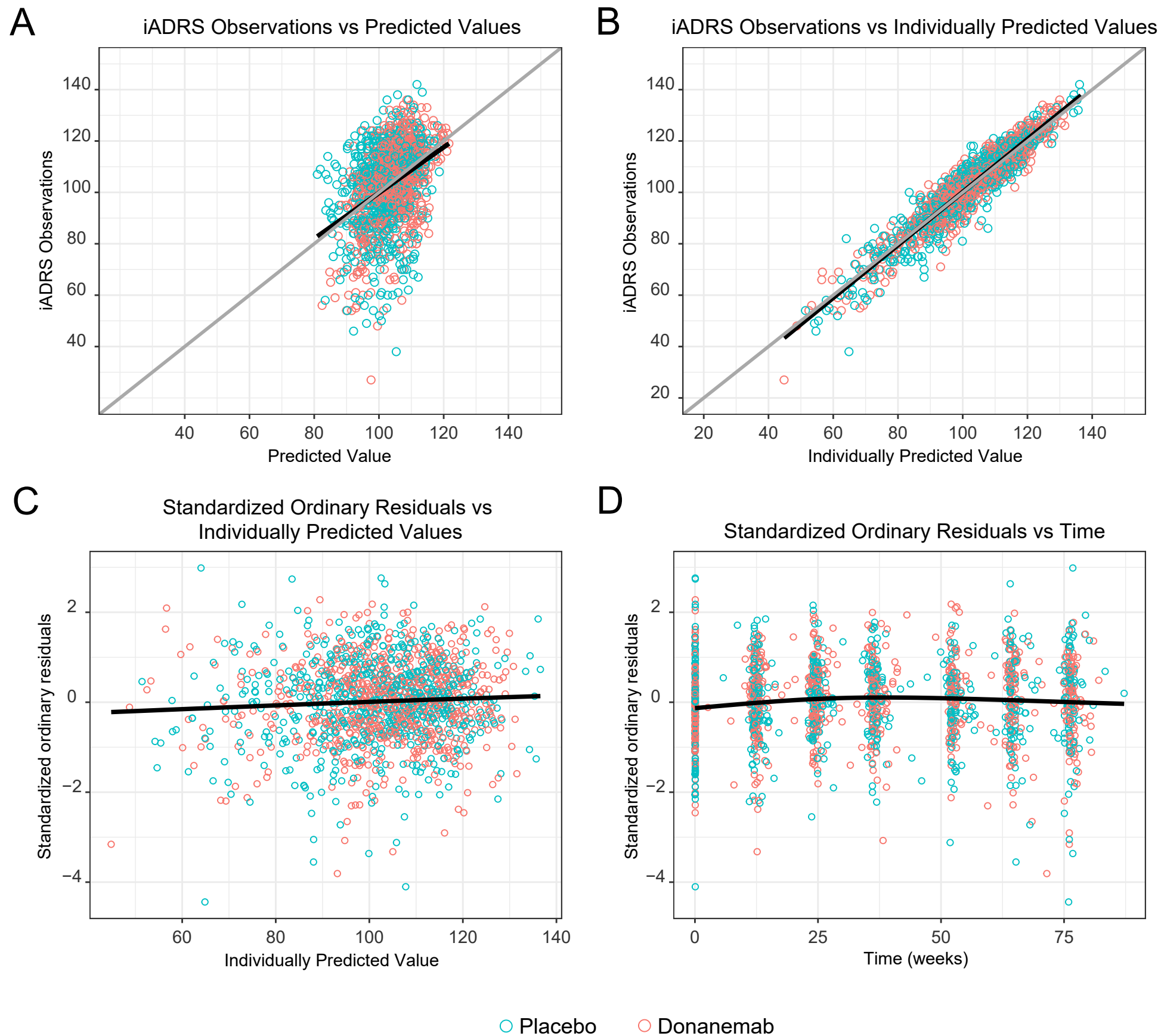


# Supplemental Figure 2



Supplemental Figure 2. Goodness of fit for iADRS disease progression model.

LOWESS fit, a smoothed value given by a weighted linear least-squares regression over the span of observations, for data are presented (black line) in addition to a line of identity (gray line on top panel).

Abbreviations: iADRS = integrated Alzheimer's disease rating scale; LOWESS = locally weighted scatterplot smoothing.