

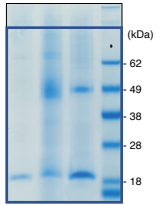
Supplementary information

Inhibiting membrane rupture with NINJ1 antibodies limits tissue injury

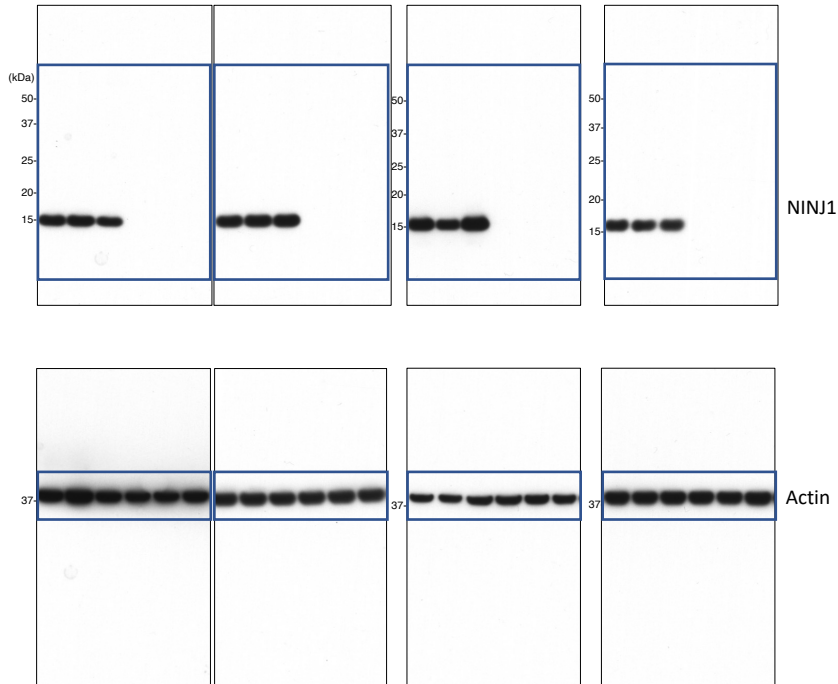
In the format provided by the authors and unedited

Supplementary Figure 1. Raw images of uncropped gels

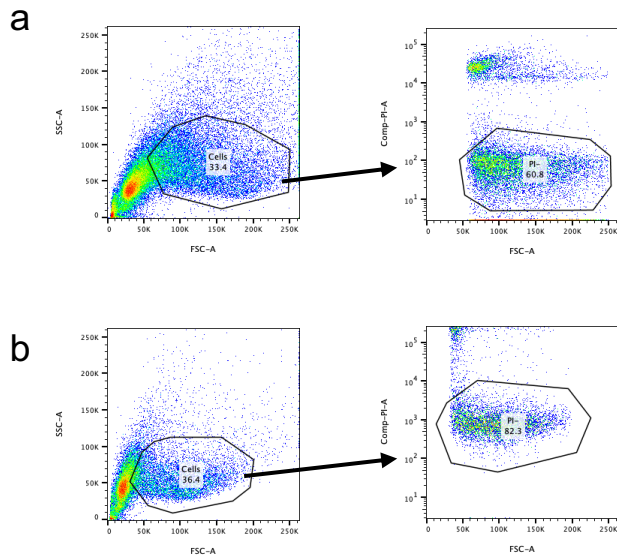
Source Data, Extended Data Fig. 3b



Source Data, Extended Data Fig. 5a

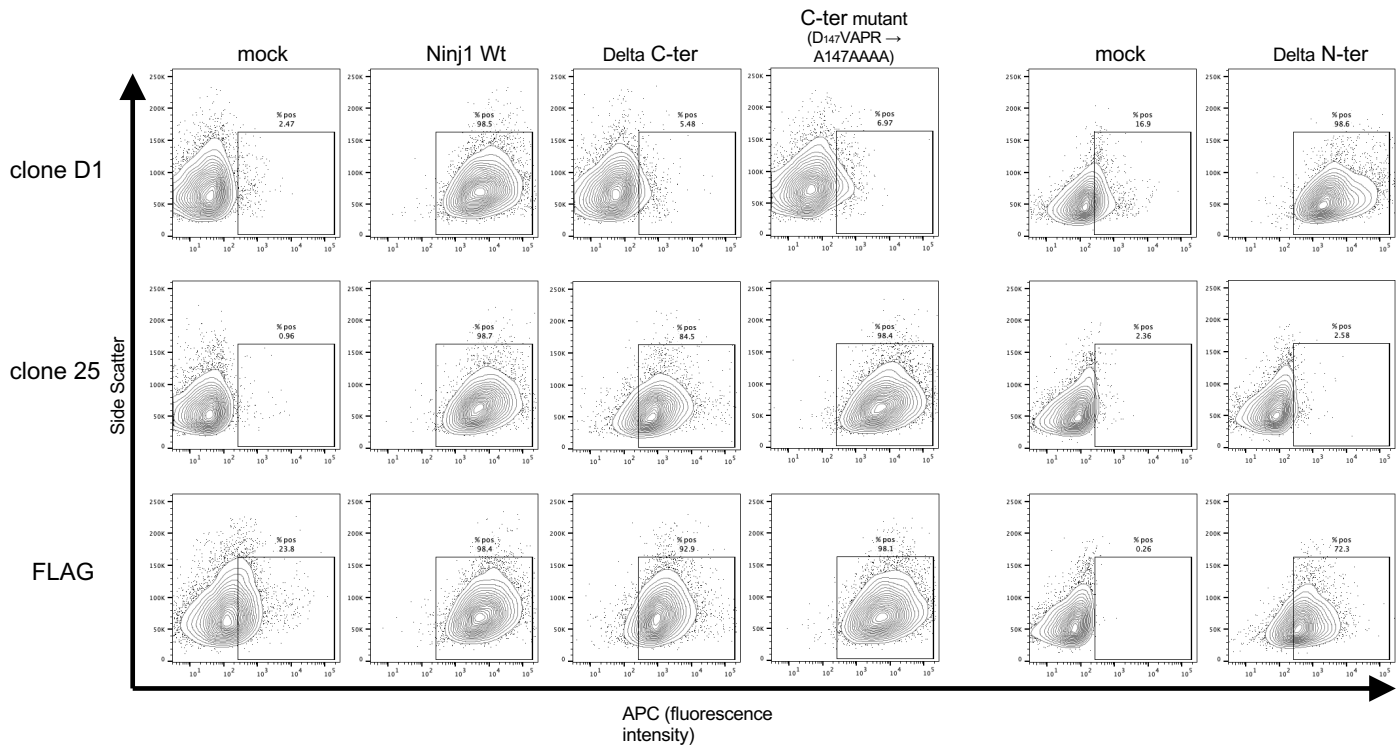


Supplementary Figure 2. Flow cytometry gating strategy



- a**, Flow cytometry gating strategy to sort PI-cells used for Fig. 1d and Extended Data Fig. 1c.
b, Flow cytometry gating strategy to sort PI-cells used for Extended Data Fig. 2d.

Supplementary Figure 3. Flow cytometry contour plots for Fig. 1d



Supplementary Figure 4. Flow cytometry contour plots for Extended Data Figs. 1c and 2d

