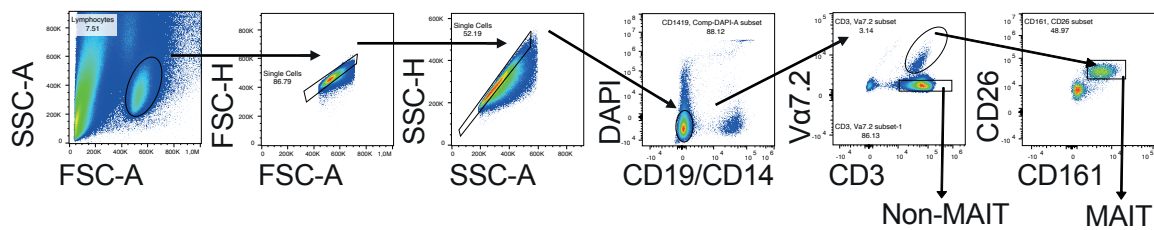
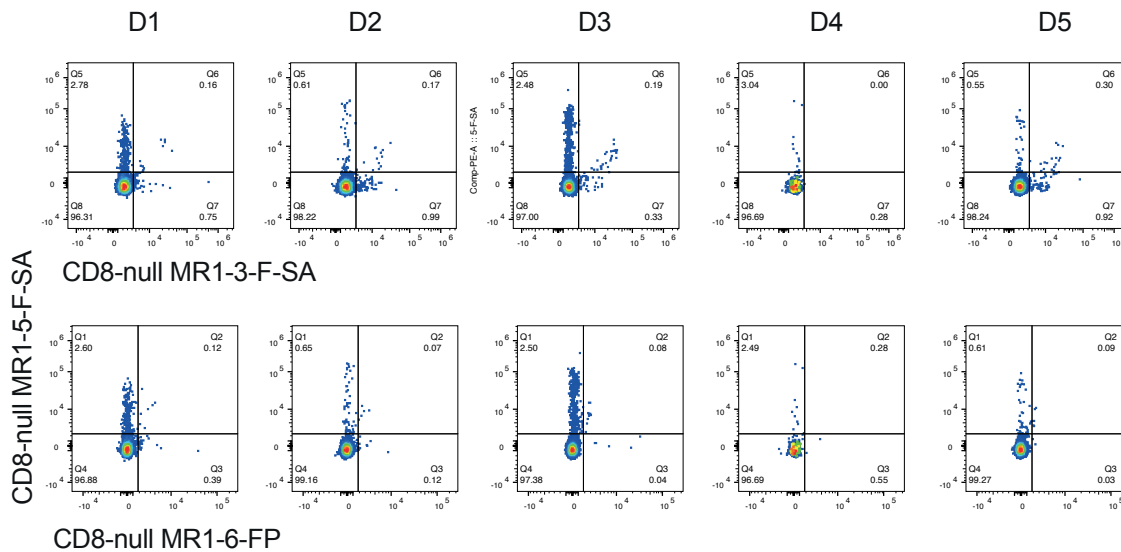


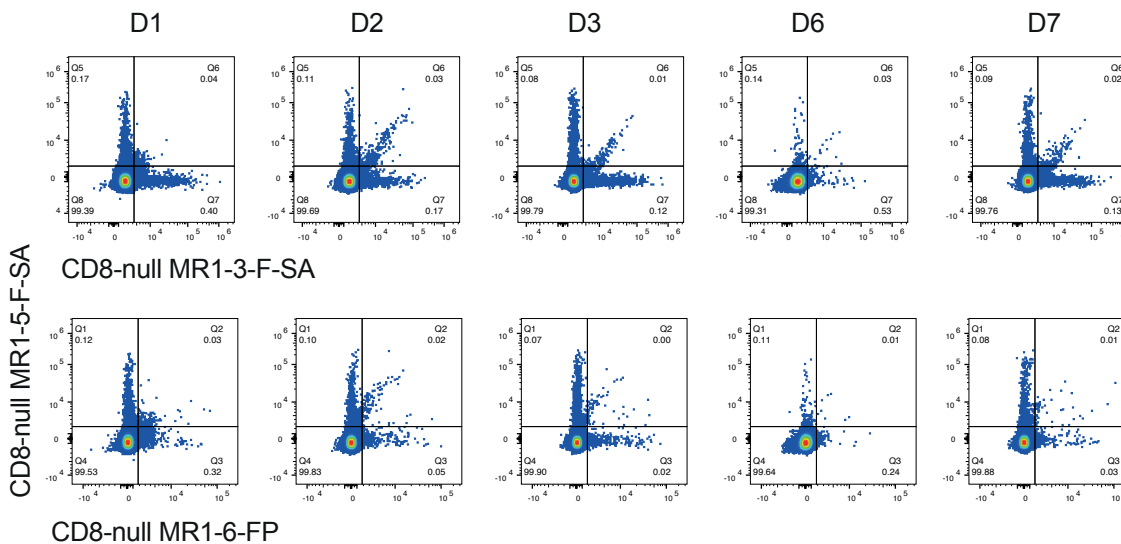
A



B



C



A) Gating strategy for the identification of tetramer positive MAIT cells and tetramer positive non-MAIT cells within PBMCs from 7 healthy donors. B) Plots of each donor showing staining of MAIT cells with all three tetramers each loaded with different ligands. Plots display either 5-F-SA vs 3-F-SA or 5-F-SA vs 6-FP tetramers. Tetramers used in this experiment generated from CD8-null MR1 monomers loaded with the indicated ligands. C) The same tetramer binding is shown in B, performed on non-MAIT cells.