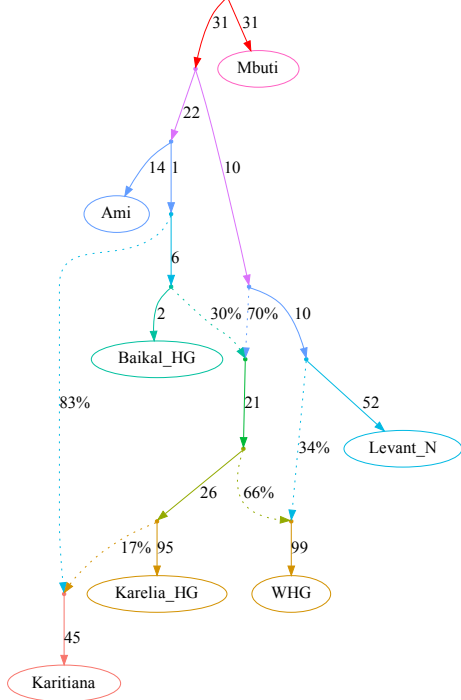


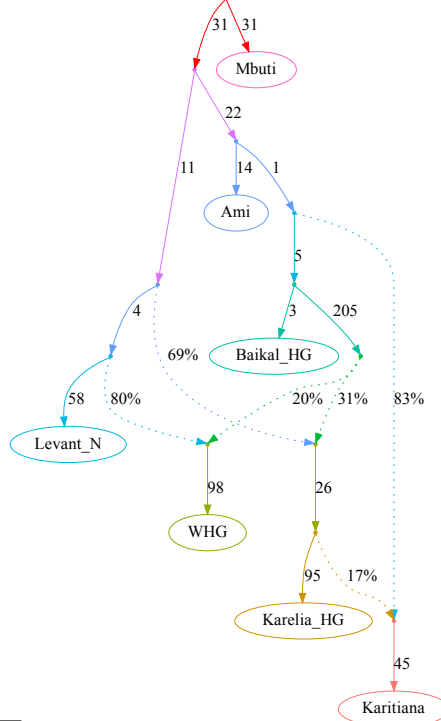
**Figure 3–source data 2.** Alternative admixture graphs for humans found with *findGraphs* for the dataset from Bergström *et al.* (2020). Model parameters (graph edges) that were inferred to be unidentifiable are plotted in red.

**a, best-fitting models for humans sorted by the fit score**

**LL=1.0, WR=0.61, admix=3**

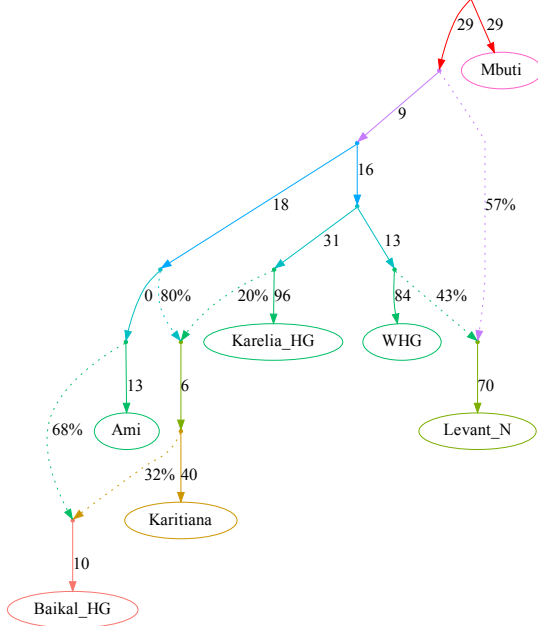


**LL=1.8, WR=0.88, admix=3**

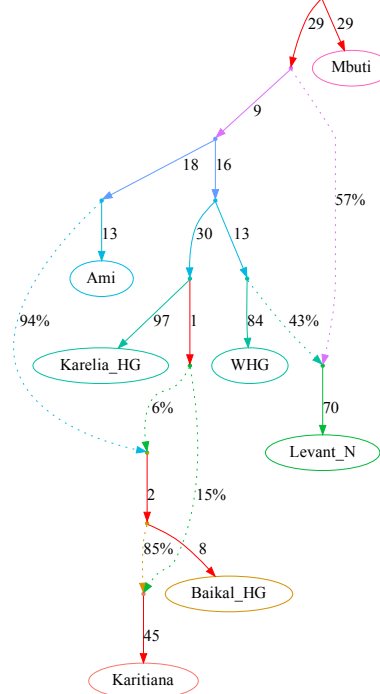


models below are very similar to the best-fitting model for dogs

**LL=6.1, WR=2.05, admix=3**

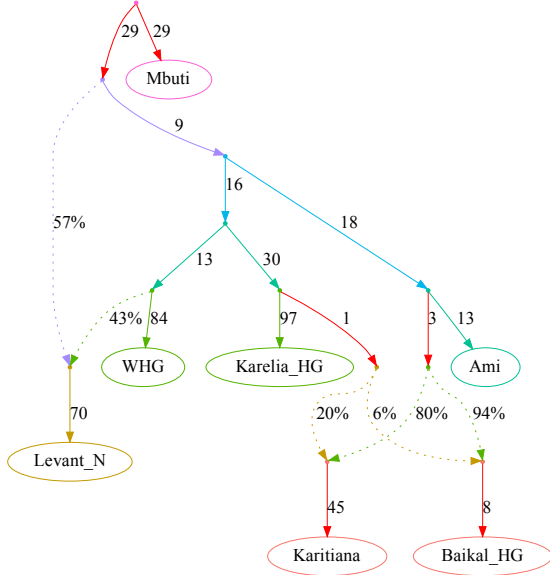


**LL=6.1, WR=2.05, admix=3**

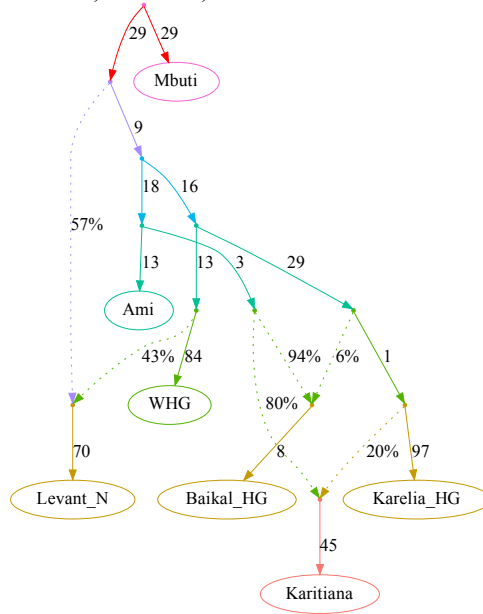


**b, best-fitting models for humans sorted by the fit score**

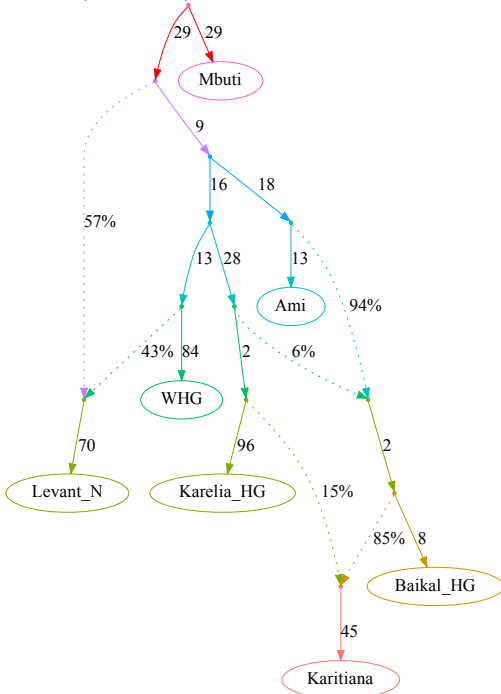
**LL=6.1, WR=2.05, admix=3**



**LL=6.1, WR=2.05, admix=3**



**LL=6.2, WR=2.05, admix=3**



**LL=6.2, WR=2.05, admix=3**

