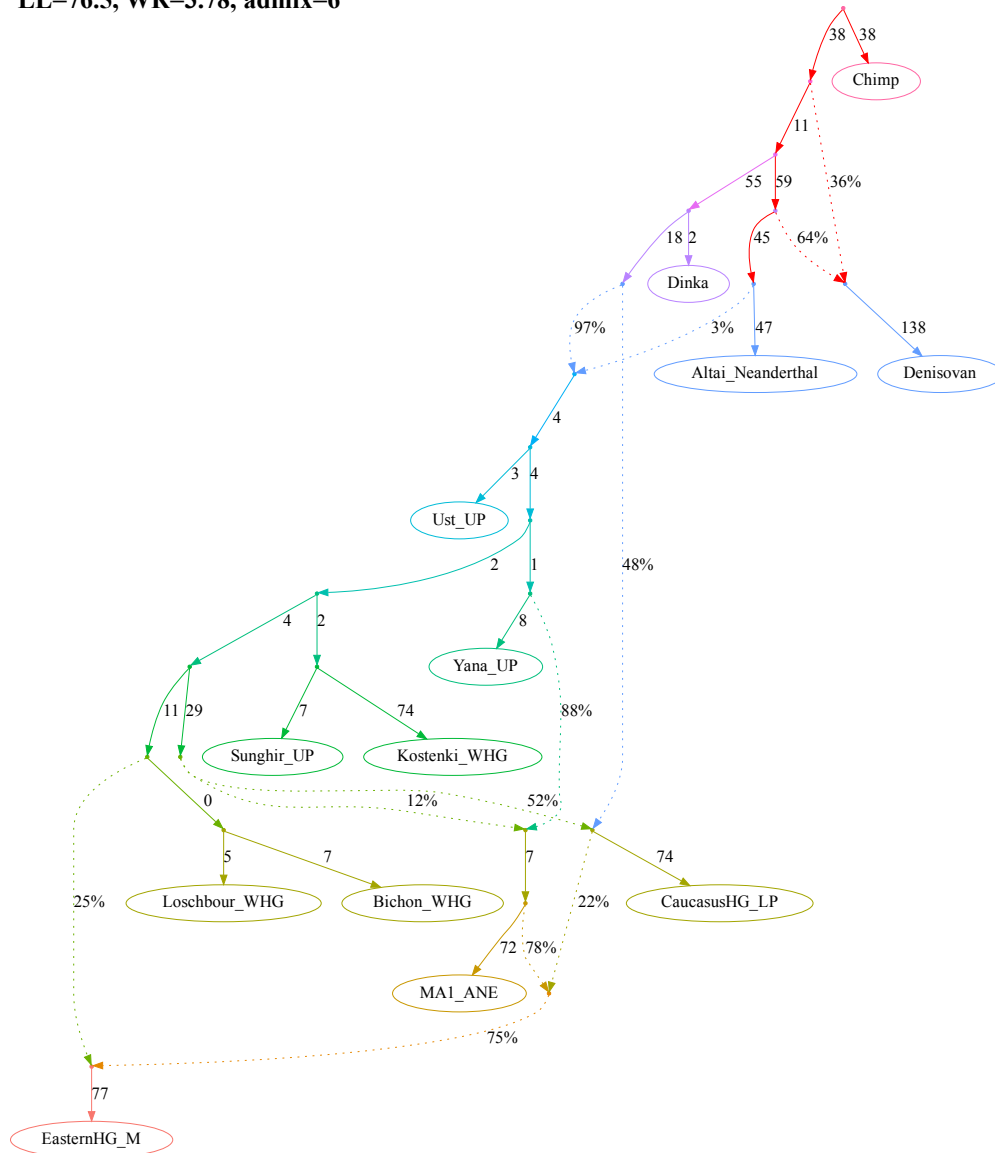


**Figure 4–source data 3.** Simplified published admixture graph for West Eurasian groups from Sikora *et al.* (2019) and alternative graphs found with *findGraphs* (13 populations, 6 admixture events). Model parameters (graph edges) that were inferred to be unidentifiable are plotted in red.

**a**, published model, with chimpanzee added as an outgroup and 4 low-level gene flows from the Neanderthal lineage dropped

LL=76.5, WR=3.78, admix=6

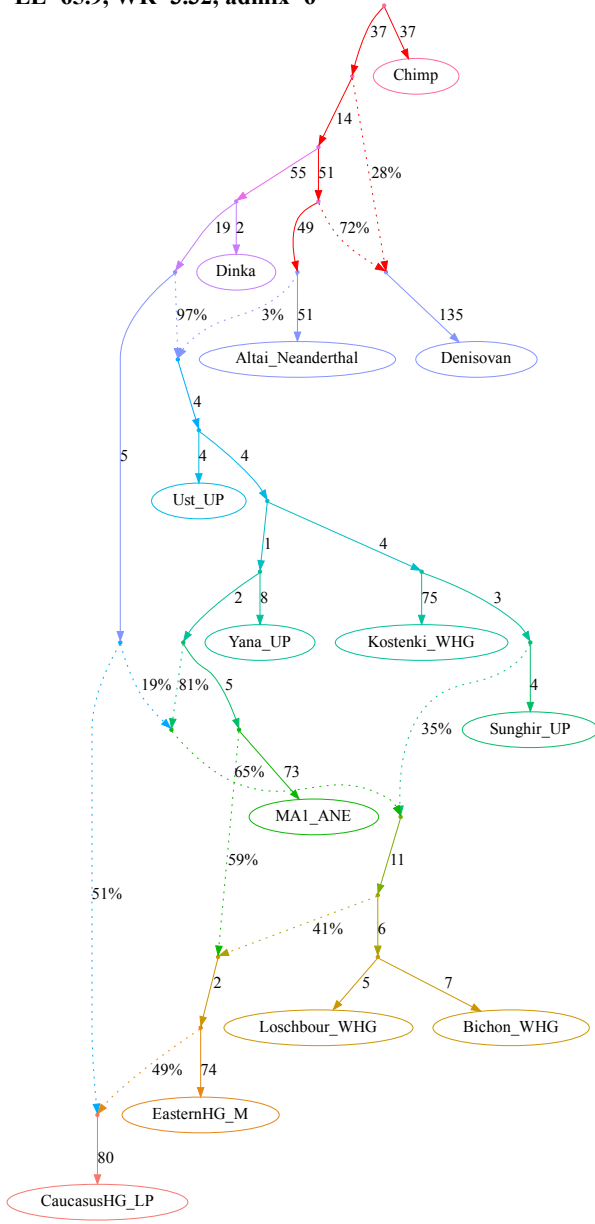


A claim by Sikora *et al.* 2019 relying on the admixture graph above:

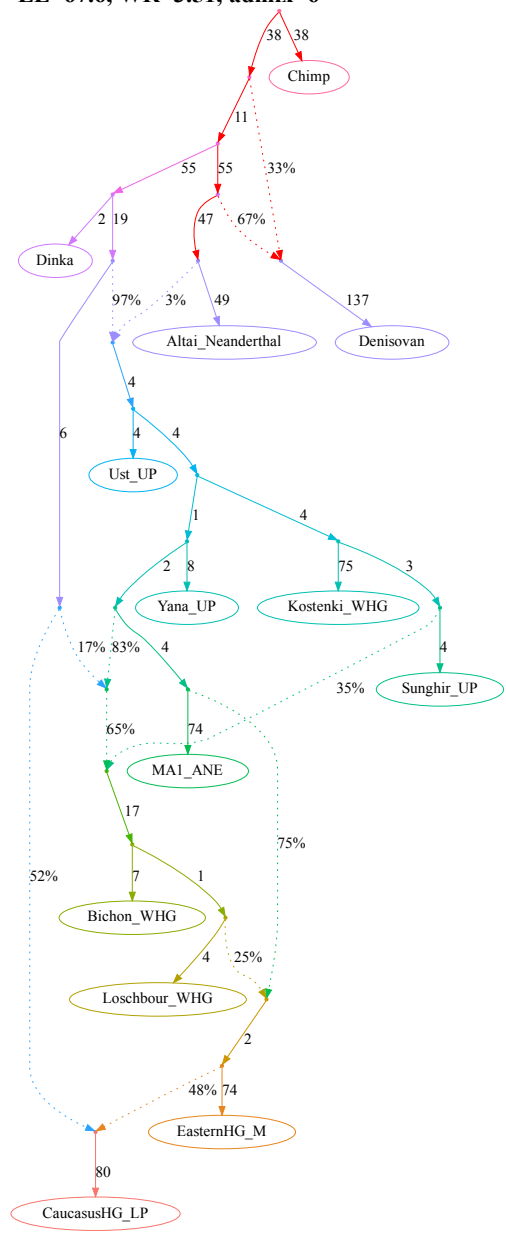
The Mal'ta (MA1\_ANE) lineage receives a gene flow from the Caucasus hunter-gatherer (CaucasusHG\_LP) lineage.

**b, models fitting nominally better than the published one and not supporting the claim**

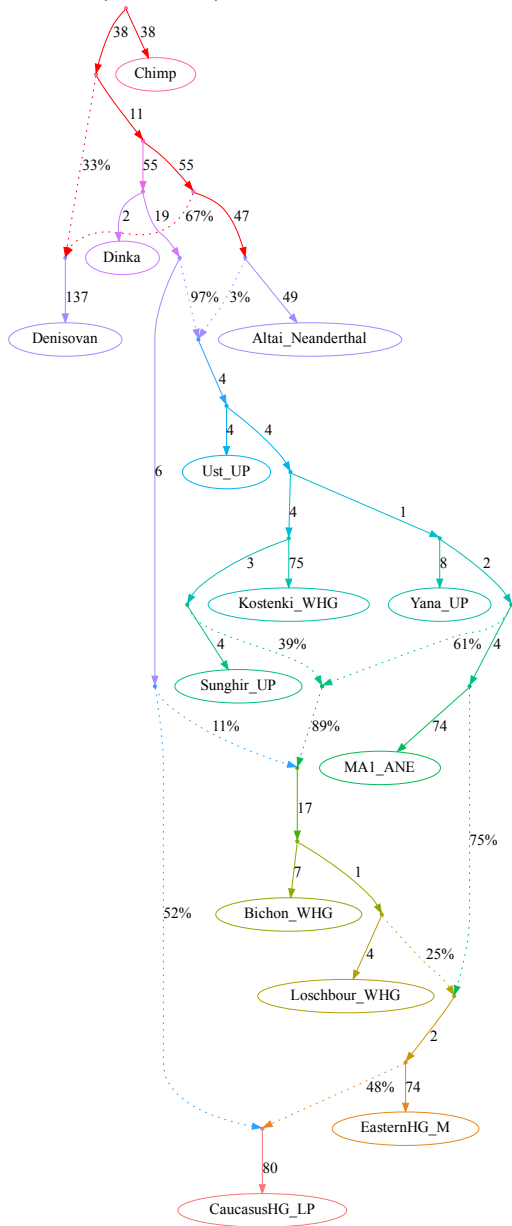
**LL=65.9, WR=3.32, admix=6**



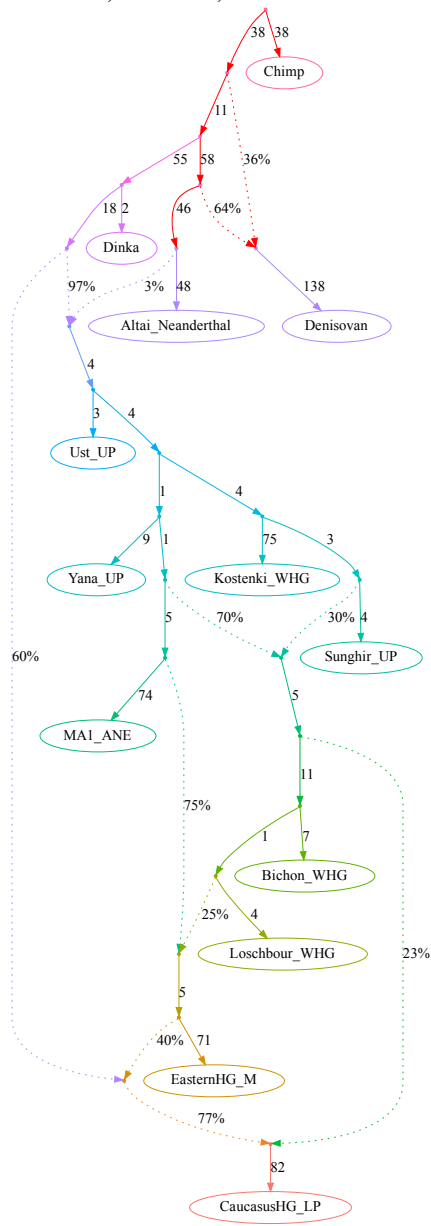
**LL=67.6, WR=3.51, admix=6**



LL=67.6, WR=3.51, admix=6

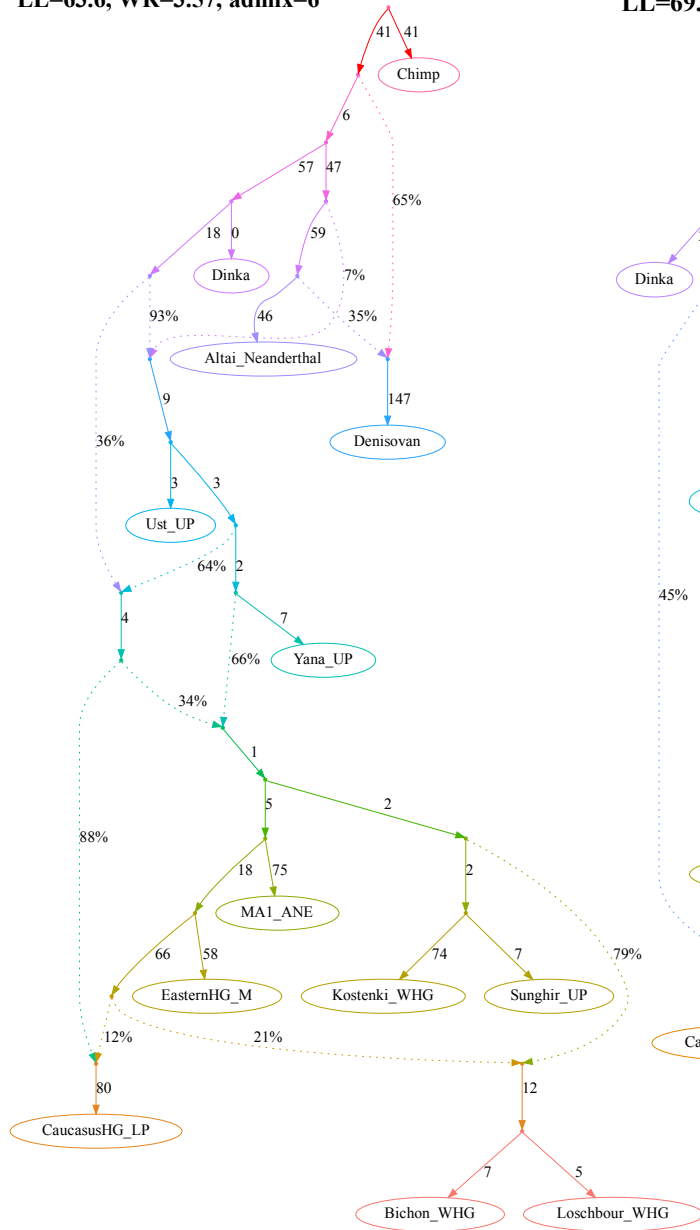


LL=68.3, WR=3.78, admix=6

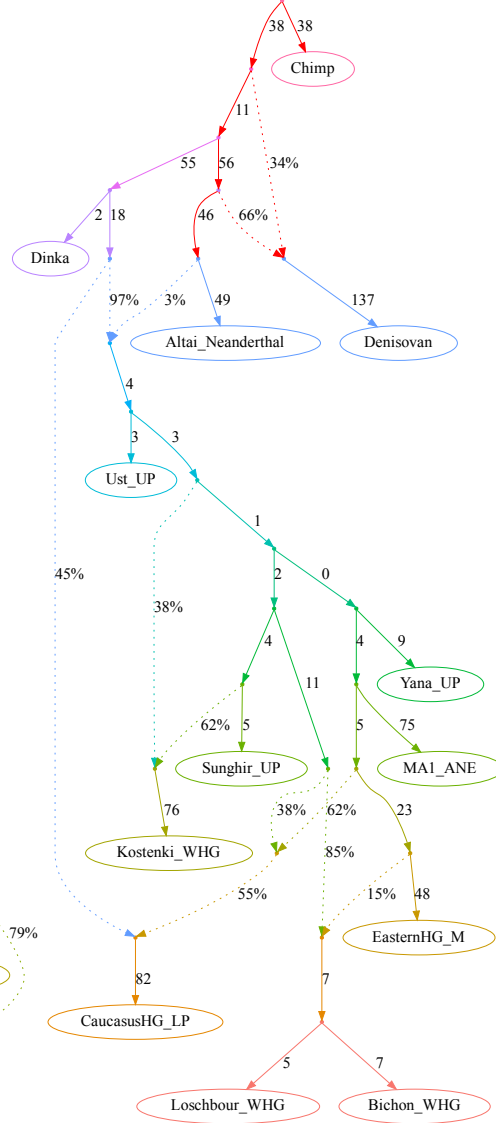


c, models fitting nominally better than the published one and not supporting the claim

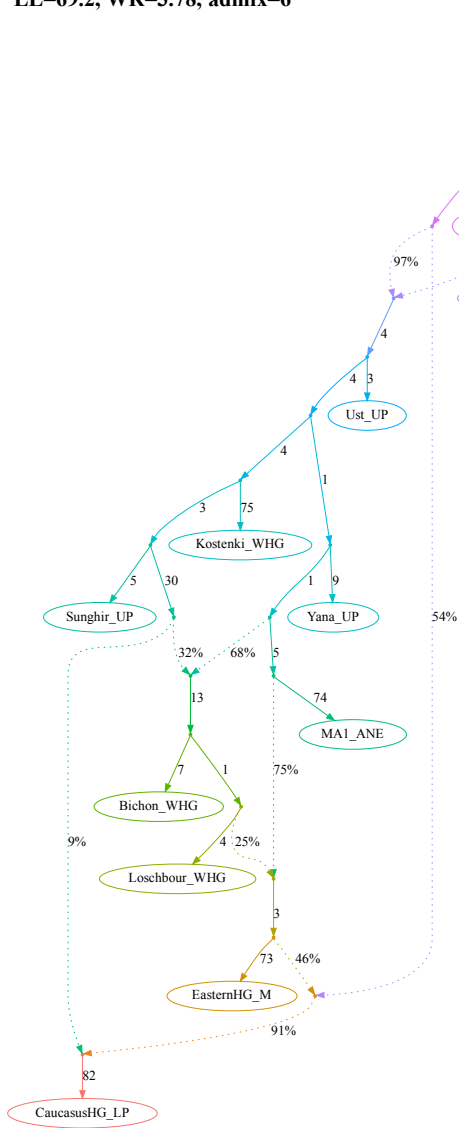
LL=63.6, WR=3.57, admix=6



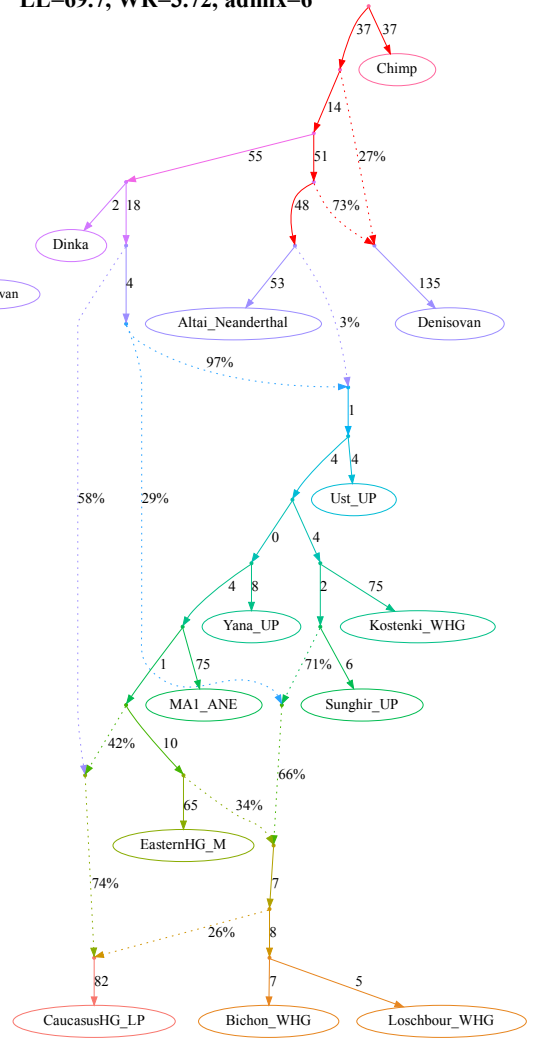
LL=69.1, WR=3.78, admix=6



LL=69.2, WR=3.78, admix=6

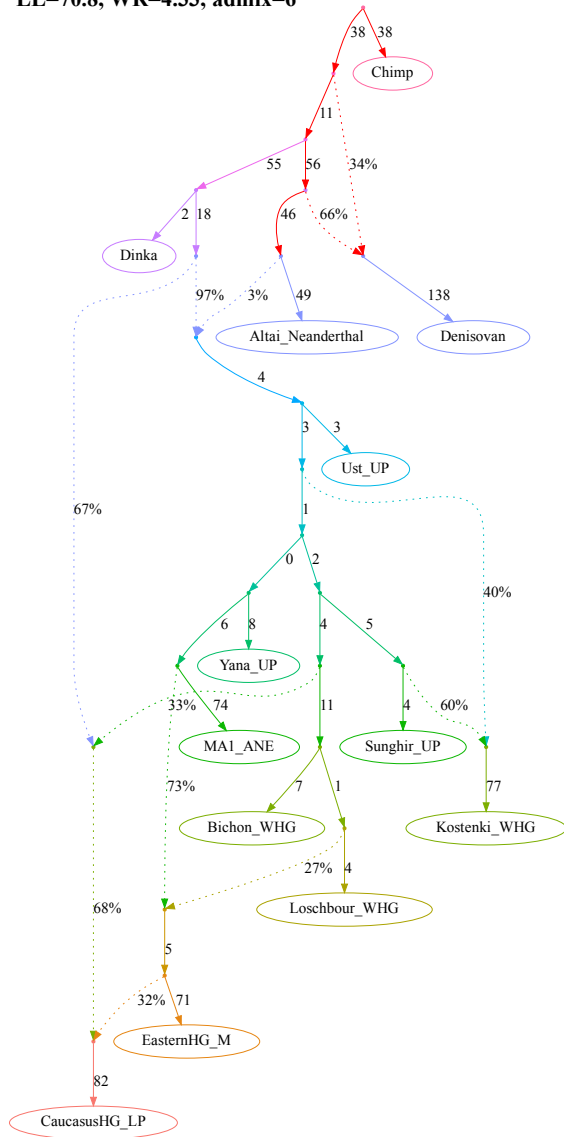


LL=69.7, WR=3.72, admix=6

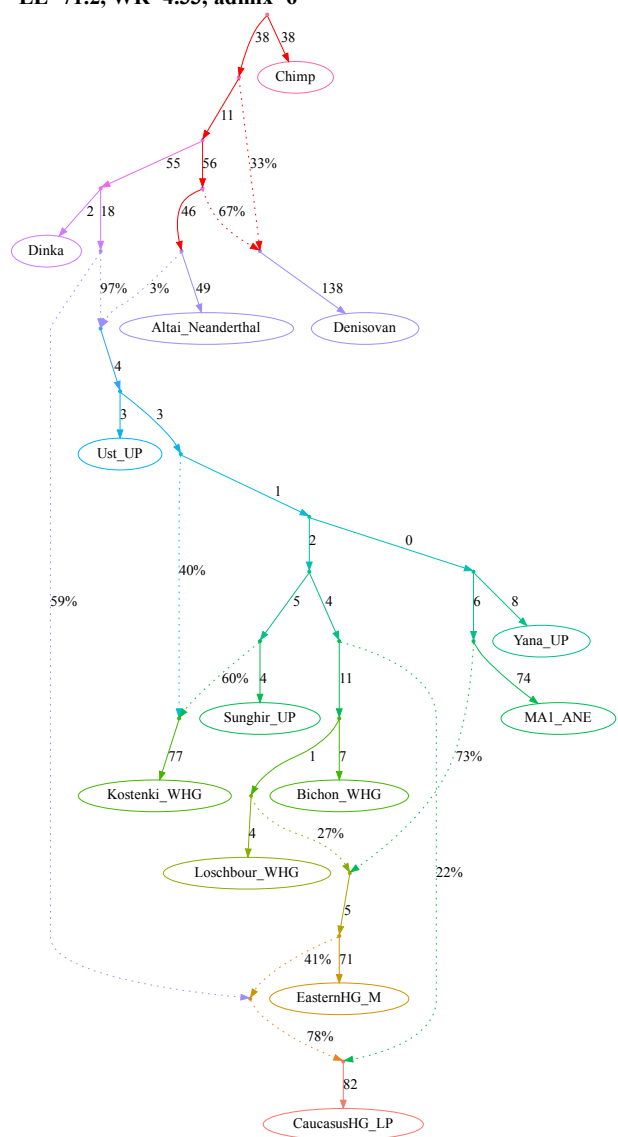


**d, models fitting nominally better than the published one and not supporting the claim**

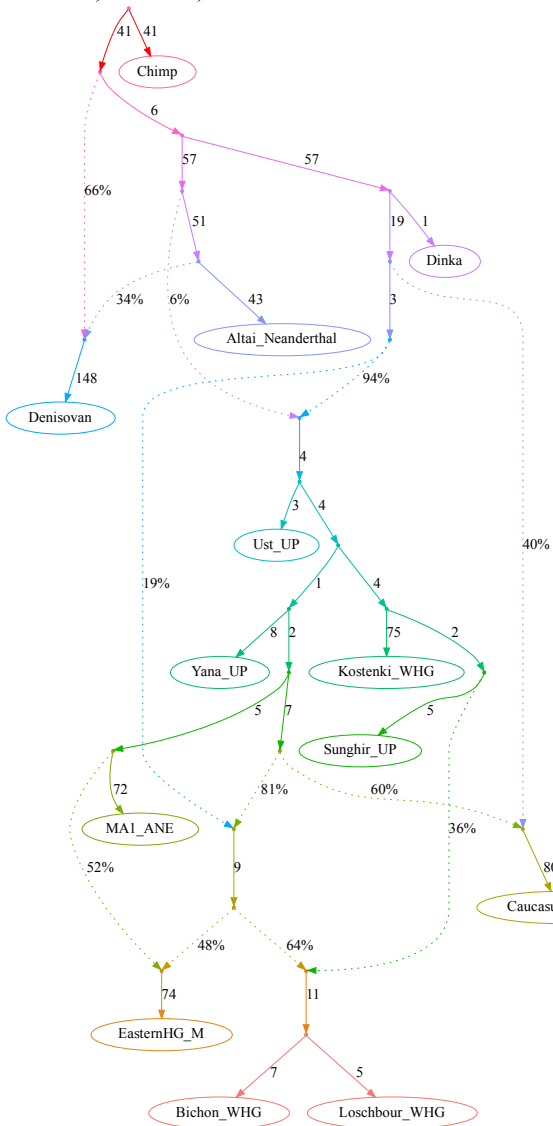
**LL=70.8, WR=4.33, admix=6**



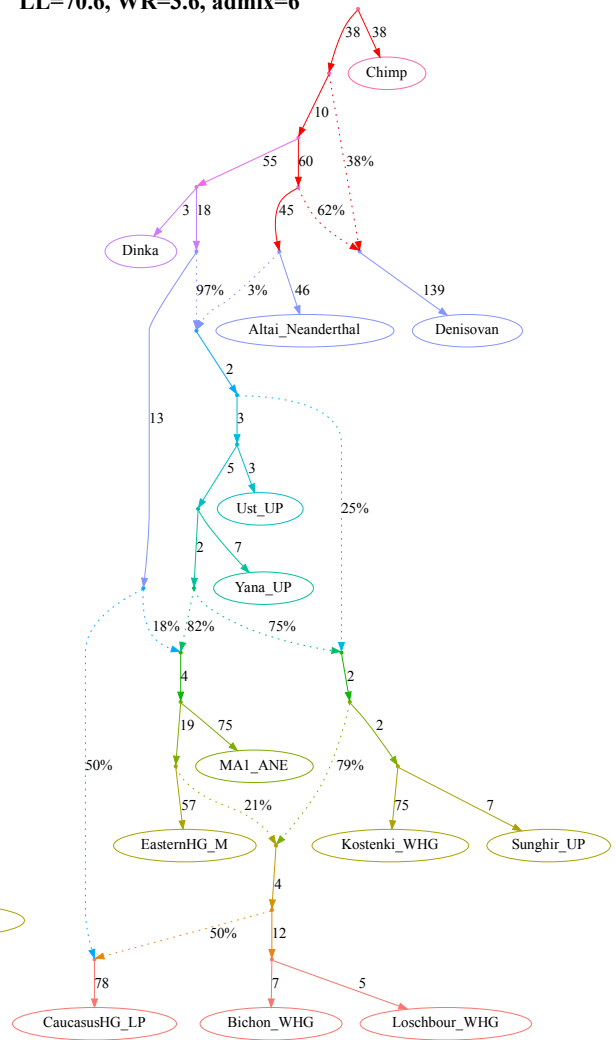
**LL=71.2, WR=4.33, admix=6**



LL=66.2, WR=3.92, admix=6

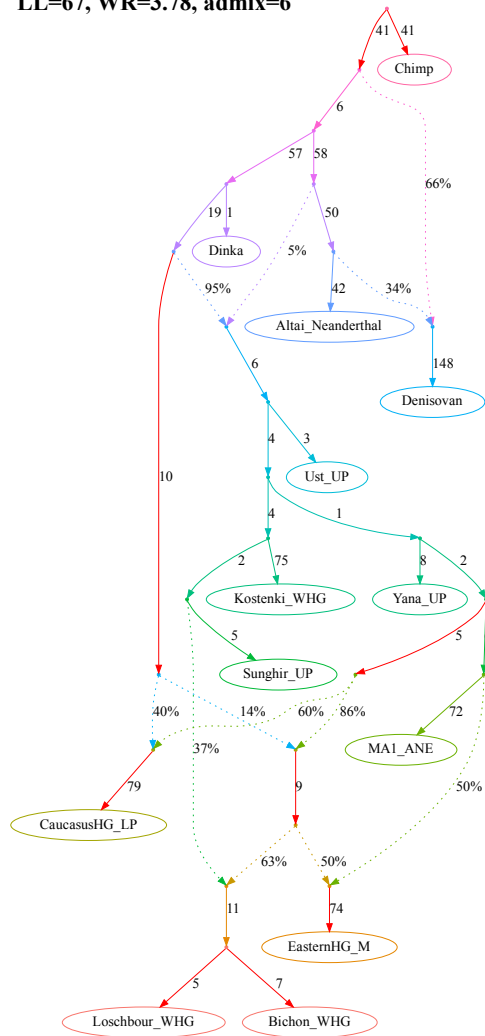


LL=70.6, WR=3.6, admix=6

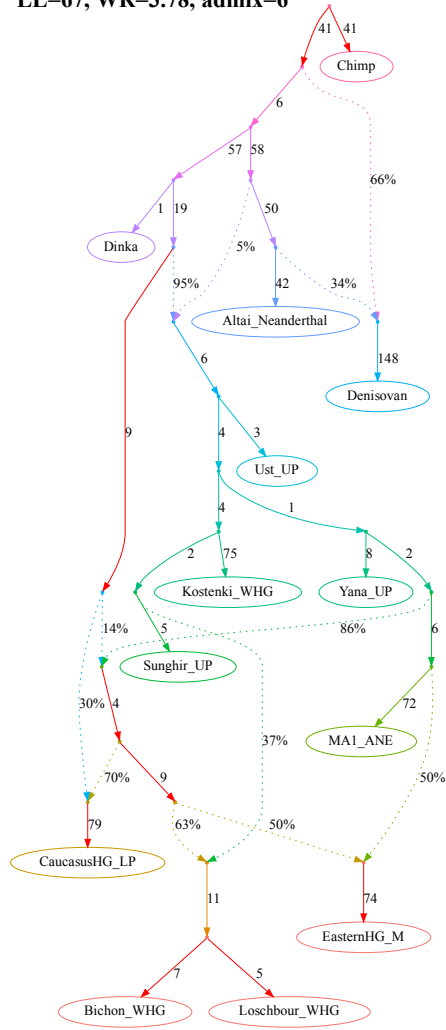


e, models fitting nominally better than the published one and not supporting the claim

LL=67, WR=3.78, admix=6

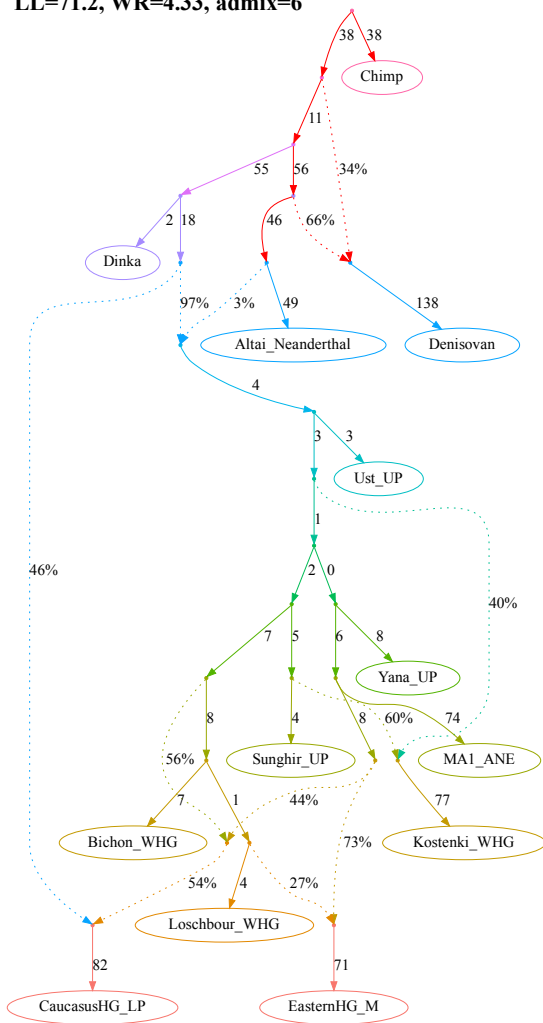


LL=67, WR=3.78, admix=6

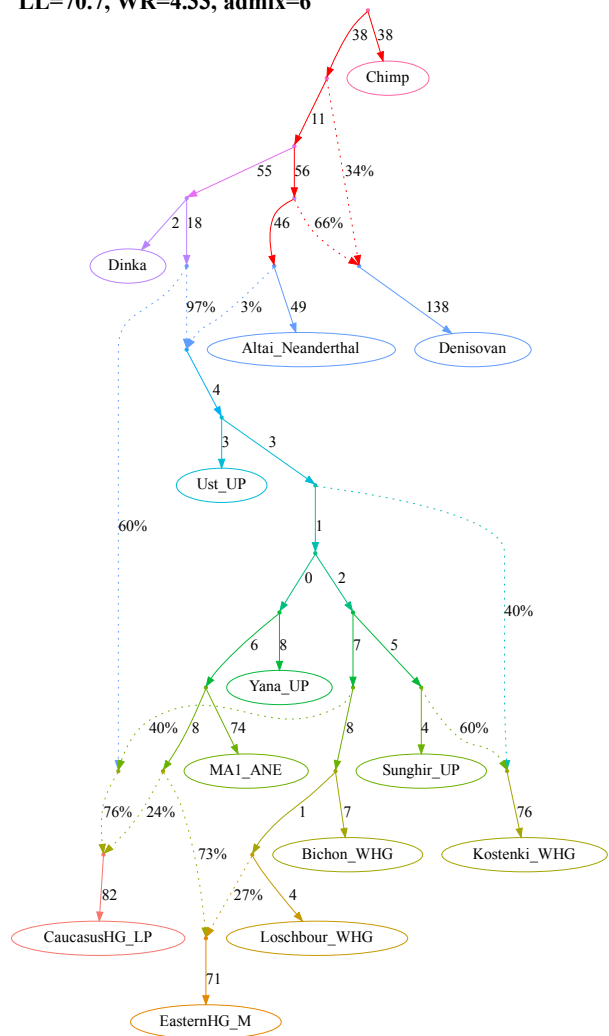




LL=71.2, WR=4.33, admix=6

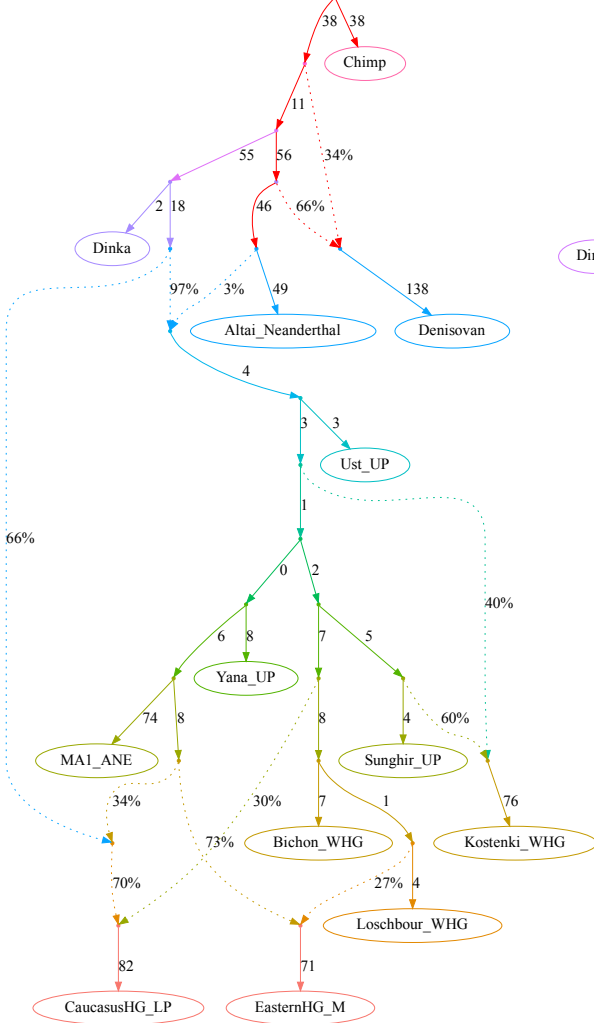


LL=70.7, WR=4.33, admix=6

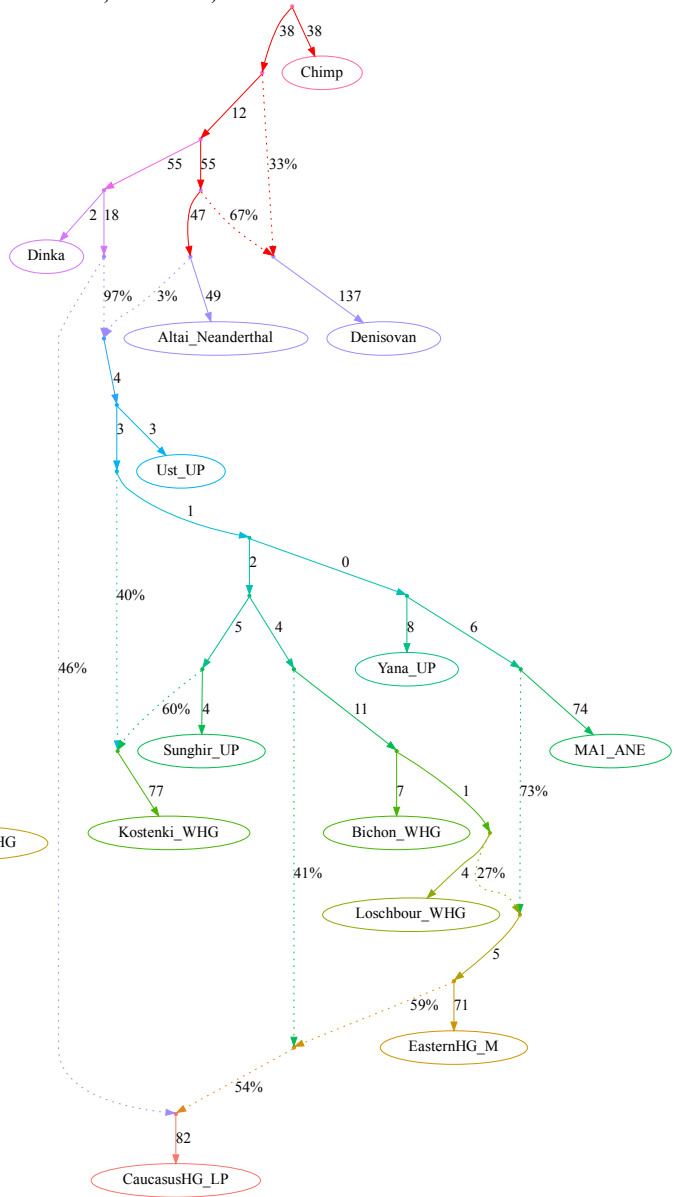


f, models fitting nominally better than the published one and not supporting the claim

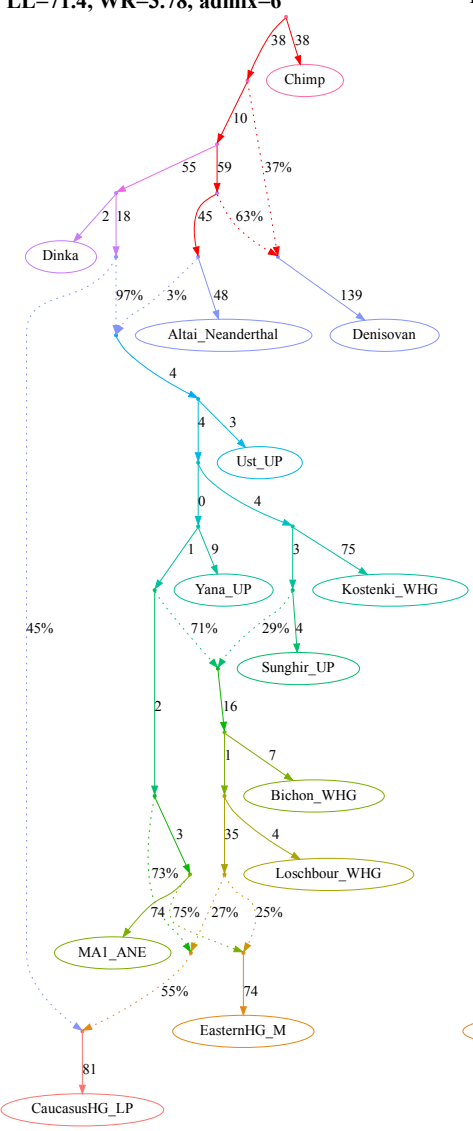
LL=70.7, WR=4.33, admix=6



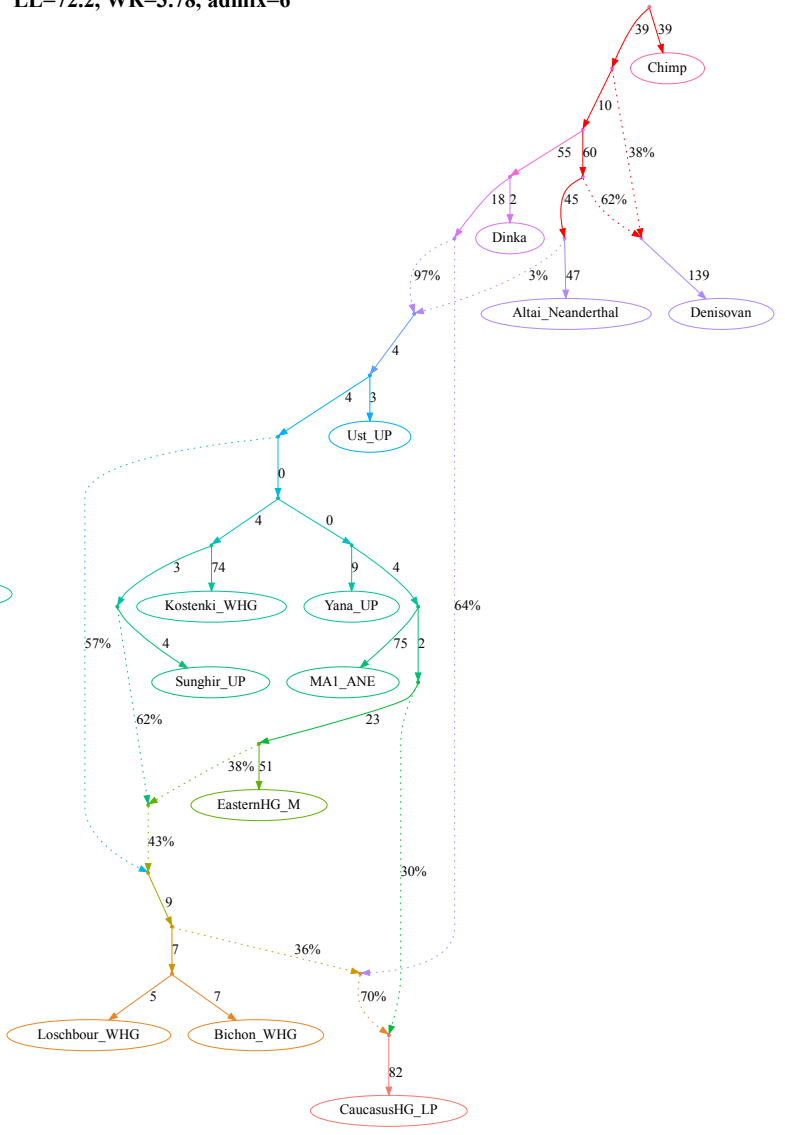
LL=71.1, WR=4.33, admix=6



LL=71.4, WR=3.78, admix=6

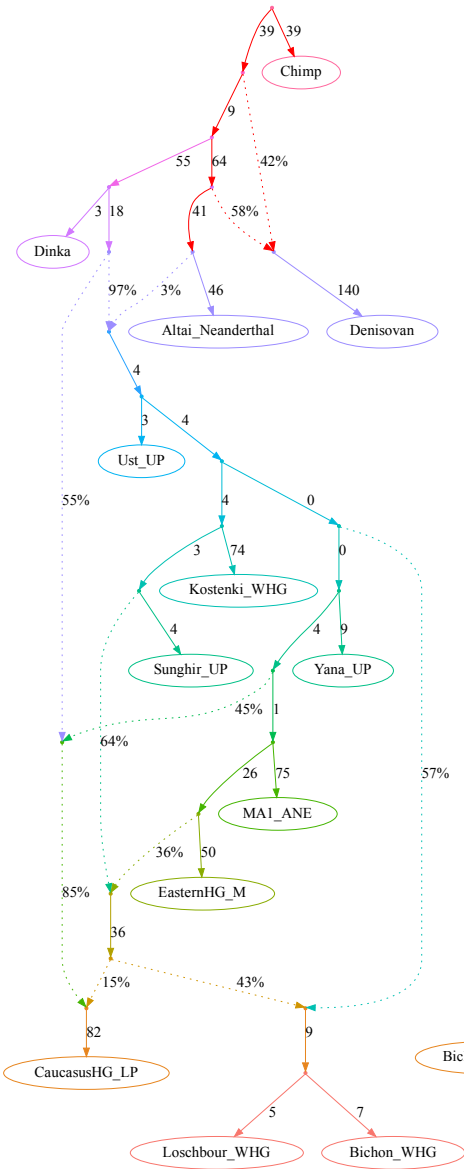


LL=72.2, WR=3.78, admix=6

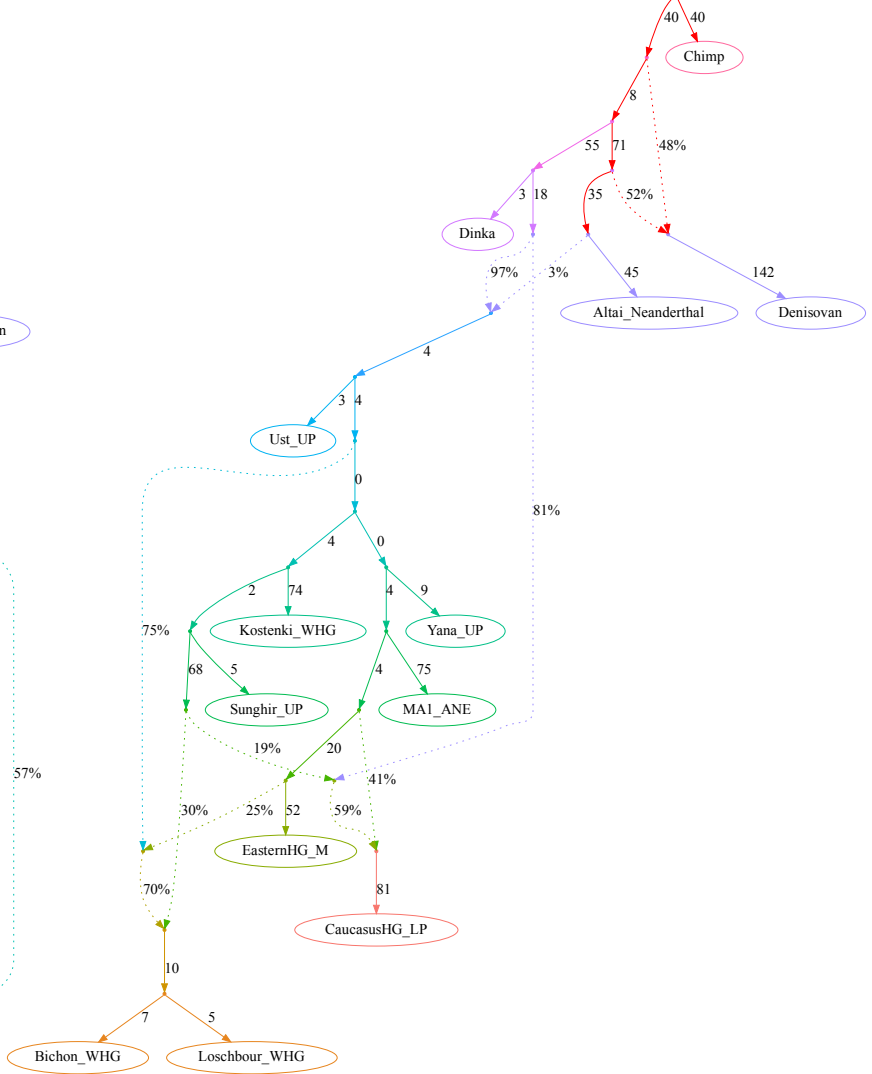


**g**, models fitting nominally better than the published one and not supporting the claim

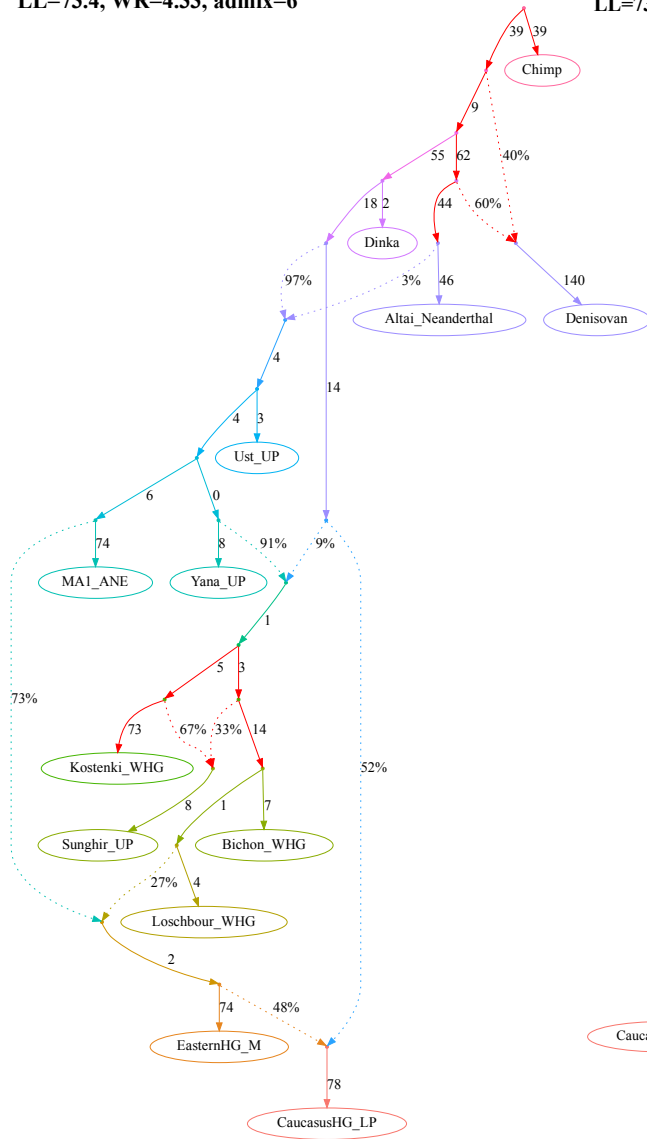
**LL=72.7, WR=3.78, admix=6**



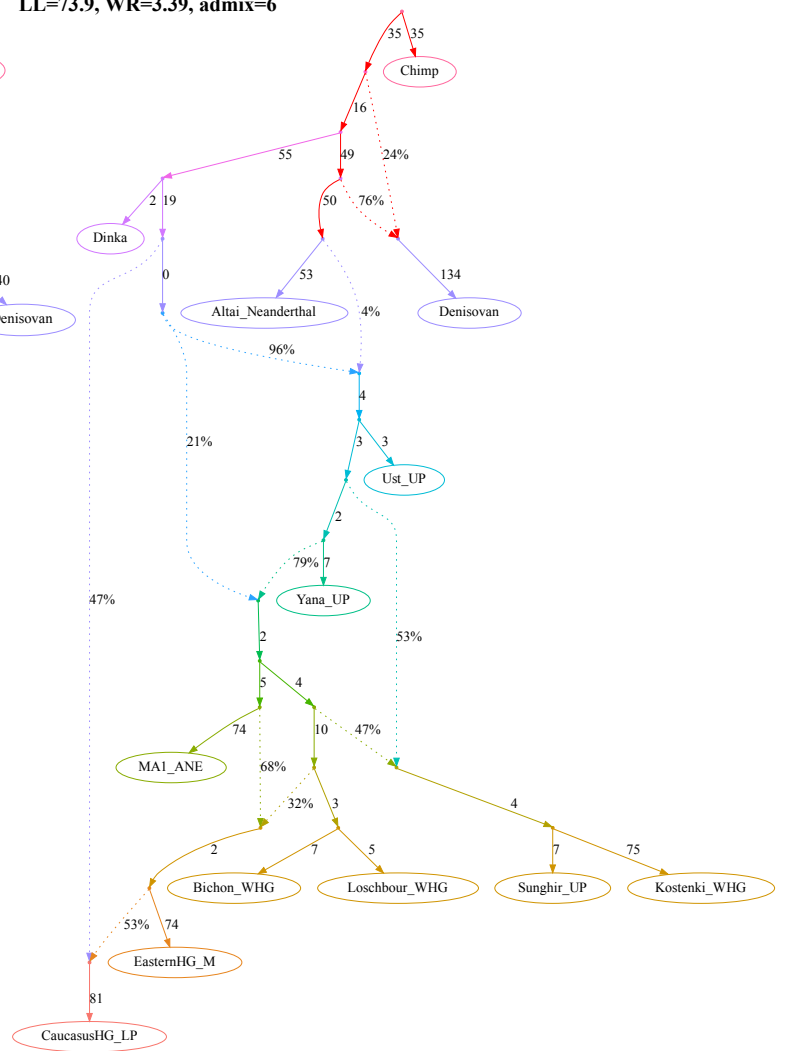
**LL=73.2, WR=3.78, admix=6**



LL=73.4, WR=4.33, admix=6

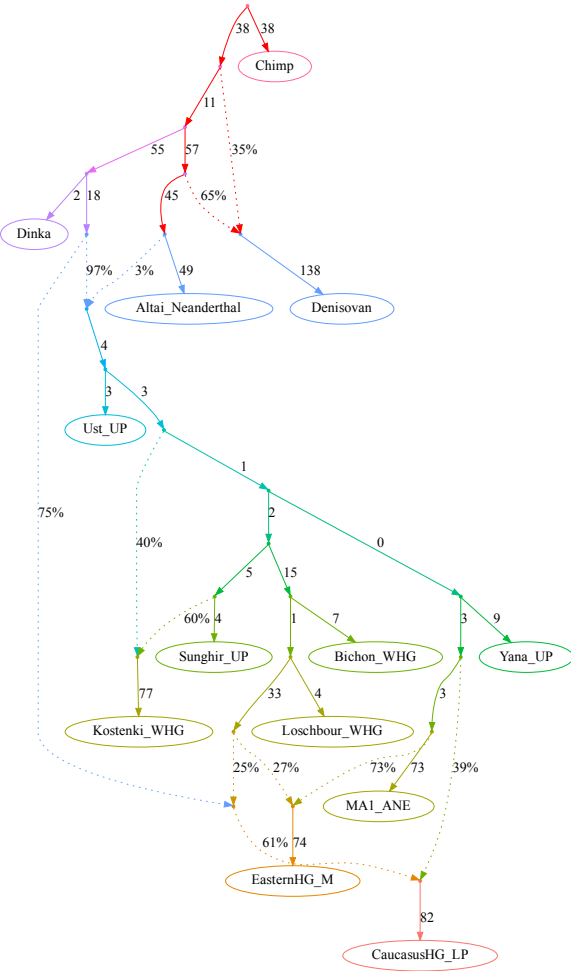


LL=73.9, WR=3.39, admix=6

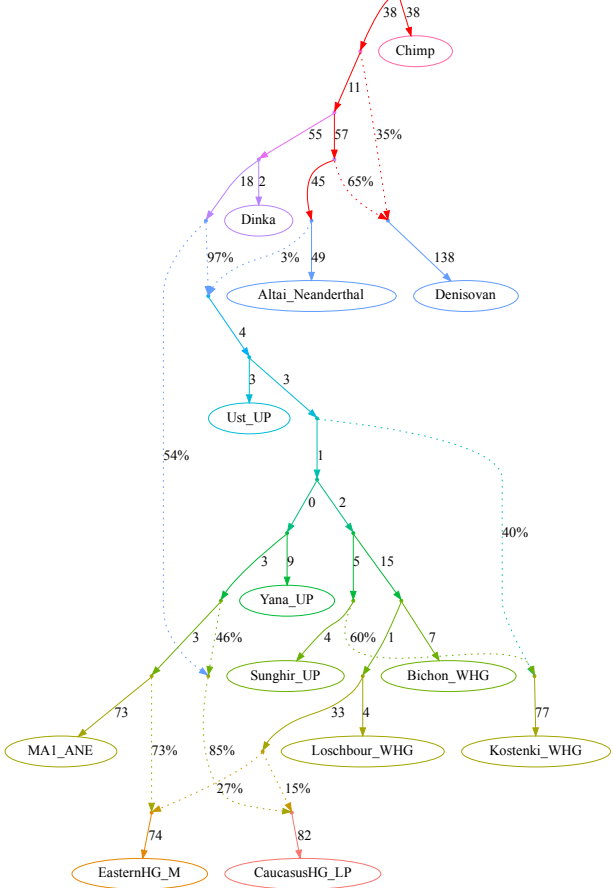


h, models fitting nominally better than the published one and not supporting the claim

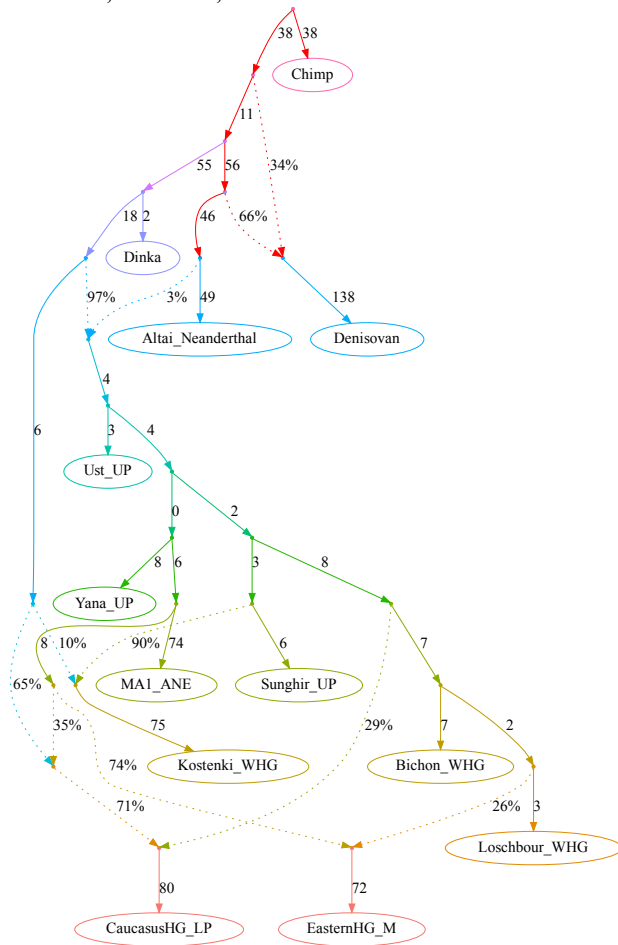
LL=74.2, WR=4.33, admix=6



LL=74.2, WR=4.33, admix=6

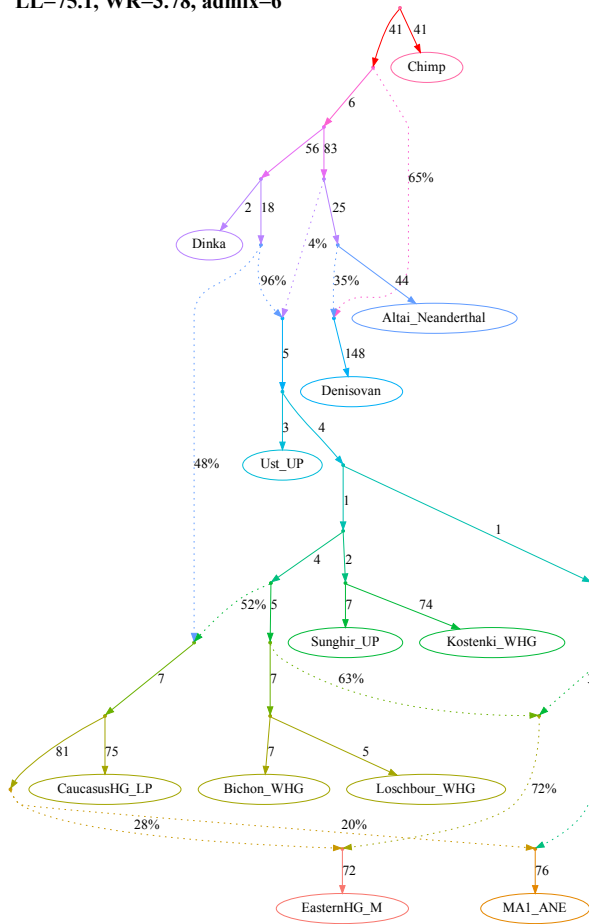


LL=75.1, WR=4.33, admix=6



i, models fitting nominally better than the published one and supporting the claim

LL=75.1, WR=3.78, admix=6



LL=75.9, WR=3.78, admix=6

