

Supplementary Online Content

Li J, Zhou J, Wang H, et al; Chinese Society of Clinical Oncology Breast Cancer Committee Database Collaborative Group. Trends in disparities and transitions of treatment in patients with early breast cancer in China and the US, 2011 to 2021. *JAMA Netw Open*. 2023;6(6):e2321388. doi:10.1001/jamanetworkopen.2023.21388

eFigure 1. Distributions of Patients From 2 Databases

eFigure 2. Age Distributions

eFigure 3. Annual Changes of Clinical Stages at Diagnosis

eFigure 4. Annual Changes of Phenotypes at Diagnosis

eFigure 5. Trends in Neoadjuvant Therapy

eFigure 6. Annual Changes of Surgery

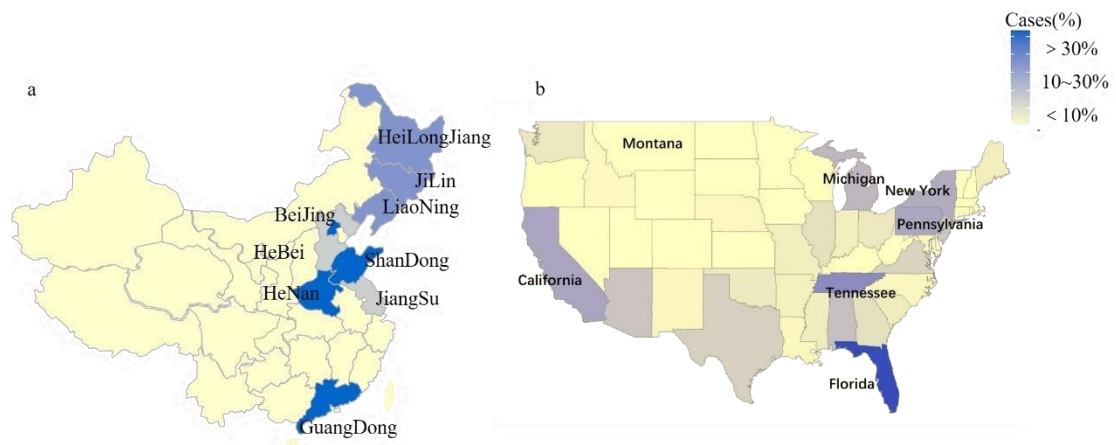
eFigure 7. Trends in Breast-Conserving Surgery for Patients With Clinical T1 Lesions

eFigure 8. Trends in Sentinel Lymph Node Biopsy for Patients With Clinical N0 Lesions

eFigure 9. Trends in Target Therapy for Patients With *ERBB2*-Positive Cancer

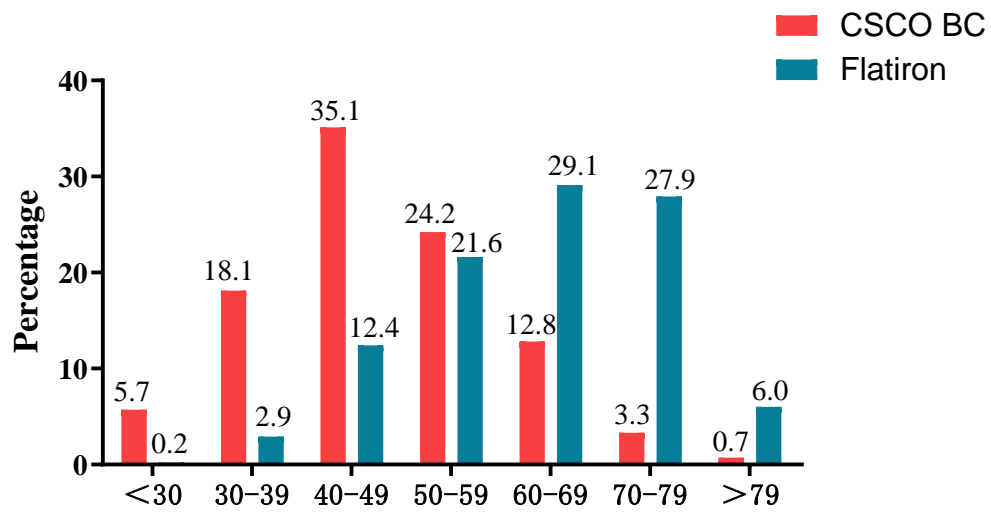
This supplementary material has been provided by the authors to give readers additional information about their work.

eFigure 1. Distributions of Patients From 2 Databases



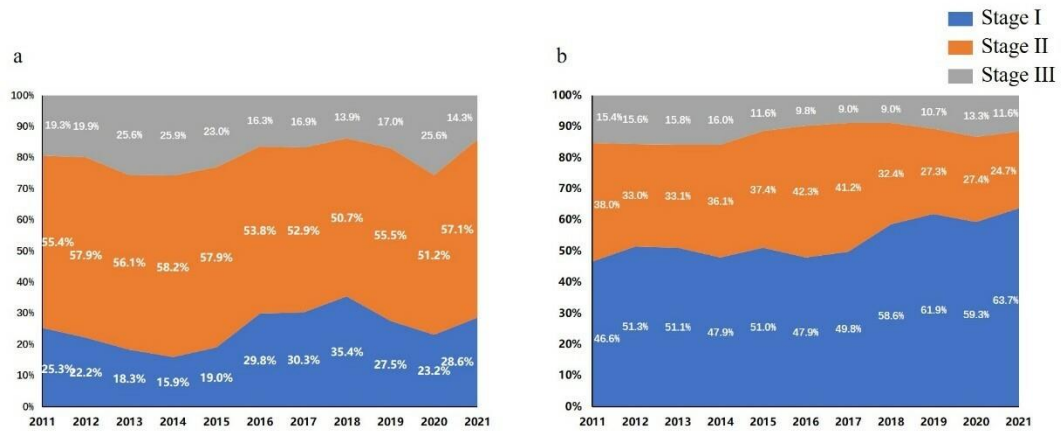
a. patients from CSCO BC database. b. patients from Flatiron database.

eFigure 2. Age Distributions



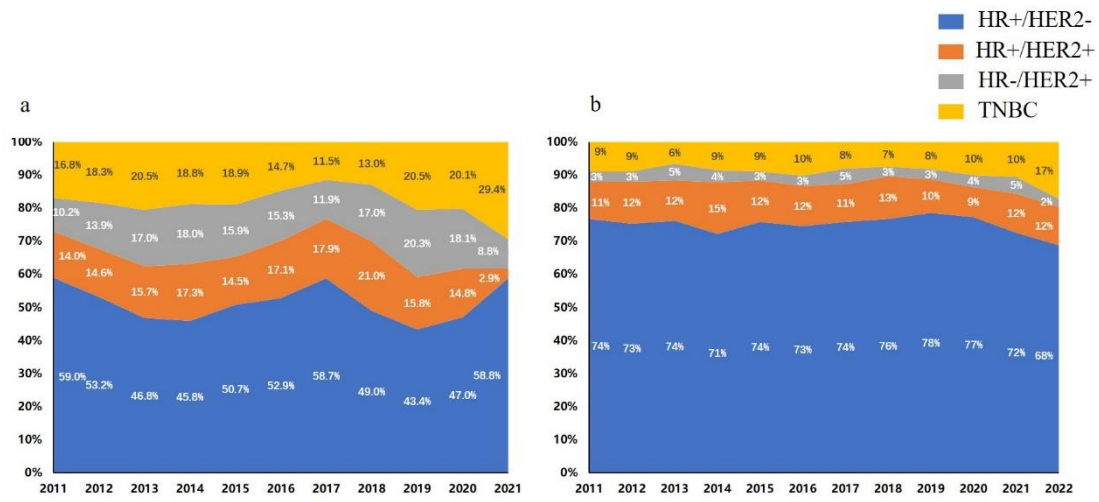
eFigure 3. Annual Changes of Clinical Stages at Diagnosis

a, patients from CSCO BC database, b, patients from Flatiron database

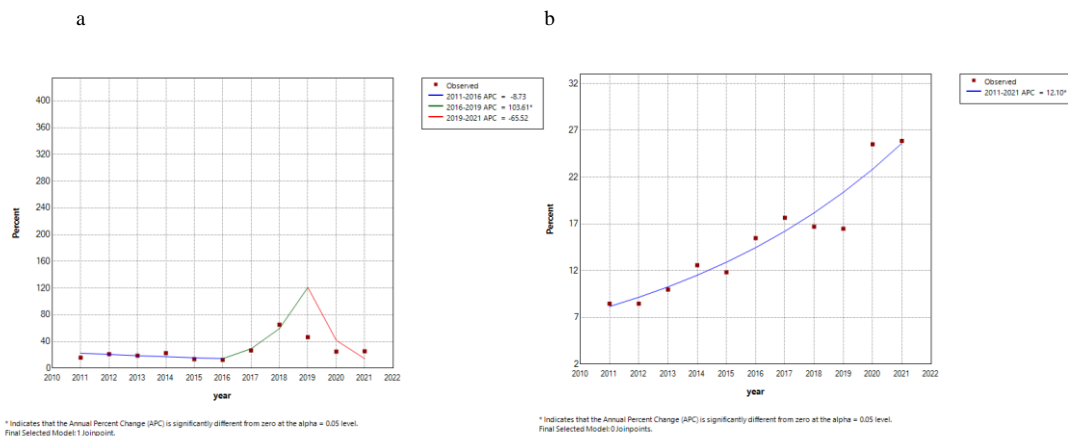


eFigure 4. Annual Changes of Phenotypes at Diagnosis

a, patients from CSCO BC database, b, patients from Flatiron database



eFigure 5. Trends in Neoadjuvant Therapy



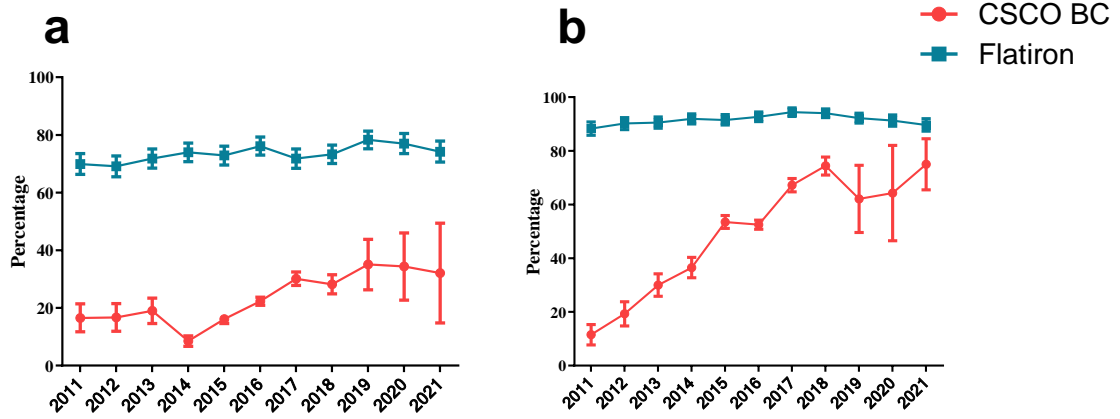
a. joinpoint regression of neoadjuvant therapy for patients from CSCO BC database.

b. joinpoint regression of neoadjuvant therapy for patients from Flatiron database.

In CSCO BC database, AAPC=-4.4% (95%CI: -50.6 to 85.0, p=.89). There were 3 joinpoints: Joinpoint 1(2011-2016), APC= -8.7% (95%CI: -32.2 to 22.9, p=.40). Joinpoint 2(2016-2019), APC=103.6% (95%CI:13.7 to 264.6, p=.03). Joinpoint 3(2019-2021), APC= -65.5% (95%CI: -99.8 to 6385.0, p=.56).

In Flatiron database, there were no joinpoints, AAPC= 12.1% (95%CI:9.3 to 15.0, p < .001).

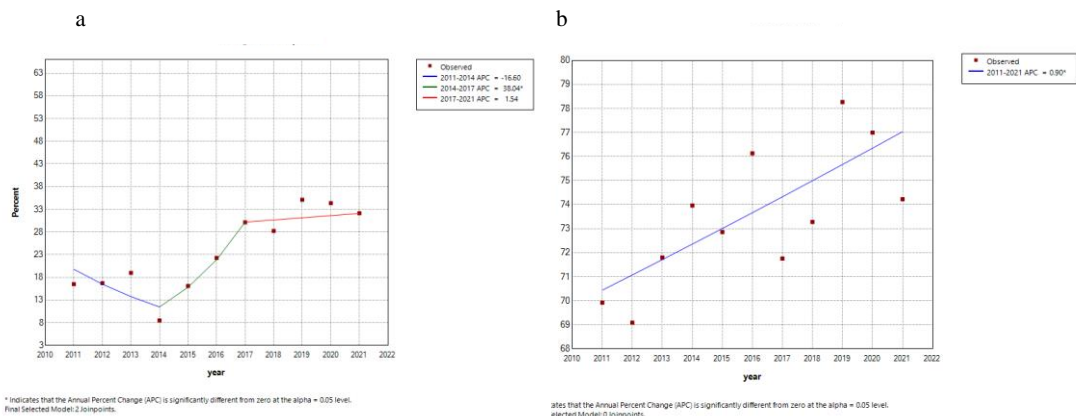
eFigure 6. Annual Changes of Surgery



a: breast conserving surgery for cT1; b: sentinel lymph node biopsy cN0

Error bars represent 95% CIs of estimated margins. Patients received neoadjuvant therapy were excluded

eFigure 7. Trends in Breast-Conserving Surgery for Patients With Clinical T1 Lesions



a. joinpoint regression of breast conserving surgery for patients from CSCO BC database.

b. joinpoint regression of breast conserving surgery for patients from Flatiron database.

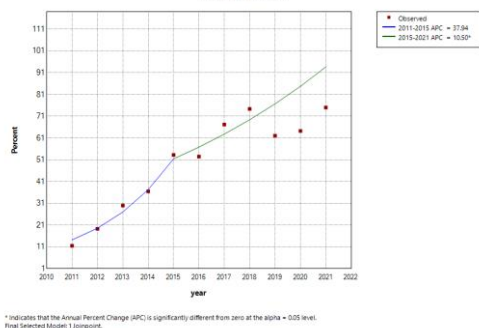
In CSCO BC database, AAPC=5.0% (95%CI: -0.5 to 10.7, p=.08). There were 3 joinpoints: Joinpoint 1(2011-2014), APC= -16.6% (95%CI: -31.5 to 1.6, p=.06). Joinpoint 2(2014-2017), APC= 38.0% (95%CI:22.9 to 55.0, p=.003). Joinpoint 3(2017-2021), APC= 1.5% (95%CI: -11.1 to16.0, p=.74).

In Flatiron database, there were no joinpoints, AAPC= 0.9% (95%CI:0.26 to 1.54, p=.01).

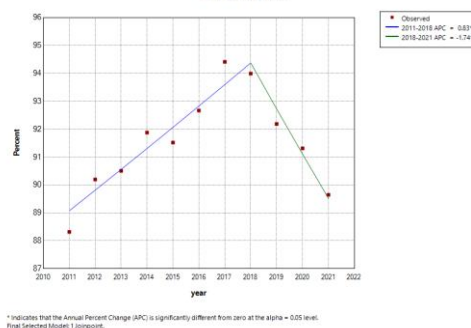
AAPC: average annual percentage of change, APC: annual percentage of change, for patients received neoadjuvant therapy were excluded

eFigure 8. Trends in Sentinel Lymph Node Biopsy for Patients With Clinical N0 Lesions

a



b



a. joinpoint regression of sentinel lymph node biopsy for patients from CSCO BC database.

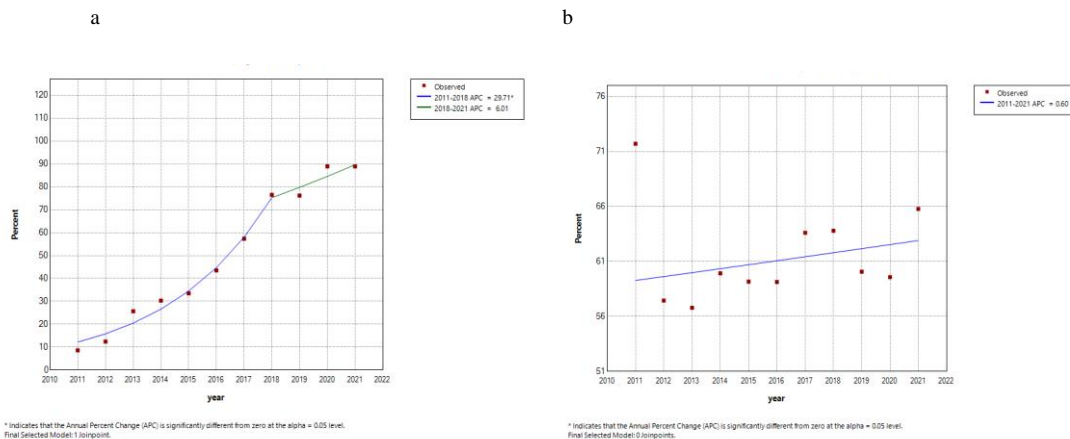
b. joinpoint regression of sentinel lymph node biopsy for patients from Flatiron database.

In CSCO BC database, AAPC=20.8% (95%CI: 6.6 to 36.8, p=.003). There were 1 joinpoint: Joinspoint 1(2011-2015), APC=37.9% (95%CI: -4.8 to 99.8, p=.08). Joinspoint 2(2015-2021), APC= 10.5% (95%CI:1.9 to 19.8, p=.02).

In Flatiron database, AAPC=0.05% (95%CI: -0.3 to 0.4, p=.75). There were 1 joinpoint: Joinspoint 1(2011-2018), APC=0.8% (95%CI: 0.5 to 1.1, p < .001). Joinspoint 2(2018-2021), APC=-1.7% (95%CI: -2.8 to -0.7, p=.007).

AAPC: average annual percentage of change, APC: annual percentage of change, for patients received neoadjuvant therapy were excluded

eFigure 9. Trends in Target Therapy for Patients With *ERBB2*-Positive Cancer



- a. joinpoint regression of target therapy for patients from CSCO BC database.
- b. joinpoint regression of target therapy for patients from Flatiron database.

In CSCO BC database, AAPC=22.1% (95%CI: 17.4 to 26.9, $p < .001$). There were 2 joinpoints: Joinpoint 1(2011-2018), APC= 29.7% (95%CI: 22.7 to 37.1, $p < .001$). Joinpoint 2(2018-2021), APC= 6.0% (95%CI: -3.8 to 16.9, $p=.19$).

In Flatiron database, AAPC=0.6% (95%CI: -0.7 to 1.9, $p=.33$). There were no joinpoints.

AAPC: average annual percentage of change, APC: annual percentage of change