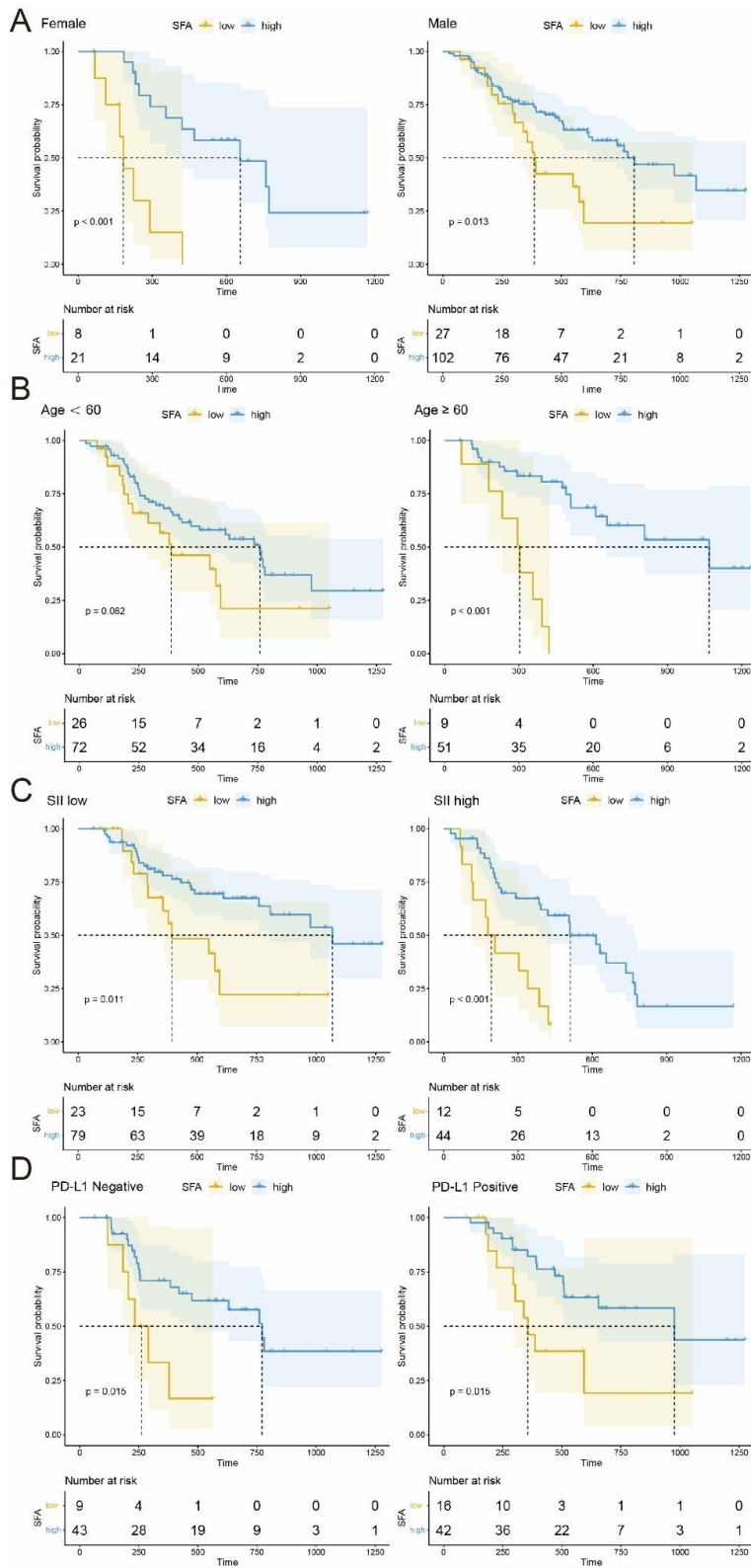


**Table S1. Internal validation for overall survival by 1000 bootstrap resampling**

Variables	Observed HR	SE	Bootstrap 1000 95% CI	<i>p</i>
Line of therapy [1]	Reference			
2	1.528	0.315	0.804-2.737	0.150
3 or more	1.640	0.320	0.865-3.114	0.109
HER2 positive [negative]	Reference			
Positive	0.465	0.398	0.209-0.996	<b>0.030</b>
NA	0.600	3.715	0.000-2.465	0.424
SII $\geq 823 \times 10^9/L$ [ $<823 \times 10^9/L$ ]	2.488	0.254	1.570-4.293	<b>0.001</b>
CT-determined sarcopenia	1.410	0.274	0.848-2.430	0.174
SFA high [low]	0.422	0.311	0.216-0.725	<b>0.004</b>

Abbreviations: HR, hazard ratio; SE, standard error; CI, confidence interval;

**Figure S1. Kaplan–Meier survival curves with log-rank tests were conducted according to sex, age, SII and PD-L1 expression between low and high SFA groups.**



**Figure S2.** Kaplan–Meier survival curves with log-rank tests were conducted according to sex,

age, SII and PD-L1 expression between low and high SII groups.

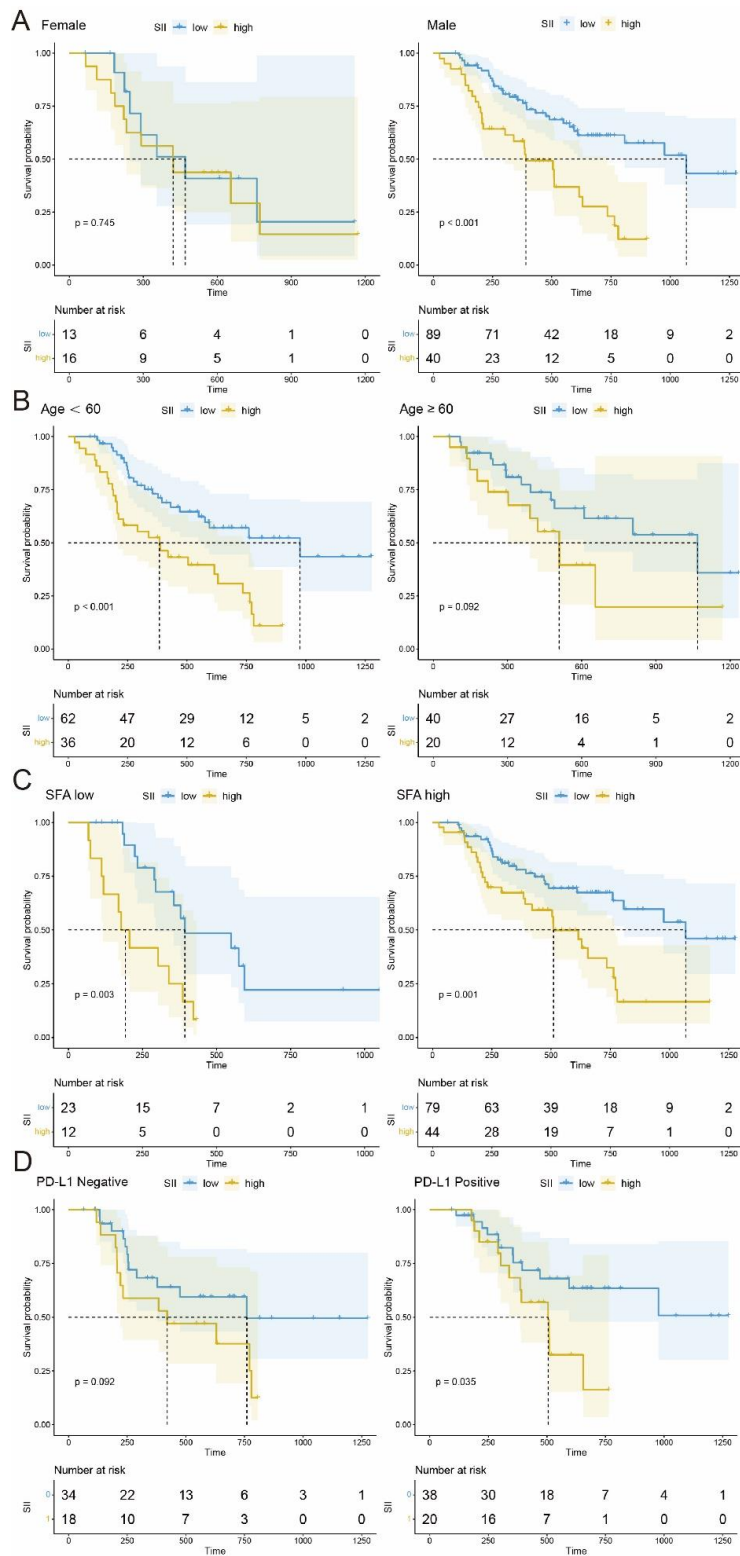


Figure S3. Clinical characteristics and body composition parameters of high and low SFA

groups.

