

Fig. S1. CSF volumes in SHRs and WKY rats. **a** Third ventricle volumes in WKY rats (14.2 ± 0.4 mm³, n = 5) and SHRs (12.3 ± 1.1 mm³, n = 5) quantified by MRI. **b** Fourth ventricle volumes in WKY rats (6.3 ± 0.6 mm³, n = 5) and SHRs (7.5 ± 0.9 mm³, n = 5) quantified by MRI. **c** Other CSF volumes in WKY rats (178 ± 10 mm³, n = 5) and SHRs (130 ± 19 mm³, n = 5) quantified by MRI. Data are presented as mean \pm standard deviation and statistical significance was tested with an unpaired two-tailed t-test or a Mann-Whitney test depending on normality. ** P < 0.01. NS = not significant.

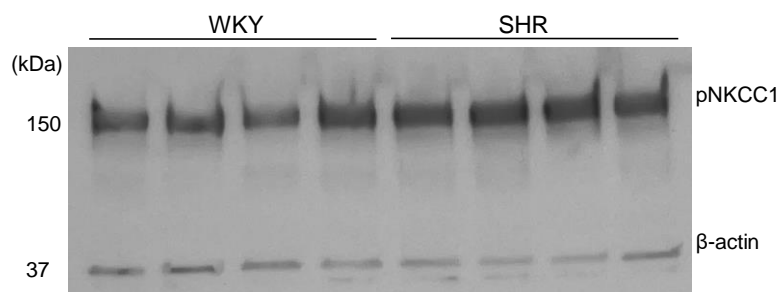


Fig. S2. Western blot. Raw western blot of choroid plexus acutely isolated from WKY rats (n = 4) and SHRs (n = 4) stained with anti-pNKCC1 and anti β -actin antibodies.