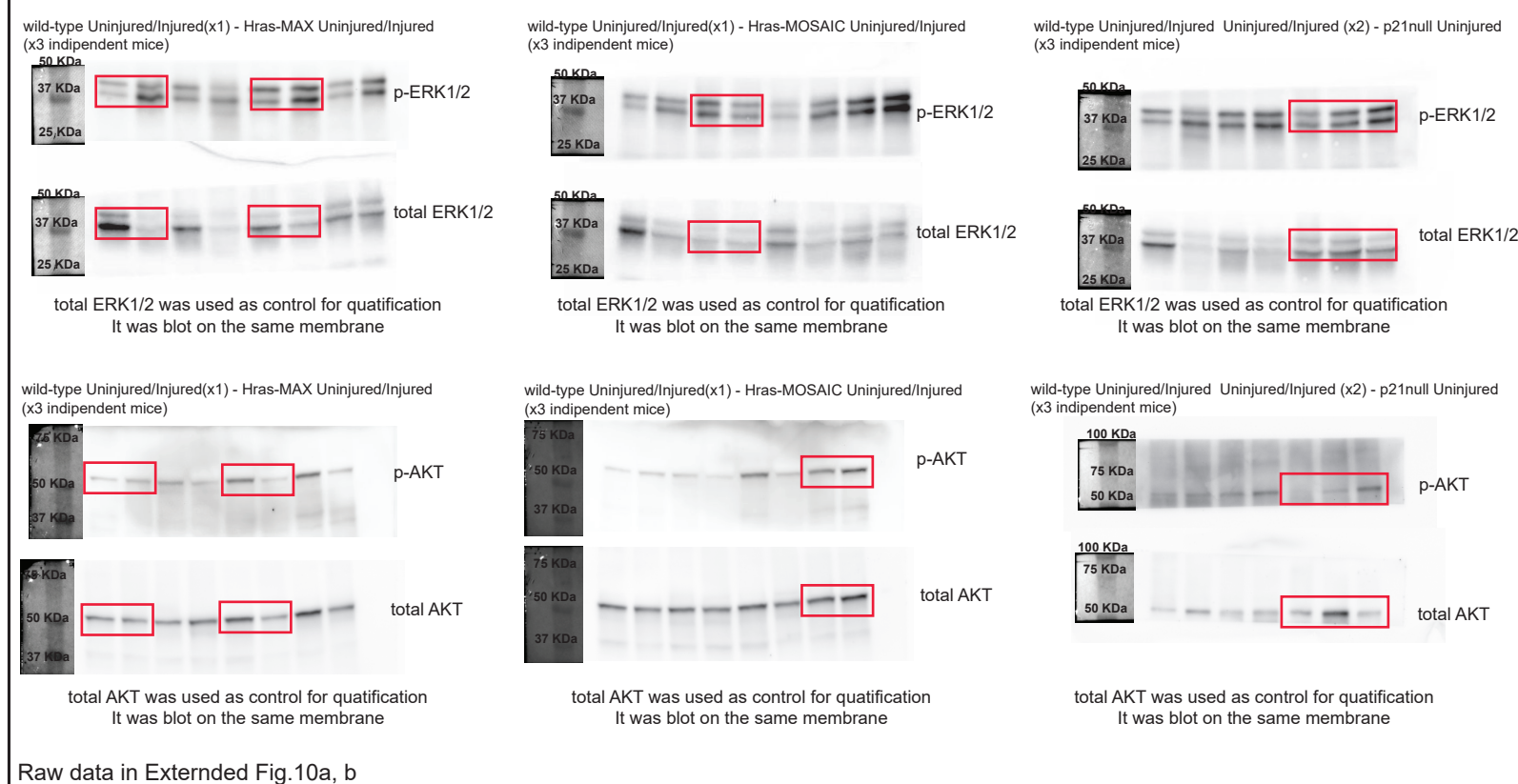
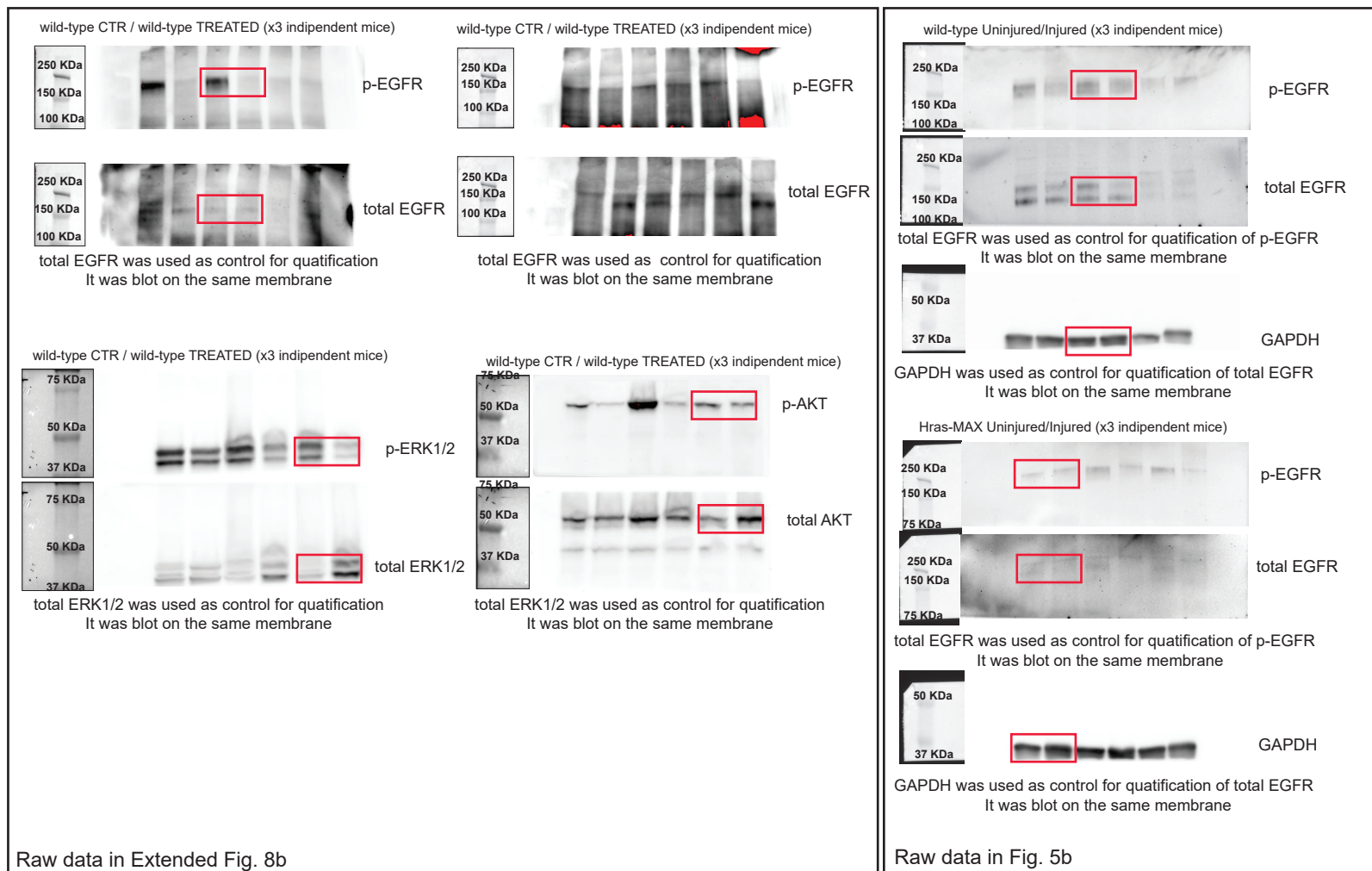

Supplementary information

Injury prevents Ras mutant cell expansion in mosaic skin

In the format provided by the
authors and unedited

SI Figure 1



SI Figure 1 – Uncropped and unprocessed immunoblots of Figure 5b (n=3 mice for each condition), Extended Figure Data Figure 8b (n=6 mice p-EGFR / EGFR, n=3 mice p-ERK1/2 / ERK1/2 and p-AKT / AKT) and Extended Data Figure 10 a, b (n=4 mice wild-type, n=3 mice HrasG12V/+ -mosaic, n=3 mice HrasG12V/+ -max). For statistical and densitometry analyses see figure legends and data sources. Membrane were cut around the molecular weight of interest before blotting. Molecular markers were acquired with colorimetric setting. Proteins were detected by western blotting, using the indicated antibodies and the red rectangles show the cropping location.