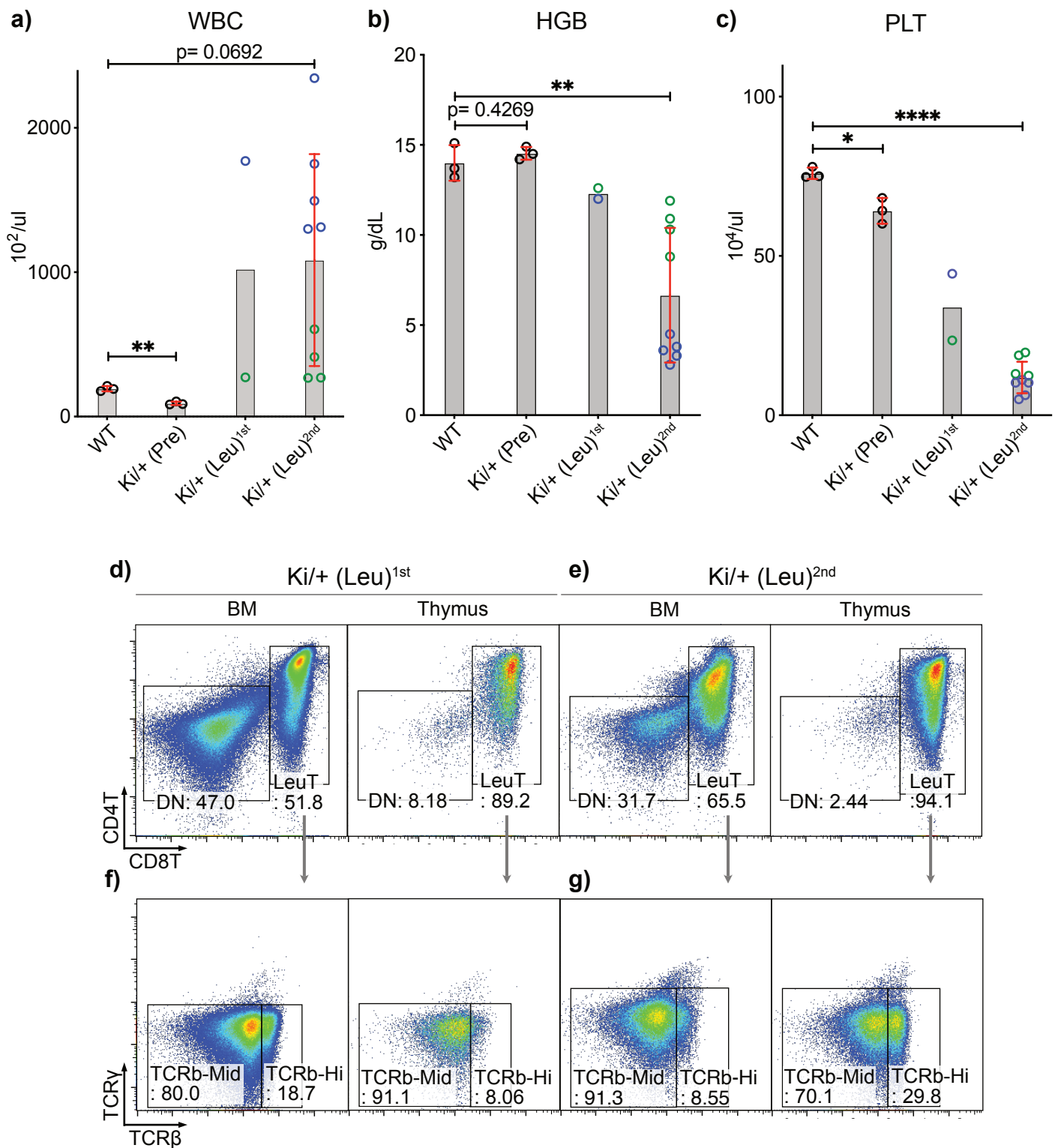


Figure S4 : Complete blood counts of miR-142-55A>G leukemia mice second transplantation analysis and Representative FACS plots of Ki/+ (Leu)^{1st} or Ki/+ (Leu)^{2nd}.



a-c) Complete blood counts (CBCs) for the peripheral blood (PB) of +/+ and Ki/+ (Pre) mice (n = 3) 2 months post-transplantation, Ki/+ (Leu)^{1st} mice (n = 2), and moribund Ki/+ (Leu)^{2nd} mice (n = 9). Ki/+ (Leu)^{1st} mouse population, and the Ki/+ (Leu)^{2nd} population after secondary transplantation are indicated using the same colors (blue or green).

d, e) Representative FACS plots showing the proportions of bone marrow (BM), thymus unstained other cells (DN), and LeuT-cells in Ki/+ (Leu)_{1st} (d) or Ki/+ (Leu)_{2nd} (e) from the transplanted BMs.

f, g) Representative FACS plots showing proportion of BM thymus T-cell receptors (TCRs) in Ki/+ (Leu)^{1st} (d) or Ki/+ (Leu)^{2nd} from the transplanted BMs.