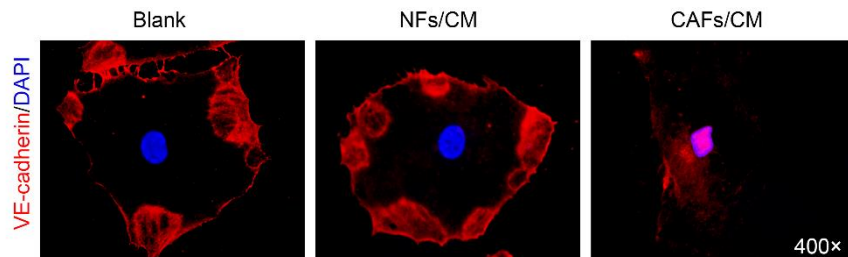


1 **Supplementary Figures:**

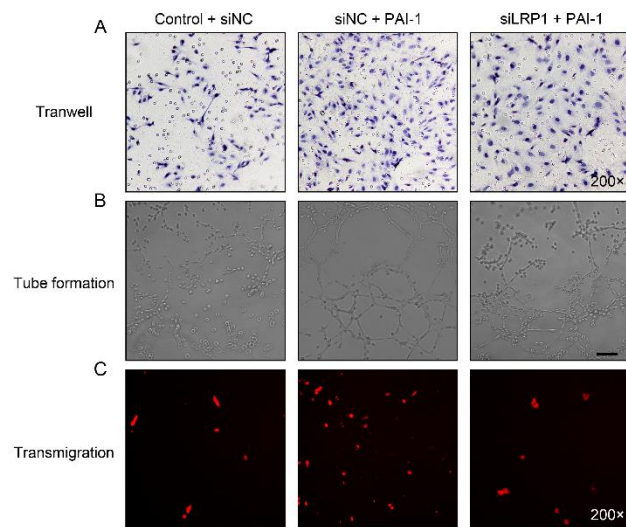
2

3 **Figure S1. HDLEC monolayers incubated with the indicated CM for 24 h were analysed**  
4 **by immunofluorescence (IF) staining of VE-cadherin (red). Blue indicates the nucleus.**



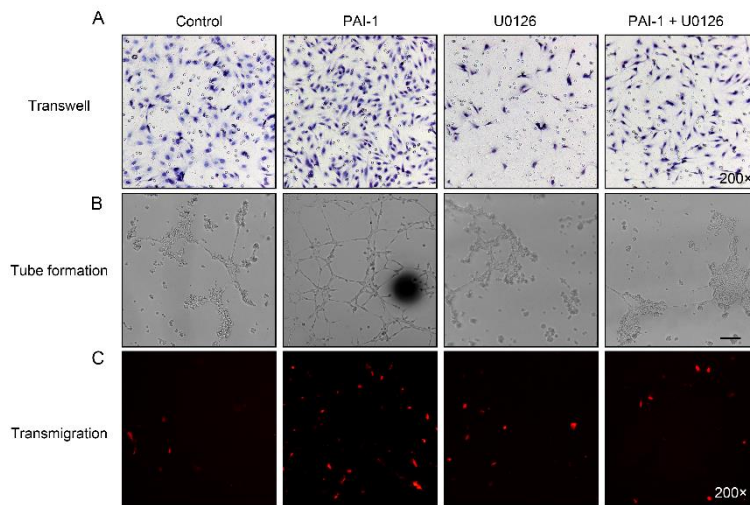
7 **Figure S2. siLRP1 abolished the biological effects of PAI-1 on HDLECs, related to Fig 5C.**

8 **A.** Representative micrographs of the Transwell assay with HDLECs. **B.** Representative  
9 micrographs of the tube formation assay. Scale bar, 50  $\mu$ m. **C.** HDLEC monolayer following the  
10 indicated treatments described in **Fig. 5C** and quantification of SiHa-mCherry cell migration.



13 **Fig S3. Suppression of ERK1/2 phosphorylation by U0126 in HDLECs affected the**  
14 **biological behaviour of PAI-1, related to Fig 5F.**

15 **A.** Representative micrographs of the Transwell assay in HDLECs. **B.** Representative micrographs  
16 of the tube formation assay. Scale bar, 50  $\mu$ m. **C.** HDLEC monolayer following the indicated  
17 treatments described in **Fig. 5G** and quantification of SiHa-mCherry cell migration.

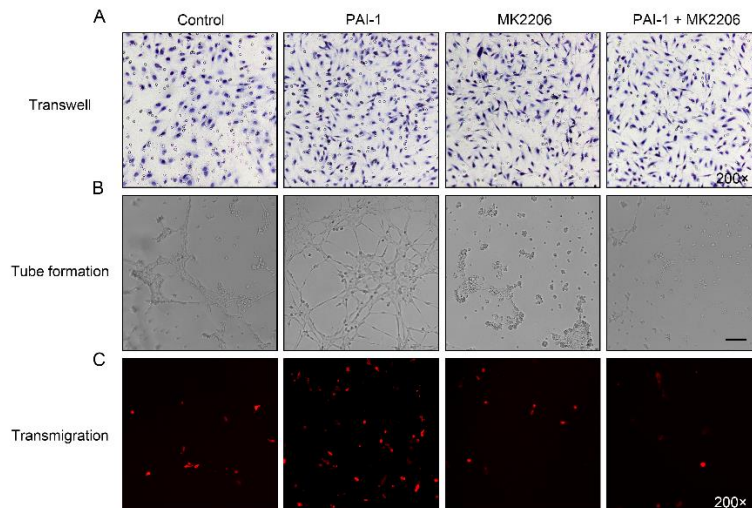


18

19

20 **Fig S4. Suppression of AKT phosphorylation by MK2206 in HDLECs affected the**  
 21 **biological behaviour of PAI-1, related to Fig 5G.**

22 **A.** Representative micrographs of the Transwell assay with HDLECs. **B.** Representative  
 23 micrographs of the tube formation assay. Scale bar, 50 μm. **C.** HDLEC monolayer following the  
 24 indicated treatments described in **Fig. 5F** and quantification of SiHa-mCherry cell migration.



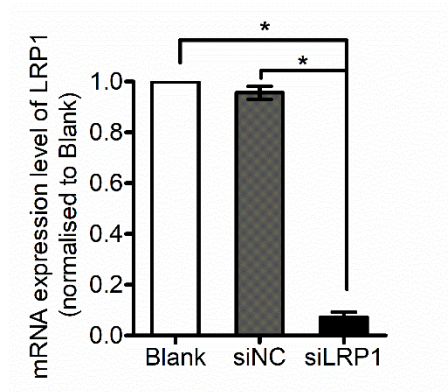
25

26

27 **Fig S5. Validation and efficacy of LRP1 gene silencing was performed by qPCR.**

28 **Normalized gene expression over GAPDH is shown with the means ± SD of three**

29 independent experiments. \* $P < 0.05$ .



30