

SUPPLEMENTARY FIGURE LEGENDS

Figure S1: TLR3 has a positive prognostic value in several types of sarcomas

(A) Expression level of TLR3 in normal tissues. Publicly available transcriptomic data obtained from GTEX portal. **(B)** Event-free survival probability of FP-RMS samples stratified according to TLR3 expression (*p-value = 0.049, log-rank test). Microarray transcriptomic dataset was provided by Javed Khan's laboratory. **(C)** Overall survival probability of FN-RMS samples stratified according to TLR3 expression (p-value = 0.078, log-rank test). Publicly available E-TABM-1202 transcriptomic data were downloaded from ArrayExpress. **(D)** Overall survival probability of Ewing sarcoma samples stratified according to TLR3 expression (**p-value < 0.0001, log-rank test). Publicly available transcriptomic data from Kuijjer's cohort were downloaded from R² cancer. **(E)** Overall survival probability of leiomyosarcomas (TCGA 2022-v32 Sarcoma cohort), stratified according to TLR3 expression (**p-value < 0.0001, log-rank test).

Figure S2: Poly(I:C) treatment drives TLR3-induced cell death in pediatric sarcoma cells.

(A) Immunoblot of TLR3 from MNNG/HOS osteosarcoma cells, treated or not with IFN-1 for 24 h. GAPDH is used as a loading control. One representative image out of 3 independent experiments is shown. Asterisks denote unspecific bands. **(B)** Immunoblot of TLR3 from the patient-derived cell line RMS-CLB1, treated or not with IFN-1 for 24 h. GAPDH is used as a loading control. One representative image out of 3 independent experiments is shown. Asterisks denote unspecific bands. **(C)** Viability of MNNG/HOS osteosarcoma cells treated or not with IFN-1 and/or Poly(I:C) for 72 h was analyzed by cytometry (DAPI/Acridine Orange). Mean values ± s.t.d are represented (n=3, *p-value = 0.05). **(D)** Viability of the patient-derived RMS-CLB1 cell line treated or not with IFN-1 and/or Poly(I:C) for 72 h was analyzed by cytometry (DAPI/Acridine Orange). Mean values ± s.t.d are represented (n=3, *p-value = 0.05).

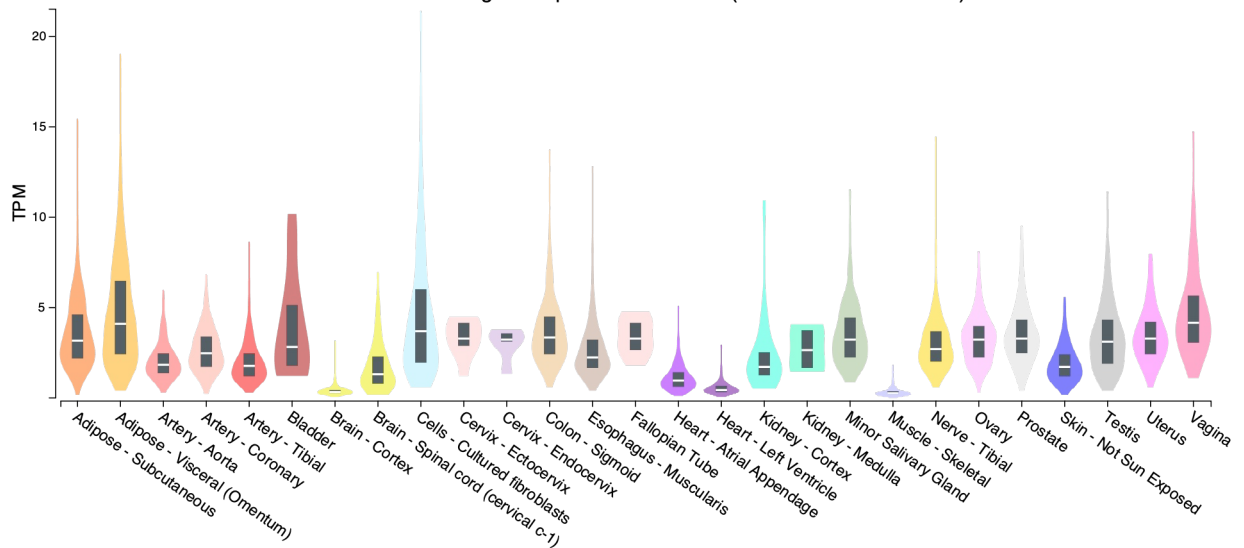
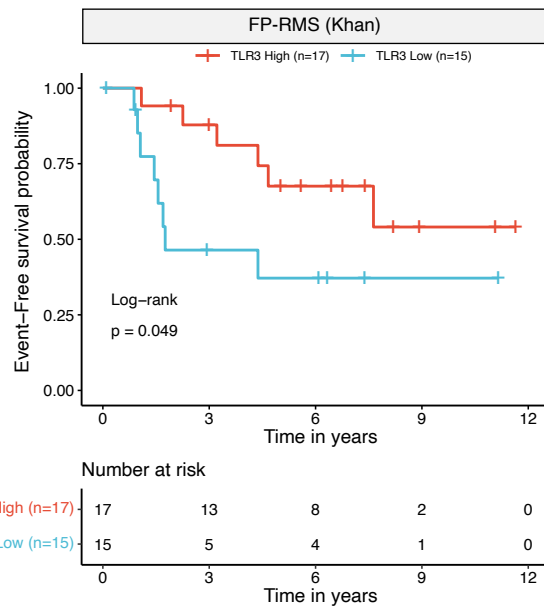
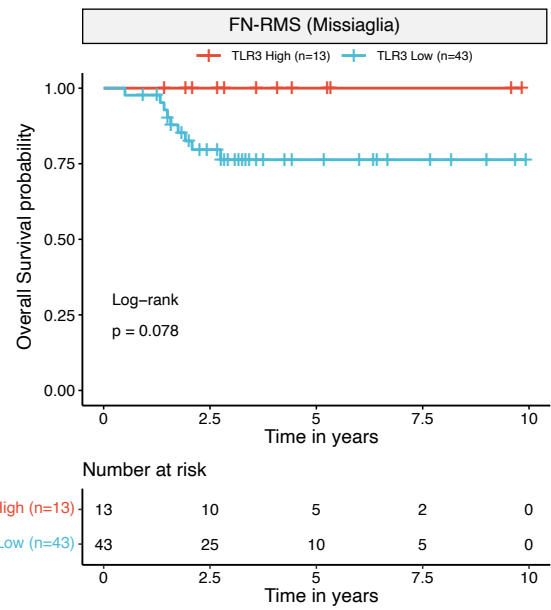
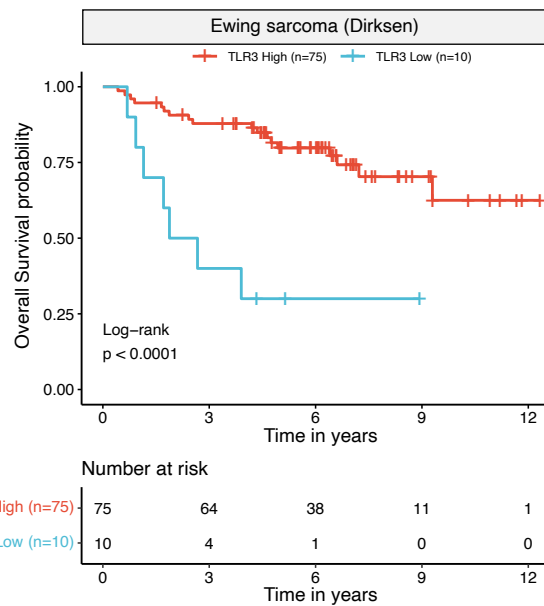
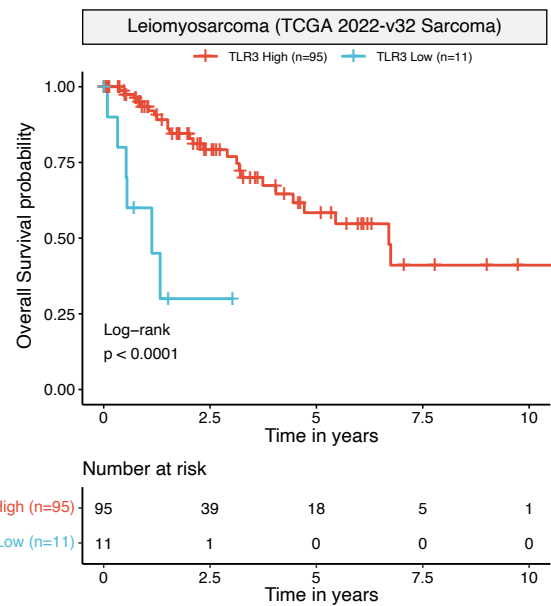
Figure S3: RD and RH30 rhabdomyosarcoma cell lines homozygous for the L412F variant of TLR3 are resistant to Poly(I:C).

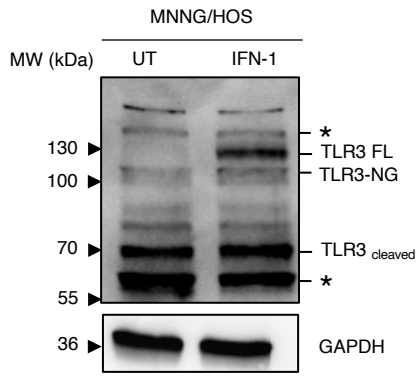
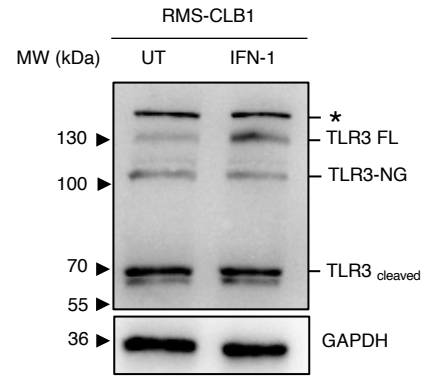
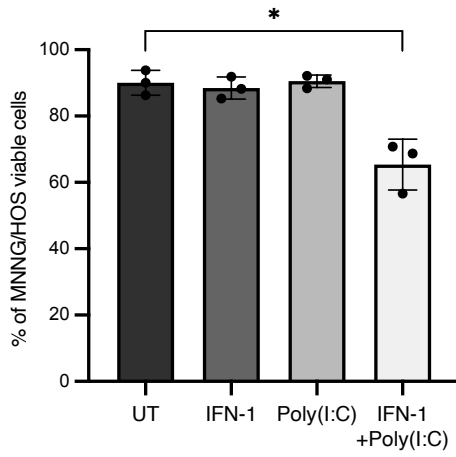
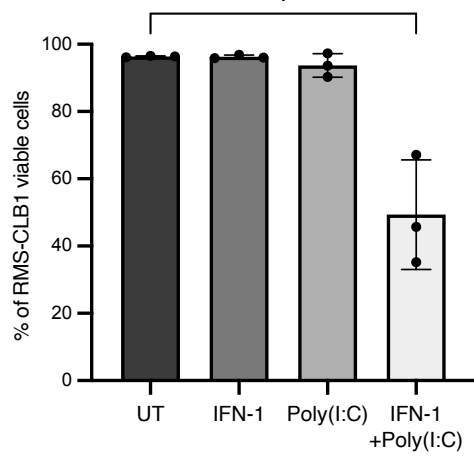
(A) Immunoblot of TLR3 from RD rhabdomyosarcoma cells, treated or not with IFN-1 for 24 h. GAPDH is used as a loading control. One representative image out of 3 independent experiments is shown. Asterisks denote unspecific bands. **(B)** Poly(I:C) does not lead to an

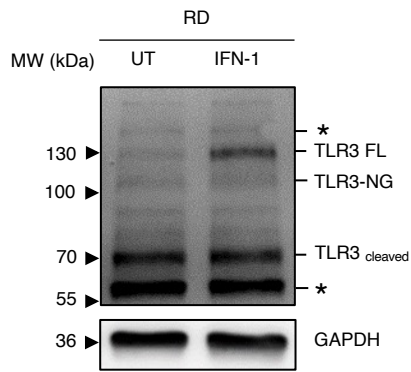
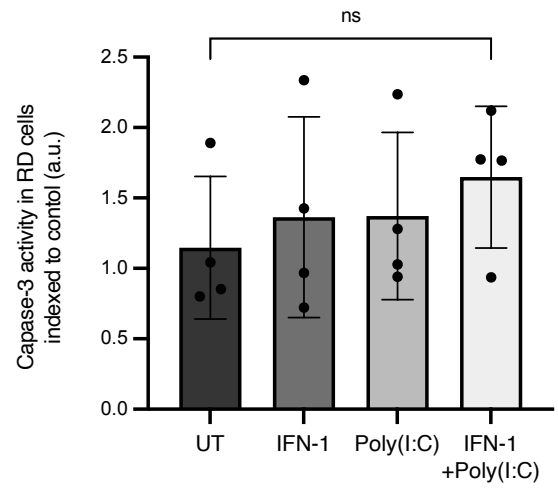
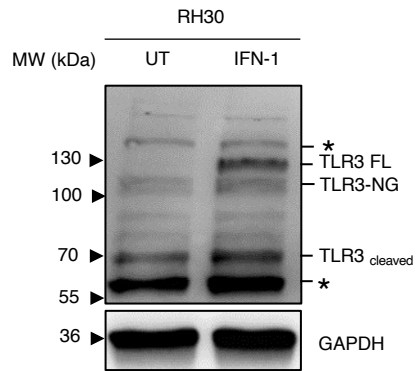
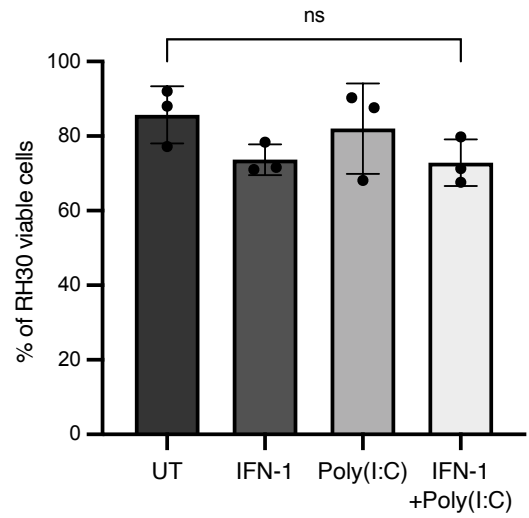
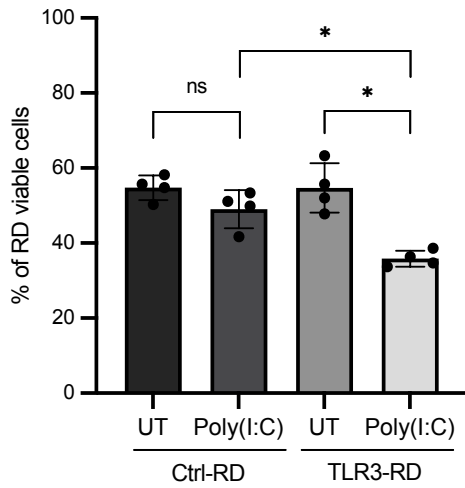
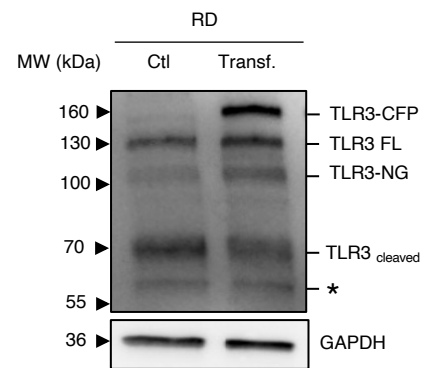
increase in Caspase-3 activity in RD cells *in vitro*. Mean values \pm s.t.d of caspase-3 activity quantified according to the fluorescence emitted by cleavage of a DEVD-AFC peptide are represented (n = 4, ns p-value = 0.1714). **(C)** Immunoblot of TLR3 from RH30 rhabdomyosarcoma cells, treated or not with IFN-1 for 24 h. GAPDH is used as a loading control. One representative image out of 3 independent experiments is shown. Asterisks denote unspecific bands. **(D)** Viability of RH30 RMS cells treated or not with IFN-1 and/or Poly(I:C) for 72 h was analyzed by cytometry (DAPI/Acridine Orange). Mean values \pm s.t.d are represented (n = 3, ns p-value = 0.1). **(E-F)** Transient transfection of the WT allele of TLR3 is sufficient to restore cell death upon Poly(I:C) treatment in RD cells. **(E)** Viability of RD rhabdomyosarcoma cells transfected or not with TLR3 and treated with Poly(I:C) for 48 h was analyzed by cytometry (DAPI/Acridine Orange). Mean values \pm s.t.d are represented (n=3, *p-value < 0.05). **(F)** Immunoblot of transfected CFP tagged-TLR3 in RD rhabdomyosarcoma cells. One representative image out of 3 independent experiments is shown. Transfected and endogenous forms of TLR3 are indicated. Asterisks denote unspecific bands. Ctl: RD transfected with an empty vector. Transf. : RD transfected with a CFP-TLR3 L412 encoding vector.

A

Bulk tissue gene expression for TLR3 (ENSG00000164342.12)

**B****C****D****E**

A**B****C****D**

A**B****C****D****E****F**

Supplementary Table 1 – Cutoffs used for the survival analyses

Figure	Dataset	Tumor	TLR3 Cutoff	Cutoff method	Log2 normalised expression
1B	Missiaglia	FP-RMS	2,659058	Maxstat	Yes
1C	Kuijjer	Osteosarcoma	176,7	KaplanScan	No
S1A	Khan	FP-RMS	7,262	Maxstat	Yes
S1B	Missiaglia	FN-RMS	3,427901	Maxstat	Yes
S1C	Dirksen	Ewing Sarcoma	31,8	KaplanScan	No
S1C	TCGA 2022-v32 Sarcoma	Leiomyosarcoma	1,95	Maxstat	Yes