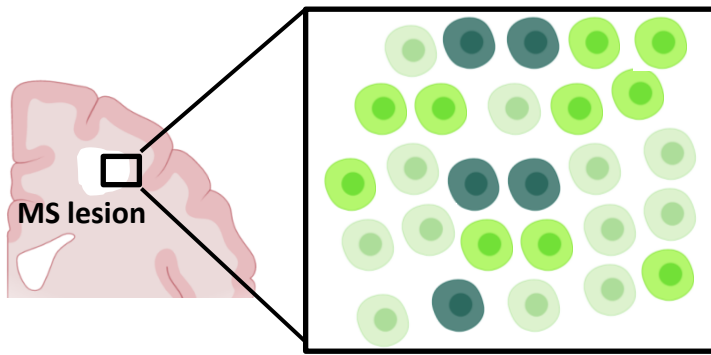
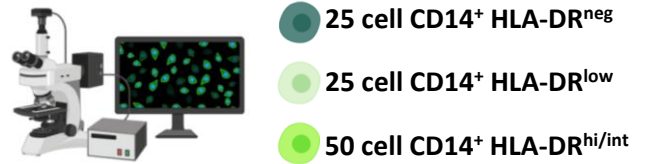


a

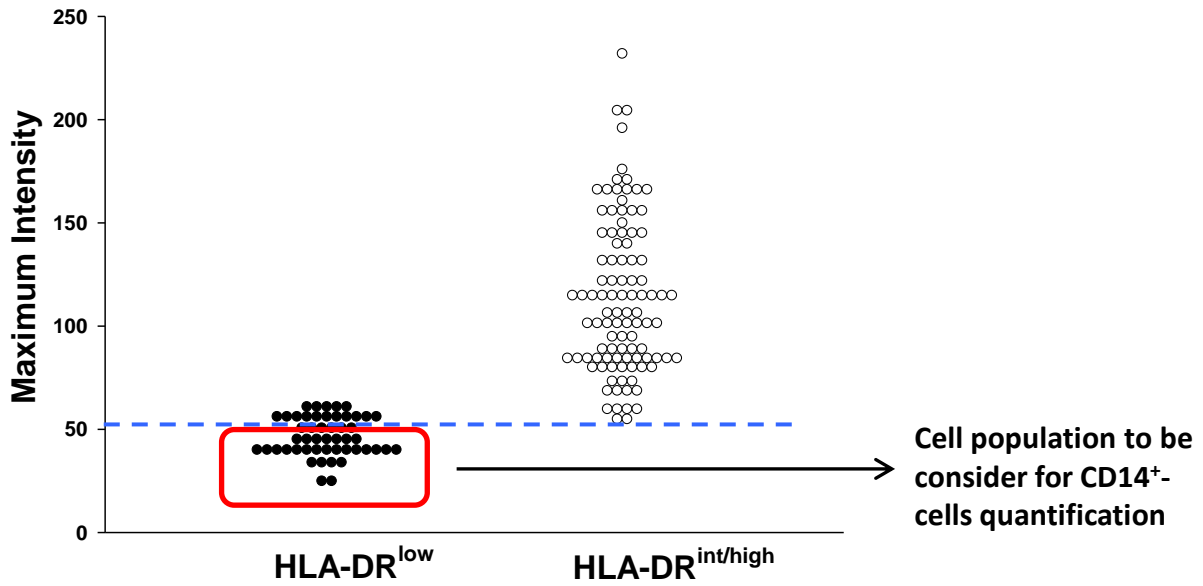
Quantification of HLA-DR fluorescence intensity



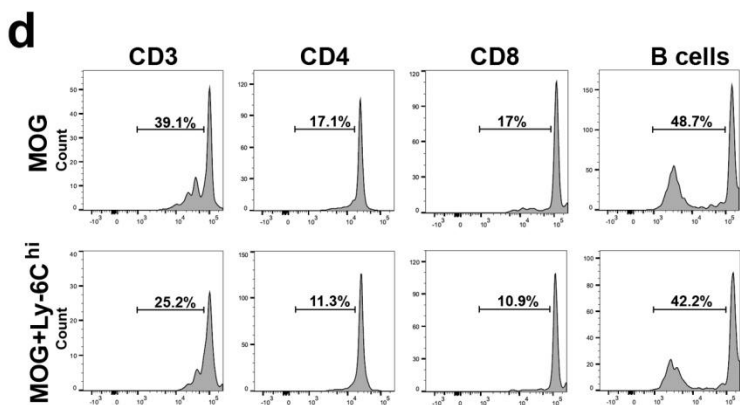
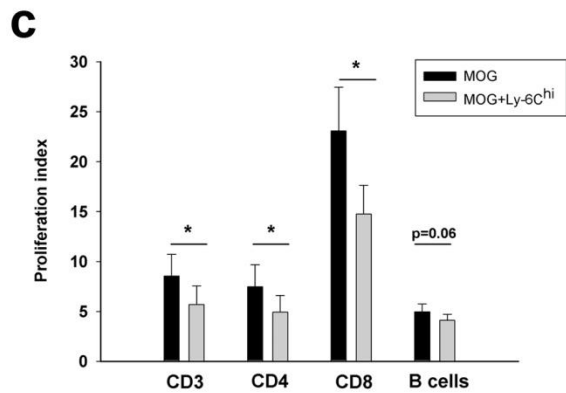
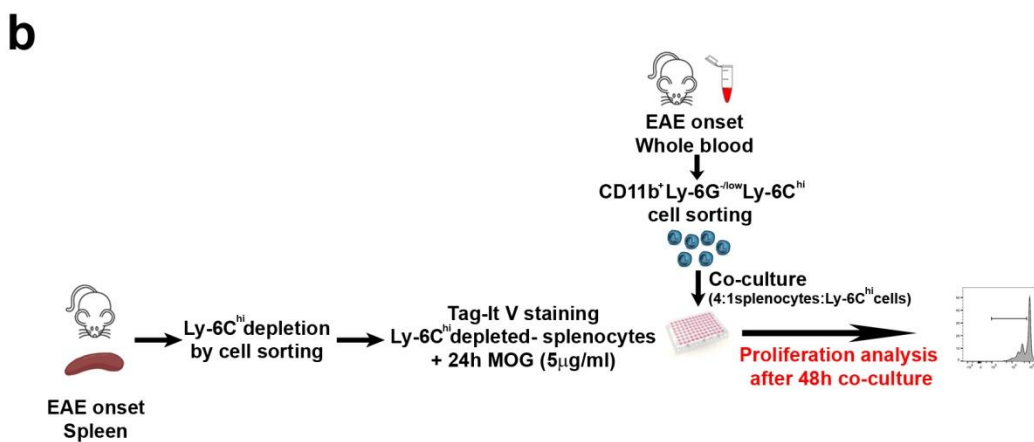
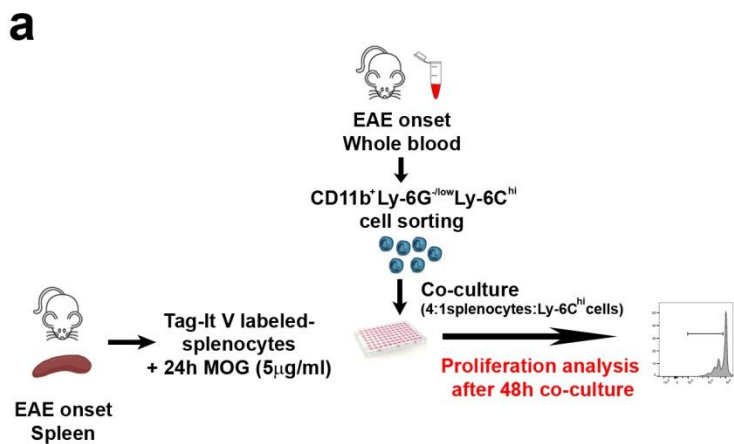
ROC curve analysis

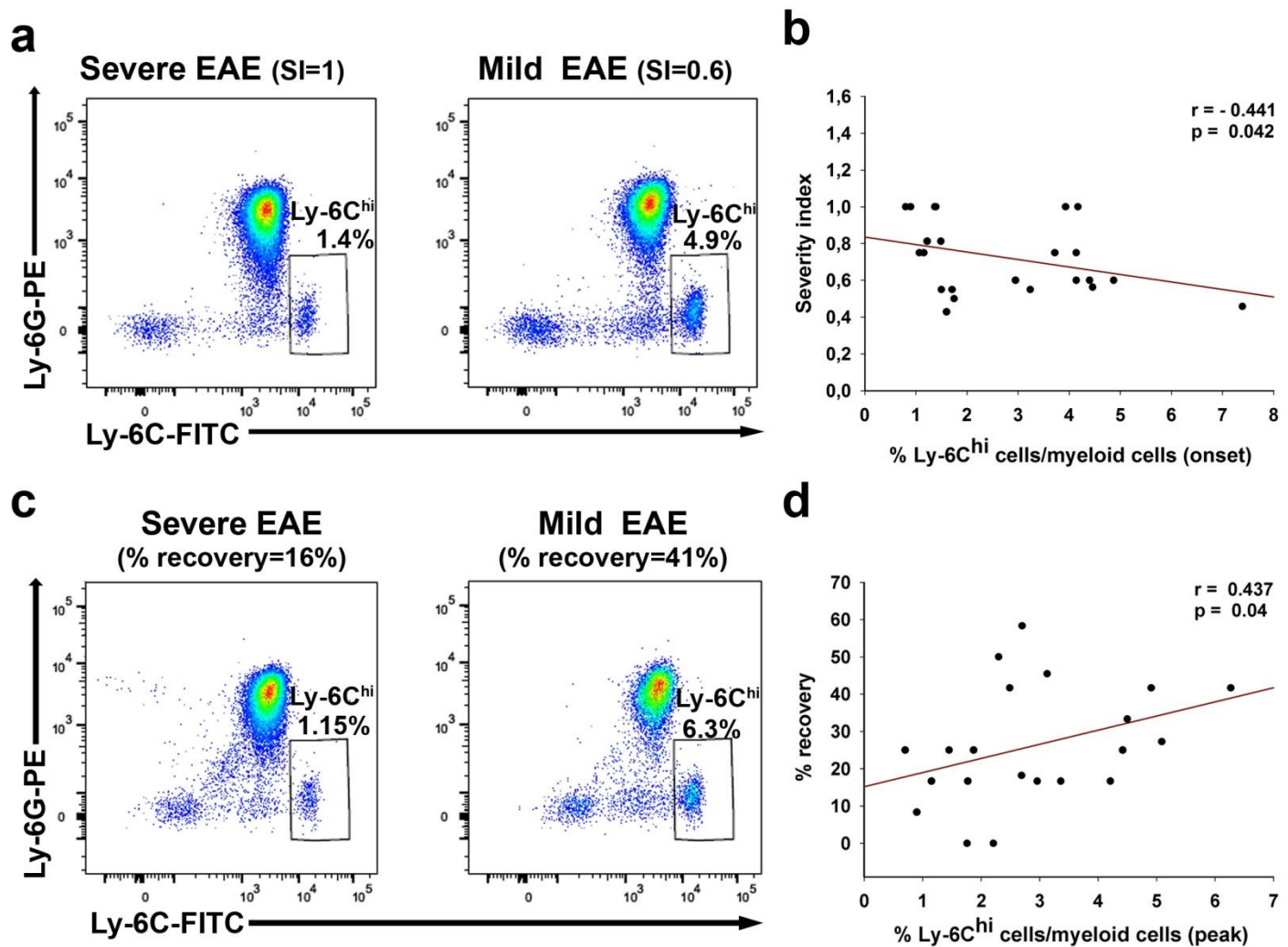
↓

Cut-off value of maximum HLA-DR fluorescence intensity to identified HLA-DR^{low} cells and quantified the density CD14⁺ HLA-DR^{-/low}

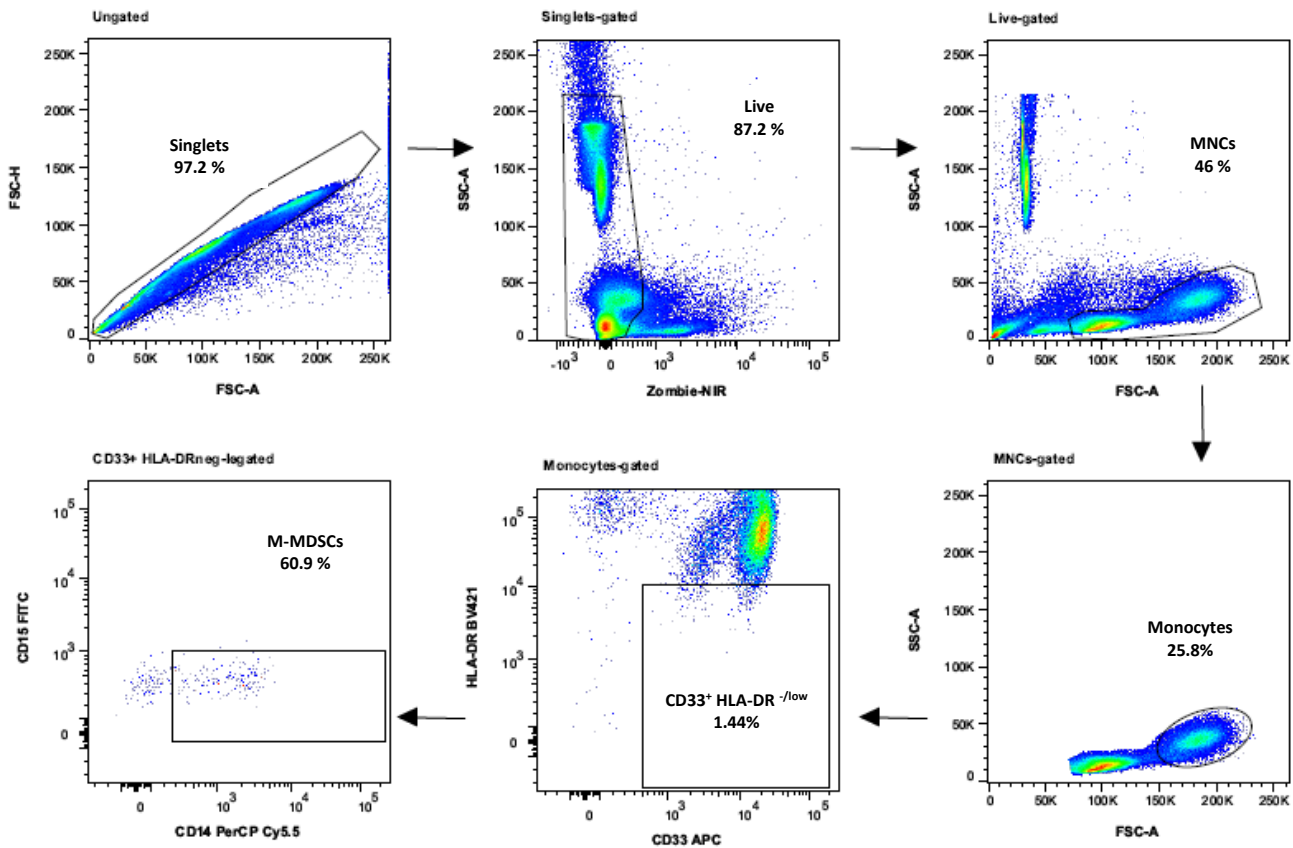
b

Suppl. Figure 1





Suppl. Fig. 3



Suppl. Fig. 4

Suppl. Table 1. Demographic table of the MS patients enrolled for the PMBC follow up study

Epidemiological data	All MS patients n = 47	MS ≤30 days n = 30	MS >30 days n = 17	HC n = 26
Age^a	36.86 (9.03)	35.13 (9.44)	39.11 (8.12)	34.77 (10.28)
Male/female (%female)	15/32 (68.09)	10/20 (66.66)	5/12 (70.59)	12/14 (53.84)
EDSS baseline^b	3 (2-4)	3 (3-4)	1.75 (1-2)	NA
EDSS 12m^b	1 (0-2)	0.5 (0-1)	1 (0-2)	NA
Gd+ lesions				

HC: Healthy controls. ^a = mean ± SD. ^b = median ± interquartile range. NA: Not applicable.

Suppl.Table 2 Clinical and demographic data of MS followed up patients

Patient ID	Age	Sex	Time since relapse (days)	Treatment during follow-up	EDSS baseline	EDSS 12 months	MDSCs/MNCs baseline	MDSCs/MNCs 12 months
I	44	F	10	---	2	0	2.67	1.62
II	23	M	8	R	2	0	2.27	0.92
III	51	F	22	DF	4	1	0.52	0.87
IV	24	F	6	Cpx	3	0	2.00	3.47
V	30	M	5	Cc/DF	3	0	0.82	1.69
VI	50	F	21	Cc/DF	3.5	3	1.41	4.05
VII	32	F	33	Cc/Hf	4	0	2.32	3.14
VIII	42	F	10	Cc/Hf/Cpx	5	4	0.7	0.28
IX	40	F	32	Cc/DF	4	3	0.07	7.34
X	44	F	19	Cc/Cdb	4	0	0.72	0.89
XI	30	F	12	Cc/DF	4	1	0.36	0.88
XII	42	M	21	Cc	3	2	0.74	2.79
XIII	39	F	6	Hf	4	1	1.38	1.48
XIV	23	M	11	Cc/DF	4	0	0.15	1.11
XV	57	F	16	Cc	3	0	0.76	1.59
XVI	37	M	17	Df	3	0	1.41	7.71
XVII	29	M	13	Cc/DF/Hf	3	0	2.46	0.31
XVIII	37	M	14	Cc/DF	3	1	0.06	2.54
XIX	32	M	16	Cc/DF	3	0	1.37	5.26
XX	30	F	30	Cc/PG	3	1	1.11	1.44
XXI	36	F	12	Cc/DF	2	0	1.85	6.53
XXII	16	F	5	Ntz	3	2	0.30	1.09
XXIII	24	M	9	DF	2	0	3.39	0.95
XXIV	36	F	9	Ntz	4	1	3.44	6.16
XXV	39	F	8	If	5	1	1.7	1.27
XXVI	35	F	6	Atz	1	0	3.7	8.22
XXVII	43	F	7	---	2	1	3.82	2.30
XXVIII	35	F	14	Tf	5	1.5	0.14	4.73
XXIX	21	M	9	Tf	3	0	0.67	0.71
XXX	34	F	6	Cc/DF	3	3.5	1.02	0.97

Abbreviations: Atz: Alemtuzumab Cc: corticosteroids; Cdb: Cladribina; Cpx: Copaxone; DF: Dimethyl Fumarate; Hf: Hydroferol; If: Interferon; R: Rebif 44; Ntz: Natalizumab; PG: Plegridy; Tf: Teriflunomide.