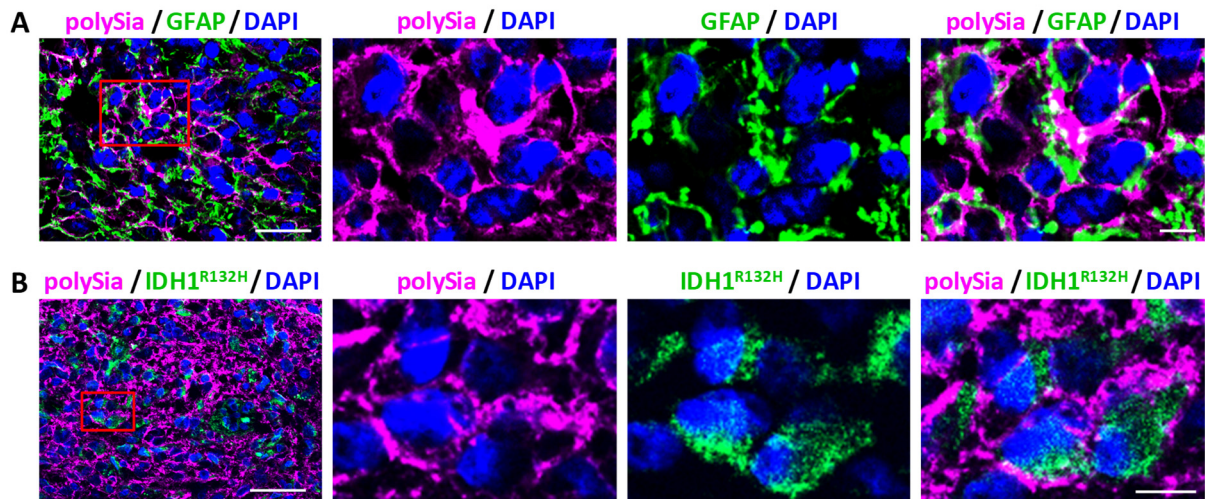


Thiesler et al. Supplementary Figure S1



Supplementary Figure S1. PolySia is associated with GFAP-positive cells in an IDH-wildtype GB (A) and with IDH1^{R132H}-positive cells in a GB specimen with the respective *IDH1* mutation (B). Immunofluorescence staining of polySia (magenta) and GFAP in A or IDH1^{R132H} in B, (green), as indicated. Nuclei were counterstained with DAPI (blue). Higher magnification views correspond to areas boxed in the overview images. Scale bars, 50 μm (overviews), 10 μm (higher magnification views).